

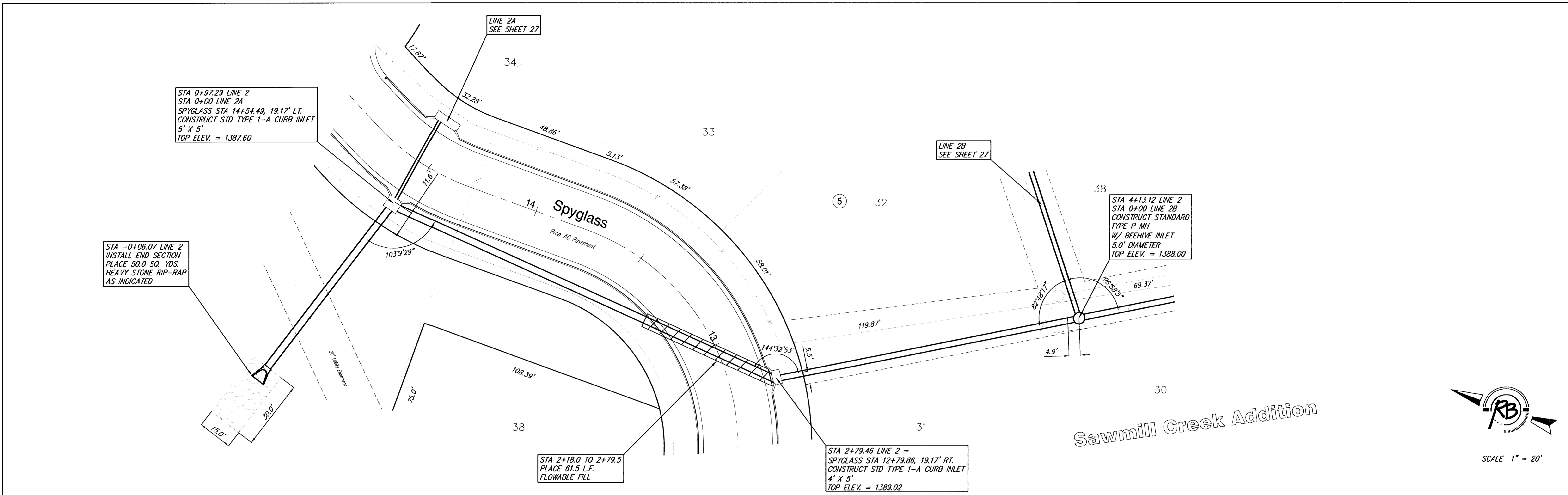
STA -0+06.07 LINE 2
INSTALL END SECTION
PLACE 50.0 SQ. YDS.
HEAVY STONE RIP-RAP
AS INDICATED

STA 0+97.29 LINE 2
STA 0+00 LINE 2A
SPYGLASS STA 14+54.49, 19.17' LT.
CONSTRUCT STD TYPE 1-A CURB INLET
5' X 5'
TOP ELEV. = 1387.60

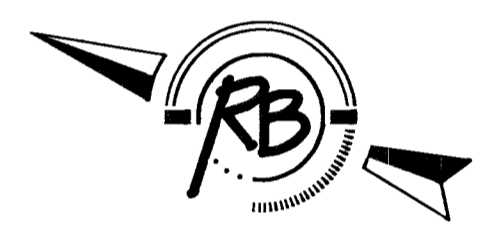
STA 2+18.0 TO 2+79.5
PLACE 61.5 L.F.
FLOWABLE FILL

STA 2+79.46 LINE 2 =
SPYGLASS STA 12+79.86, 19.17' RT.
CONSTRUCT STD TYPE 1-A CURB INLET
4' X 5'
TOP ELEV. = 1389.02

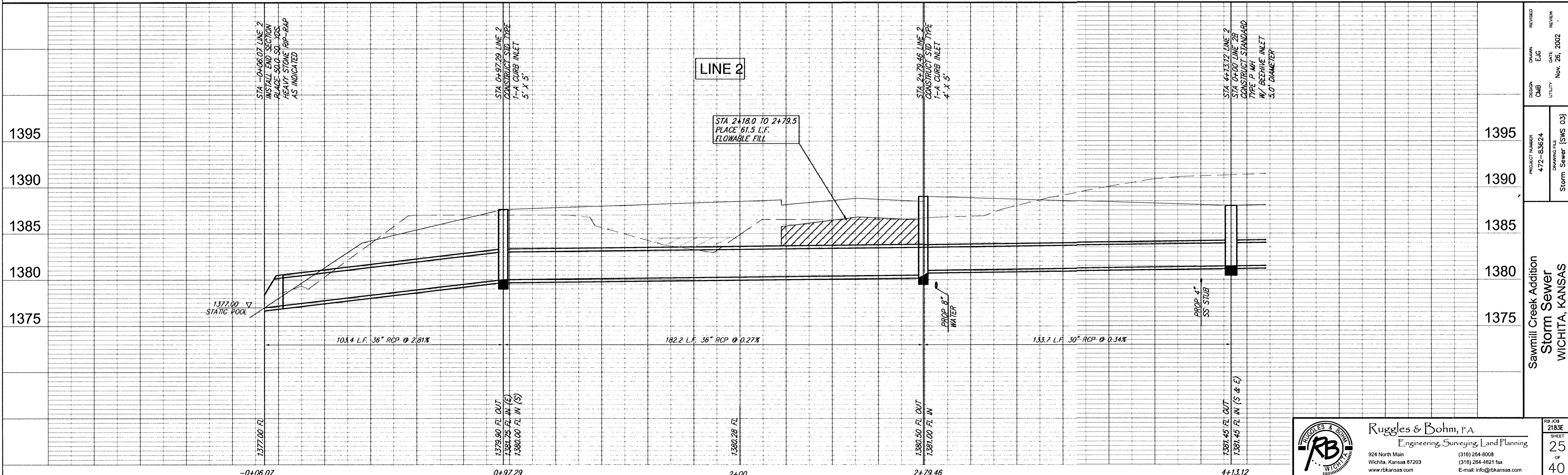
STA 4+13.12 LINE 2
STA 0+00 LINE 2B
CONSTRUCT STANDARD
TYPE P MH
W/ BEEHIVE INLET
5.0' DIAMETER
TOP ELEV. = 1388.00



Sawmill Creek Addition



SCALE 1" = 20'



REVISION	DATE	BY	CHKD
REVISED	Nov. 26, 2002	EJG	
DESIGN	UTILITY	CMB	
PROJECT NUMBER	472-63624	DRAWING FILE	SWS 03j
Sawmill Creek Addition Storm Sewer WICHITA, KANSAS			
RB JOB NUMBER	2183E	SHEET	25
		OF	40

Ruggles & Bohm, P.A.
Engineering, Surveying, Land Planning

924 North Main
Wichita, Kansas 67203
www.rbkansas.com

(316) 264-8008
(316) 264-4821 fax
E-mail: info@rbkansas.com