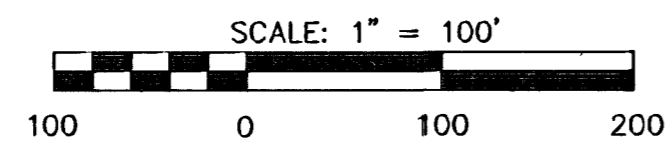


## GENERAL NOTES

- UNLESS SHOWN OR STATED OTHERWISE ON THESE DRAWINGS, MATERIALS AND CONSTRUCTION SHALL BE IN ACCORDANCE WITH CITY OF WICHITA CONCRETE PAVEMENT AND ASPHALTIC CONCRETE PAVEMENT SPECIFICATIONS.
- CONTRACTOR WILL BE REQUIRED TO PROVIDE A MINIMUM ADVANCE NOTICE OF SEVENTY-TWO (72) HOURS TO UTILITY COMPANIES PRIOR TO STARTING ANY EXCAVATION AS FOLLOWS:  
KANSAS ONE-CALL 1-800-344-7233  
OR 687-2470 (LOCAL WICHITA)
- THE CONTRACTOR MUST NOTIFY THE FOLLOWING IN CASE OF AN EMERGENCY:  
SBC (TELEPHONE) 800-870-8390  
COX COMMUNICATIONS (CABLE) 262-0661  
WESTAR (ELECTRIC) 383-8600  
KANSAS GAS SERVICE (GAS) 832-3101  
CITY OF WICHITA WATER & SEWER MAINT. 262-6000  
AQUILA (GAS) 946-0096
- THE CONTRACTOR SHALL BE RESPONSIBLE FOR PRESERVING PROPERTY IRONS. THE CONTRACTOR WILL BE REQUIRED TO RE-ESTABLISH ANY PROPERTY IRONS WHICH ARE DAMAGED OR DESTROYED BY HIS CONSTRUCTION OPERATIONS. SUCH IRONS SHALL BE RE-ESTABLISHED BY A LICENSED LAND SURVEYOR IN ACCORDANCE WITH STATE LAWS.
- EXISTING UTILITIES AND THEIR LOCATIONS, AS SHOWN ON THE PLANS REPRESENT THE BEST INFORMATION OBTAINABLE FOR DESIGN. LOCATION INFORMATION HAS BEEN OBTAINED FROM THE VARIOUS UTILITY COMPANIES AND IS EITHER FROM COMPANY RECORD DRAWINGS OR COMPANY PROVIDED FIELD LOCATIONS. THE PLAN LOCATIONS SHOWN ARE NOT GUARANTEED. ADDITIONAL EXISTING UTILITIES MAY ALSO BE ENCOUNTERED.
- RUBBLE FROM THE REMOVAL OF MISCELLANEOUS STRUCTURES AND EXCESS EXCAVATION WHICH IS TO BE WASTED SHALL BE DISPOSED OF ON SITES TO BE PROVIDED BY THE CONTRACTOR. THESE SITES SHALL BE APPROVED BY THE ENGINEER AS TO SUITABILITY, APPEARANCE AND SITE LOCATION. LOCATIONS THAT, IN THE OPINION OF THE ENGINEER, WILL LEAVE AN UNSIGHTLY APPEARANCE WILL NOT BE APPROVED. ALL DISPOSAL SITES MUST BE APPROVED BY THE KANSAS DEPARTMENT OF HEALTH AND ENVIRONMENT. MATERIAL EITHER STOCKPILED OR DISPOSED OF IN A FLOOD PLAIN WOULD REQUIRE A KANSAS STATE BOARD OF AGRICULTURE PERMIT. ANY MATERIAL DUMPED IN WATERS OF THE UNITED STATES OR WETLANDS IS SUBJECT TO U.S. CORPS OF ENGINEERS PERMITTING REGULATIONS. ANY MATERIAL BURIED OR STOCKPILED BEYOND APPROVED CONSTRUCTION LIMITS WOULD REQUIRE ADDITIONAL ARCHAEOLOGICAL INVESTIGATIONS UNLESS BURIED IN A PREVIOUSLY APPROVED BORROW LOCATION.
- CONTRACTOR SHALL BE RESPONSIBLE FOR THE REMOVAL OF EXISTING PAVEMENT, SIDEWALK, SLABS & FOOTINGS FROM AREA OF PROPOSED IMPROVEMENTS, AND LEGALLY DISPOSE OFF SITE (SEE NOTE 6).
- CONTRACTOR SHALL BE RESPONSIBLE FOR THE COORDINATION AND COST ASSOCIATED WITH RELOCATION AND REMOVAL OF ALL UTILITIES. ARRANGEMENTS SHALL BE MADE WITH UTILITY COMPANIES FOR RELOCATES, AND ALL FEES SHALL BE PAID BY THE CONTRACTOR.
- A SAW CUT OF AT LEAST ONE-HALF THE DEPTH OF THE EXISTING SURFACE COURSES OR ONE-FOURTH THE DEPTH OF THE EXISTING TOTAL PAVEMENT THICKNESS SHALL BE PROVIDED AT LOCATIONS WHERE PROPOSED CONSTRUCTION ABUTS AN EXISTING SURFACE OR PAVEMENT FOR WHICH PARTIAL REMOVAL OF THAT SURFACE OR PAVEMENT IS REQUIRED. SAW JOINT TO FACILITATE REMOVAL WITHIN THREE (3) FEET OF EXISTING JOINTS WILL NOT BE PERMITTED AND FOR SUCH INSTANCES THE LIMITS OF REMOVAL SHALL EXTEND TO THE EXISTING JOINT. SUCH SAW CUTS WILL NOT BE PAID FOR DIRECTLY AND THIS COST SHALL BE CONSIDERED AS SUBSIDIARY TO THE REMOVAL OF SURFACE OR PAVEMENT.
- ALL DIMENSIONS ARE TO FACE OF CURB.
- TOP OF CURB ELEVATIONS SHOWN ARE FOR FULL CURB. CONSTRUCT COMBINED CURB & GUTTER, FULL (6") UNLESS SHOWN OR STATED OTHERWISE.
- ALL TOPSOIL SHALL BE STRIPPED IN AREAS OF CUT/FILL AND STOCKPILED.
- A 6" LAYER OF TOPSOIL IS TO BE PLACED OVER ALL AREAS WHERE THE VIRGIN GRADE NO LONGER EXISTS. NOTE: THE FINISHED GRADE ON PLANS INDICATE THE SURFACE ELEVATION AFTER PLACEMENT OF 6" OF TOPSOIL.
- CONTRACTOR SHALL SEED ALL DISTURBED AREAS THAT FALL OUTSIDE OF LANDSCAPING PLANS WITH AN ANNUAL RYE GRASS/BERMUDA SEED MIX. (ANNUAL RYE GRASS @ 1#/1000SF, GUYMON BERMUDA @ 2#/1000SF). COST TO BE CONSIDERED SUBSIDIARY TO SITE RESTORATION.

## BENCHMARKS

- BM #1 "□" CUT E. END OF MEDIAN ISLAND 82'  
W. OF S ¼ COR. 3-T27S-R2E.  
ELEV.=184.365
- BM #2 CHISELED "□" ON TC ON EAST END OF  
MEDIAN ISLAND, 360' E. OF N ¼ COR.  
10-T27-R2E.  
ELEV.=189.42
- BM #3 STEPPED SPIKE IN NORTH SIDE OF  
PP ON SW, COR. 21ST & WAWONA  
779' EAST & 48' SOUTH OF N ¼ COR.  
10-T27S-R2E.  
ELEV.=197.32



BM #1

BM #2

BM #3

SW COR. SE ¼  
SEC. 3, T27S, R2E

THE COLLECTIVE  
ADDITION

WAWONA

TRINITY ACADEMY  
ADDITION



PAVING & INCIDENTAL STORM SEWER FOR

# MESSIAH BAPTIST CHURCH 4TH ADDITION

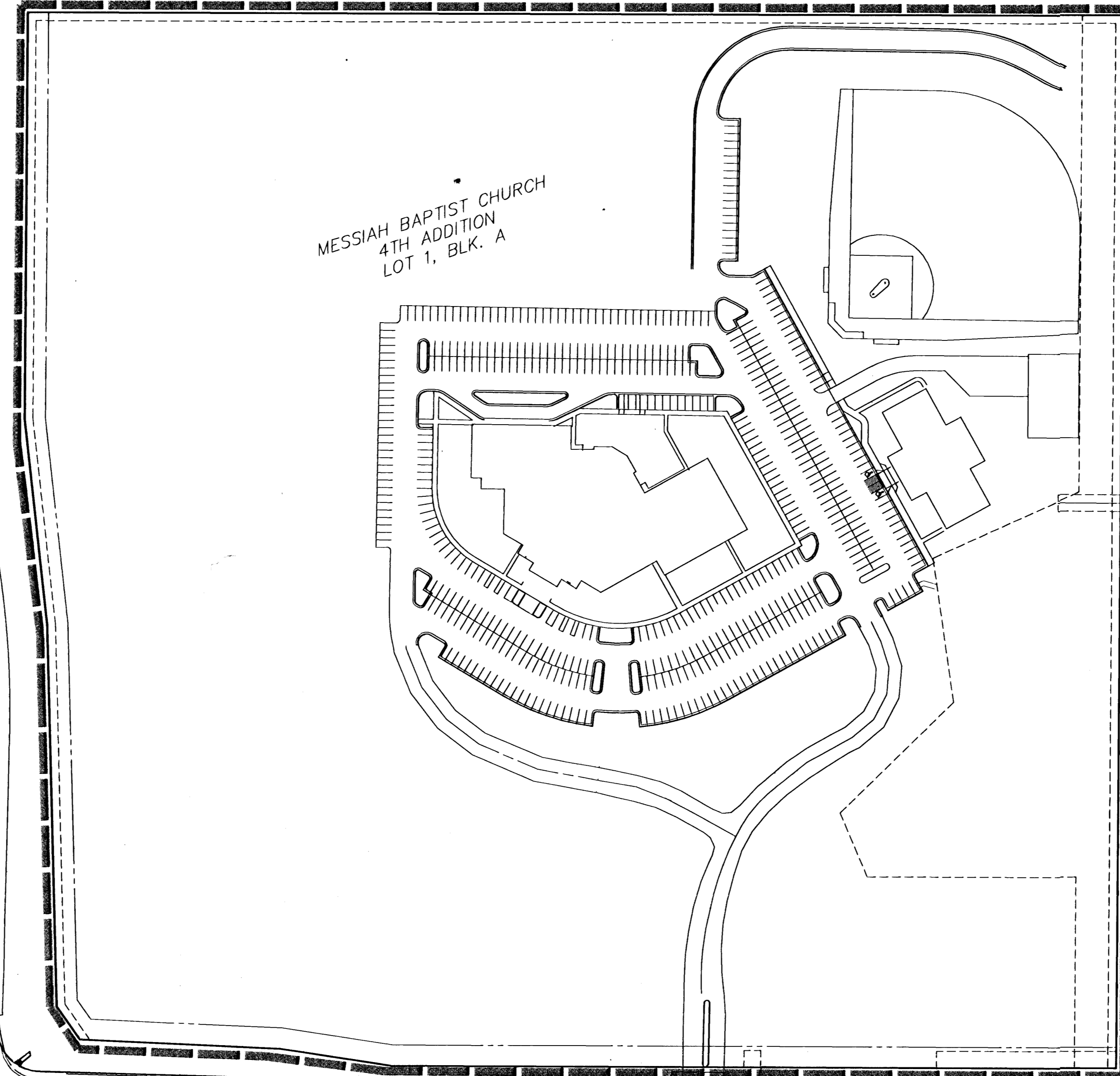
AN ADDITION TO THE CITY OF WICHITA  
SEDGWICK COUNTY, KANSAS

PROJECT NO. 472-83558 (448-89841)

NEIL D. CABLE, P.E. - CITY ENGINEER

OCA 765746

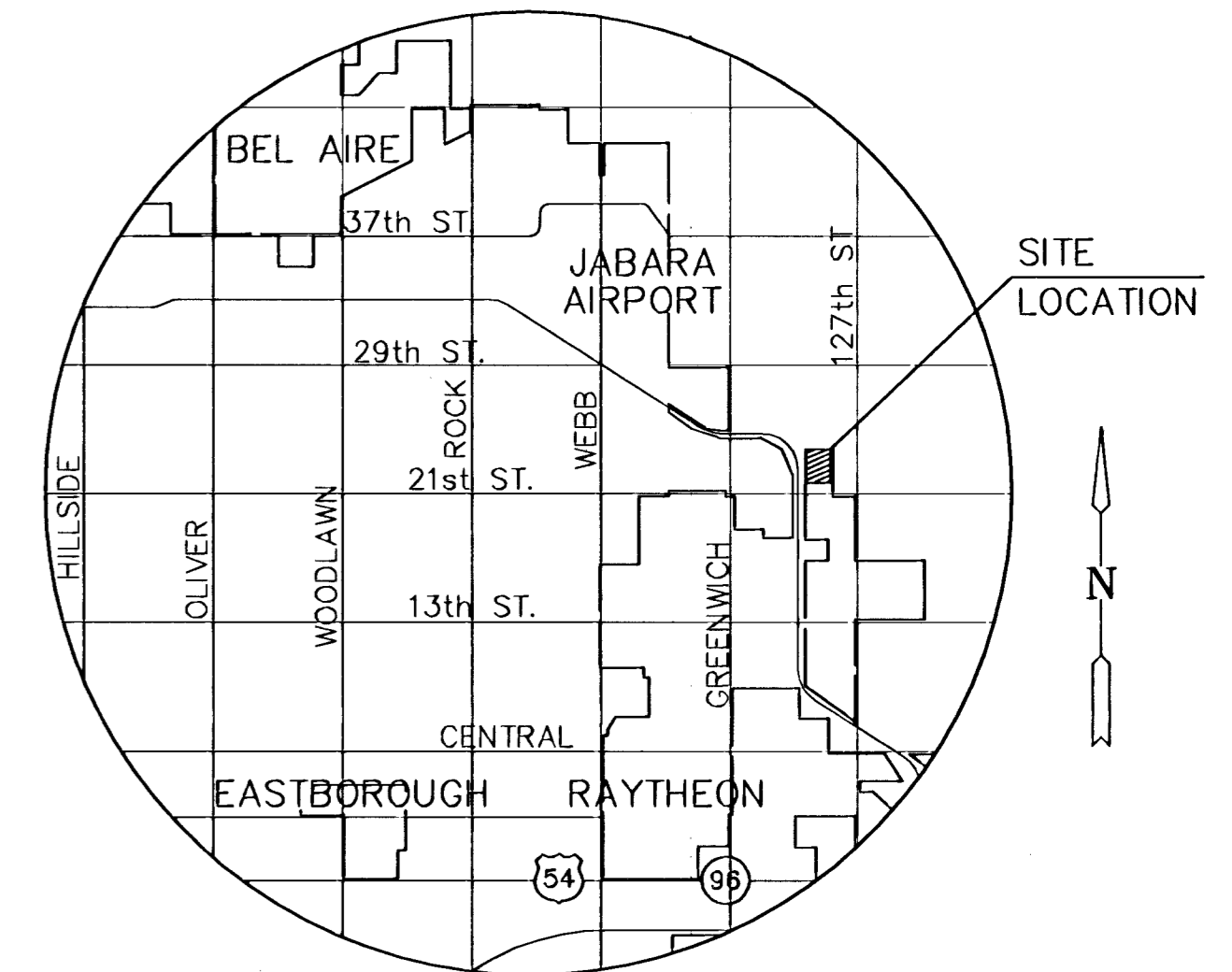
RIGHT TURN LANE & MAJOR ENTRANCE ON 21ST ST. NORTH  
FROM E. LINE OF K-96 TO E. LINE OF WAWONA ST.



MESSIAH BAPTIST CHURCH  
4TH ADDITION  
LOT 1, BLK. A

CHURCH OF THE  
MAGDALEN ADDITION  
LOT 1, BLK. A

BENEFIT DISTRICT



LOCATION MAP

## INDEX TO DRAWINGS

SHEET NO.	DESCRIPTION
1	TITLE SHEET
2-3	PAVING DETAILS
4-5	PAVEMENT PLANS
6	PAVING MARKING & SIGNING
7	SIGNING DETAILS
8	SIGNALIZATION PLAN
9-12	SIGNALIZATION DETAILS
13	STORM SEWER DETAILS
14-15	BMP DETAILS
16	FIRE HYDRANT RELOCATIONS
17-19	CROSS SECTIONS
20	PLAT

## LEGAL

LOT 1, BLOCK A; MESSIAH BAPTIST CHURCH  
4TH ADDITION, AN ADDITION TO WICHITA,  
SEDGWICK COUNTY, KANSAS.

## EARTHWORK

COMPACTED FILL	5.8 C.Y.
LOOSE FILL	563.7 C.Y.
EXCAVATION	591.9 C.Y.

K:\MEPS\MESSIAH-BAPTIST\CIVIL\02212\PAVE\02212\_ET

**MKEC**  
ENGINEERING CONSULTANTS  
411 N. WEBB ROAD  
WICHITA, KS. 67208  
318-684-9600

**CITY OF WICHITA**  
21ST STREET NORTH DECEL LANE  
PROJECT NAME

PAVING PLANS  
SHEET TITLE

JTC DESIGN BY:	DAC DRAWN BY:	JTC CHECKED BY:
MAY 2003 DATE	02212_ET DRAWING NAME	1 / 20 SHEET / OF