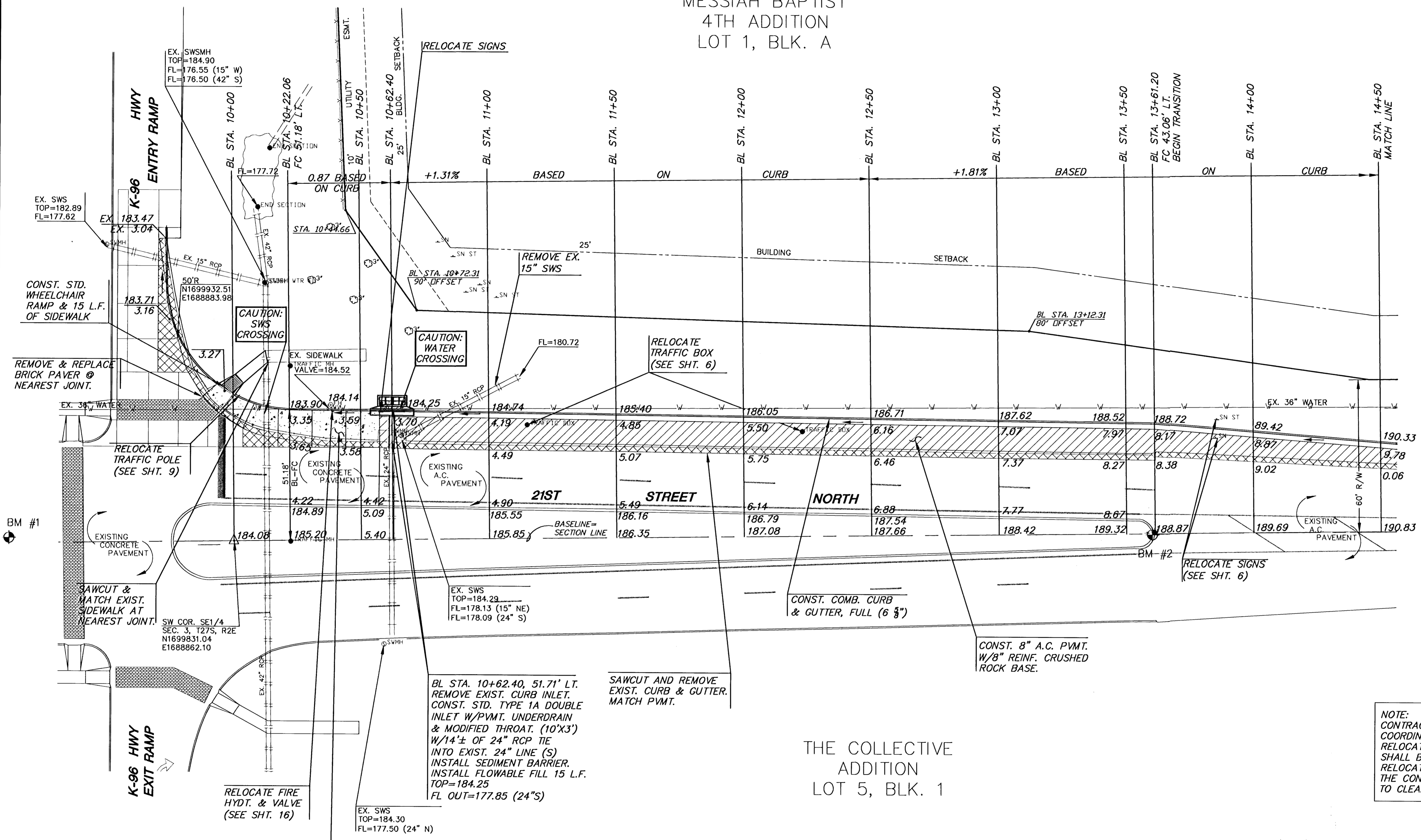
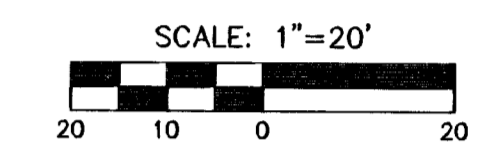


MESSIAH BAPTIST
4TH ADDITION
LOT 1, BLK. A



- LEGEND**
- EXIST. SAWCUT & REMOVAL
 - PROPOSED 8" REINF. CONC.
 - PROPOSED 8" A.C. PVMT.

NOTE:
CONTRACTOR SHALL BE RESPONSIBLE FOR THE COORDINATION AND ALL COSTS ASSOCIATED WITH RELOCATION OF ALL UTILITIES. ARRANGEMENTS SHALL BE MADE WITH UTILITY COMPANIES FOR RELOCATION, AND ALL FEES SHALL BE PAID BY THE CONTRACTOR. ALL COSTS ARE SUBSIDIARY TO CLEARING AND SITE PREPARATION.

THE COLLECTIVE
ADDITION
LOT 5, BLK. 1

NOTE:
CONTRACTOR SHALL VERIFY LOCATION & DEPTH OF EXISTING UTILITIES BEFORE CONSTRUCTION.

K:\MEPS\MESSIAH-BAPTIST\CIVIL\02212\PAVE\02212E1.DWG

 MKEC ENGINEERING CONSULTANTS 411 N. WEBB ROAD WICHITA, KS. 67204 316 - 684 - 9600	CITY OF WICHITA PROJECT NAME		
	21ST ST. NORTH DECEL LANE SHEET TITLE		
JTC DESIGN BY:	DAC DRAWN BY:	JTC CHECKED BY:	DATE
MAY 2003	02212 JOB NO.	4 / 20 SHEET/OF	