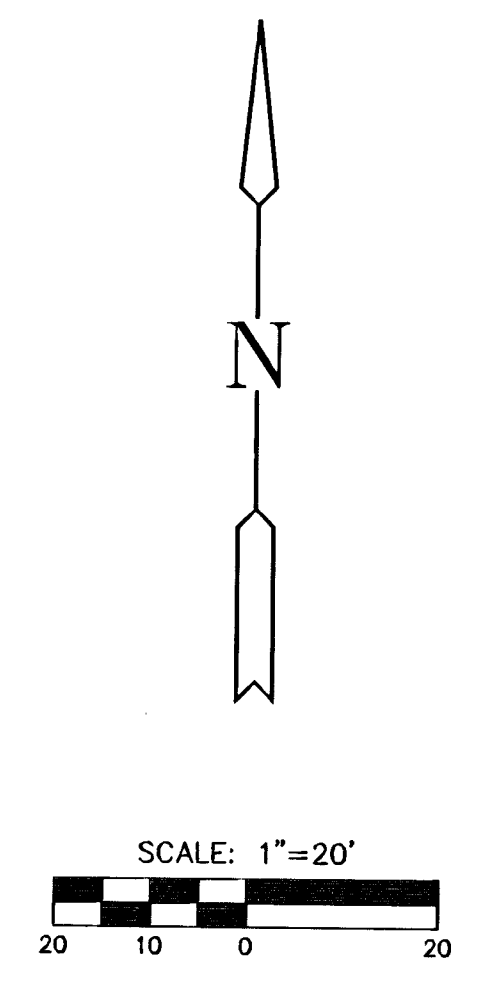
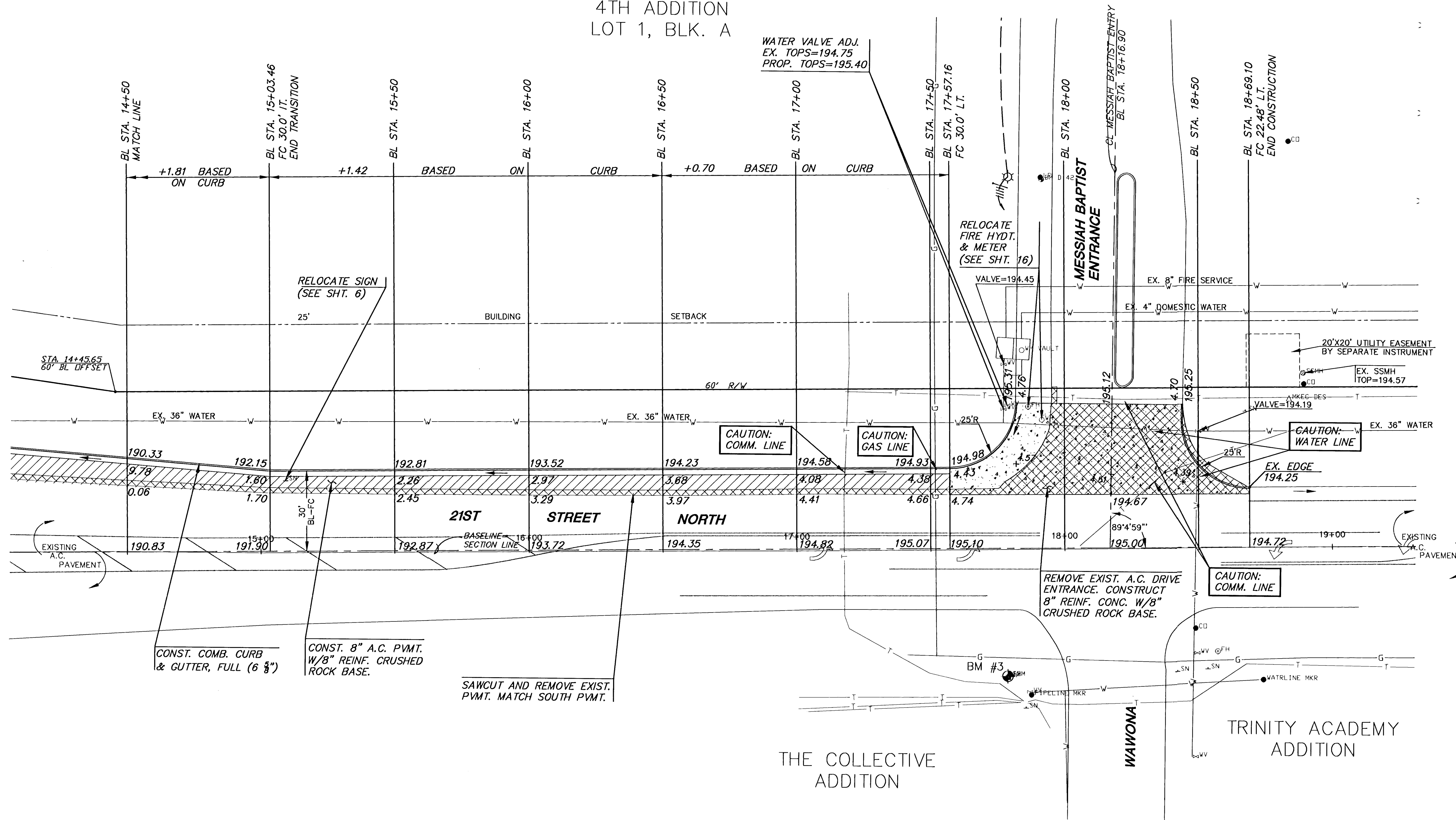


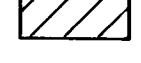


MESSIAH BAPTIST  
4TH ADDITION  
LOT 1, BLK. A



- LEGEND**
-  EXIST. SAWCUT & REMOVAL
  -  PROPOSED 8" REINF. CONC.
  -  PROPOSED 8" A.C. PVMT.

**NOTE:**  
CONTRACTOR SHALL BE RESPONSIBLE FOR THE COORDINATION AND ALL COSTS ASSOCIATED WITH RELOCATION OF ALL UTILITIES. ARRANGEMENTS SHALL BE MADE WITH UTILITY COMPANIES FOR RELOCATION, AND ALL FEES SHALL BE PAID BY THE CONTRACTOR. ALL COSTS ARE SUBSIDIARY TO CLEARING AND SITE PREPARATION.

K:\MEPS\MESSIAH-BAPTIST\CIVIL\02212\PAVE\02212E2.DWG



<b>CITY OF WICHITA</b>		
PROJECT NAME		
<b>21ST ST. NORTH DECEL LANE</b>		
SHEET TITLE		
JTC DESIGN BY:	DAC DRAWN BY:	JTC CHECKED BY:
MAY 2003 DATE	02212 JOB NO.	5 / 20 SHEET/OF