

44TH ST. SO. PAVING WITH  
INCIDENTAL SWS IMPROVEMENTS  
to serve

**GRAY'S 5TH ADDITION - PHASE 1**

44th St. S., from the west line of Hoover Road,  
east to the east line of Lot 12, Block C  
44th Ct. S. (Lots 8-21, Block A), from the north line of 44th St. S.,  
north to and including the cul-de-sac  
44th Ct. S. (Lots 22-35, Block A), from the north line of 44th St. S.,  
north to and including the cul-de-sac

CITY OF WICHITA, KANSAS

Neil D. Cable, P.E. City Engineer

Project Number

**472-83552**

O.C.A. Number:

**765758**

**Benchmarks**

Small RR Spike in W. Face of  
Power Pole 59' S. and 52.5' E.  
of NW Cor., SW 1/4, Sec. 14,  
TWP. 28-S, R-1-W.  
Elev. = 125.38 City Datum  
(1312.78 NGVD)

Small RR Spike in SW Face of  
12" Tree 15.5' E. of NE Cor.,  
Hope Community Baptist Church  
Addition.  
Elev. = 125.27 City Datum  
(1312.67 NGVD)

**Sheet Index**

Title Sheet	1
35' Pavement Detail	2
29' Pavement Detail	3
Sign Detail	4
Miscellaneous Details	5
44th St. S.	6-8
44th Ct. S. (Lots 8-21, Block A)	9
44th Ct. S. (Lots 22-35, Block A)	10
Line 1	11
Ditch Plan	12
Std. Type 1A Double Inlet Detail	13
Soil Erosion BMPs	14-15
Street X-Sections	16-22
Copy of Plat	23

**GENERAL NOTES:**

1. Contractor will be required to provide notice to utility companies a minimum of twenty-four (24) hours prior to any excavation, as follows:

Kansas One-Call 687-2470

The Contractor must notify the following in case of an emergency:

- Cox Communications 262-4270
- Kansas Gas Service 1-888-482-4950
- Westar Energy 383-8650
- Aquila Energy 1-888-482-4950
- Southwestern Bell 268-2245
- City of Wichita Water Dept. 268-4563
- City of Wichita Sewer Maint. 268-4024
- City of Wichita Storm Sewer Maint. 268-4090
- City of Wichita Traffic Maint. 268-4034
- Conoco Pipeline Co. 1-800-231-2551
- Williams Pipeline Co. 529-6600
- Phillips Pipeline Co. 1-800-766-8230

2. Utility service lines, poles, valve boxes, meters, and etcetera are to be adjusted as necessary by others prior to construction unless the plans specifically call for their adjustment by the Contractor or unless the plans specifically identify a utility to be adjusted by its owner during construction. Existing utilities and their location, as shown on the plans, represent the best information obtainable for design. The contractor will be required to work around existing utilities within the right-of-way which do not conflict with proposed construction.

3. Trees and shrubs in public right-of-way which are in direct conflict with proposed new construction shall be removed by the Contractor with the Engineer's approval. Trees and shrubs which are not in direct conflict with proposed new construction shall be saved and protected from damage.

4. All areas disturbed by construction shall be seeded at 300 lbs./acre with Rye Grass immediately following construction in that area. Contractor shall prepare ground per City specifications.

5. Rubble from the removal of miscellaneous structures and excess excavation which is to be wasted shall be disposed of on sites to be provided by the Contractor. These sites shall be approved by the Engineer as to suitability, appearance and site location. Locations that, in the opinion of the Engineer, will leave an unsightly appearance will not be approved. All disposal sites must be approved by the Kansas Department of Health and Environment. Material either stockpiled or disposed of in a flood plain would require a Kansas State Board of Agriculture permit. Any material dumped in waters of the United States or wetlands is subject to U.S. Corps. of Engineers permitting regulations. Any material buried or stockpiled beyond approved construction limits would require additional archaeological investigations unless buried in a previously approved borrow location.

6. The Contractor shall be responsible for preserving property irons. The Contractor will be required to re-establish any property irons which are damaged or destroyed by his construction operations. Such irons shall be re-established by a licensed land surveyor in accordance with state law.

7. A saw cut of at least one-half the depth of existing surface courses of one-fourth the depth of the existing total pavement thickness shall be provided at locations where proposed construction abuts as existing surface course or pavement for which partial removal of that surface or pavement is required. Sawed joint to facilitate removal within three (3) feet of existing joints will not be permitted and for such instances the limits of removal shall extend to the existing joint. Such saw cuts will not be paid for directly and this cost shall be considered as subsidiary to the removal of the surface or pavement.

8. All areas disturbed during construction shall be seeded, mulched, and fertilized as follows (Permanent Seeding):

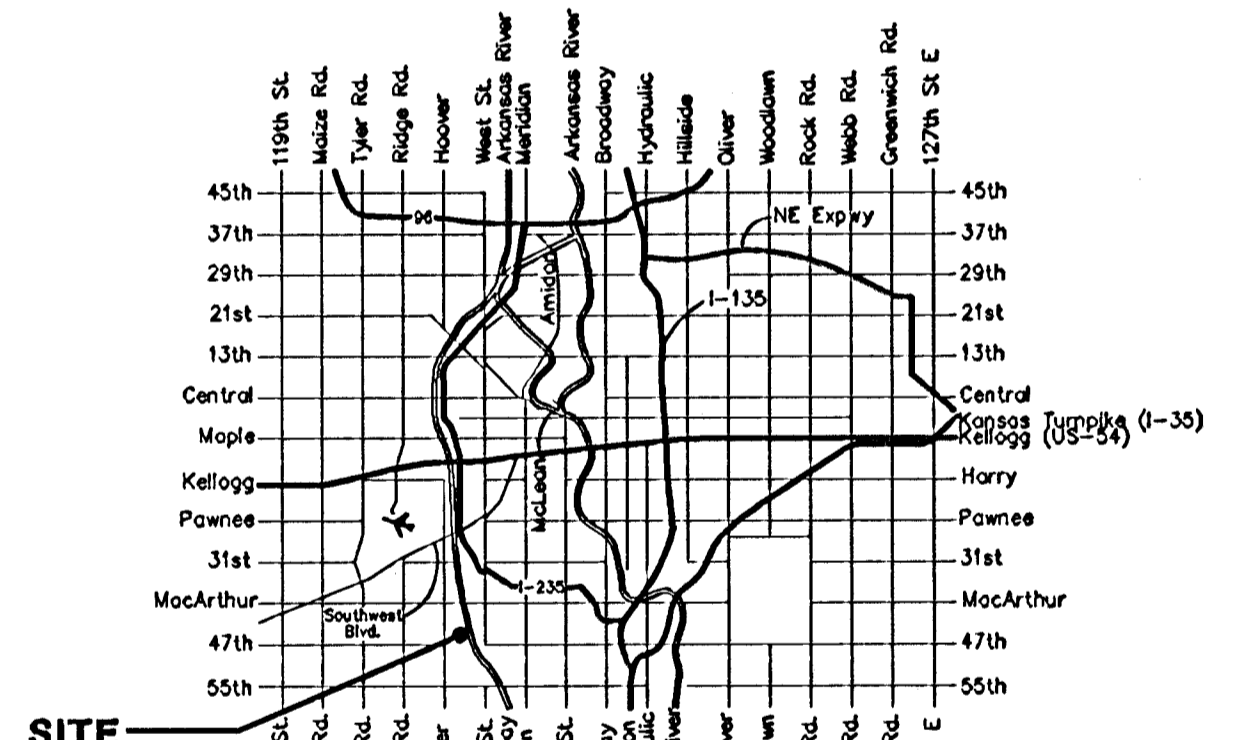
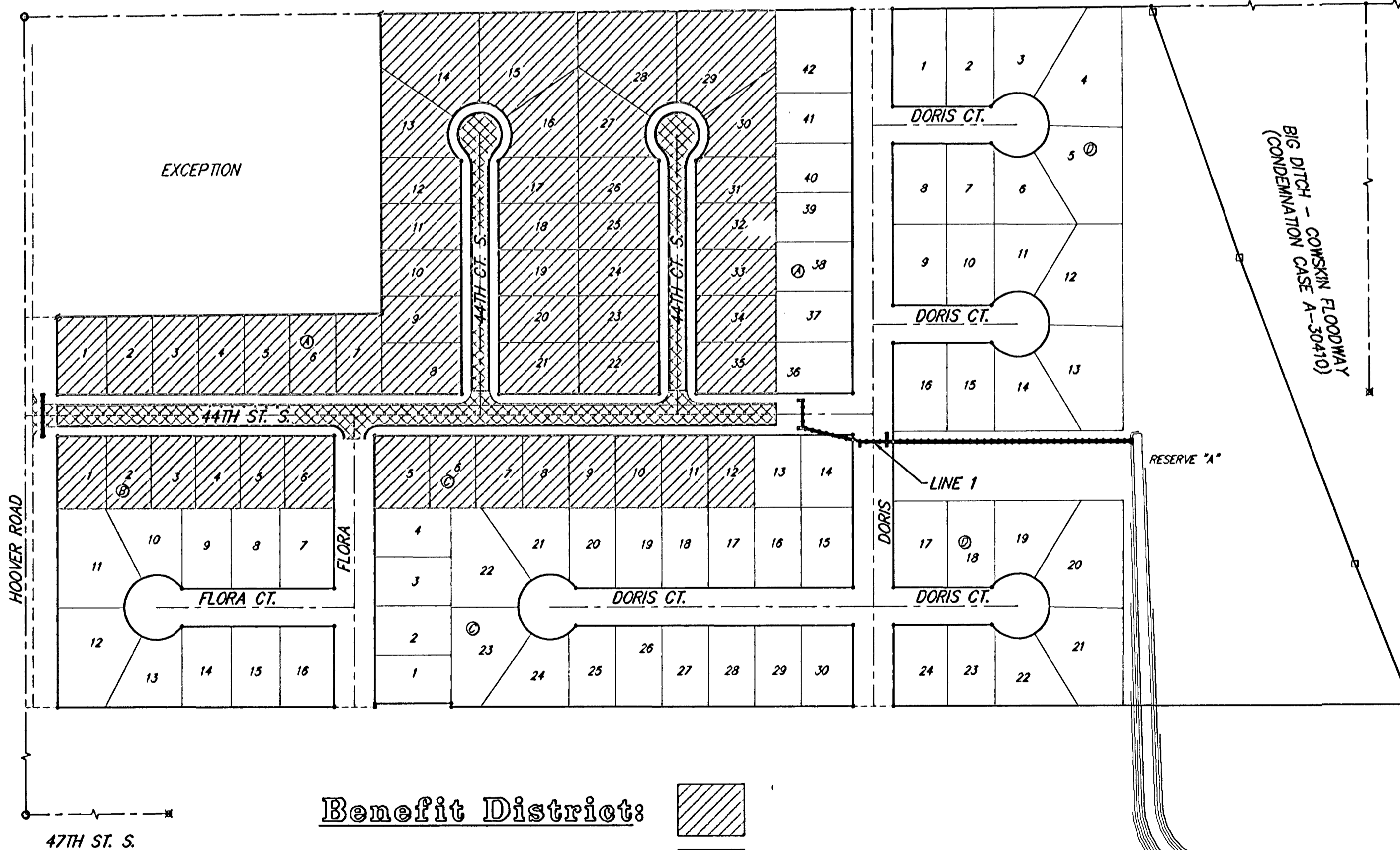
- Seed: Rye Grass: 5 lbs./1000 Sq. Ft.
- Kansas Premium Fescue Blend: 3 lbs./1000 sq. ft.
- Mulch: Prairie Hay: 2 tons/acre
- Fertilizer: 12-24-12: 850 lbs./acre

All costs associated with seeding, mulching, and fertilizing shall be included in bid item "Project Seeding." All seeding operations shall conform to City of Wichita Standard Specifications.

9. All excess excavation shall remain on-site and shall be stockpiled at a location to be determined by the engineer.

10. Contractor may be allowed to substitute back of curb erosion protection with City of Wichita approved equal.

Scale: 1" = 150'  
BOOKED  
9-24-03  
MCG  
C-751



**Vicinity Map**

**Project Earthwork Totals**

	R/W	Ditch	Totals
Excavation:	8,783	3,108	11,891 C.Y.
Loose Fill:	305	0	305 C.Y.
Compacted Fill:	213	0	213 C.Y.

**Total Project Length**  
2,060 L.F. = 0.39 Miles

**Benefit District:** [Hatched Box]

**Proposed Streets:** [Cross-hatched Box]

