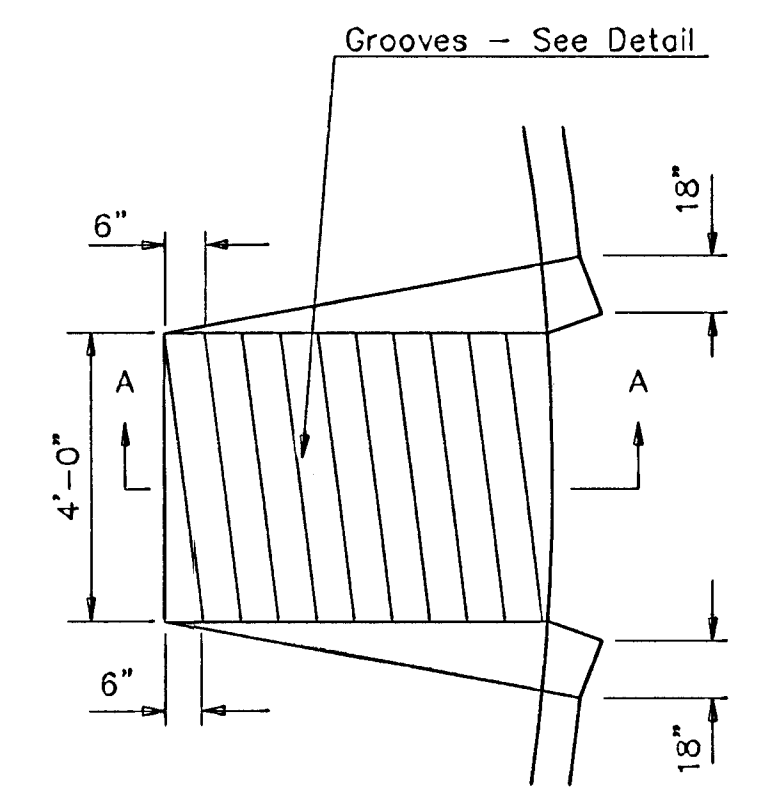
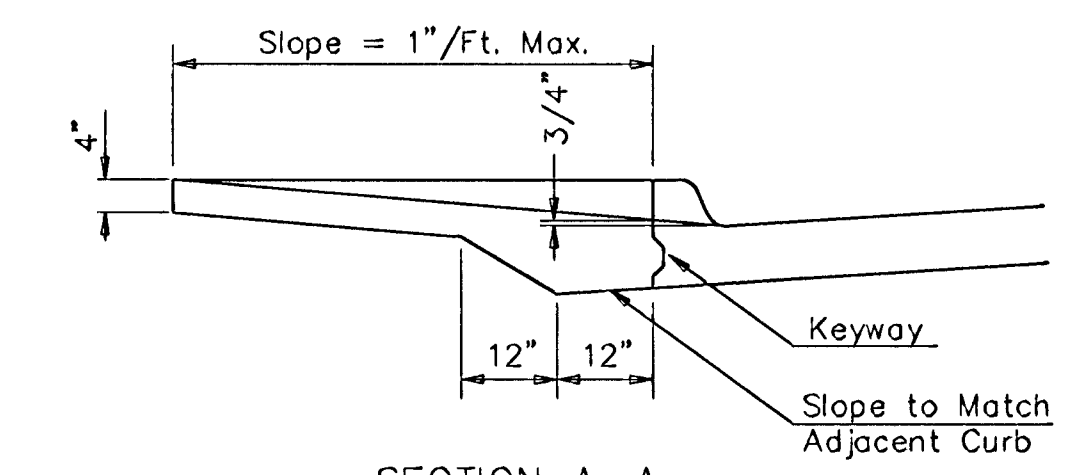


EXPANSION JOINT

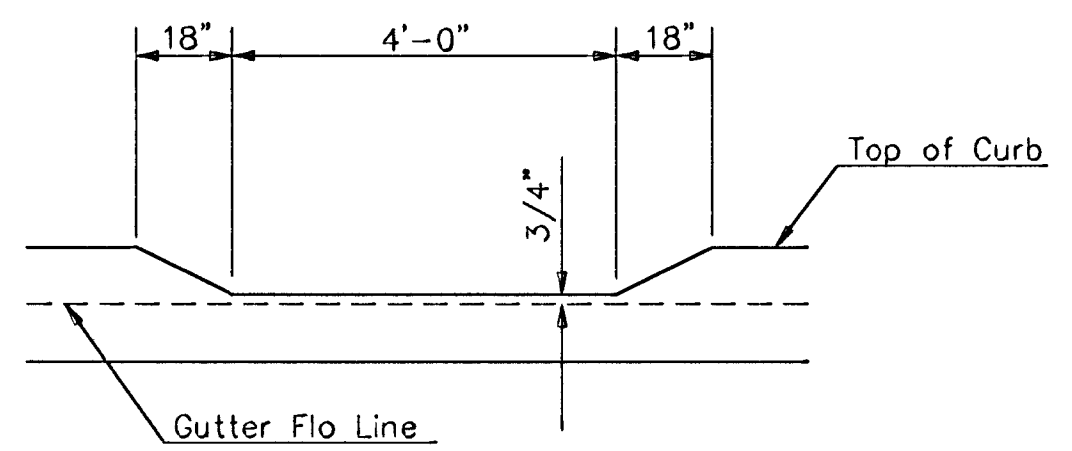
NOTE: Extra Thickness to be Subsidiary to Price of Square Yards Pavement



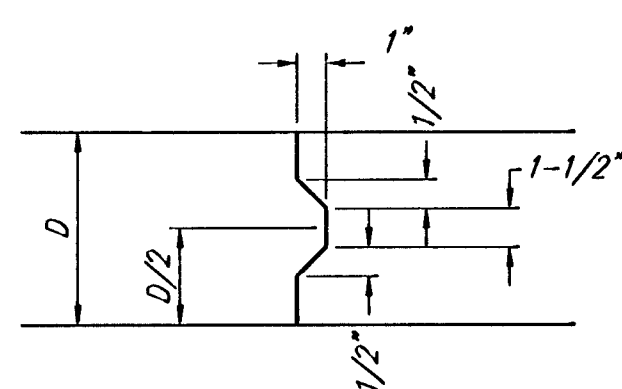
WHEELCHAIR RAMP PLAN VIEW



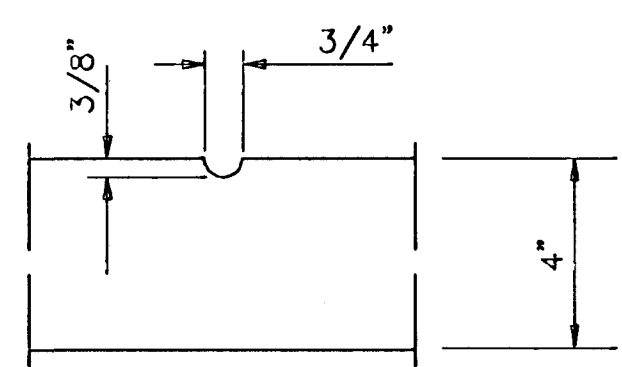
SECTION A-A



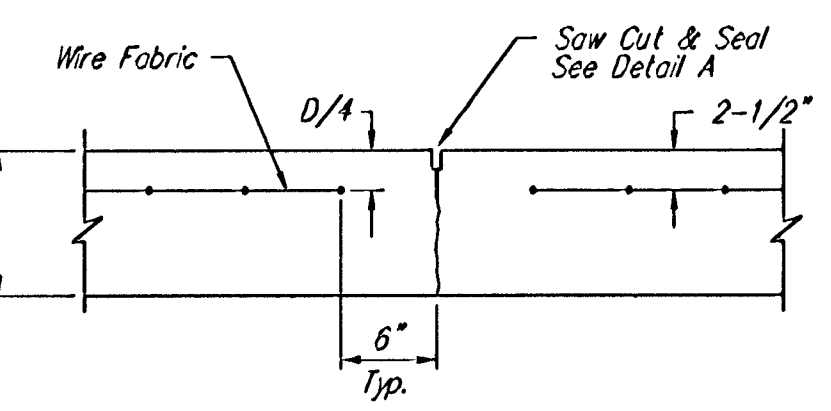
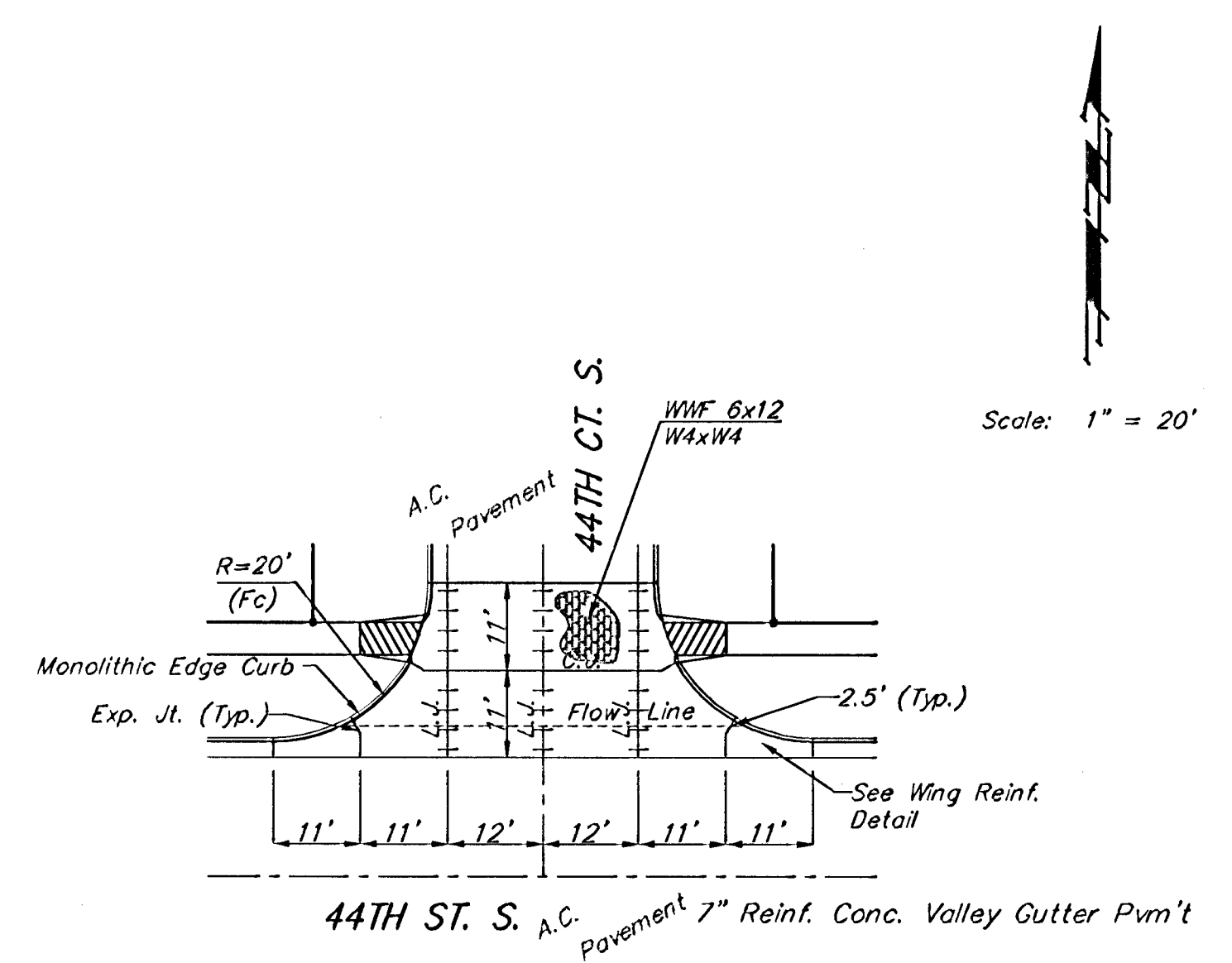
DEPRESSED CURB DETAIL



KEYWAY DETAIL

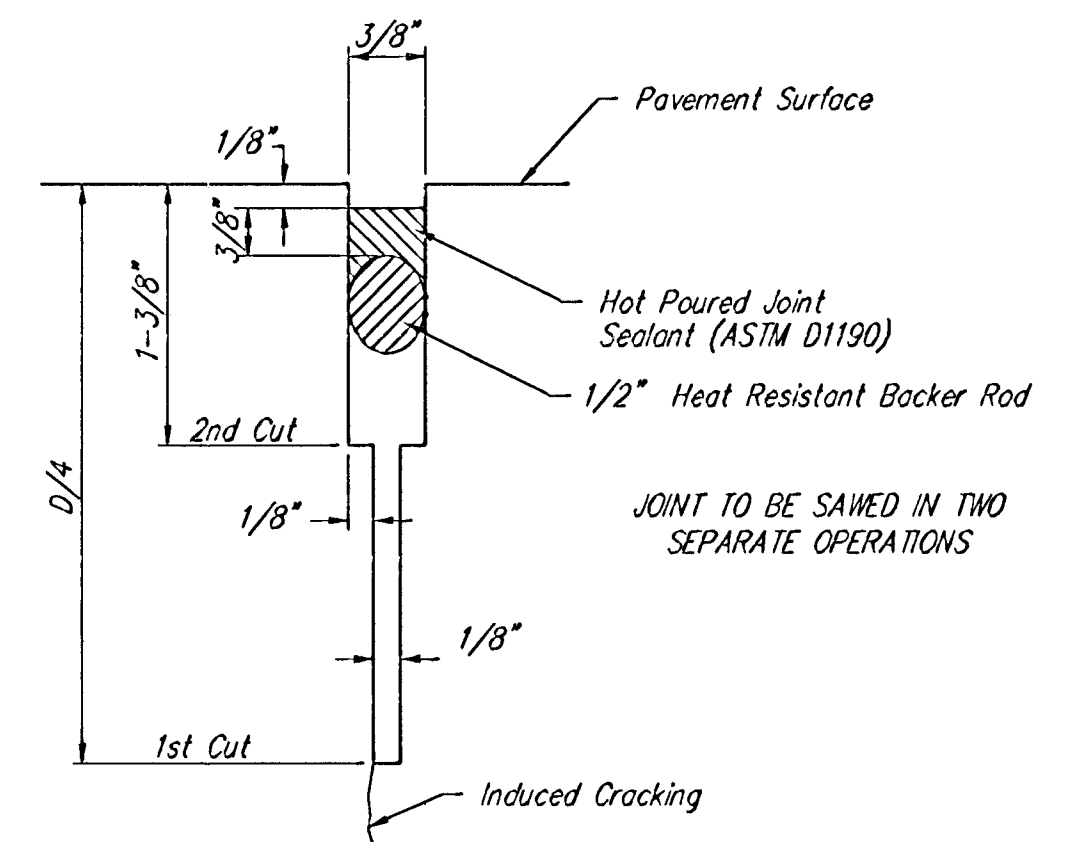


GROOVE DETAIL

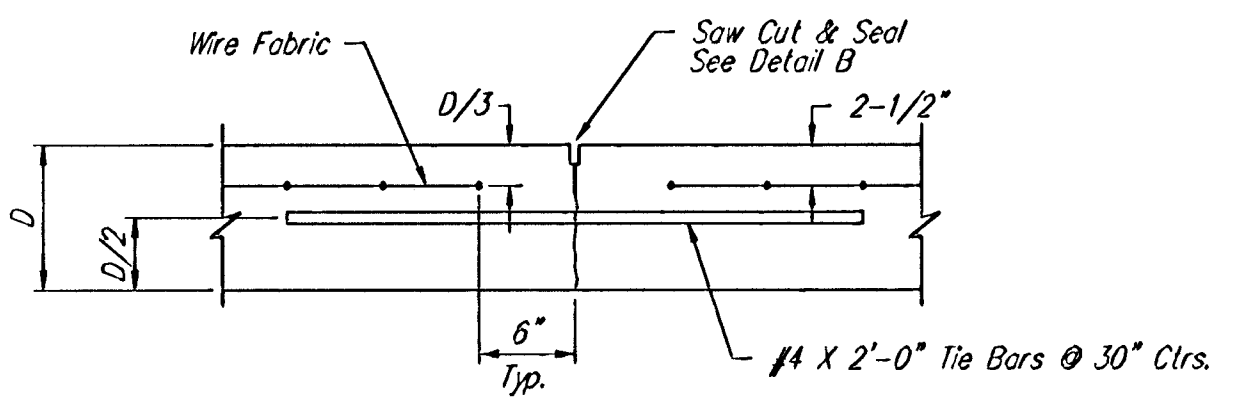
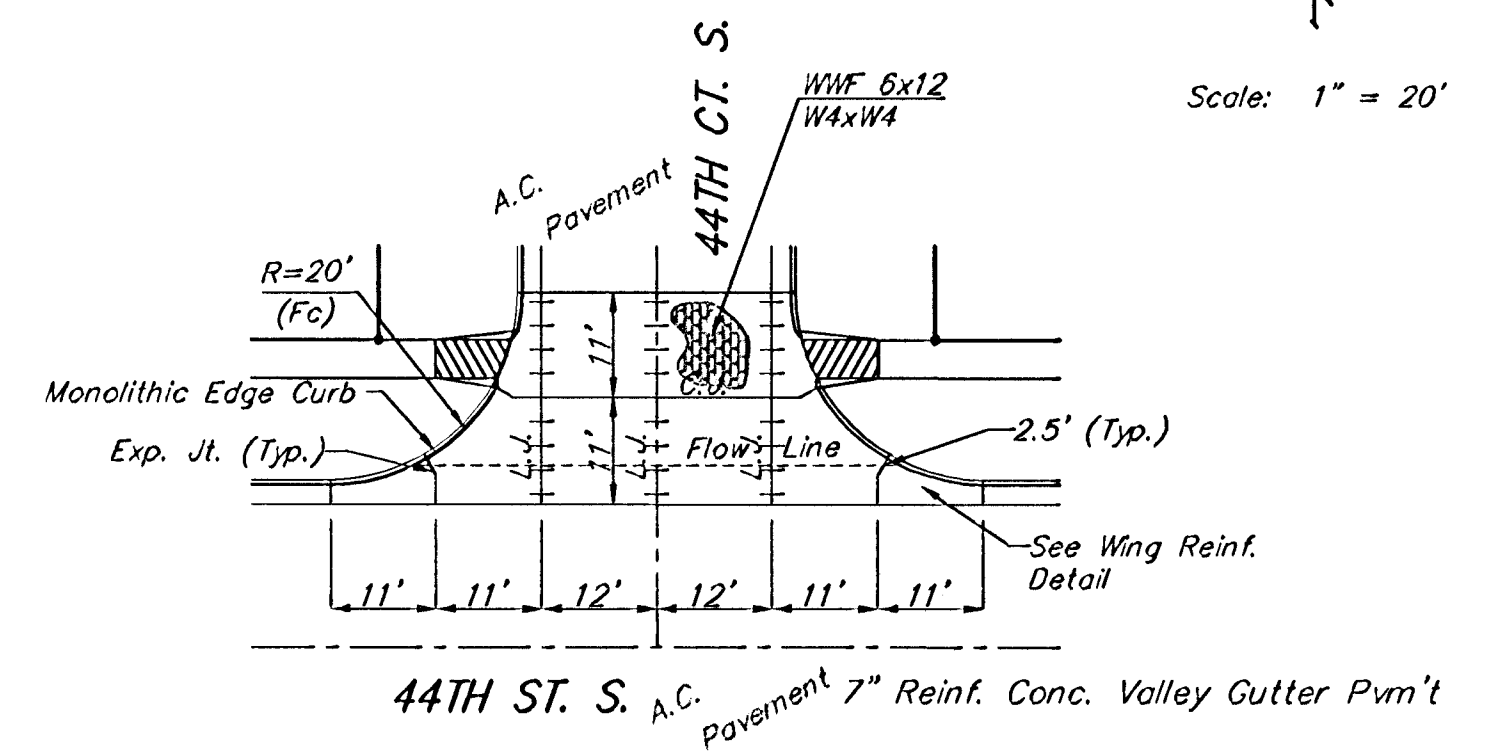


CONTRACTION JOINT DETAIL (C.J.)

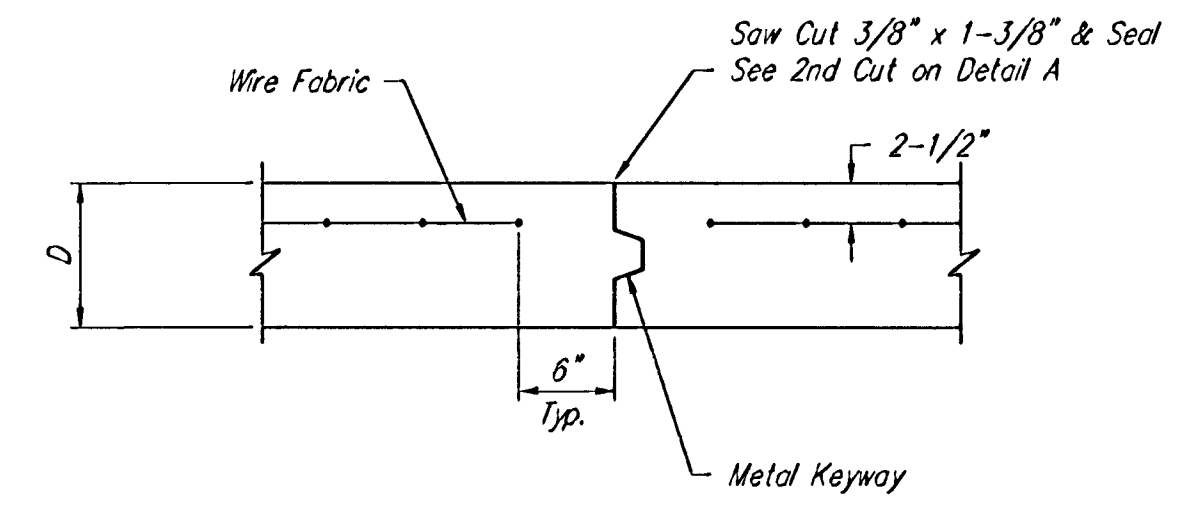
WHEELCHAIR RAMP DETAIL



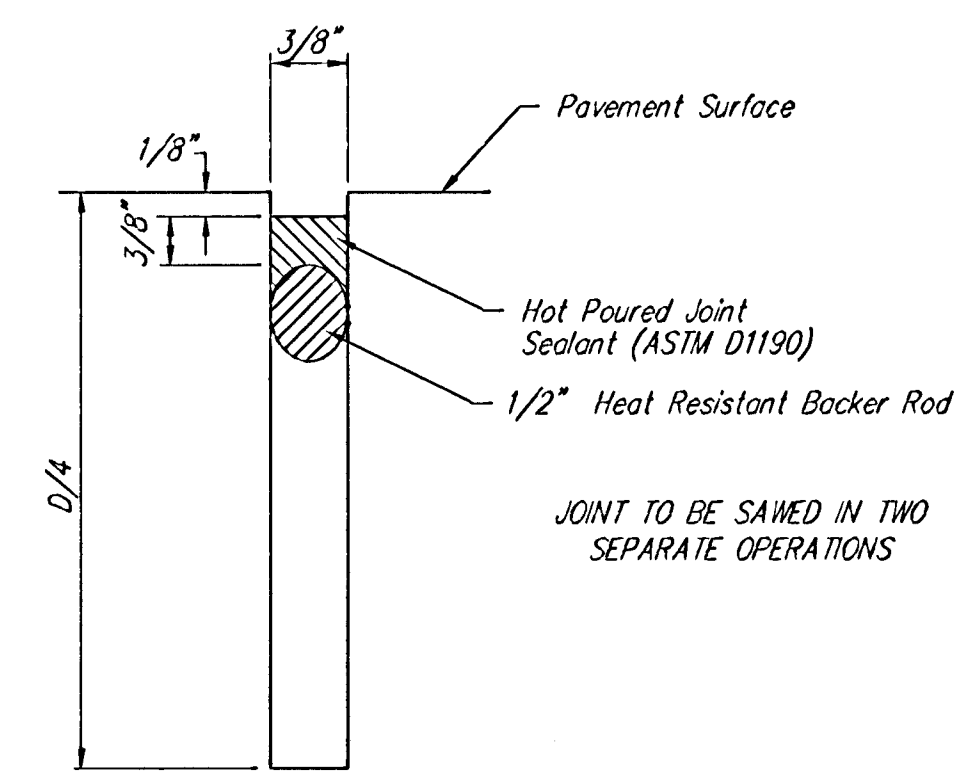
SAW JOINT DETAIL "A"



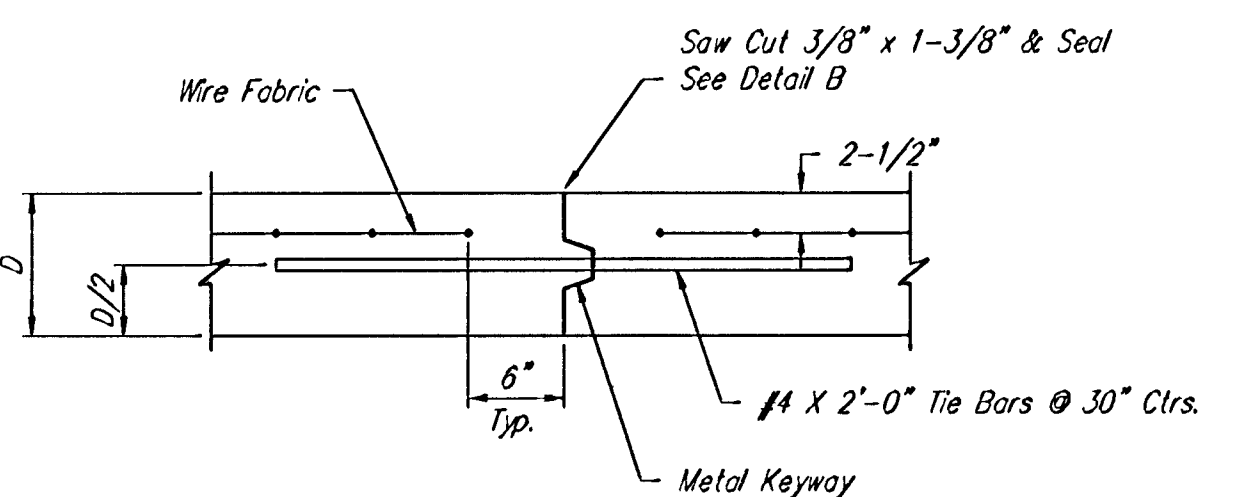
LONGITUDINAL JOINT DETAIL (L.J.)



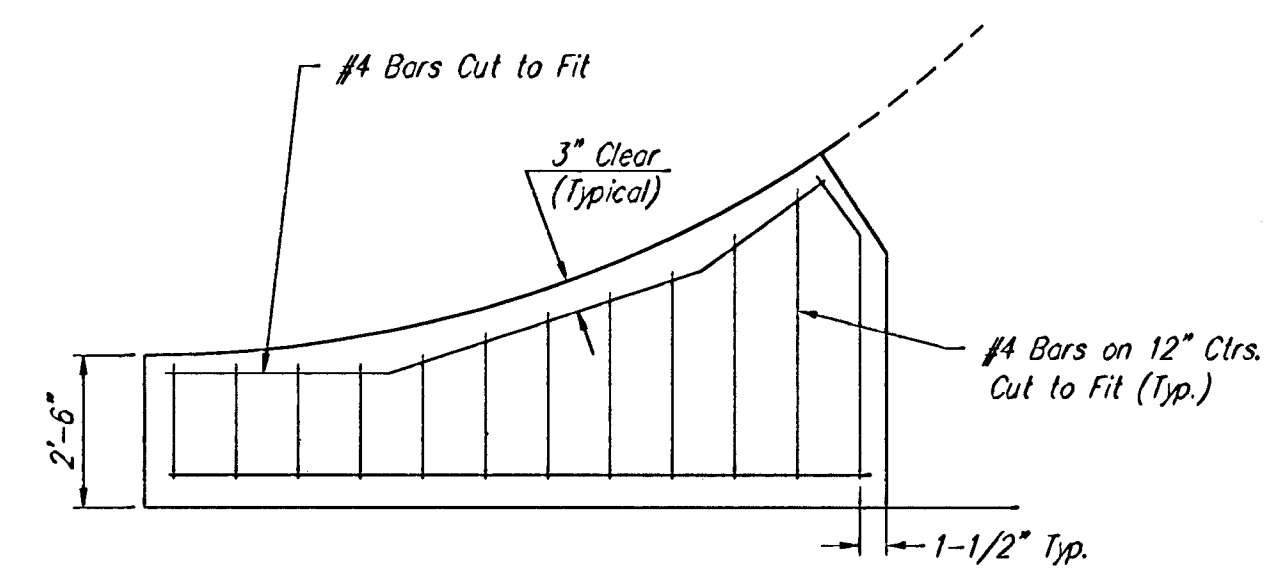
OPTIONAL CONTRACTION JOINT (CONSTRUCTION JOINT)



SAW JOINT DETAIL "B"



OPTIONAL LONGITUDINAL JOINT DETAIL (L.J.) (CONSTRUCTION JOINT)



WING REINFORCING DETAIL

NOTE: 6" X 12" WAXWA Wire Fabric Reinforcing Shall Be Placed So That The Wires With The 6" Spacing Will Run Parallel With The Longitudinal Joints.

VALLEY GUTTER DETAILS

BAUGHMAN COMPANY P.A.
ENGINEERING, SURVEYING, & PLANNING
315-262-7271 • 315 ELLIS • WICHITA, KANSAS 67211

PROJECT NUMBER
472-03552

DESIGN STAFF	DRAWN STAFF	APPROVED	DATE 06-02	SCALE NGNE	SHEET 5 OF 23
--------------	-------------	----------	------------	------------	---------------

07-12-E108
1/02/DETAIL