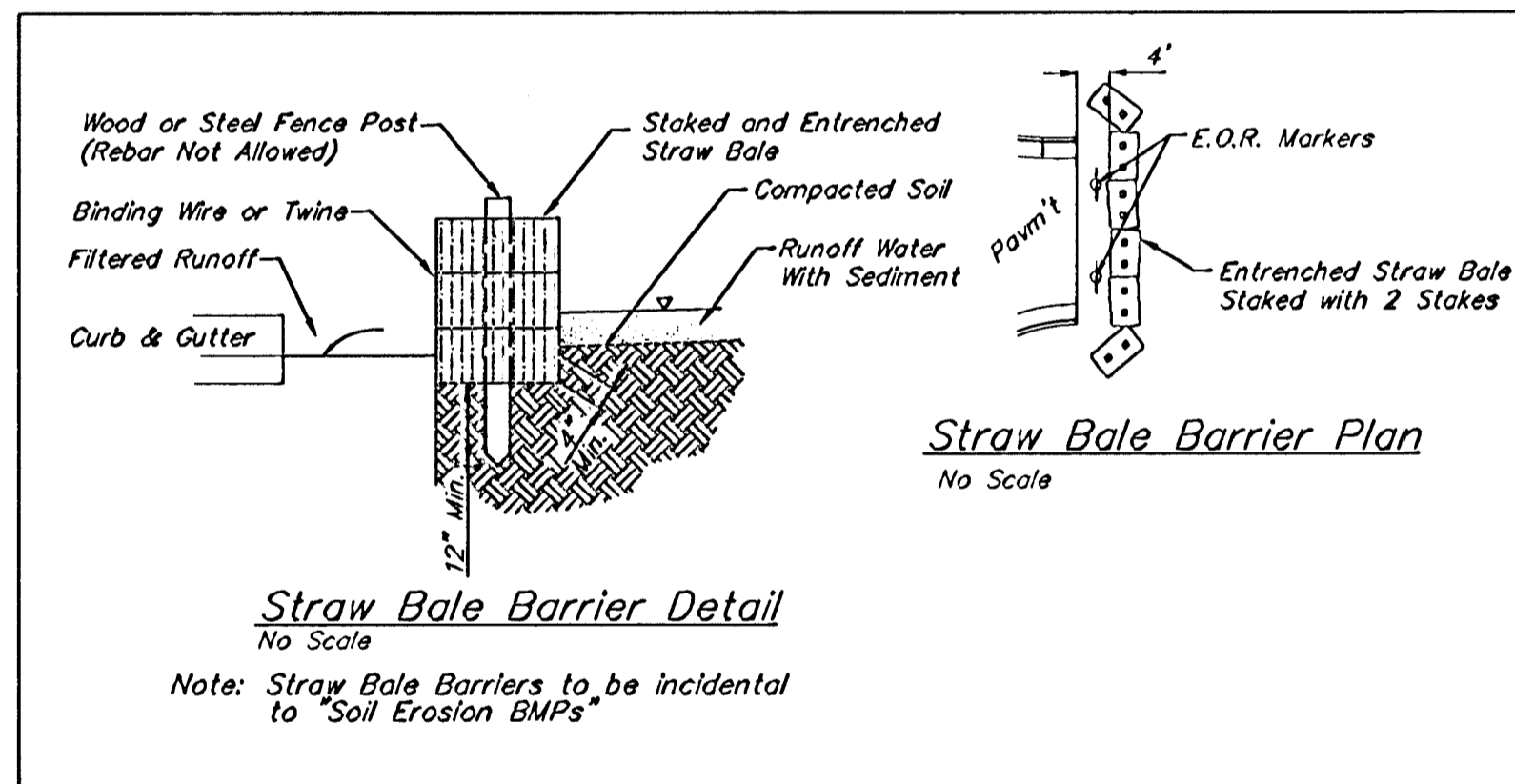
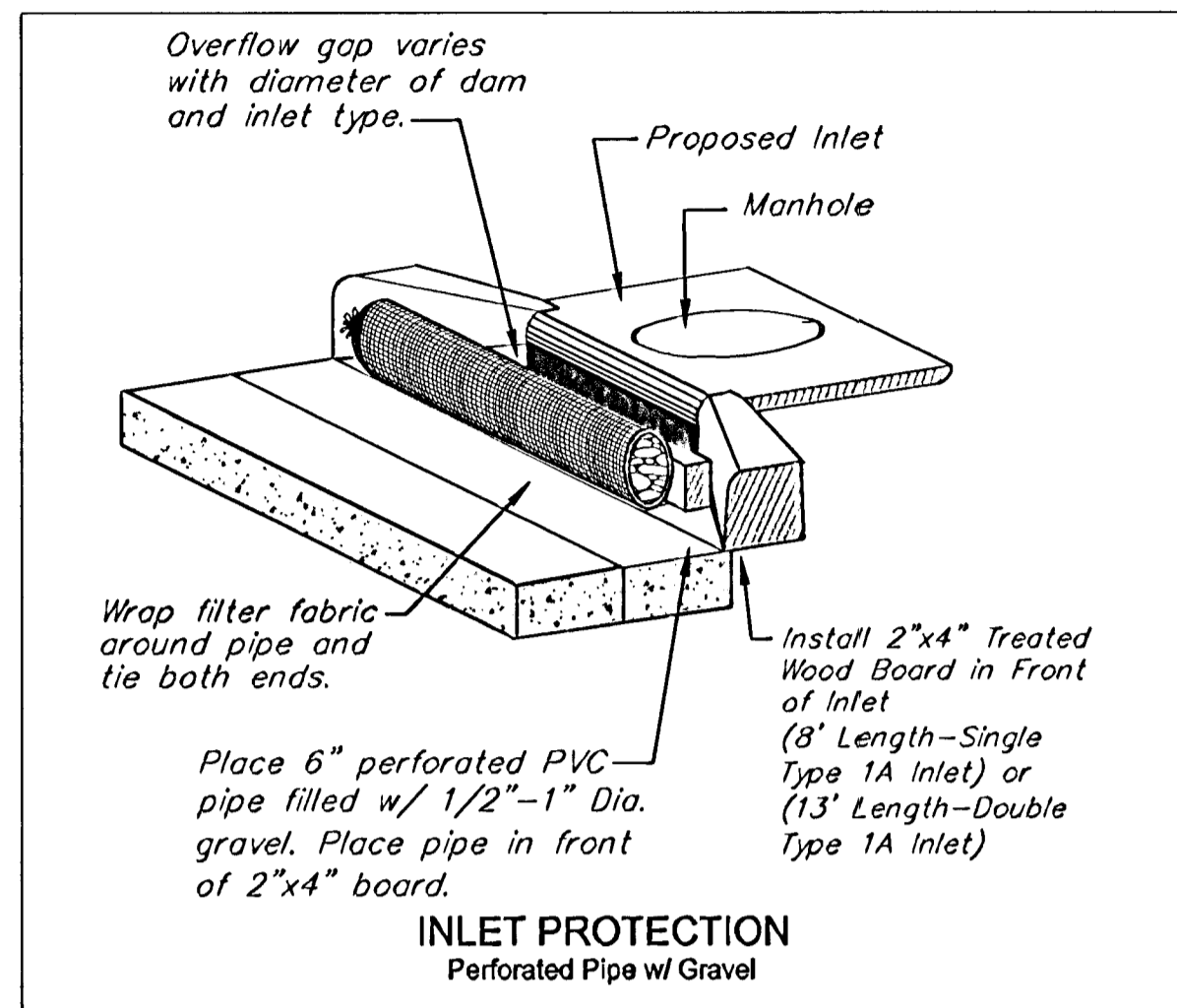
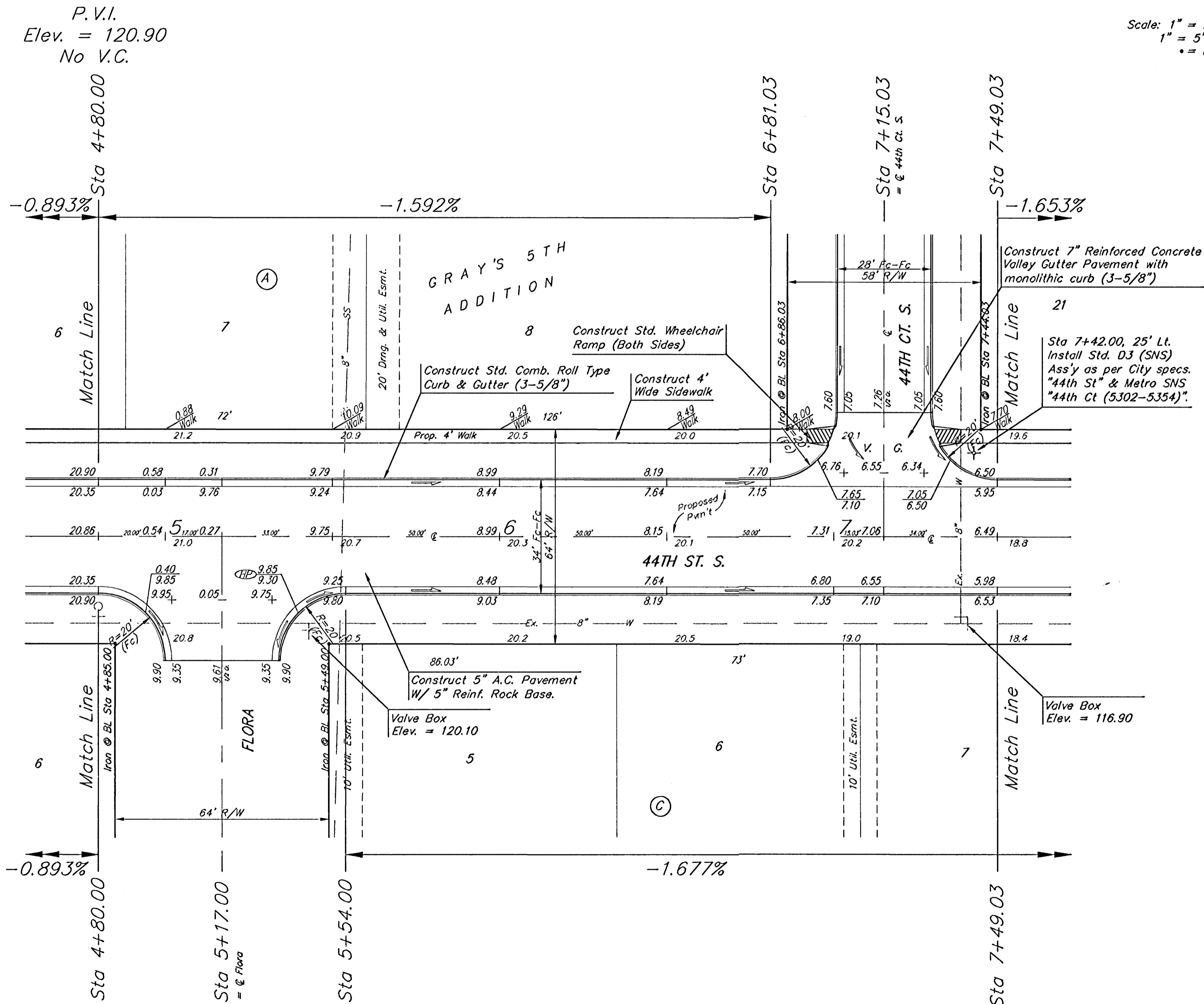


**BENCHMARK:**  
 Small RR Spike in W. Face of  
 Power Pole 59' S. and 52.5' E.  
 of NW Cor., SW 1/4, Sec. 14,  
 TWP. 28-S, R-1-W.  
 Elev. = 125.38 City Datum  
 (1312.78 NGVD)

Small RR Spike in SW Face of  
 12" Tree 15.5' E. of NE Cor.,  
 Hope Community Baptist Church  
 Addition.  
 Elev. = 125.27 City Datum  
 (1312.67 NGVD)



Subdivision Bench Marks		
Street & Station	Location Description	Elevation
44th St. S. 0+55.00, 17.25' Rt.	Adjacent to Fire Hydrant at W. End of pavement of 44th St. S. & Hoover Road	
44th St. S. 4+80.00, 17.25' Rt.	Adjacent to Fire Hydrant at N. End of W. Curb Return of 44th St. S. and Flora	
44th Ct. S. 2+56.00, 14.25' Rt.	Adjacent to Fire Hydrant between Lots 18-19, Block A on 44th Ct. S. (Lots 8-21, Block A)	
44th Ct. S. 2+56.00, 14.25' Rt.	Adjacent to Fire Hydrant between Lots 32-33, Block A on 44th Ct. S. (Lots 22-35, Block A)	



NOTE: ROLL TYPE CURB & GUTTER TO BE CONSTRUCTED ON THE PAVEMENT SHOWN ON THIS SHEET. TOP OF CURB ELEVATIONS ARE GIVEN FOR FULL HEIGHT CURB.

**GRAY'S 5TH ADDITION - PHASE 1**  
**44TH STREET SOUTH**  
 STA 4+80.00 TO STA 7+49.03

**BAUGHMAN COMPANY P.A.**  
 ENGINEERING, SURVEYING, & PLANNING  
 316-262-7271 • 315 ELLIS • WICHITA, KANSAS 67211

PROJECT NUMBER  
**472-83662**

DESIGN: NGBW    DRAWN: TMS    APPROVED:    DATE: 06/02    SCALE: Noted    SHEET: **7** OF **23**