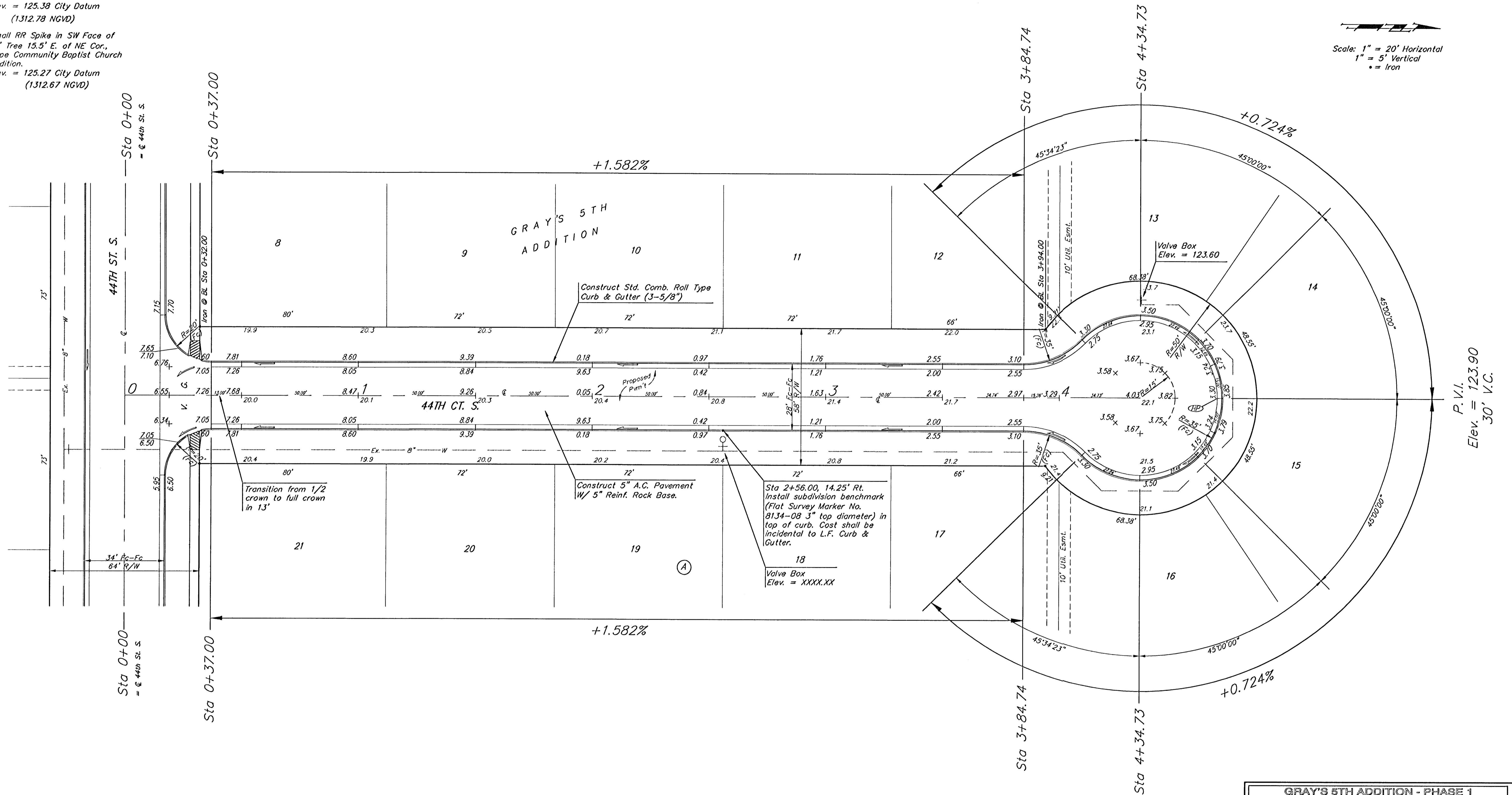


BENCHMARK:  
 Small RR Spike in W. Face of  
 Power Pole 59' S. and 52.5' E.  
 of NW Cor., SW 1/4, Sec. 14,  
 TWP. 28-S, R-1-W.  
 Elev. = 125.38 City Datum  
 (1312.78 NGVD)

Small RR Spike in SW Face of  
 12" Tree 15.5' E. of NE Cor.,  
 Hope Community Baptist Church  
 Addition.  
 Elev. = 125.27 City Datum  
 (1312.67 NGVD)

Scale: 1" = 20' Horizontal  
 1" = 5' Vertical  
 = Iron



NOTE: ROLL TYPE CURB & GUTTER TO BE CONSTRUCTED ON THE PAVEMENT SHOWN ON THIS SHEET. TOP OF CURB ELEVATIONS ARE GIVEN FOR FULL HEIGHT CURB.

GRAY'S 5TH ADDITION - PHASE 1  
**44TH CT. SOUTH**  
 STA 0+00 TO STA 4+34.73

**BAUGHMAN COMPANY P.A.**  
 ENGINEERING, SURVEYING, & PLANNING  
 316-282-7271 • 315 ELLIS • WICHITA, KANSAS 67211

PROJECT NUMBER  
**472-83562**

DESIGN NBW	DRAWN TMS	APPROVED	DATE 06/02	SCALE Noted	SHEET <b>9</b> OF <b>23</b>
---------------	--------------	----------	---------------	----------------	--------------------------------------

01-2-E198