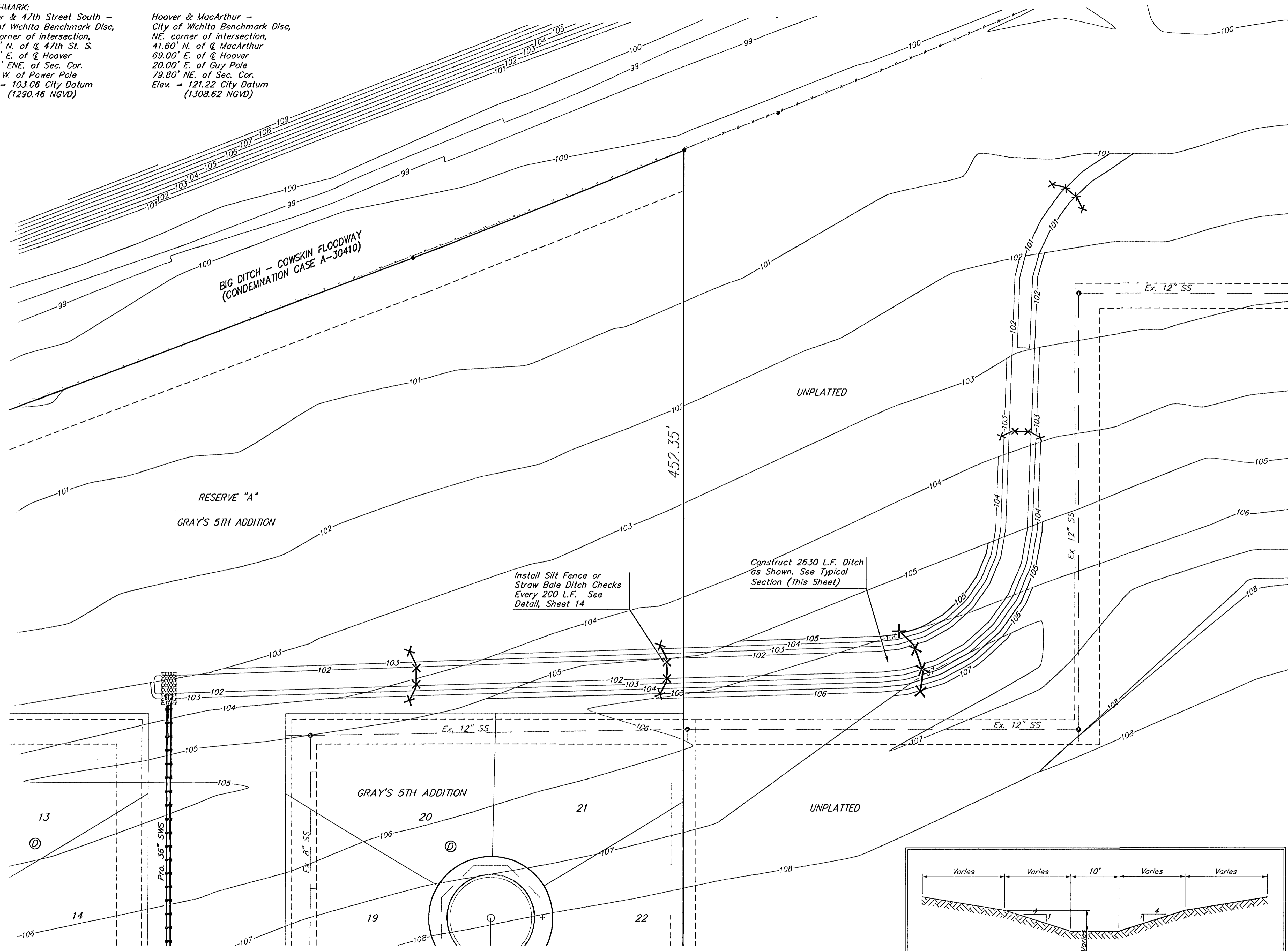


BENCHMARK:
 Hoover & 47th Street South -
 City of Wichita Benchmark Disc,
 NE. corner of intersection,
 21.60' N. of Q 47th St. S.
 71.50' E. of Q Hoover
 73.60' ENE. of Sec. Cor.
 5.90' W. of Power Pole
 Elev. = 103.06 City Datum
 (1290.46 NGVD)

Hoover & MacArthur -
 City of Wichita Benchmark Disc,
 NE. corner of intersection,
 41.60' N. of Q MacArthur
 69.00' E. of Q Hoover
 20.00' E. of Guy Pole
 79.80' NE. of Sec. Cor.
 Elev. = 121.22 City Datum
 (1308.62 NGVD)

Scale: 1" = 40'



Project Earthwork Totals

	R/W	Ditch	Totals
Excavation:	8,783	3,108	11,891 C.Y.
Loose Fill:	305	0	305 C.Y.
Compacted Fill:	213	0	213 C.Y.

Total Project Length
 2,060 L.F. = 0.39 Miles

GRAY'S 5TH ADDITION - PH. 1
DITCH PLAN
 CITY OF WICHITA

BAUGHMAN COMPANY P.A.
 ENGINEERING, SURVEYING, & PLANNING
 315-262-7271 • 315 ELLIS • WICHITA, KANSAS 67211

DESIGN NBW	DRAWN AEG	APPROVED	DATE 1/03	SCALE NOTED	SHEET 12 of 23
---------------	--------------	----------	--------------	----------------	-------------------------