

# REMINGTON PLACE 2ND

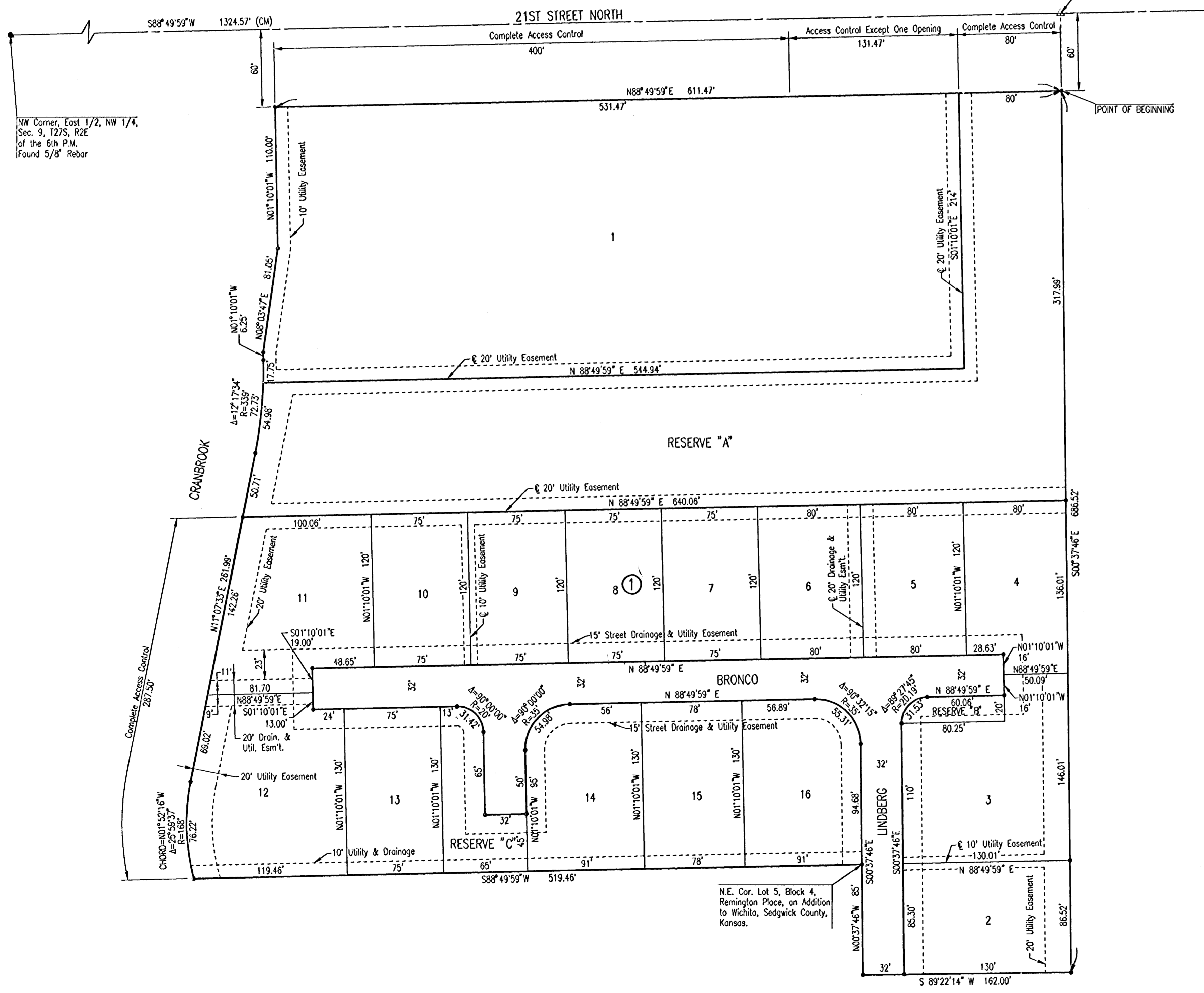
AN ADDITION TO WICHITA, SEDGWICK COUNTY, KANSAS

SCALE: 1" = 50'

• = 1/2" REBAR W/PEC CAP UNLESS OTHERWISE NOTED

B.M. #1 - CHISELED SQUARE ON CENTER OF CURB INLET ON THE SOUTH CURB OF 21ST ST. N., 30' SOUTH AND 40' WEST OF NORTH 1/4 CORNER SECTION 9, T27S, R2E. ELEV. = 195.385 (City Datum) ELEV. = 1382.785 N.G.V.D.

North 1/4 Corner, Sec. 9, T27S, R2E of the 6th P.M. Found 1/2" Rebar



NW Corner, East 1/2, NW 1/4, Sec. 9, T27S, R2E of the 6th P.M. Found 5/8" Rebar

N.E. Cor. Lot 5, Block 4, Remington Place, an Addition to Wichita, Sedgwick County, Kansas.

DSNR: BER OPER: ILS SCALE: 1"=50.00  
 C:\2002\02662\000\PLATRM2\_03-03-2003\_04:31:04.plt

No.	Revision	By	Date
CITY OF WICHITA, KANSAS NEIL D. CABLE P.E. - CITY ENGINEER			
<b>PLAT</b>			
CITY OF WICHITA PROJECT NO. 472-83678 <b>Professional Engineering Consultants, P.A.</b> 303 S. TOPEKA • WICHITA, KANSAS 67202 316-262-2691 • FAX 316-262-3003			
Designed by	BER	Job No.	35-02662
Drawn by	DEP	Date	December 2002
			SHEET 2 of 17

