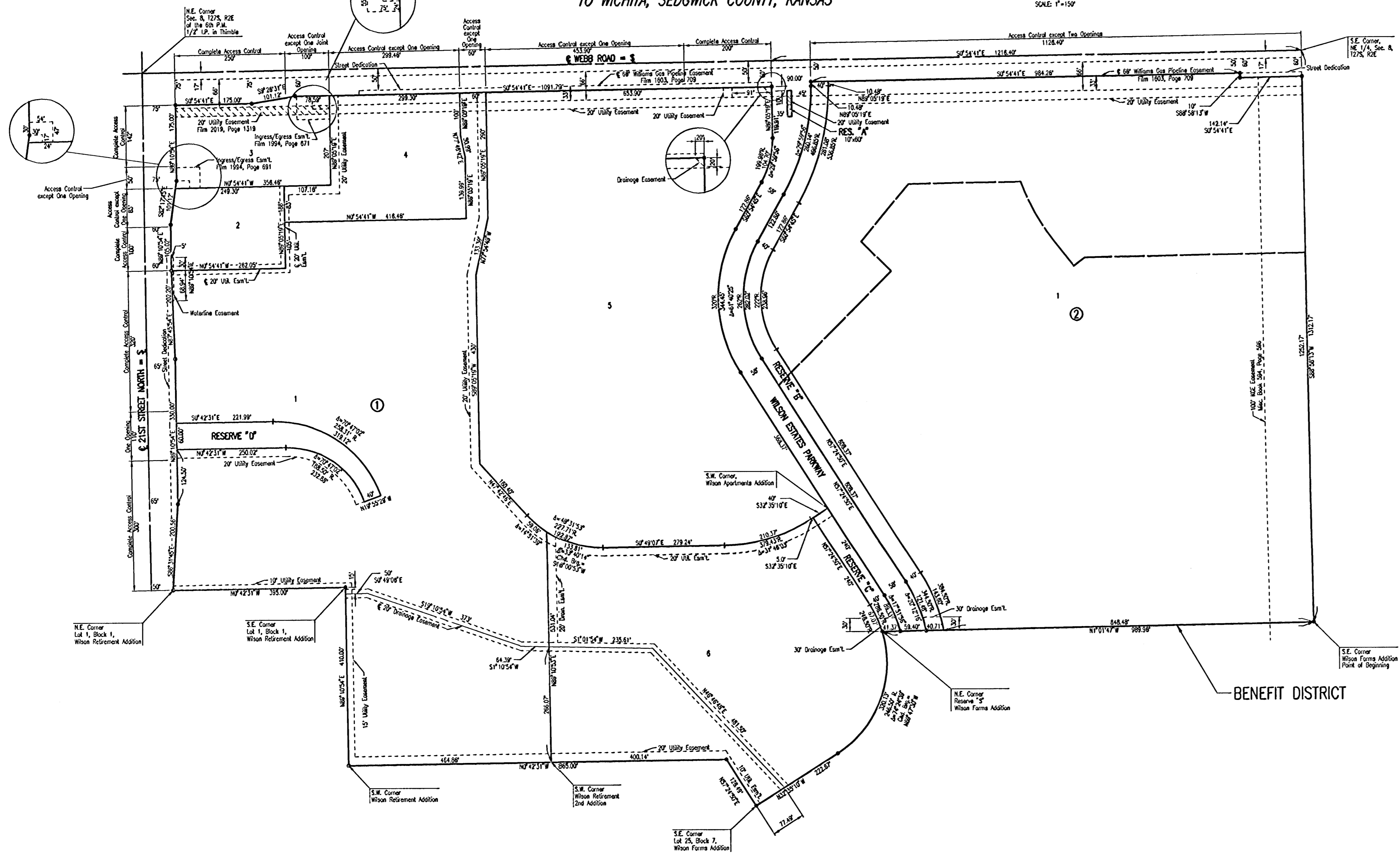
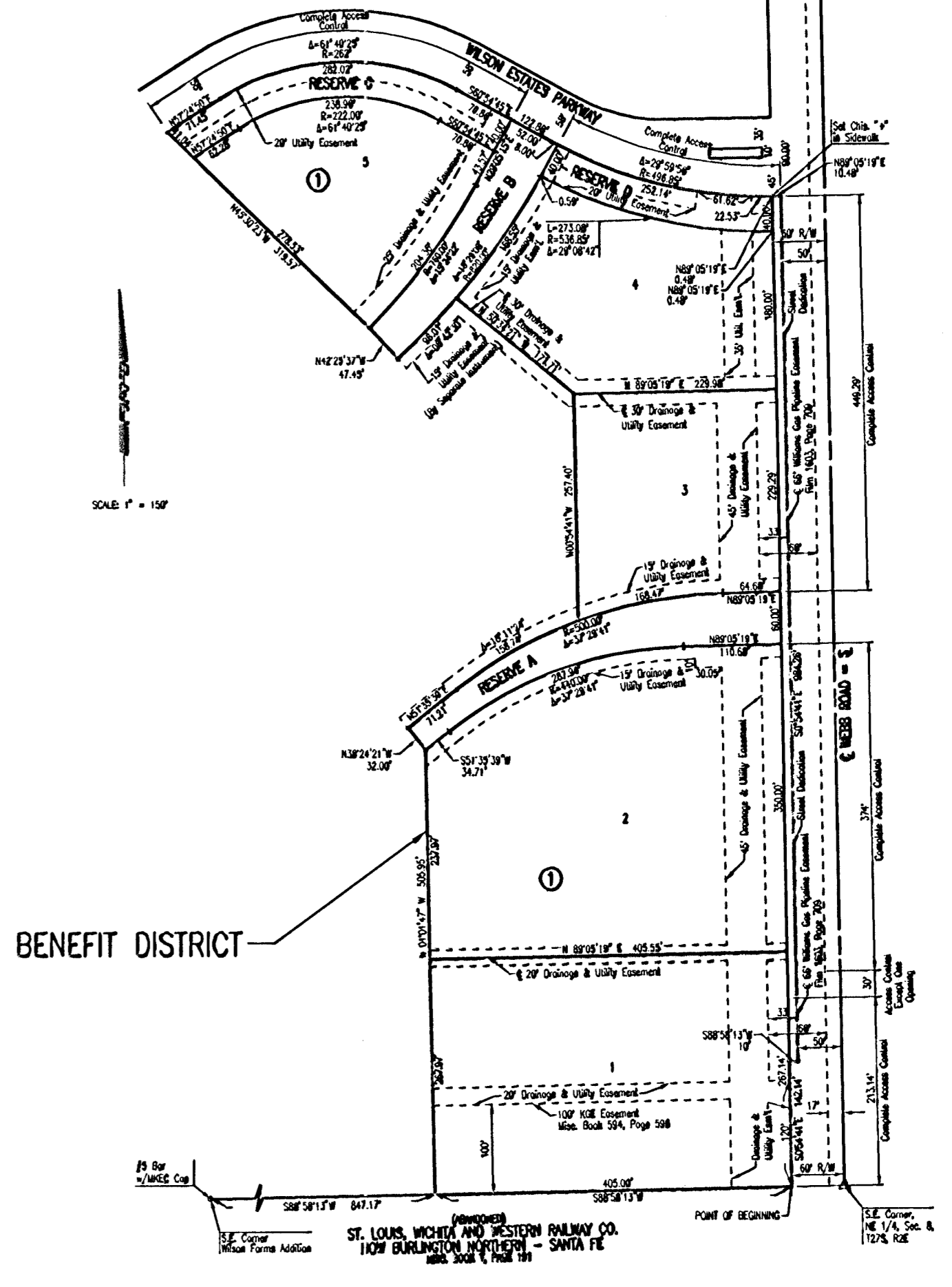


PROJECT NO.	SHEET NO.	TOTAL SHEETS
472-83877	2	7

LEGACY PARK WILSON ESTATES ADDITION TO WICHITA, SEDGWICK COUNTY, KANSAS



WILSON ESTATES MEDICAL PARK AN ADDITION TO WICHITA, SEDGWICK COUNTY, KANSAS



DSNR: BER OPER: BUS SCALE: 1"=150.00
 Q:\2002\02620\004\BENEFITDISTRICT 02-11-2003 01:41:43 pm

WEBB ROAD AND WILSON ESTATES PARKWAY

BENEFIT DISTRICT

Professional Engineering Consultants, P.A.
 303 S. TOPEKA • WICHITA, KANSAS 67202
 316-262-2691 • FAX 316-262-3003

Designed by	BER	Checked by	
Drawn by	SAW	Date	JANUARY 2003
		Job No.	02620-004