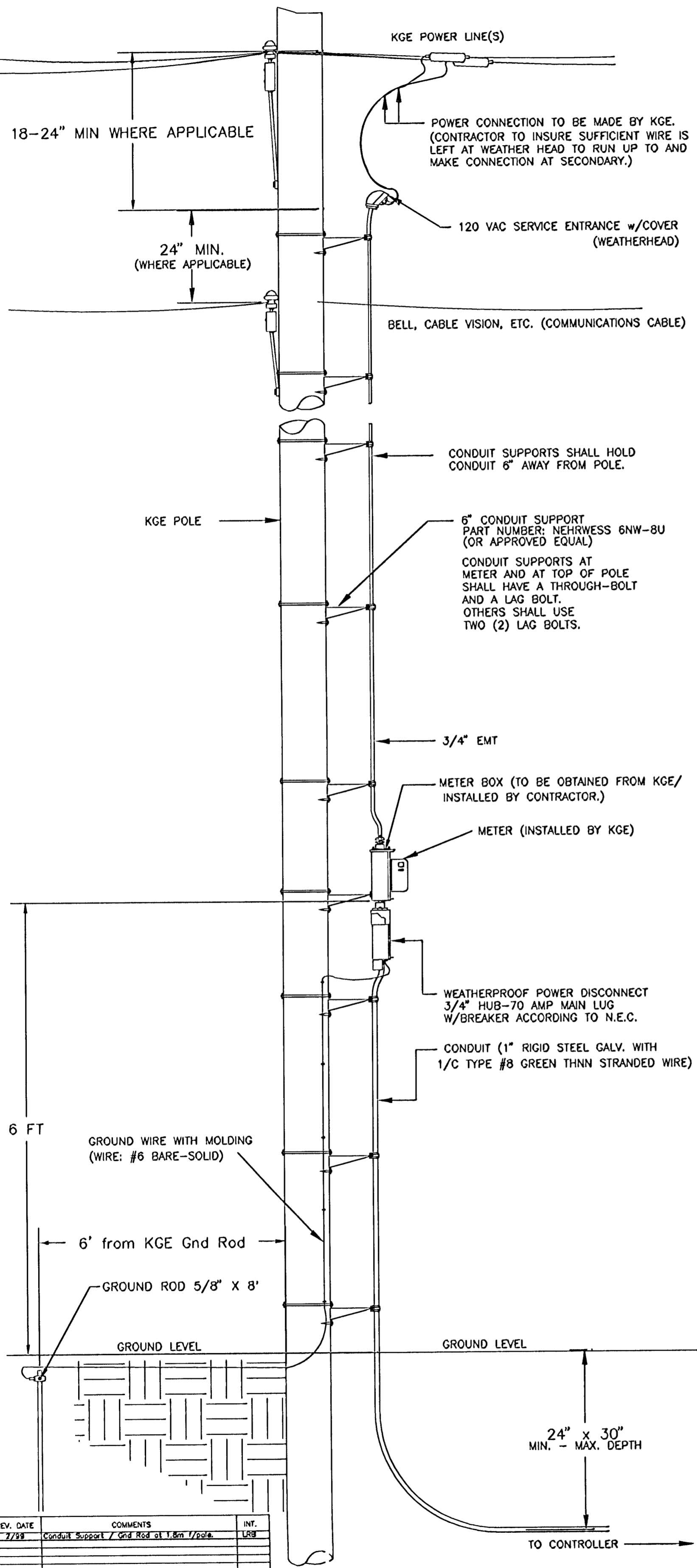
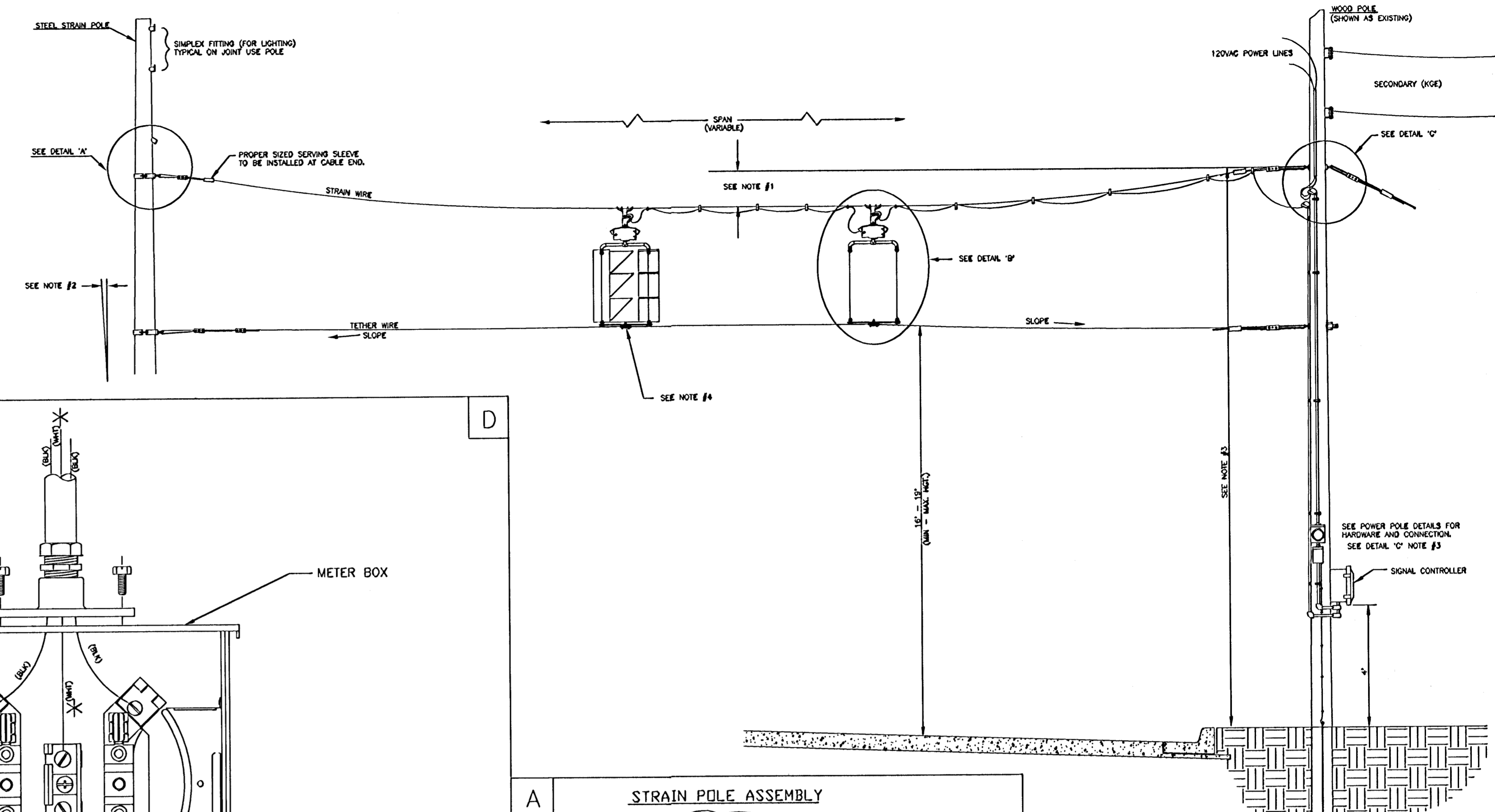


POWER POLE DETAILS



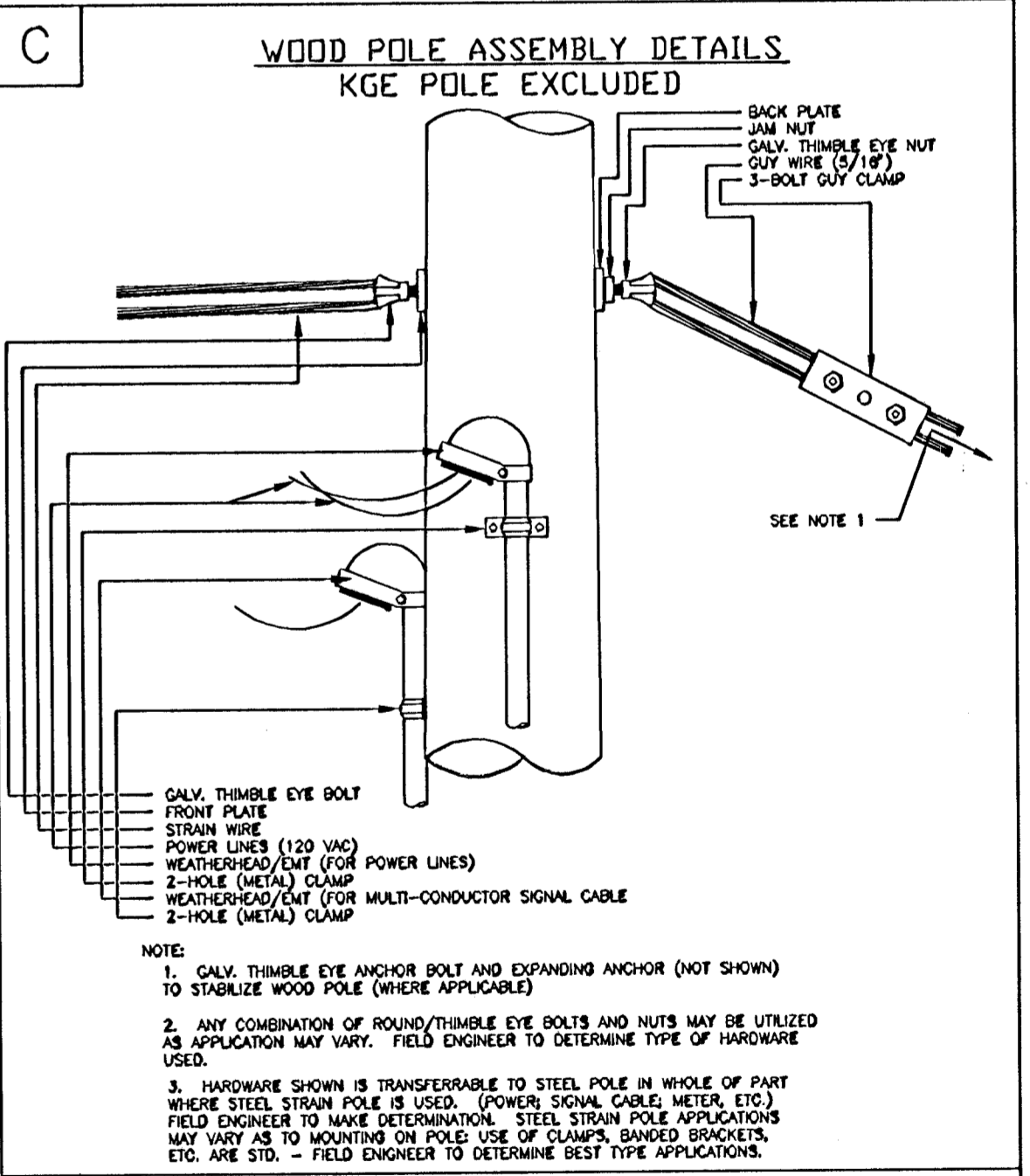
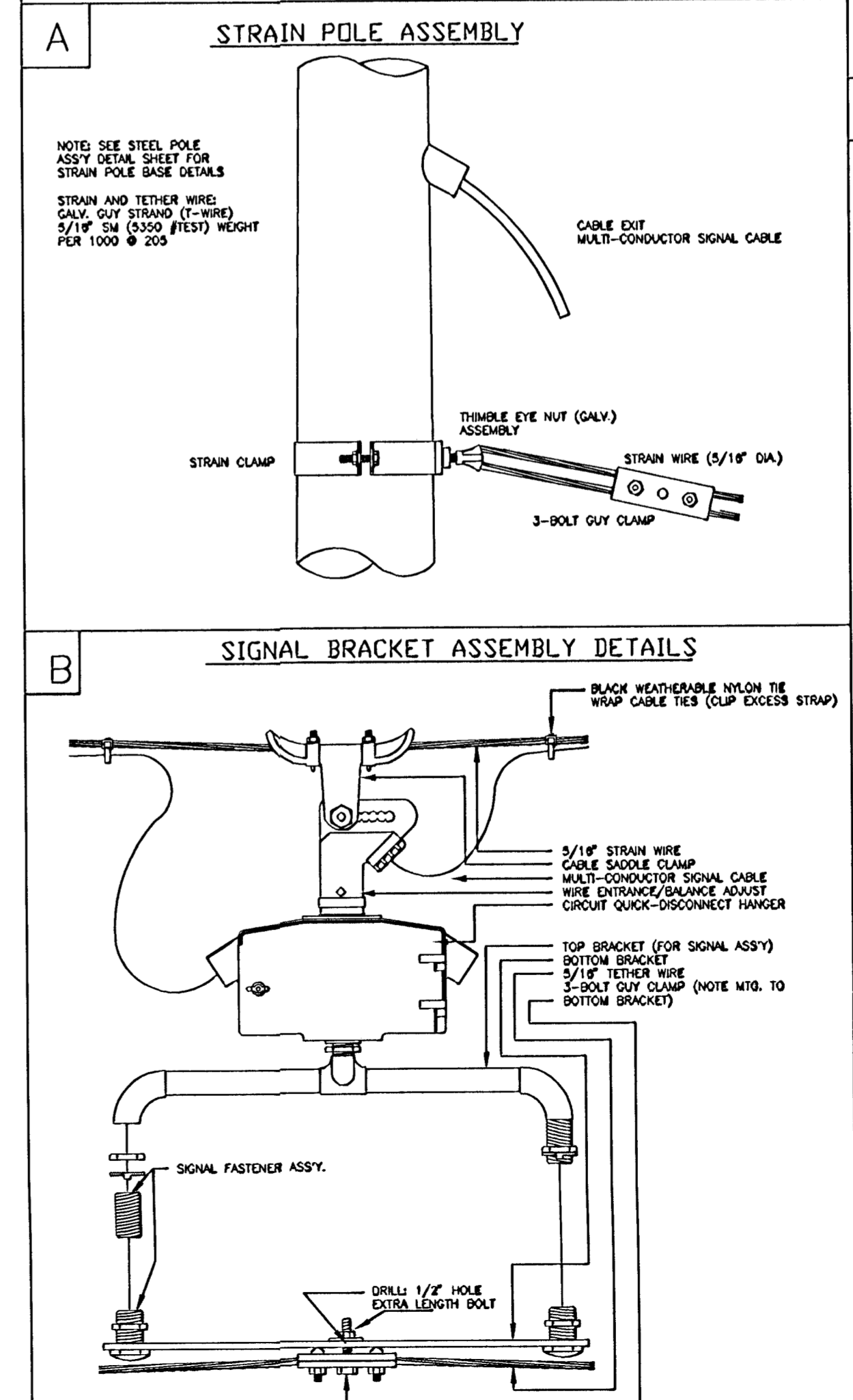
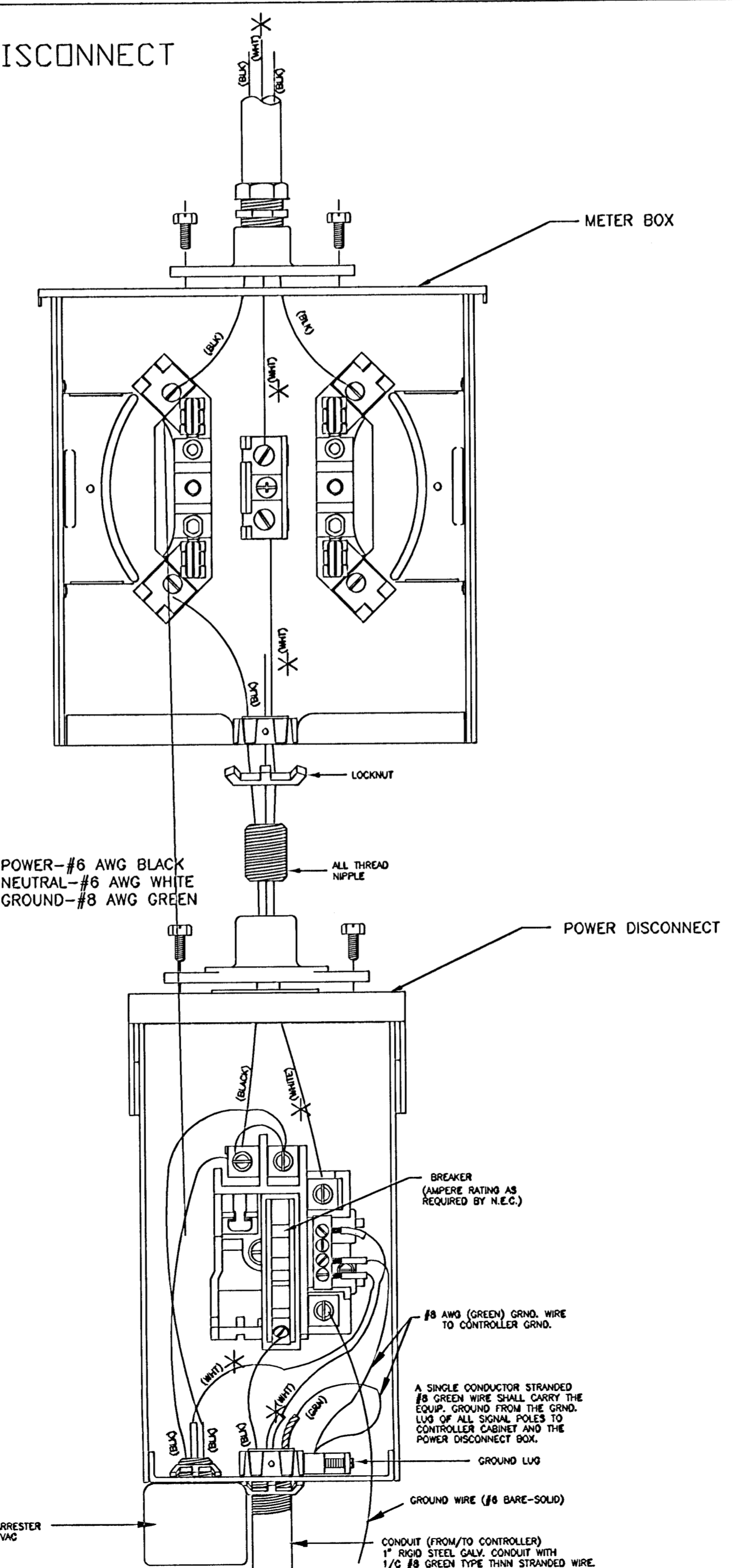
SPANWIRE ASSEMBLY DETAILS

1. MAX. SAG = 5% OF SPAN.
2. STANDARD BACKRAKE = 1.5%
3. HEIGHT OF STRAIN WIRE HOOK-UP TO BE DETERMINED BY FIELD ENGINEER. TRAFFIC SIGNAL CABLE TO BE SECURED TO STRAIN (SPAN) WIRE WEATHERABLE NYLON CABLE HANGERS (12" CTR.) DETAIL 'B'
4. TETHER CLAMP TO BE DESIGNED TO RELEASE UNDER 'HIGH WIND LOAD' TO PERMIT SIGNAL 'FREE SWING'.



METER BOX & POWER DISCONNECT DETAILS

NOTE:
*TO BE MARKED WITH WHITE TAPE



WILSON ESTATES PARKWAY AND WEBB ROAD		
POWER POLE AND SPAN POLE ASSEMBLY DETAILS		
PROJECT NUMBER 472-83677		
DRAWN BY: T.M.	SCALE NO SCALE	REVISED BY: L. B.
DATE: FEB. 96		DATE: 2/26/99
CITY OF WICHITA DEPARTMENT OF PUBLIC WORKS		
DIVISION OF TRAFFIC ENGINEERING WM. G. MCKINLEY P.E. TRAFFIC ENGINEER		SHEET 6 OF 7

DSNR, REF. OREF: BS. SCALE: 1=1.00
 C:\2002\02620\004\WP-SP 02-11-2003 01:47:21 pm

REV. DATE	COMMENTS	INT.
7/28	Conduit Support / See Ref at 1.8m / 2004	USP