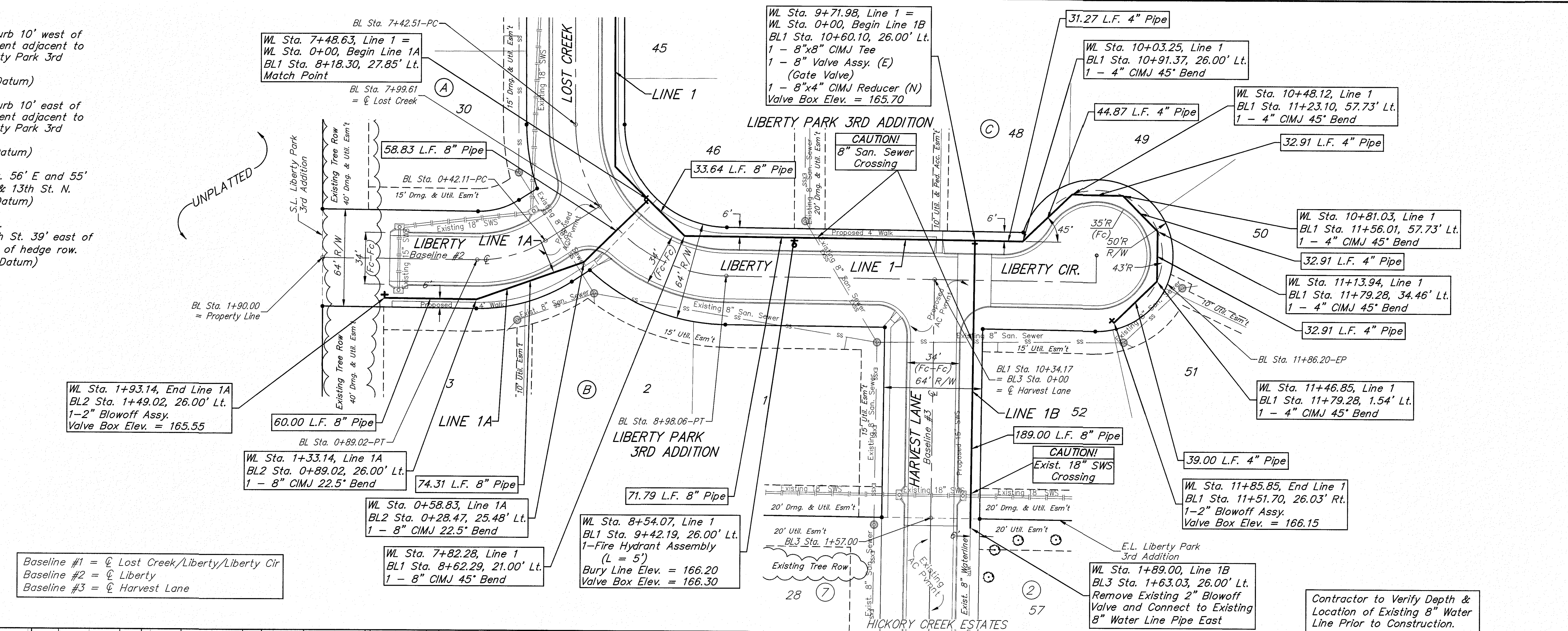
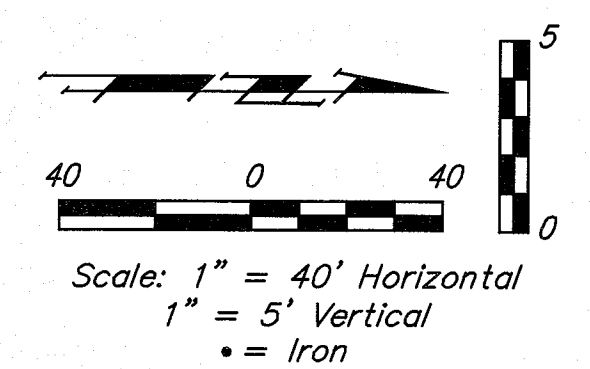
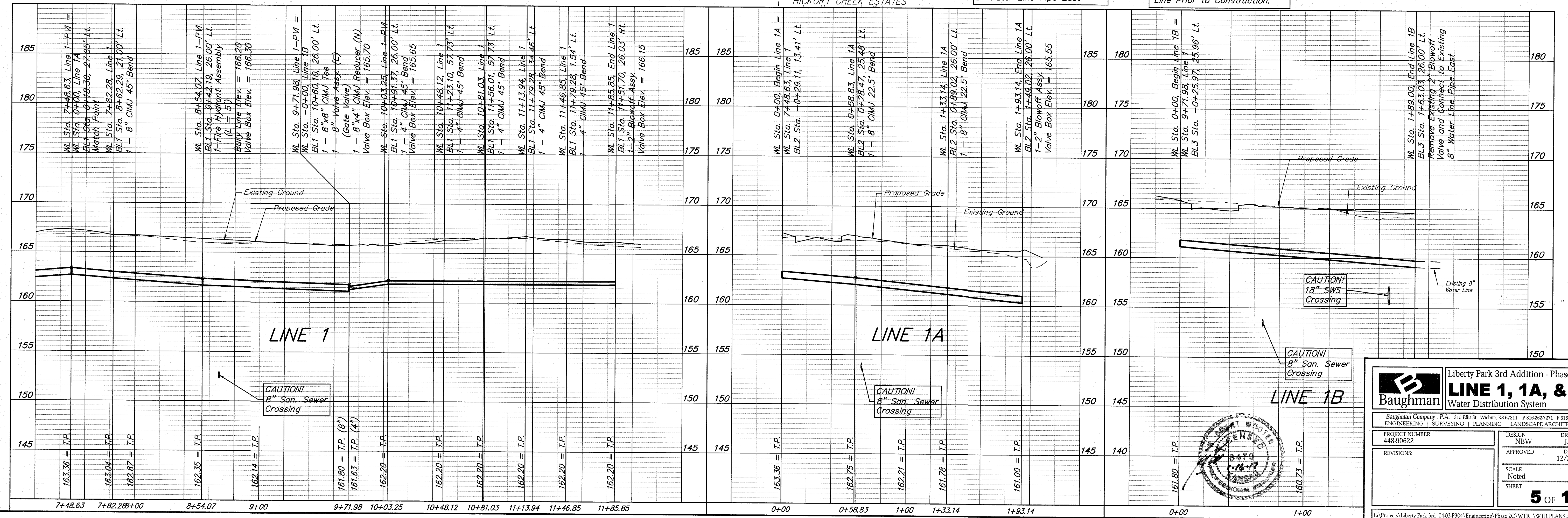


BENCHMARKS:
 "□" Cut in top of curb 10' west of end of existing pavement adjacent to Lot 37, Block C, Liberty Park 3rd Addition
 Elev. = 168.20 (City Datum)
 "□" Cut in top of curb 10' east of end of existing pavement adjacent to Lot 52, Block C, Liberty Park 3rd Addition
 Elev. = 164.21 (City Datum)
 C.O.W. Benchmark Disk. 56' E and 55' N of \odot 135th St. W. & 13th St. N.
 Elev. = 167.83 (City Datum)
 C.O.W. Benchmark Disk. 1/2 mile south of 13th St. 39' east of \odot 135th St. 18' south of hedge row.
 Elev. = 159.71 (City Datum)



Baseline #1 = \odot Lost Creek/Liberty/Liberty Cir
 Baseline #2 = \odot Liberty
 Baseline #3 = \odot Harvest Lane



Liberty Park 3rd Addition - Phase 2C
LINE 1, 1A, & 1B
 Water Distribution System

Baughman

Baughman Company, P.A. 315 Elm St. Wichita, KS 67211 F 316-262-7271 F 316-262-0149
 ENGINEERING, SURVEYING, PLANNING, LANDSCAPE ARCHITECTURE

PROJECT NUMBER: 448-90622
 DESIGN: NBW
 DRAWN: JAK
 APPROVED: DATE: 12/27/16
 SCALE: Noted
 SHEET: 5 OF 13

REVISIONS:

1-16-17

E:\Projects\Liberty Park 3rd_0403P304\Engineering\Phase 2C\WTR_WTR.PLAN.Swg