

CONTROL POINTS

- Pt. No. 101**
 N: 1,669,754.4920 E: 1,615,545.1910
 1/2" REBAR
 1. 47.00' NORTHWEST TO BENCHMARK #201
 2. 26.20' WEST TO CENTER OF STORM SEWER MANHOLE
 3. 18.70' NORTH TO CENTERLINE OF YOSEMITE
- Pt. No. 102**
 N: 1,669,734.3010, E: 1,616,031.0260
 1/2" REBAR
 1. 11.00' WEST TO MAG NAIL IN TOP OF GUARD RAIL POST
 2. 25.55' NORTH TO MAG NAIL IN WEST FACE OF 6" HACKBERRY TREE
 3. 31.00' SOUTH TO CENTERLINE OF YOSEMITE
- Pt. No. 103**
 N: 1,669,536.8840, E: 1,616,433.4500
 1/2" REBAR
 1. 3.60' WEST TO MAG NAIL IN TOP OF CABLE POST
 2. 46.00' SOUTH TO CENTERLINE OF YOSEMITE
 3. 448.24' WEST NORTHWEST TO HORIZONTAL CONTROL POINT #102
- Pt. No. 104**
 N: 1,669,154.9370, E: 1,616,790.3440
 TEE POST
 1. 47.00' SOUTH TO CENTERLINE OF YOSEMITE
 2. 522.70' WEST TO HORIZONTAL CONTROL POINT #103
 3. 672.00' EAST TO HORIZONTAL CONTROL POINT #105
- Pt. No. 105**
 N: 1,668,748.5790, E: 1,617,325.4960
 1/2" REBAR
 1. 5.00' NORTHWEST TO CHISELED "d" ON HEADWALL
 2. 41.50' SOUTH TO CENTERLINE OF YOSEMITE
 3. 61.50' EAST TO CENTERLINE OF TYLER ROAD
- Pt. No. 106**
 N: 1,669,203.2450, E: 1,617,670.1510
 1/2" REBAR
 1. 10.20' SOUTHWEST TO CITY OF WICHITA DISK ON BRIDGE HUB GUARD
 2. 4.00' WEST TO MAG NAIL IN TOP OF GUARD RAIL POST
 3. 9.60' SOUTH TO MAG NAIL IN TOP OF FENCE POST
- Pt. No. 107**
 N: 1,669,940.3090, E: 1,617,978.8560
 1/2" REBAR
 1. 10.00' WEST TO EAST EDGE OF ASPHALT SHOULDER TYLER ROAD
 2. 80.70' EAST SOUTHEAST TO CHISELED "d" (BENCHMARK #206)
 3. 799.00' SOUTH TO HORIZONTAL CONTROL POINT 106
- Pt. No. 108**
 N: 1,670,498.5840, E: 1,618,087.1300
 1/2" REBAR
 1. 45.00' WEST TO CENTERLINE OF TYLER ROAD
 2. 13.00' SOUTHEAST TO TOP CENTER OF SOUTH END OF CMP
 3. 30.60' NORTH NORTHEAST TO TOP CENTER OF NORTH END OF CMP
- Pt. No. 109**
 N: 1,670,929.9450, E: 1,618,105.5820
 TEE POST EAST OF 2625 SOUTH TYLER ROAD, BUILDING ALONG EAST R/W OF TYLER ROAD
 1. 3.00' EAST TO CHAIN LINK FENCE RUNNING NORTH-SOUTH
 2. 431.75' SOUTH TO HORIZONTAL CONTROL POINT #108
 3. 131.33' SOUTH TO CENTER OF FIRE HYDRANT

WATERLINE NO. 1				
COORDINATE LIST				
POINT	NORTHING	EASTING	STATION	DESCRIPTION
5000	1,669,796.6340	1,615,510.0460	0+00.00	BLOWOFF
5001	1,669,803.2569	1,615,516.1495	0+09.00	BEND
5002	1,669,804.1928	1,615,539.0781	0+31.95	BEND
5003	1,669,719.5094	1,615,542.5345	1+16.70	PC
5004	1,669,720.2789	1,615,622.5179	1+96.70	HYDRANT
5005	1,669,553.2408	1,616,228.4561	8+31.70	HYDRANT
5006	1,669,229.0035	1,616,604.7636	13+31.59	PT
5007	1,669,041.1404	1,616,752.0171	15+70.29	PC
5008	1,668,865.7199	1,616,929.2159	18+20.29	HYDRANT
5009	1,668,775.6086	1,617,069.5604	19+87.27	PT
5010	1,668,605.1683	1,617,391.5269	23+51.56	TEE
5011	1,668,617.0441	1,617,397.8148	23+65.00	HYDRANT
5012	1,669,257.7748	1,617,737.0627	30+90.00	HYDRANT
5013	1,669,264.8561	1,617,740.8121	30+98.01	BEND
5014	1,669,343.9490	1,617,805.2037	32+00.00	PC/BEND
5015	1,670,224.9848	1,618,097.7435	41+32.21	PT
5016	1,670,328.3358	1,618,107.7808	42+36.05	TEE
5017	1,670,507.4929	1,618,125.1802	44+16.05	BEND
5018	1,670,737.4342	1,618,086.8967	46+49.16	BEND
5019	1,670,800.2735	1,618,088.8686	47+12.03	EXIST. WV

WATERLINE NO. 2				
COORDINATE LIST				
POINT	NORTHING	EASTING	STATION	DESCRIPTION
5016	1,670,328.3358	1,618,107.7808	0+00.00	TEE
5020	1,670,340.9021	1,617,978.3896	1+40.00	BEND
5021	1,670,334.0864	1,617,977.7277	1+46.85	HYDRANT
5022	1,670,326.0961	1,617,976.9517	1+55.85	BEND

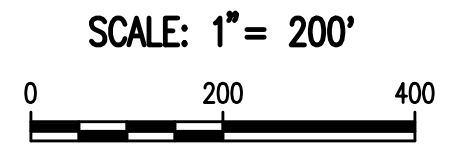
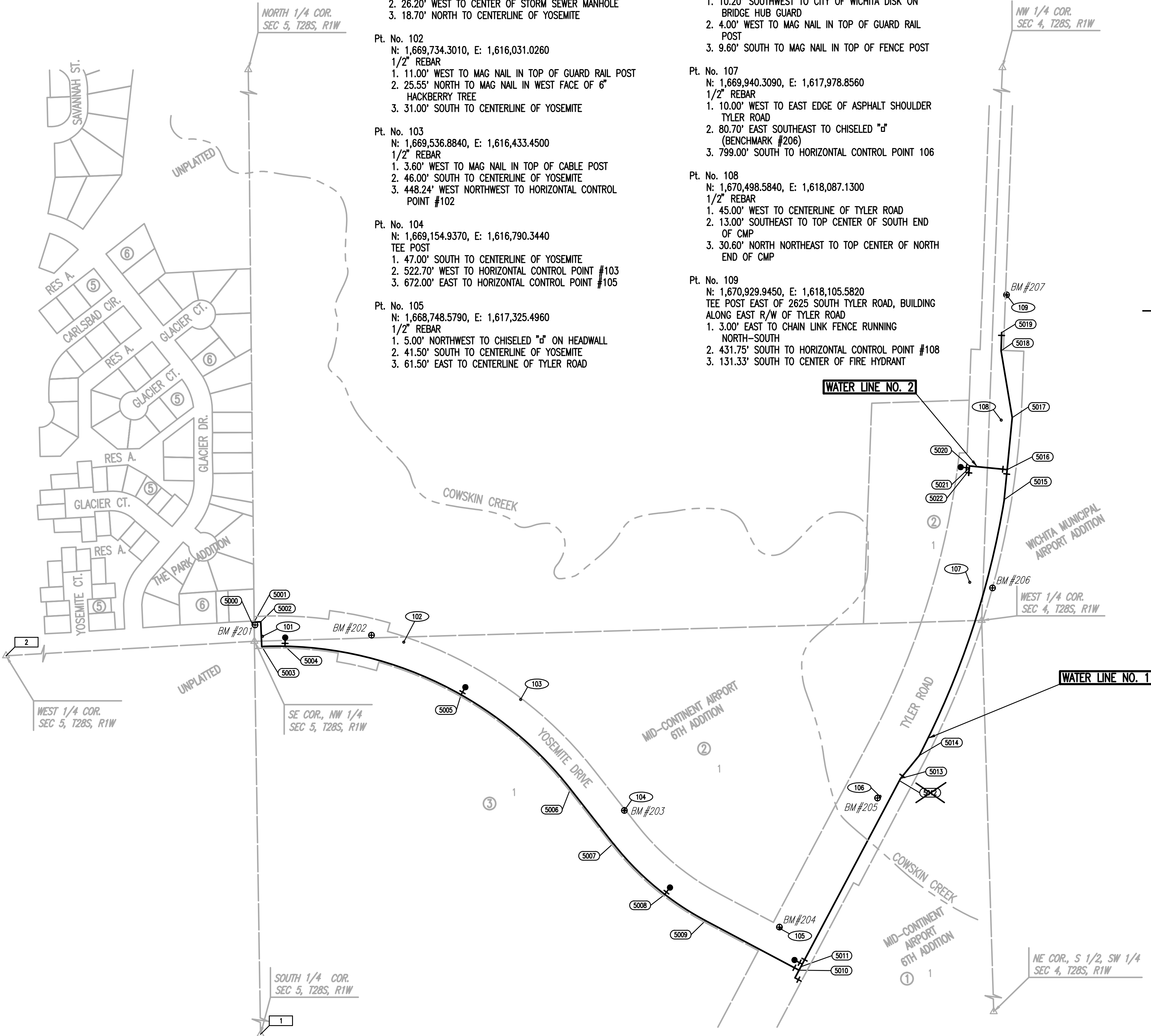
5000 = COORDINATE POINT NO.

SECTION CORNER

- Pt. No. 1**
 SOUTH 1/4 CORNER, SEC 5, T28S, R1W
 N: 1,667,063.1650, E: 1,615,558.8680
 3/4" IRON PIPE 10" BELOW SURFACE
 56.00' NORTH WEST TO NAIL AND WASHER IN SOUTH FACE OF A POWER POLE
 37.00' SOUTH TO NAIL IN WEST FACE OF TREE
 51.80' SOUTH EAST TO TOP CENTER OF "U" POST
- Pt. No. 2**
 WEST 1/4 CORNER, SEC 5, T28S, R1W
 N: 1,669,588.8750, E: 1,612,950.8260
 1/2" REBAR 2" BELOW SURFACE
 48.50' EAST TO 3 NAILS IN SOUTH FACE OF A POWER POLE
 140.00' NORTH TO CENTERLINE OF YELLOWSTONE
 0.50' WEST TO CENTERLINE OF MAIZE ROAD

BENCH MARK LIST

- BM #201** - CHISELED "d" ON FRONT TOP OF CURB INLET, NORTH SIDE OF YOSEMITE, 400' EAST OF GLACIER STREET. ELEV. 1315.71 (NAVD 88)
- BM #202** - CITY OF WICHITA DISK ON SOUTH END OF WEST WING WALL, NORTH END OF REINFORCED CONCRETE BOX UNDER YOSEMITE. ELEV. 1306.90 (NAVD 88)
- BM #203** - TEE POST, SEE CONTROL POINT #104. ELEV. 1301.25 (NAVD 88)
- BM #204** - CHISELED "d" ON SOUTHEAST CORNER OF NORTH HUB GUARD FOR REINFORCED CONCRETE BOX UNDER YOSEMITE, WEST OF TYLER ROAD. ELEV. 1305.30 (NAVD 88)
- BM #205** - CITY OF WICHITA DISK ON TOP OF NORTH END OF EAST HUB GUARD FOR TYLER ROAD BRIDGE, NORTH OF YOSEMITE. ELEV. 1310.63 (NAVD 88)
- BM #206** - CHISELED "d" ON CONCRETE AT BASE OF CHAIN LINK FENCE POST ALONG EAST R/W OF TYLER ROAD, EAST OF HORIZONTAL CONTROL POINT #107. ELEV. 1305.08 (NAVD 88)
- BM #207** - TEE POST, SEE CONTROL POINT #109. ELEV. 1324.96 (NAVD 88)



Scaled 01-10-2017 4:45:11 PM by CSI
 Plot Scale 1:1 01-10-2017 4:51:21 PM by CSI
 U:\Wichita-Civil\2015\15961\000\Drawings\15961-000-003-WATERLINE BUBBLE.MXD

JOSHUA G. JANZEN
 LICENSED
 24136
 01/12/2017
 PROFESSIONAL ENGINEER
 KANSAS

No.	Revision	By	Date
WATER DISTRIBUTION SYSTEM IMPROVEMENTS WATERLINE ON TYLER ROAD AND YOSEMITE WATERLINE BUBBLE MAP GARY JANZEN, P.E. - CITY ENGINEER CITY OF WICHITA PROJECT NO. 448-90717 PROFESSIONAL ENGINEERING CONSULTANTS, P.A. 303 SOUTH TOPEKA WICHITA, KS 67202 316-262-2691 www.pec1.com			
Designed by	MDK, SAD	Job No.	35-15961-0-0042
Drawn by	CSL, KTD	Date	April 2016

Sht. 3 of 17