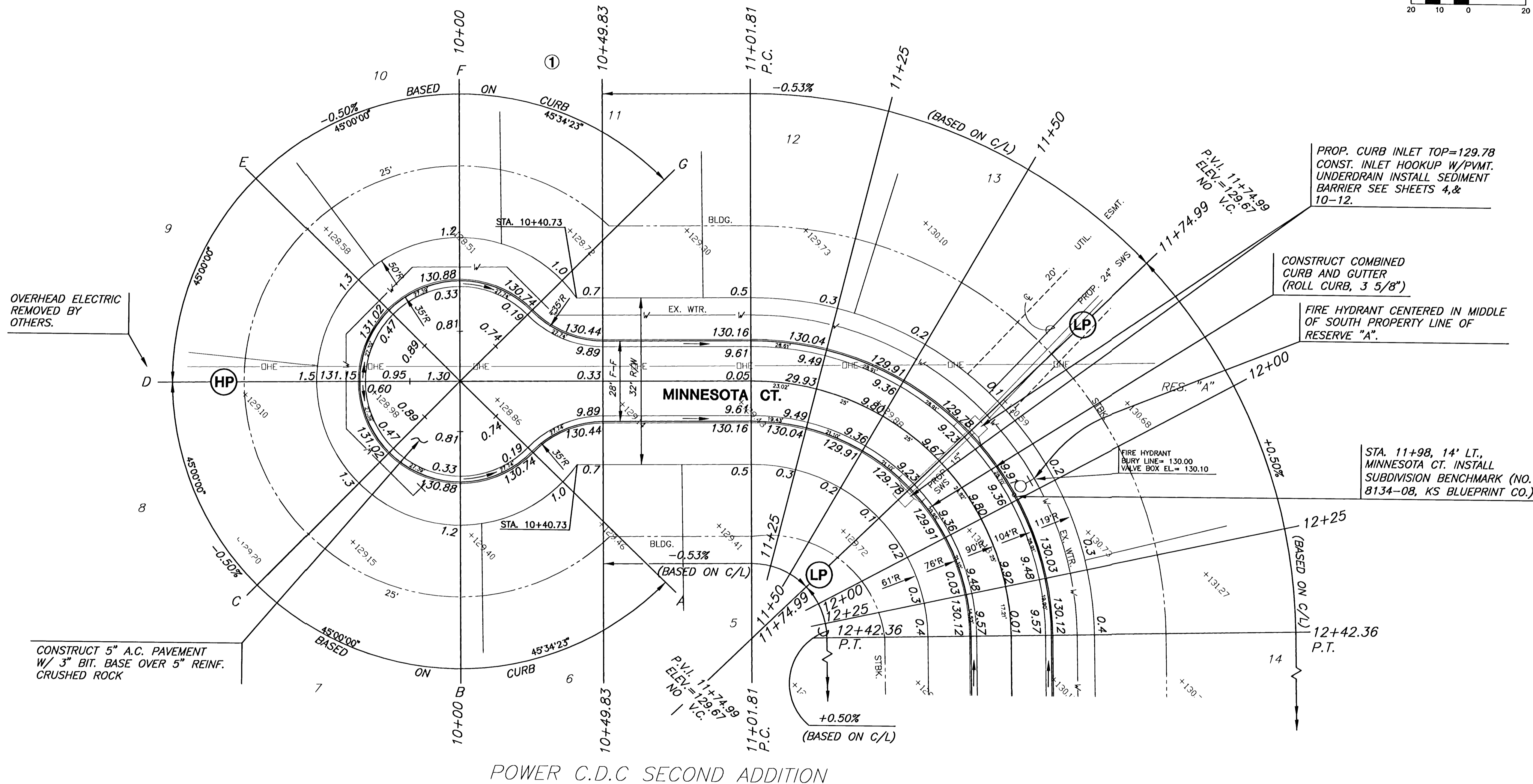
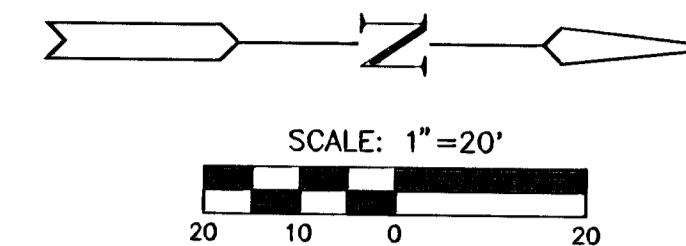


POWER C.D.C SECOND ADDITION



POWER C.D.C SECOND ADDITION

CURVE TABLE

$\Delta = 89^{\circ}28'36''$ R = 90.00' T = 89.18' L = 140.55' LC = 126.70'					
CURVE DATA BASED ON CENTERLINE $\Delta / 2 = 44^{\circ}44'18''$					
CHORD LENGTH					
STATION	ARC	8' Off LICb	8' Off RICb	DEFLECTION	TOTAL DEFLECTION
11+01.81				00'00"00"	00'00"00"
11+25.00	23.19'	28.78'	17.47'	07'22"54"	07'22"54"
11+50.00	25.00'	31.01'	18.83'	07'57"28"	15'20'22"
11+75.00	25.00'	31.01'	18.83'	07'57"28"	23'17'49"
12+00.00	25.00'	31.01'	18.83'	07'57"28"	31'15'17"
12+25.00	25.00'	31.01'	18.83'	07'57"28"	39'12'45"
12+42.36	17.36'	21.57'	13.10'	05'31"33"	44'44'18"

Def/Ft = 19.09859 Min.

SUBDIVISION BENCH MARKS

NO.	STREET AND STATION	FROM CL	DESCRIPTION	ELEVATIONS
1	MINNESOTA CT. STA., 11+98	14' LT	Install subdivision benchmark 14' North of Minnesota Ct. E & 32.19' West of Southeast corner of Reserve "A"	
2	26TH ST. N. STA., 10+42	15' LT	Install subdivision benchmark 15' North of 26th St. No. E & 11.62' East of Northwest corner of Lot 23, Block 1.	

NOTE: CONTRACTOR SHALL INSTALL SUBDIVISION BENCH MARKS ("FLAT SURVEY MARKERS NO. 8134-08 3" TOP DIAMETER" PROVIDED BY KANSAS BLUE PRINT CO., INC.) COSTS TO BE CONSIDERED SUBSIDIARY TO CONSTRUCTION OF COMBINED CURB AND GUTTER.

NOTE: TOP OF CURB ELEVATIONS SHOWN ARE FOR FULL CURB. CONSTRUCT COMBINED CURB AND GUTTER, ROLLED (3 3/8")

H:\CIVIL\02035\DWG\PAV\02035E1.DWG



POWER C.D.C. SECOND ADDITION
PROJECT NAME

PAVING PLAN - MINNESOTA COURT
SHEET TITLE

JTC	DM	JTC
DESIGN BY:	DRAWN BY:	CHECKED BY:
APRIL 2003	02035E1	6 / 20
DATE	JOB NO.	SHEET/OF