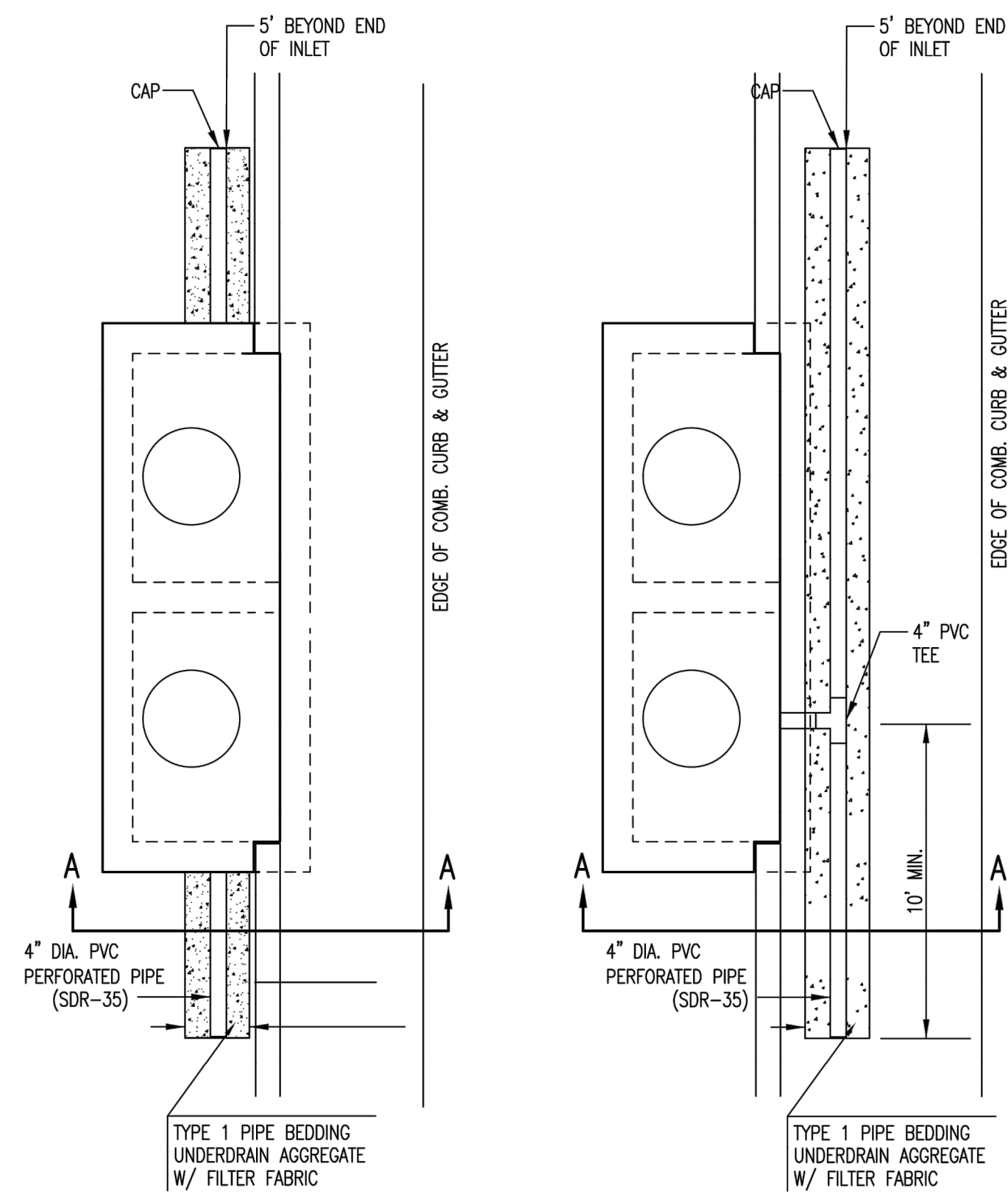
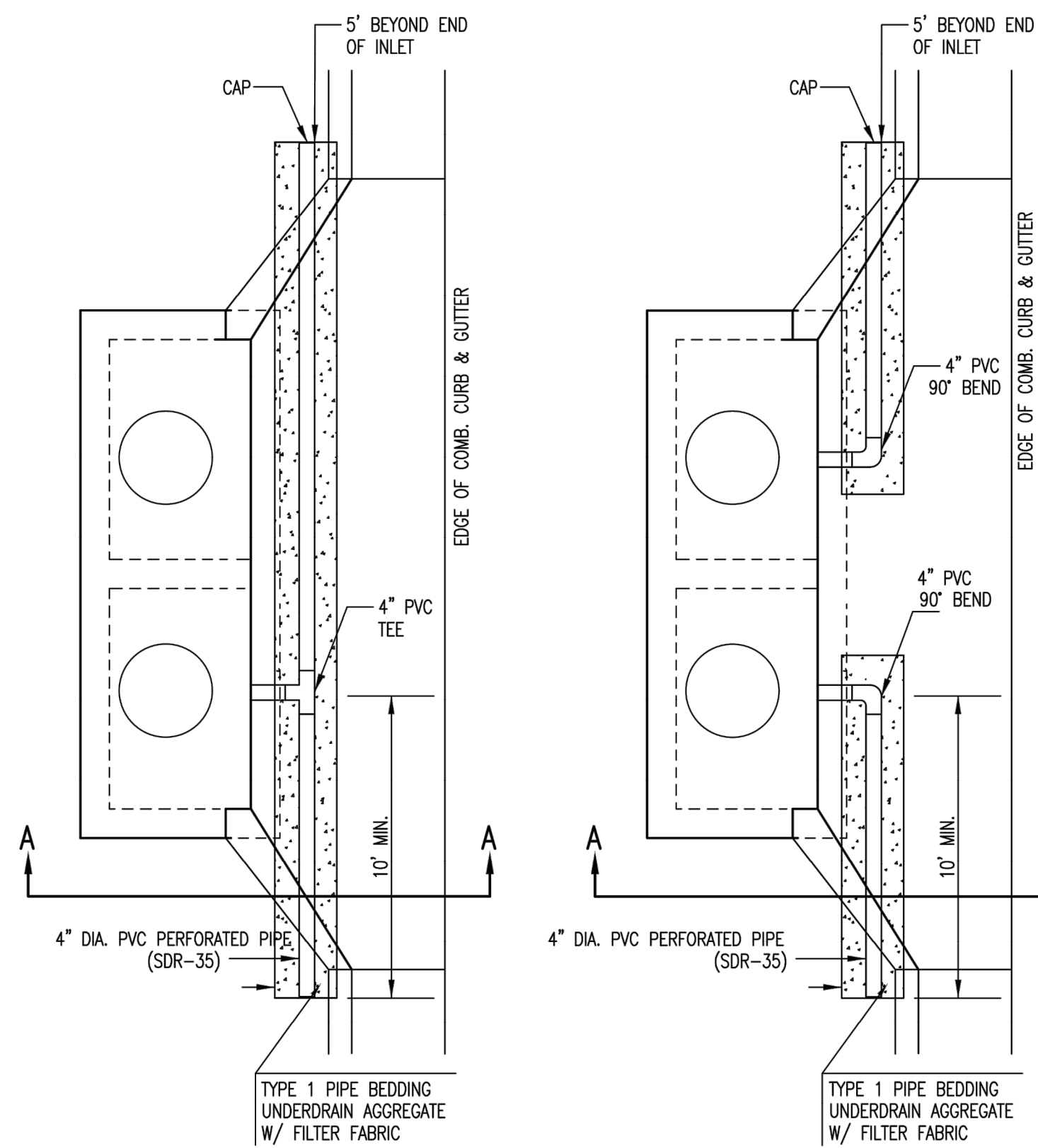


PAVEMENT UNDERDRAIN SHALL BE INSTALLED ON ALL CURB INLETS.



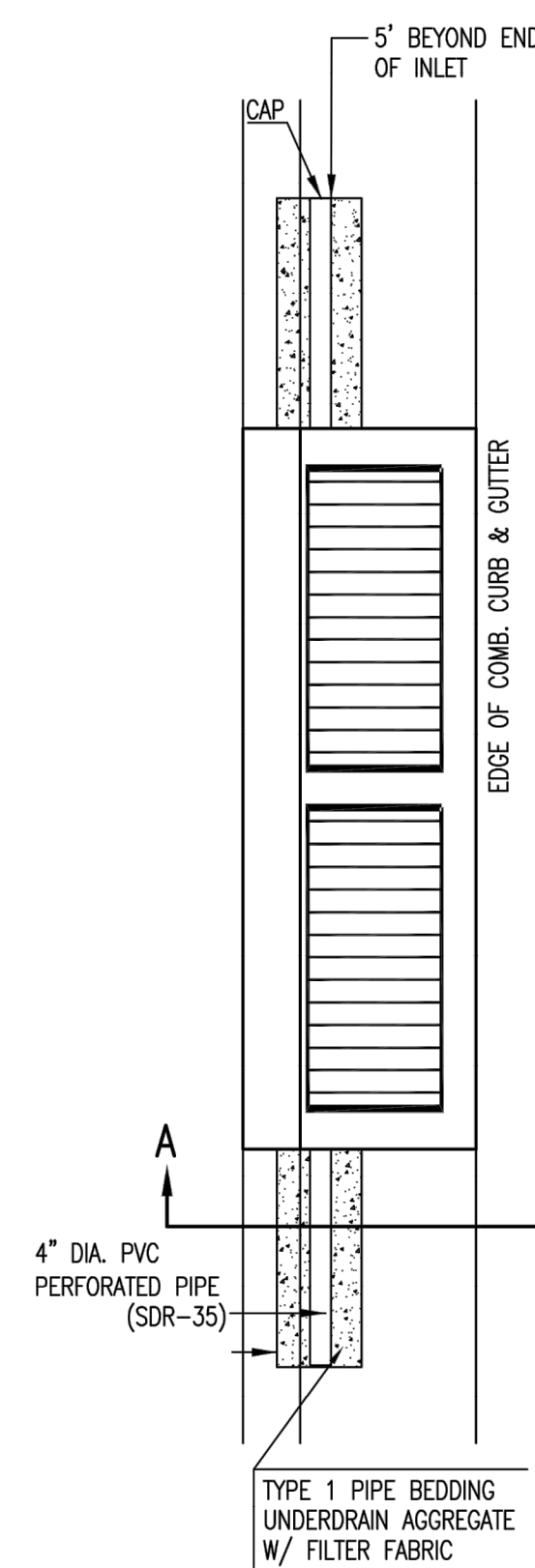
TYPE 1  
OPTION 1

TYPE 1  
OPTION 2

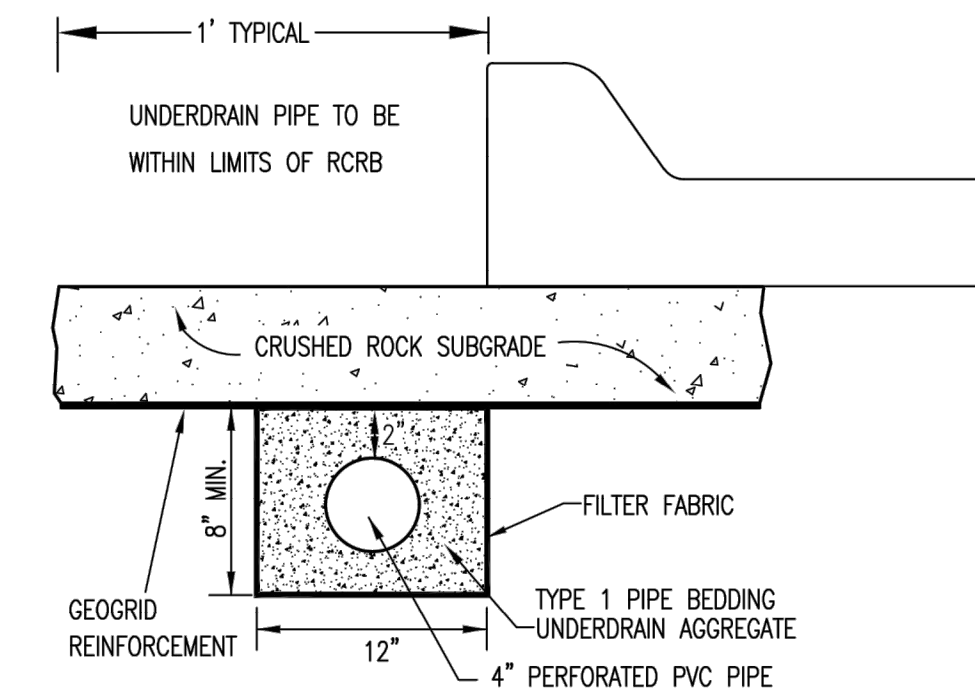


TYPE 1-A INLET  
OPTION 1

TYPE 1-A INLET  
OPTION 2



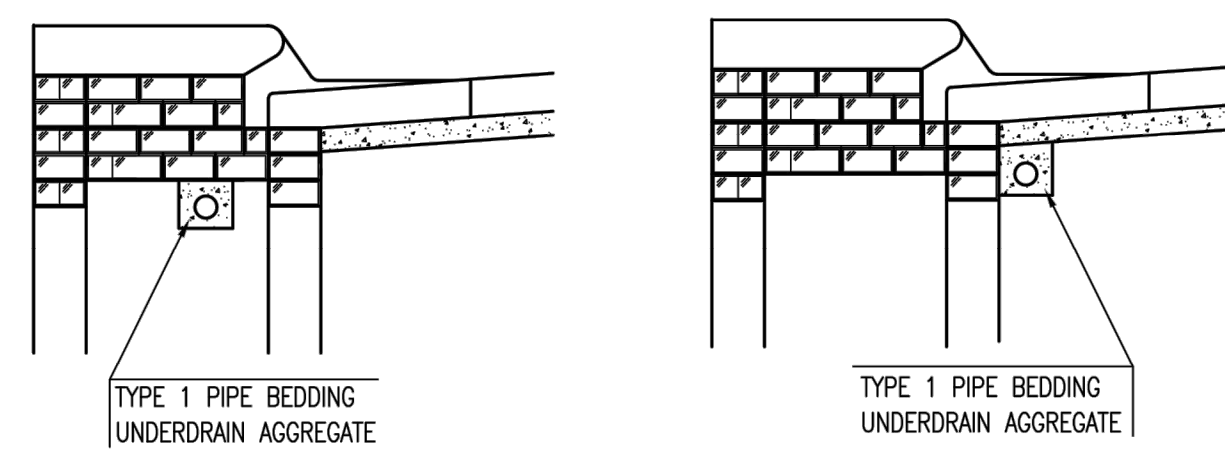
TYPE 2



SECTION A-A (TYPICAL)

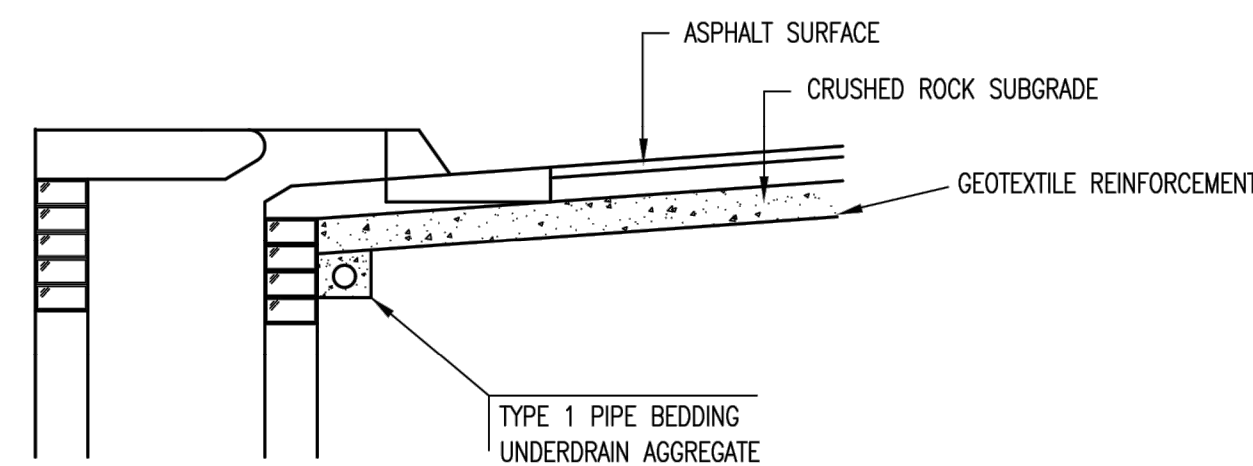
GENERAL NOTES

- PAVEMENT CONTRACTOR WILL BE REQUIRED TO INSTALL SDR 35, 4" PERFORATED DRAIN PIPE AND TEE AS INDICATED IN THE DETAILS.
- WHEN SWS CONSTRUCTED BY SEPARATE PROJECT, SWS CONTRACTOR SHALL INSTALL SDR 35, 4" DRAIN PIPE STUB ONLY THROUGH WALLS OF CURB INLETS AND CAP TO ALLOW FUTURE CONNECTION OF TEE AND ADDITIONAL DRAIN PIPE BY OTHERS.
- UNDERDRAIN PIPE SHALL BE PAID AS A MEASURED QUANTITY BY THE LINEAL FOOT.



(MIN. 16 PERFORATIONS PER LIN. FT. @ 1/4" DIA.)  
 PERFORATIONS TO BE ON BOTTOM HALF

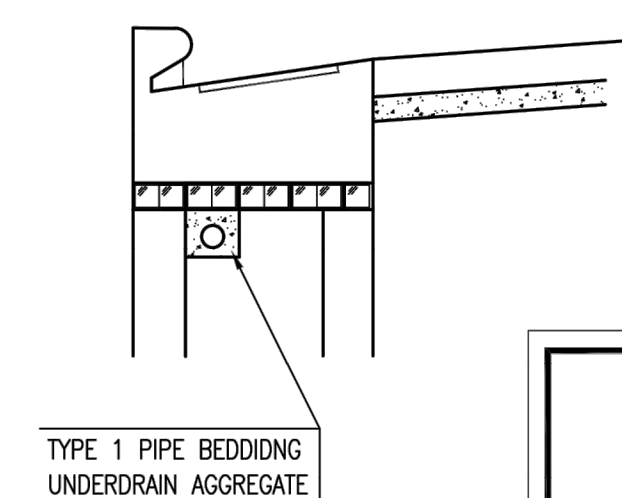
SECTION A-A



SECTION A-A

PAVEMENT UNDERDRAIN DETAIL

BID ITEM TO BE PROVIDED PER 4" PERFORATED UNDERDRAIN PIPE.



SECTION A-A



<b>CURB INLET PAVEMENT UNDERDRAIN DETAIL</b>		
CITY ENGINEER <b>GARY JANZEN, P.E.</b>		
PROJECT NUMBER	OCA NUMBER	DATE
		10/2012
CITY ENGINEER'S OFFICE CITY HALL - SEVENTH FLOOR 455 NORTH MAIN STREET WICHITA, KANSAS 67202-1620 (316) 268-4501		SHEET
		_ of _

Scaled 08-04-2014 2:42:38 PM by B.S.  
 Plot Scale 1:10 08-07-2016 3:27:54 PM by MATTHEW MCCORMICK  
 C:\LANDING\Standards Wichita\SW-111-Pavement Underdrain

DOUGLAS AVE.  
 STREETSCAPE  
 IMPROVEMENTS  
 WICHITA, KS

**LKArchitecture**  
 Architecture • Engineering • Planning • Interior Design • Landscape Architecture

LK Architecture Inc. ©  
 345 RIVERVIEW WICHITA, KS 67203  
 Phone (316) 268-0230 Fax (316) 268-0205

CONTACT: Jeffery A. Best, ASLA  
 PROJECT NUMBER:  
**15749.01**  
 SHEET TITLE:  
**SW-111 STANDARD**

SHEET NUMBER:  
**C27**

**PEC** PROFESSIONAL ENGINEERING CONSULTANTS, P.A.  
 303 SOUTH TOPEKA WICHITA, KS 67202  
 316-262-2691 www.pec1.com