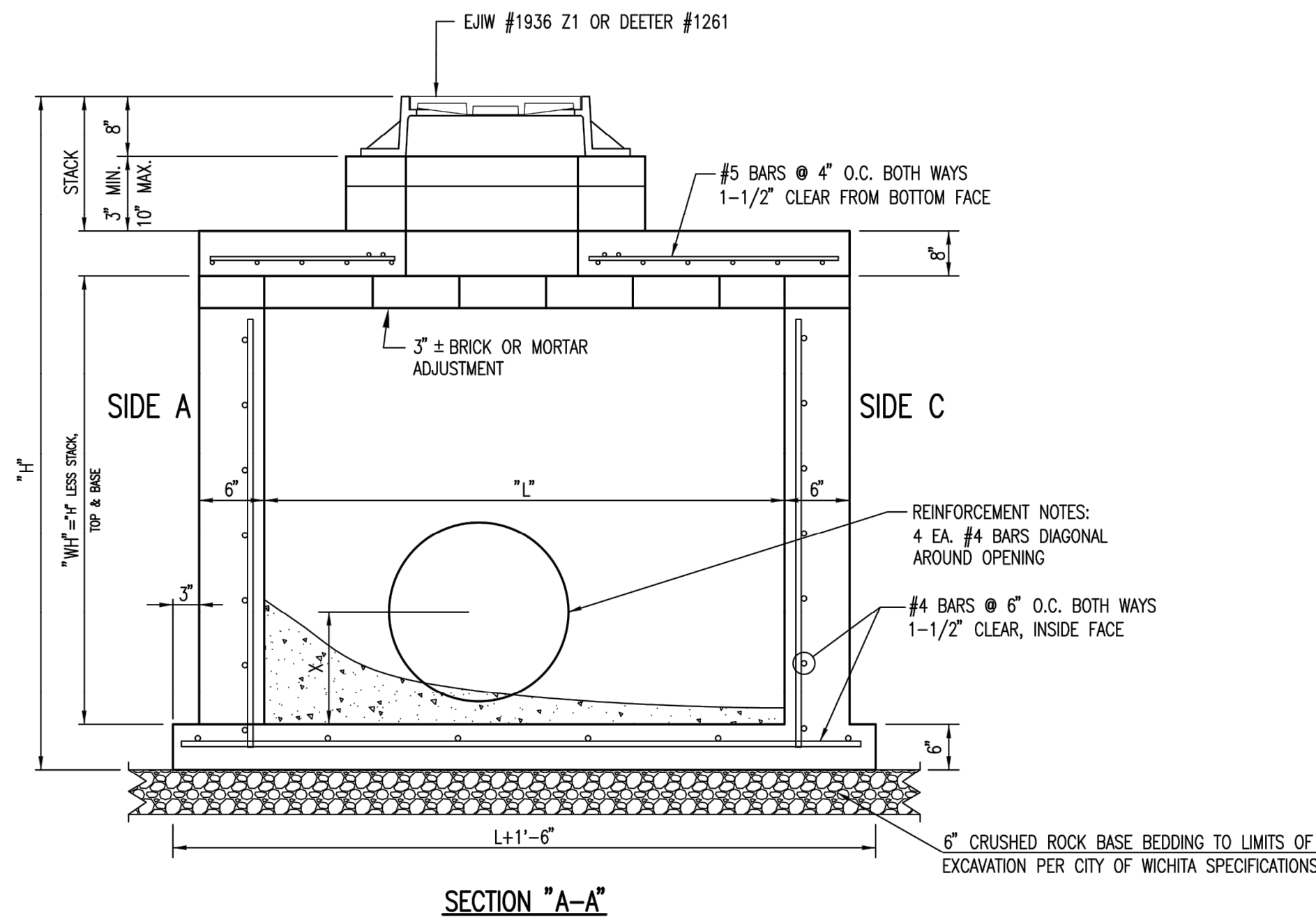


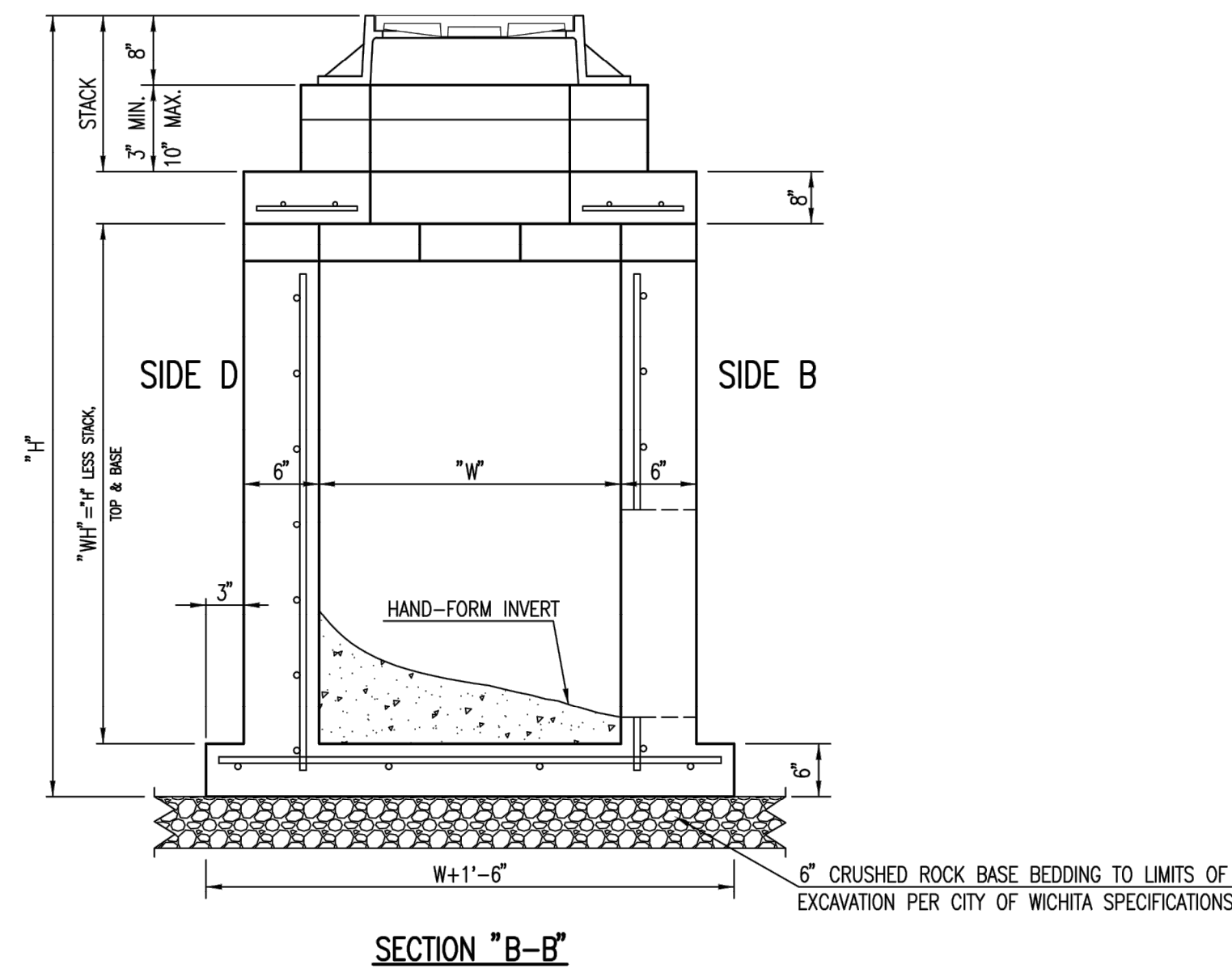
TOP VIEW

GENERAL NOTES

1. GRATE FRAME TO BE INSTALLED ON THIN MORTAR CUSHION TO INSURE FULL SUPPORT ALONG BRICK. CONCRETE USED FOR INLET CONSTRUCTION SHALL CONFORM TO CITY OF WICHITA SPECIFICATIONS FOR CONCRETE PAVEMENT MIX.
2. INLET INVERT SHALL BE SHAPED WITH 8 SACK SAND MIX CONCRETE TO CREATE FLOW CHANNELS AND TO INCREASE HYDRAULIC EFFICIENCY SUCH THAT THE INLET WILL BE SELF CLEANING BETWEEN ALL INLET AND/OR OUTLET PIPES.
3. THE ENDS OF ALL PIPES INSTALLED IN INLETS SHALL BE CUT OFF FLUSH WITH THE INSIDE FACE OF THE INLET WALL.
4. INLET FRAME AND GRATE TO BE DEETER #1261, EJM #1936-Z1 OR APPROVED EQUAL, SEE SW-303.
5. CONTRACTOR SHALL REMOVE LIFTING HOOKS AFTER INSTALLATION. RECESSES IN MANHOLE WALL SHALL BE GROUTED FLUSH TO THE MANHOLE WALL WITH HYDRAULIC CEMENT AFTER THE MANHOLE IS IN PLACE. LIFTING HOLES THRU THE MANHOLE WALL WILL NOT BE ACCEPTED.



SECTION "A-A"



SECTION "B-B"



REINFORCED CONCRETE MANHOLE (STORM SEWER)		
CITY ENGINEER GARY JANZEN, P.E.		
PROJECT NUMBER	OCA NUMBER	DATE
-	-	-
CITY ENGINEER'S OFFICE CITY HALL - SEVENTH FLOOR 455 NORTH MAIN STREET WICHITA, KANSAS 67202-1620 (316) 268-4501		SHEET _ of _

REVISED: MARCH 2015

SW-302

Sheet 05-11-2015 10:56:24 AM by PEI
 Plot Scale 1:10 08-02-2016 5:49:59 PM by MATTHEW MCCORMACK
 C:\STANDARD\Standards\Wichita\Storm\Wichita SW-302-Reinf. Conc Manhole

DOUGLAS AVE.
STREETSCAPE
IMPROVEMENTS
WICHITA, KS

LKArchitecture



Architecture • Engineering • Planning • Interior Design • Landscape Architecture

LK Architecture Inc. ©
 345 RIVERVIEW WICHITA, KS 67203
 Phone (316) 268-0230 Fax: (316) 268-0205

CONTACT: Jeffery A. Best, ASLA

PROJECT NUMBER:
15749.01

SHEET TITLE:
SW-302 STANDARD

SHEET NUMBER:
C29