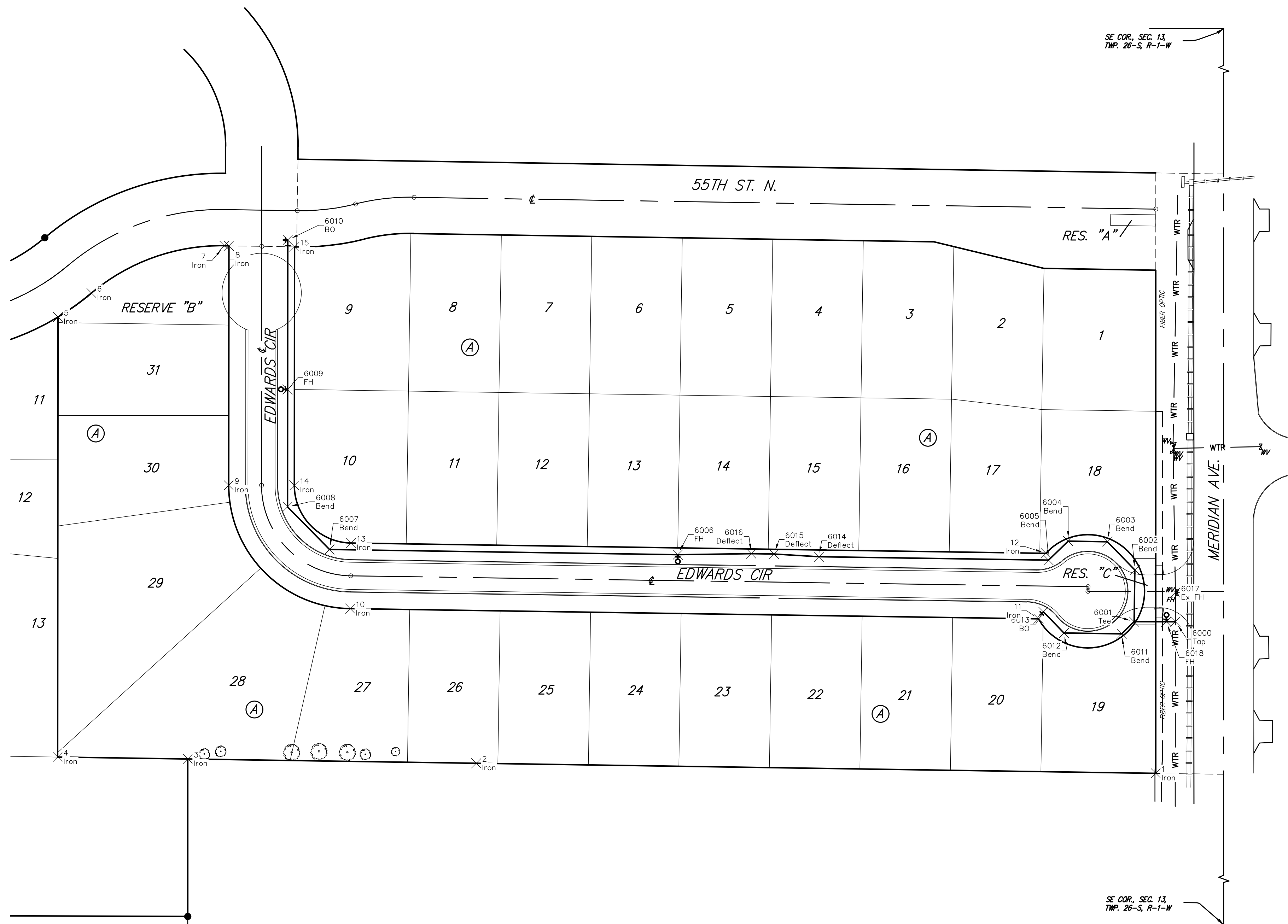
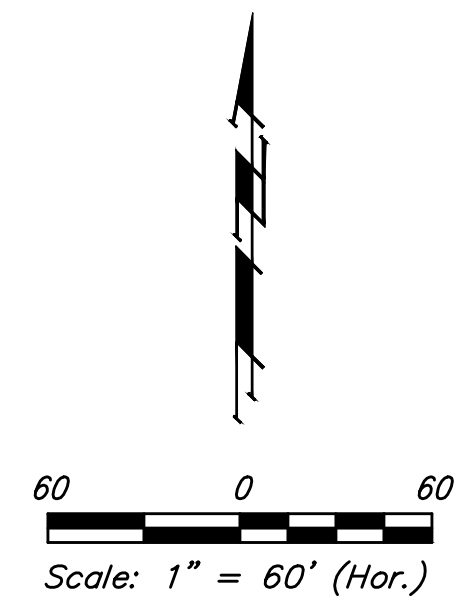


BENCHMARKS:
 BM #1: Chiseled Square, Center of Storm Water Sewer Vault, West Side of Meridian Ave., 145' South and 30.6' East of the Northeast Cor., Lot 1, Block A, Northgate 2nd Addition
 Elev. = 1334.49 NAVD88

BM #2: "X" on South End of Catch Basin, East Side of Meridian Ave., 423' South of 55th St. N. & 30' East of Meridian Ave. centerline
 Elev. = 1332.58 NAVD88

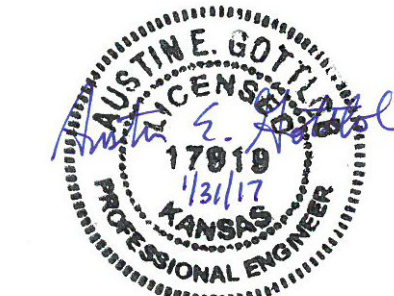


Water

Point #	Northing	Easting	Description
6000	6588.88	4957.31	Tap
6001	6588.90	4920.83	Tee
6002	6634.63	4921.51	Bend
6003	6659.57	4897.29	Bend
6004	6660.08	4862.53	Bend
6005	6643.31	4845.25	Bend
6006	6648.17	4517.51	FH
6007	6652.73	4209.70	Bend
6008	6690.43	4172.58	Bend
6009	6794.29	4172.66	FH
6010	6926.31	4172.77	BO
6011	6578.15	4909.75	Bend
6012	6578.91	4858.79	Bend
6013	6597.62	4840.62	BO
6014	6646.32	4642.35	Deflect
6015	6648.74	4802.38	Deflect
6016	6649.04	4582.38	Deflect
6017	6614.45	4957.32	Ex FH
6018	6588.88	4949.30	FH

Irons

Point #	Northing	Easting	Description
1	6454.89	4940.00	Iron
2	6463.78	4339.42	Iron
3	6467.56	4084.40	Iron
4	6469.26	3969.41	Iron
5	6858.21	3969.71	Iron
6	6879.39	3999.31	Iron
7	6921.20	4116.79	Iron
8	6921.14	4120.76	Iron
9	6709.52	4120.60	Iron
10	6600.45	4227.98	Iron
11	6591.44	4836.30	Iron
12	6649.35	4842.93	Iron
13	6658.44	4228.84	Iron
14	6709.48	4178.60	Iron
15	6920.22	4178.76	Iron



	Northgate 2nd Addition COORDINATE SHEET	
	Water Distribution System	
<small>Baughman Company, P.A. 315 Ellis St. Wichita, KS 67211 P 316-262-7271 F 316-262-0149 ENGINEERING SURVEYING PLANNING LANDSCAPE ARCHITECTURE</small>		
PROJECT NUMBER 448-90749	DESIGN AEG	DRAWN DJL
REVISIONS:	APPROVED Noted	DATE 9/16
		SCALE Noted
		13 OF 14