

CITY STANDARD BENCH MARK: 41 FT. WEST OF THE CENTER OF GOLD ST. (north)  
AND 24 FT NORTH OF THE CENTER OF PAVEMENT ON 35TH ST. S.  
ELEV. = 94.88

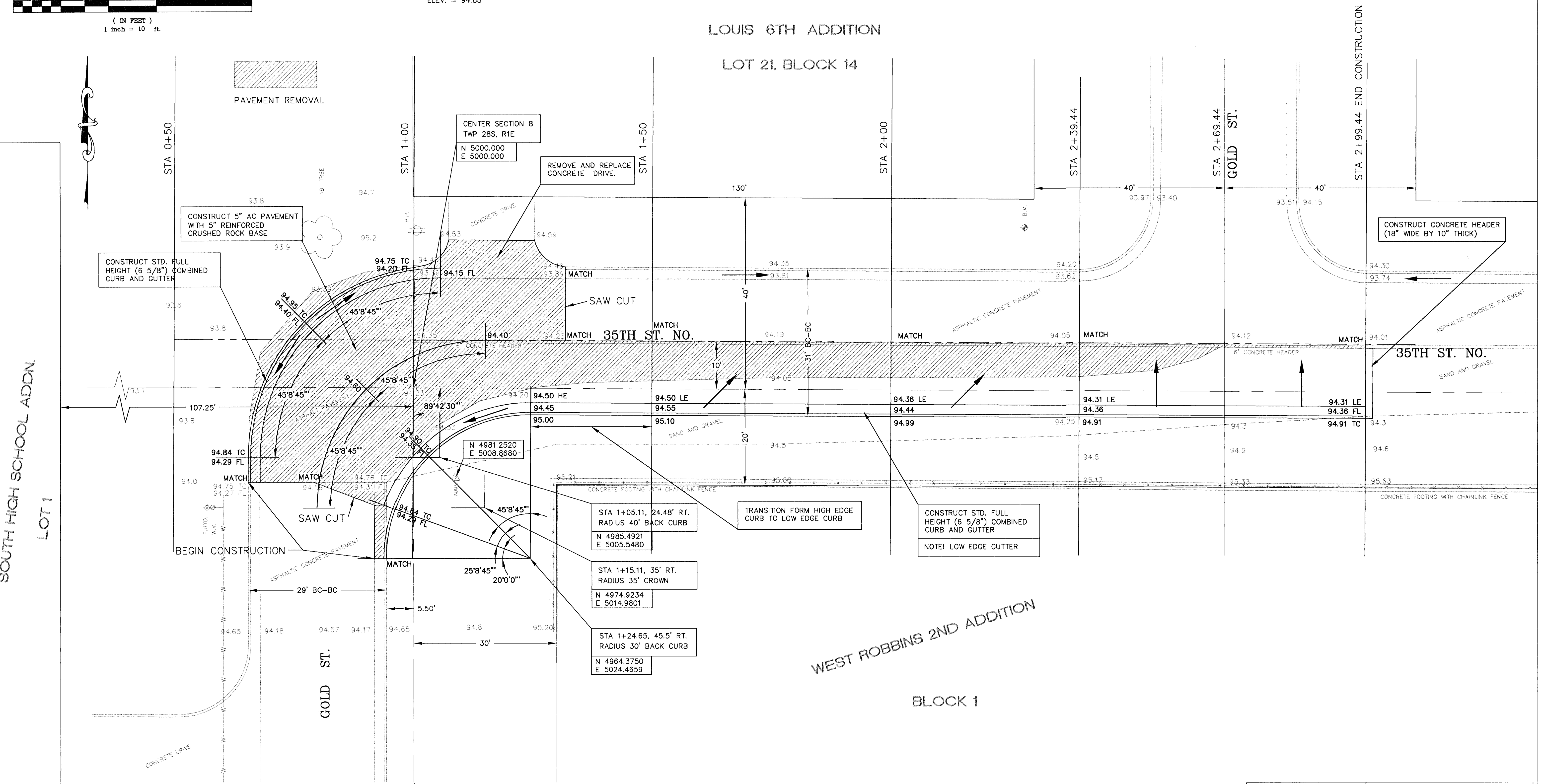
LOUIS 6TH ADDITION

LOT 21, BLOCK 14

SOUTH HIGH SCHOOL ADDN.  
LOT 1

WEST ROBBINS 2ND ADDITION

BLOCK 1



PAVEMENT REMOVAL

CENTER SECTION 8  
TWP 28S, R1E  
N 5000.000  
E 5000.000

REMOVE AND REPLACE  
CONCRETE DRIVE.

CONSTRUCT 5" AC PAVEMENT  
WITH 5" REINFORCED  
CRUSHED ROCK BASE

CONSTRUCT STD. FULL  
HEIGHT (6 5/8") COMBINED  
CURB AND GUTTER

CONSTRUCT CONCRETE HEADER  
(18" WIDE BY 10" THICK)

STA 1+05.11, 24.48' RT.  
RADIUS 40' BACK CURB  
N 4985.4921  
E 5005.5480

STA 1+15.11, 35' RT.  
RADIUS 35' CROWN  
N 4974.9234  
E 5014.9801

STA 1+24.65, 45.5' RT.  
RADIUS 30' BACK CURB  
N 4964.3750  
E 5024.4659

S 1/4 CORNER SECTION 8  
TWP 28S, R1E  
N 2374.2100  
E 5000.0000

			35TH STREET SOUTH W.L. GOLD ST. (SOUTH) TO E.L. GOLD ST. (NORTH)		
			CITY ENGINEER NEIL D. CABLE, P.E.		
PROJECT NUMBER 472-83661	OCA NUMBER 765762	DATE 06/03	DESIGN KALLMAN		
CITY ENGINEER'S OFFICE CITY HALL - SEVENTH FLOOR 455 NORTH MAIN STREET WICHITA, KANSAS 67202-1620 (316) 268-4501 (316) 268-4114 FAX			DRAWN LOOMIS		
			SHEET 3 OF 6		