

BENCHMARKS:

BM #1: "□" Cut in top of curb, east return of SE corner of Lotus & Parkridge.
Elev. = 145.99 (City Datum)

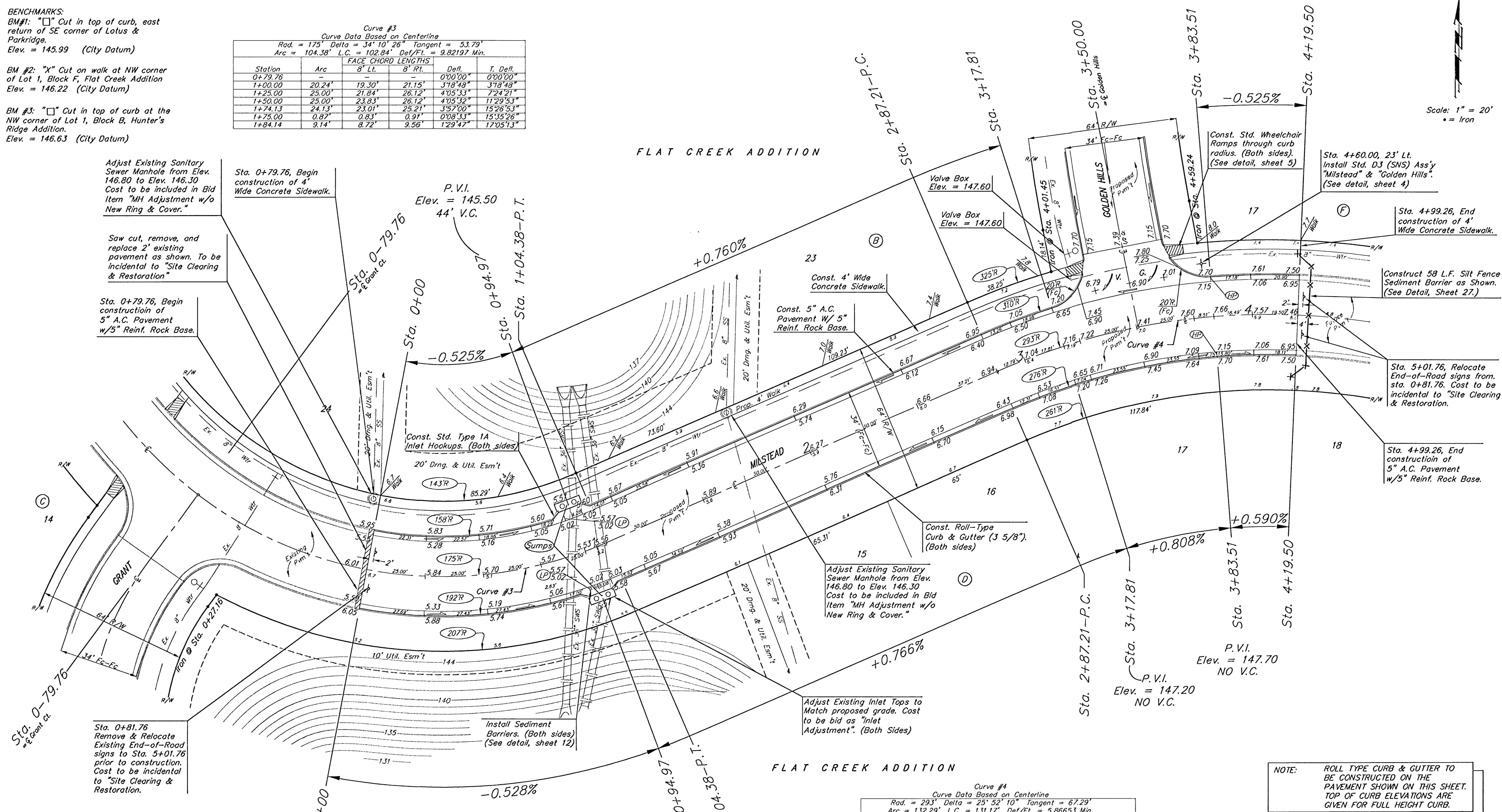
BM #2: "X" Cut on walk at NW corner of Lot 1, Block F, Flat Creek Addition
Elev. = 146.22 (City Datum)

BM #3: "□" Cut in top of curb at the NW corner of Lot 1, Block B, Hunter's Ridge Addition.
Elev. = 146.63 (City Datum)

Curve #3
Curve Data Based on Centerline
Rad. = 175' Delta = 34° 10' 26" Tangent = 53.79'
Arc = 104.38' L.C. = 102.84' Def/Ft. = 9.82197 Min.

Station	Arc	FACE CHORD LENGTHS		Defl.	T. Defl.
		8' Lt.	8' Rt.		
0+79.76	-	-	-	0°00'00"	0°00'00"
1+00.00	20.24'	19.30'	21.15'	3°18'48"	3°18'48"
1+25.00	25.00'	21.84'	26.12'	4°05'33"	7°24'21"
1+50.00	25.00'	23.83'	26.12'	4°05'32"	11°29'53"
1+74.13	24.13'	23.01'	25.21'	3°57'00"	15°26'53"
1+75.00	0.87'	0.83'	0.91'	0°08'33"	15°35'26"
1+84.14	9.14'	8.72'	9.56'	1°29'47"	17°05'13"

FLAT CREEK ADDITION



Scale: 1" = 20'
• = Iron

FLAT CREEK ADDITION

Curve #4
Curve Data Based on Centerline
Rad. = 293' Delta = 25° 52' 10" Tangent = 67.29'
Arc = 132.29' L.C. = 131.17' Def/Ft. = 5.86653 Min.

Station	Arc	FACE CHORD LENGTHS		Defl.	T. Defl.
		8' Lt.	8' Rt.		
3+66.97	-	-	-	0°00'00"	0°00'00"
3+75.00	8.03'	8.71'	7.34'	0°47'06"	0°47'06"
4+00.00	25.00'	27.13'	22.86'	2°26'40"	3°13'46"
4+25.00	25.00'	27.13'	22.86'	2°26'40"	5°40'26"
4+50.00	25.00'	27.13'	22.86'	2°26'40"	8°07'06"
4+75.00	25.00'	27.13'	22.86'	2°26'40"	10°33'45"
4+99.26	24.26'	26.32'	22.19'	2°22'20"	12°56'05"

NOTE: ROLL TYPE CURB & GUTTER TO BE CONSTRUCTED ON THE PAVEMENT SHOWN ON THIS SHEET. TOP OF CURB ELEVATIONS ARE GIVEN FOR FULL HEIGHT CURB.

FLAT CREEK ADDITION - PHASE II
MILSTEAD
Sta 0+00 to Sta. 4+19.50

BAUGHMAN COMPANY P.A.
ENGINEERING, SURVEYING, & PLANNING
316-262-7271 • 315 ELLIS • WICHITA, KANSAS 67211

PROJECT NUMBER: 472-83384
SHEET 8 OF 43

DESIGN: NBW
DRAWN: ESB/GNX
APPROVED: [Signature]
DATE: 8/21/02
SCALE: NOTED