

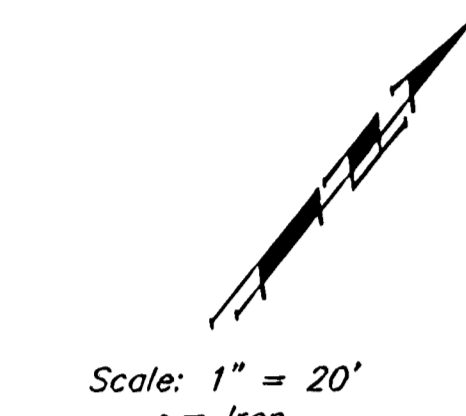
BENCHMARKS:
 BM #1: "□" Cut in top of curb, east return of SE corner of Lotus & Parkridge.
 Elev. = 145.99 (City Datum)

BM #2: "X" Cut on walk at NW corner of Lot 1, Block F, Flat Creek Addition
 Elev. = 146.22 (City Datum)

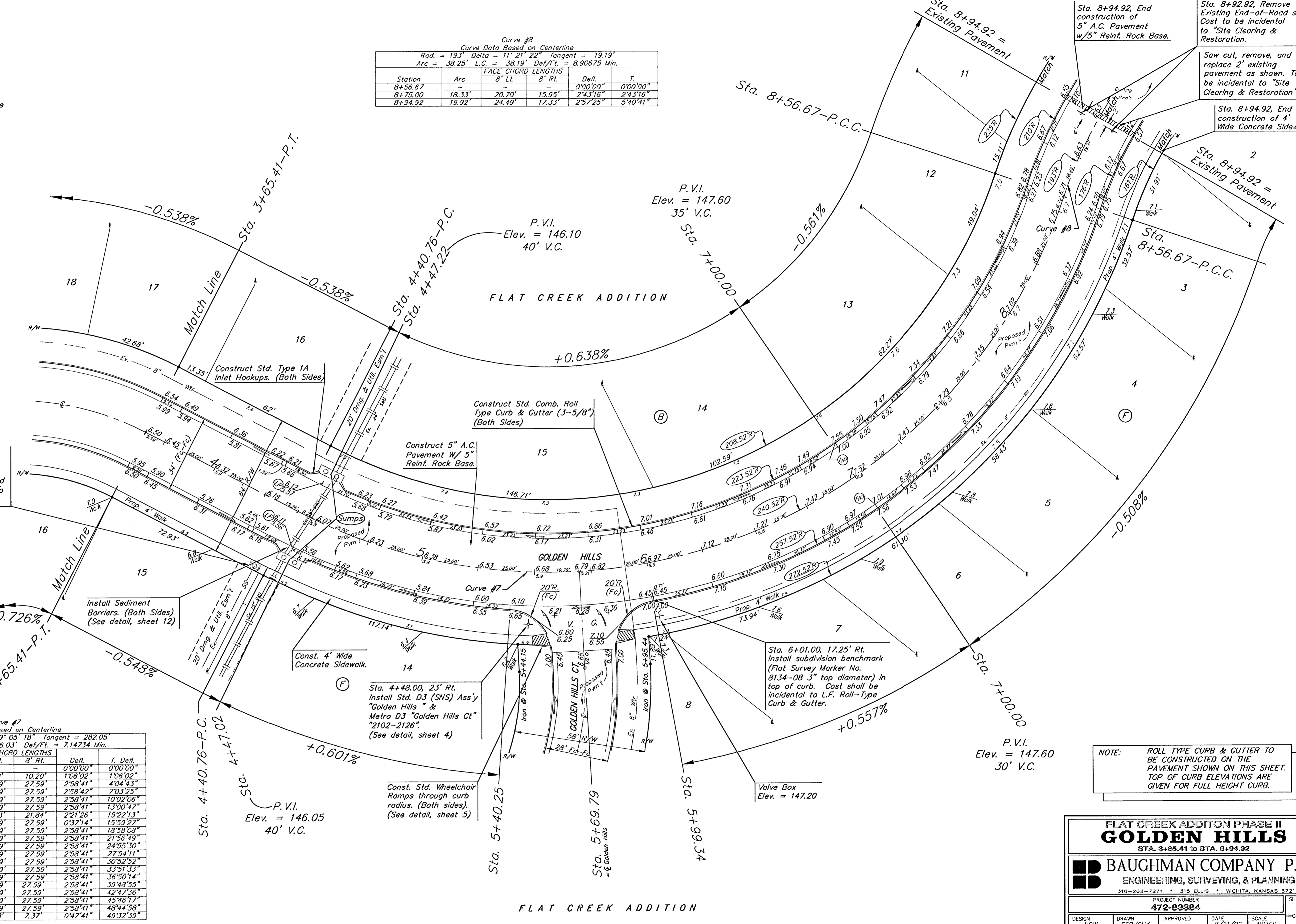
BM #3: "□" Cut in top of curb at the NW corner of Lot 1, Block B, Hunter's Ridge Addition.
 Elev. = 146.63 (City Datum)

Curve #8
 Curve Data Based on Centerline
 Rad. = 193' Delta = 11° 21' 22" Tangent = 19.19'
 Arc = 38.25' L.C. = 38.19' Del/Ft. = 8.90675 Min.

Station	Arc	FACE CHORD LENGTHS		Defl.	T. Defl.
		8' Lt.	8' Rt.		
8+56.67	-	-	-	0°00'00"	0°00'00"
8+75.00	18.33'	20.70'	15.95'	2°43'16"	2°43'16"
8+94.92	19.92'	24.49'	17.33'	2°57'25"	5°40'41"



Scale: 1" = 20'
 • = Iron



Curve #7
 Curve Data Based on Centerline
 Rad. = 240.52' Delta = 99° 05' 18" Tangent = 282.05'
 Arc = 415.91' L.C. = 366.03' Del/Ft. = 7.14734 Min.

Station	Arc	FACE CHORD LENGTHS		Defl.	T. Defl.
		8' Lt.	8' Rt.		
4+40.76	-	-	-	0°00'00"	0°00'00"
4+50.00	9.24'	8.28'	10.20'	1°06'02"	1°06'02"
4+75.00	25.00'	22.39'	27.59'	2°58'41"	4°04'43"
4+75.00	25.00'	22.39'	27.59'	2°58'41"	7°03'25"
5+00.00	25.00'	22.39'	27.59'	2°58'41"	10°02'06"
5+25.00	25.00'	22.39'	27.59'	2°58'41"	13°00'47"
5+50.00	25.00'	22.39'	27.59'	2°58'41"	15°59'27"
5+75.00	25.00'	22.39'	27.59'	2°58'41"	18°58'08"
6+00.00	25.00'	22.39'	27.59'	2°58'41"	21°56'49"
6+25.00	25.00'	22.39'	27.59'	2°58'41"	24°55'30"
6+50.00	25.00'	22.39'	27.59'	2°58'41"	27°54'11"
6+75.00	25.00'	22.39'	27.59'	2°58'41"	30°52'52"
7+00.00	25.00'	22.39'	27.59'	2°58'41"	33°51'33"
7+25.00	25.00'	22.39'	27.59'	2°58'41"	36°50'14"
7+50.00	25.00'	22.39'	27.59'	2°58'41"	39°48'55"
7+75.00	25.00'	22.39'	27.59'	2°58'41"	42°47'36"
8+00.00	25.00'	22.39'	27.59'	2°58'41"	45°46'17"
8+25.00	25.00'	22.39'	27.59'	2°58'41"	48°44'58"
8+50.00	25.00'	22.39'	27.59'	2°58'41"	49°32'39"
8+56.67	6.67'	5.98'	7.37'	0°47'41"	49°32'39"

NOTE: ROLL TYPE CURB & GUTTER TO BE CONSTRUCTED ON THE PAVEMENT SHOWN ON THIS SHEET. TOP OF CURB ELEVATIONS ARE GIVEN FOR FULL HEIGHT CURB.

FLAT CREEK ADDITION PHASE II
GOLDEN HILLS
 STA. 3+65.41 to STA. 8+94.92

BAUGHMAN COMPANY P.A.
 ENGINEERING, SURVEYING, & PLANNING
 316-262-7271 • 315 ELLIS • WICHITA, KANSAS 67211

PROJECT NUMBER
472-63384

DESIGN: NBW DRAWN: ESB/GNX APPROVED: DATE: 8/21/02 SCALE: NOTED

SHEET **10** OF **43**

FLAT CREEK ADDITION