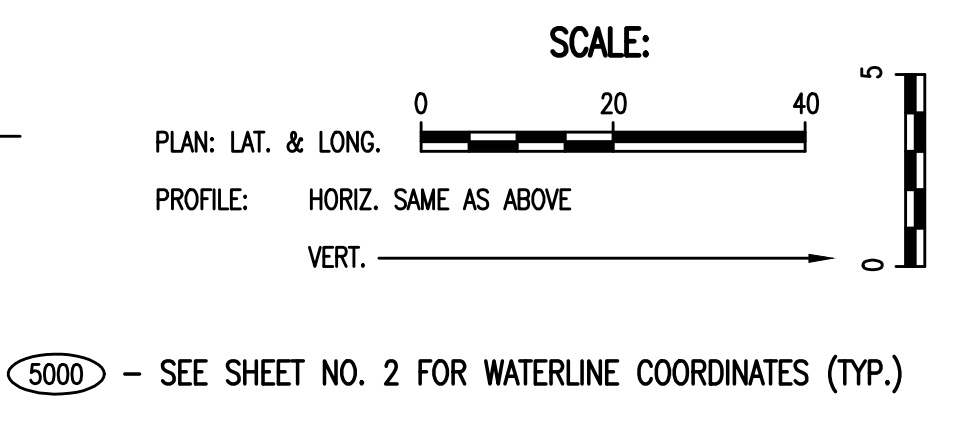
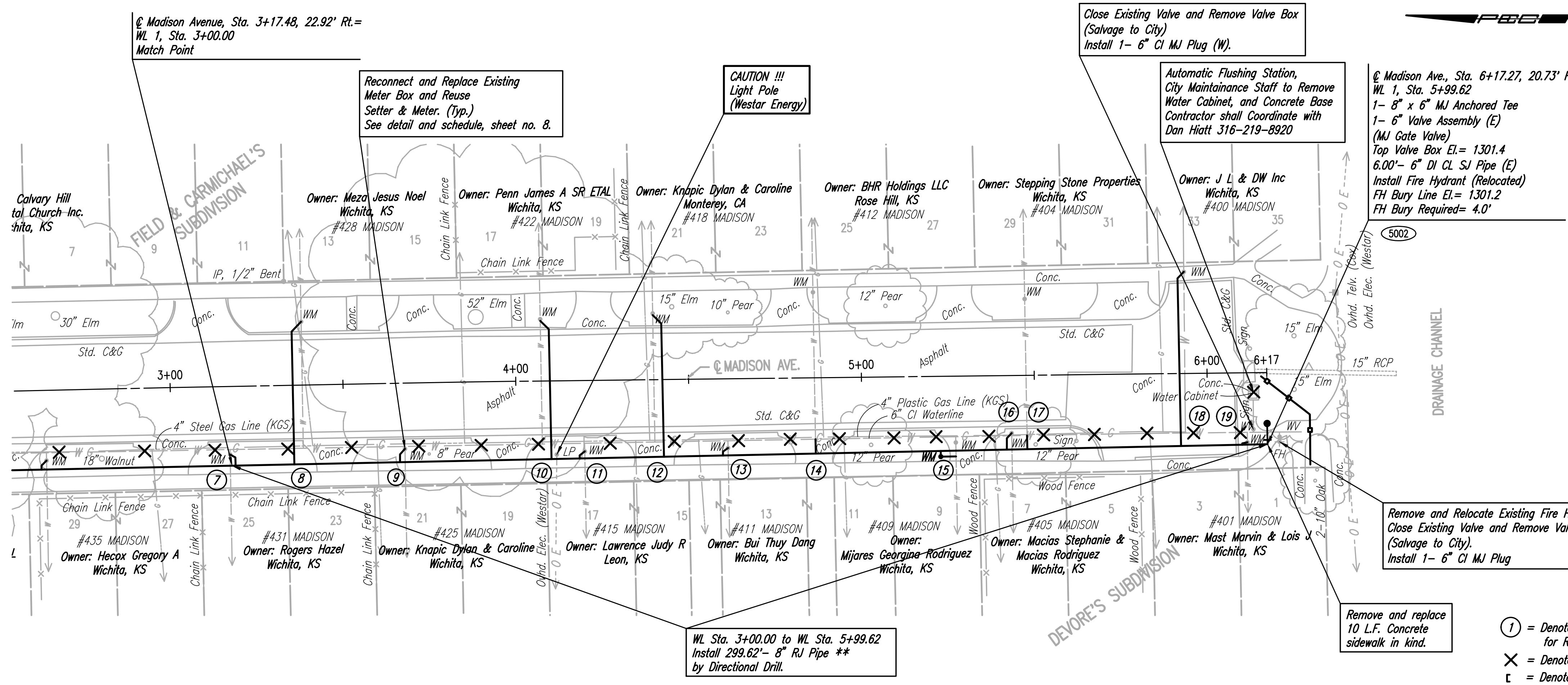


PLAN	CHECKED	DATE
	CHECKED	

PROFILE	CHECKED	DATE
	CHECKED	

Saved: 02-01-2017 11:24:06 PM by CSI
 Plot Scale: 1" = 20' - 02-02-2017 9:51:23 AM by CSI
 U:\Wichita-Civil\2016\60312\004\Drawings\160312-004-004 WATERLINE NO. 1



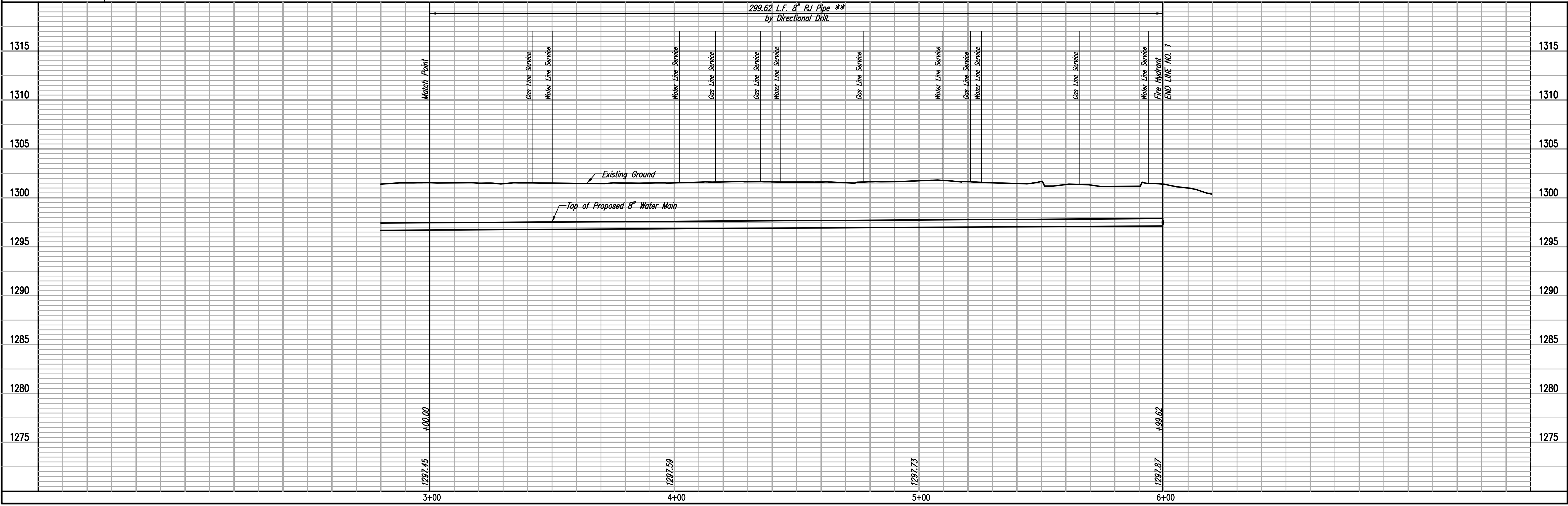
5000 - SEE SHEET NO. 2 FOR WATERLINE COORDINATES (TYP.)

** RESTRAINED JOINT PIPE SHALL BE CERTA-LOK, FUSIBLE PVC OR AN APPROVED EQUAL AS MANUFACTURED IN ACCORDANCE WITH CITY SPECIFICATIONS. PIPE SHALL BE INSTALLED PER THE MANUFACTURERS SPECIFICATIONS.



- ① = Denotes Water Service Line, See sheet 8 for Reconnection Detail and Schedule.
- X = Denotes Waterline to be abandoned in place.
- = Denotes Cap/Plug by the contractor.
- = Silt Fence Barrier

Unless noted otherwise, elevations shown are top of pipe



WATERLINE REPLACEMENT IN MADISON AVENUE FROM CENTRAL TO 3RD

WATERLINE NO. 1

Designed By: JAC, SAD
 Drawn By: CSI, KTD

Job No. 35-160312-004-042
 Date November 2016

PROFESSIONAL ENGINEERING CONSULTANTS P.A.
 303 SOUTH TOPEKA WICHITA, KS 67202
 316-262-2691 www.pec.com

GARY JANZEN, P.E. - CITY ENGINEER
 CITY OF WICHITA PROJECT NO. 448-90765

Sheet 4 of 13