

SHELLY'S ORCHARD ADDITION

WICHITA, SEDGWICK COUNTY, KANSAS

State of Kansas) SS
Sedgwick County)

We, Savoy, Ruggles & Bohm, P.A., Surveyors in aforesaid county and state do hereby certify that, under the supervision of the undersigned, we have surveyed and platted "SHELLY'S ORCHARD ADDITION", Wichita, Sedgwick County, Kansas and that the accompanying plat is a true and correct exhibit of the property surveyed, described as follows:

That part of the NW1/4 of the SW1/4 of Sec 32, Twp. 27-S, R-1-W of the 6th P.M., Sedgwick County, Kansas, except the north 115 feet thereof.

All Public easements and dedications being vacated by virtue of K.S.A. 12-512(b).

Savoy, Ruggles & Bohm, P.A.

Date _____

Mark A. Savoy RLS #788
Surveyor

Know all men by these presents that we, the undersigned have caused the land described in the surveyor's certificate to be platted into Lots, Blocks, Reserves and Streets to be known as "SHELLY'S ORCHARD ADDITION", Wichita, Sedgwick County Kansas. The utility easements are hereby granted as indicated for the construction and maintenance of all public utilities. The Streets are hereby dedicated to and for the use of the public. Access Controls are hereby granted to the City of Wichita (as indicated on the face of the plat), with the location of openings to be approved by the City Engineer. Minimum building pad elevation for lowest opening to a structure is as shown on the face of the plat.

Rick Thompson Construction Inc.

Rick Thompson
President

State of Kansas) SS
Sedgwick County)

The foregoing instrument acknowledged before me, this _____ day of _____, 1998, by Rick Thompson, President, Rick Thompson Construction Inc., on behalf of the corporation.

Notary Public

My App't. Exp. _____

This plat of "SHELLY'S ORCHARD ADDITION", Wichita, Sedgwick County, Kansas, has been submitted to and approved by the Wichita-Sedgwick County Metropolitan Area Planning Commission, Wichita, Kansas. Dated this _____ day of _____, 1997.

Wichita-Sedgwick County Metropolitan Area Planning Commission

John C. Frye
Chairman

Marvin S. Krout
Secretary

Bob Knight
Mayor

Pat Burnett
City Clerk

This plat approved and all dedications shown hereon, accepted by the City Council of the City of Wichita, Kansas, this _____ day of _____, 1998.

James Alford
County Clerk

Entered on transfer record this _____ day of _____, 1998.

State of Kansas) SS
Sedgwick County)

This is to certify that this plat has been filed for record in the office of the Register of Deeds, this _____ day of _____, 1998, at _____ o'clock _____ M. and is duly recorded.

Larry Consolver
Register of Deeds

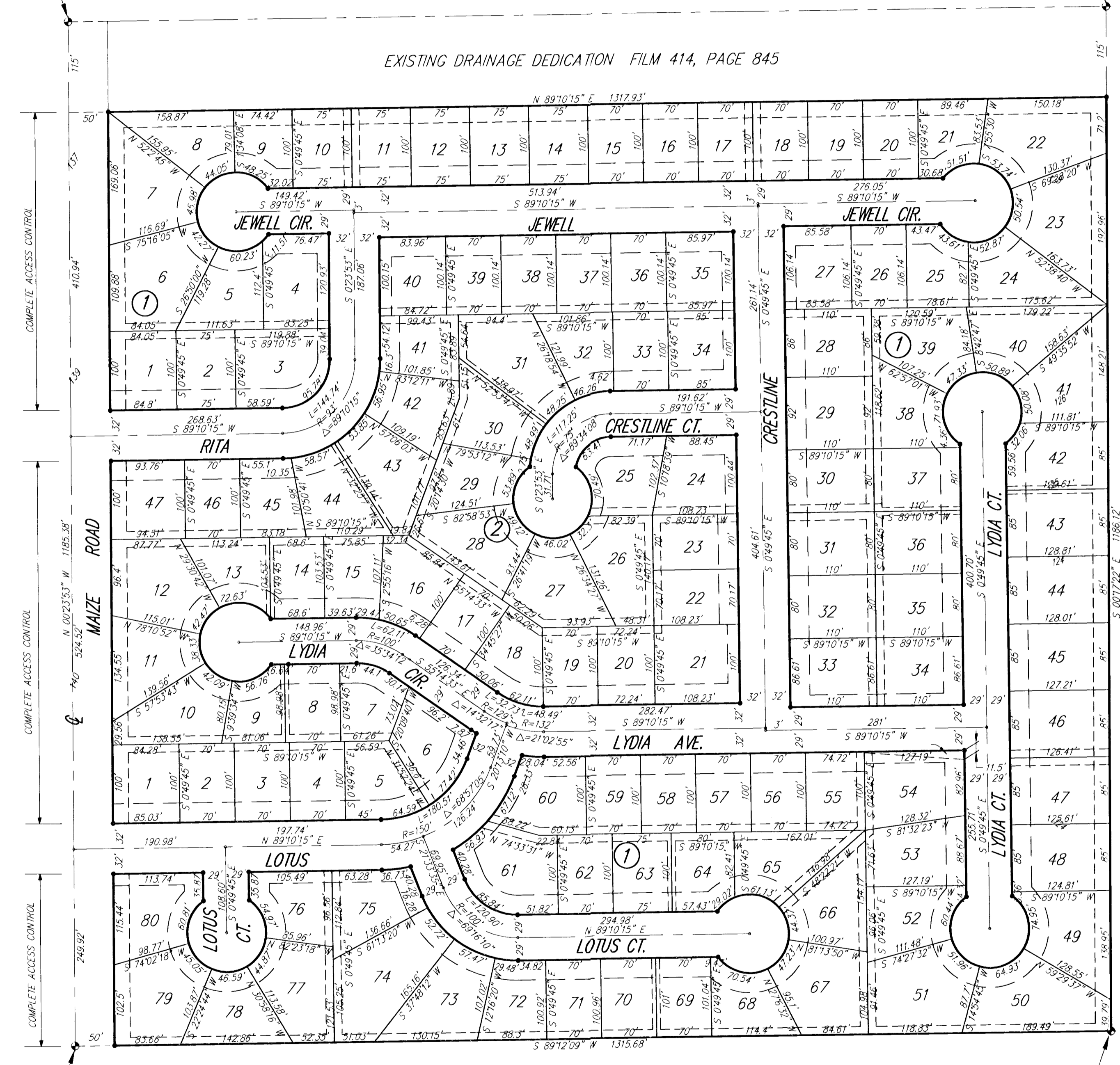
Michael D. Hurtt
Deputy

N.W. COR NW1/4, SW1/4
SEC. 32, TWP. 27-S, R-1-W

N.E. COR NW1/4, SW1/4
SEC. 32, TWP. 27-S, R-1-W

S.W. COR NW1/4, SW1/4
SEC. 32, TWP. 27-S, R-1-W

S.E. COR NW1/4, SW1/4
SEC. 32, TWP. 27-S, R-1-W



MINIMUM BUILDING PAD ELEVATION FOR LOWEST OPENING TO A STRUCTURE			
LOT	BLOCK	ELEVATION	
		CITY DATUM	N.G.V.D.
8, 9, 10	1	133.5	1320.9
11, 12, 13	1	132.0	1319.4
14, 15, 16	1	130.5	1317.9
17, 18, 19	1	130.0	1317.4
20, 21, 22	1	129.5	1316.9

BENCHMARK:
City of Wichita Benchmark disc @ Maize Road and May Street
31.5' S. and 38' E. of centerline bath.
Elev.=137.87 (City Datum)
Elev.=1325.07 (NGVD)

1" = 100'
• = 1/2" REBAR W/SRB CAP
S.B. = BUILDING SETBACK
C.A.C. = COMPLETE ACCESS CONTROL