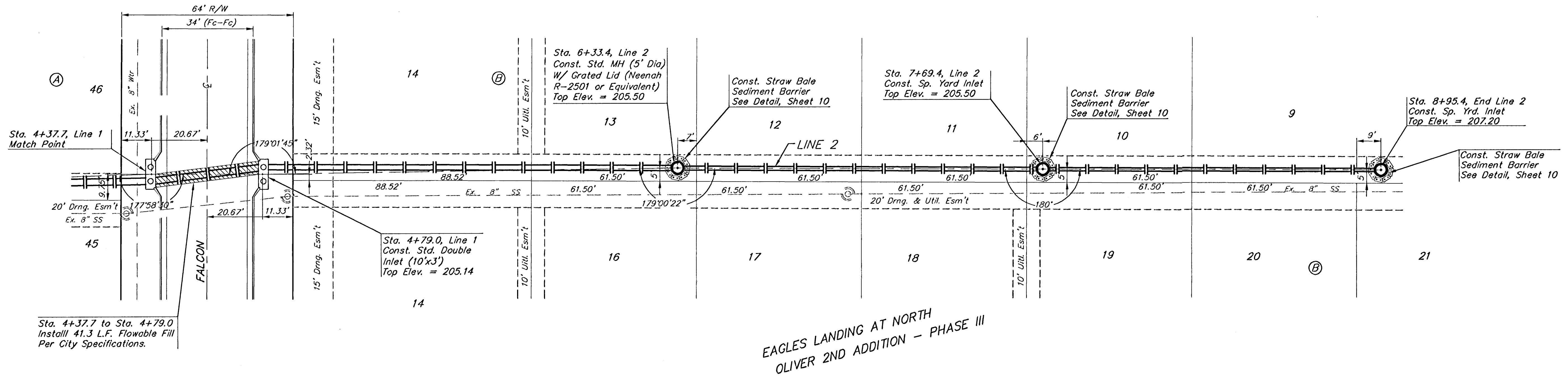
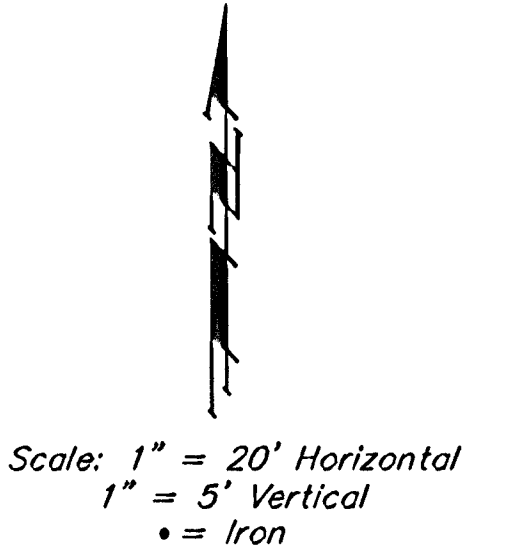


BENCHMARKS:
 Oliver and 45th St. N. - Top of Brass Plate on SW Corner of R.C.B.C. East of Intersection.
 ELEV. = 1398.88 NGVD
 (211.48 City Datum)

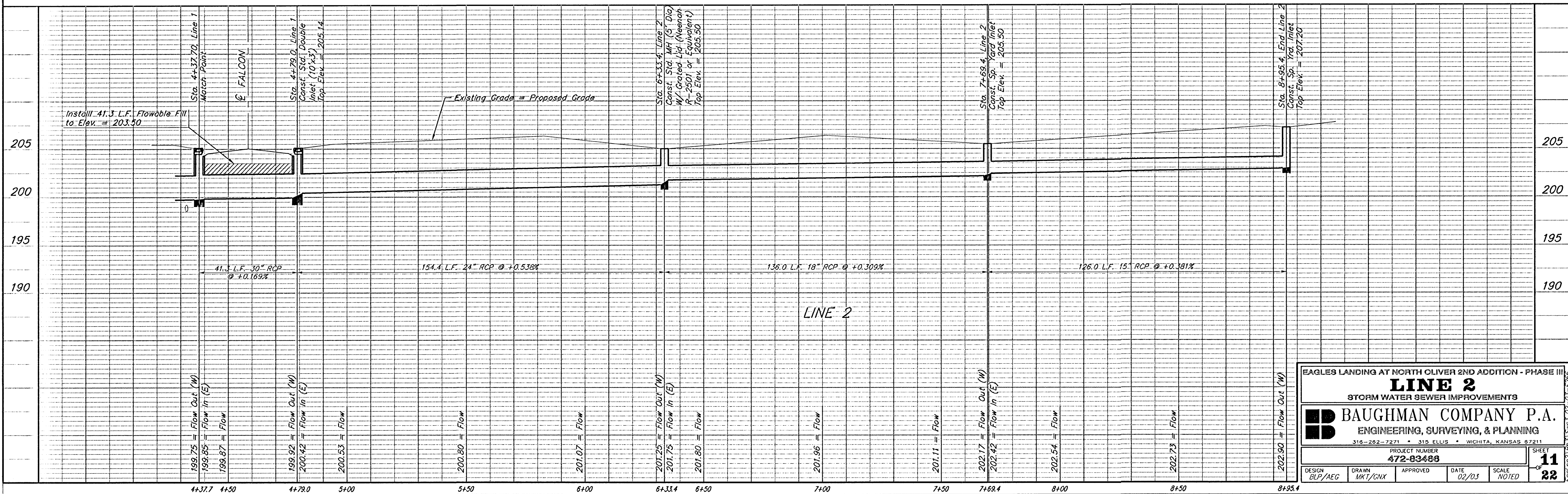
60d Nail In H.L.P., 33' S. of the NW Corner of Gov't. Lot 1 in the NE1/4 of Sec. 26, TWP. 26-S, R-1-E of the 6th P.M. Elev. = 1377.19 NGVD
 (189.79 City Datum)

EAGLES LANDING AT NORTH
 OLIVER 2ND ADDITION - PHASE III



Sta. 4+37.7 to Sta. 4+79.0
 Install 41.3 L.F. Flowable Fill
 Per City Specifications.

EAGLES LANDING AT NORTH
 OLIVER 2ND ADDITION - PHASE III



EAGLES LANDING AT NORTH OLIVER 2ND ADDITION - PHASE III
LINE 2
 STORM WATER SEWER IMPROVEMENTS

BAUGHMAN COMPANY P.A.
 ENGINEERING, SURVEYING, & PLANNING
 316-292-7271 • 315 ELLIS • WICHITA, KANSAS 67211

PROJECT NUMBER: 472-03486
 SHEET: 11 OF 22

DESIGN: BLF/AEG | DRAWN: MKJ/GNX | APPROVED: [Signature] | DATE: 02/03 | SCALE: NOTED