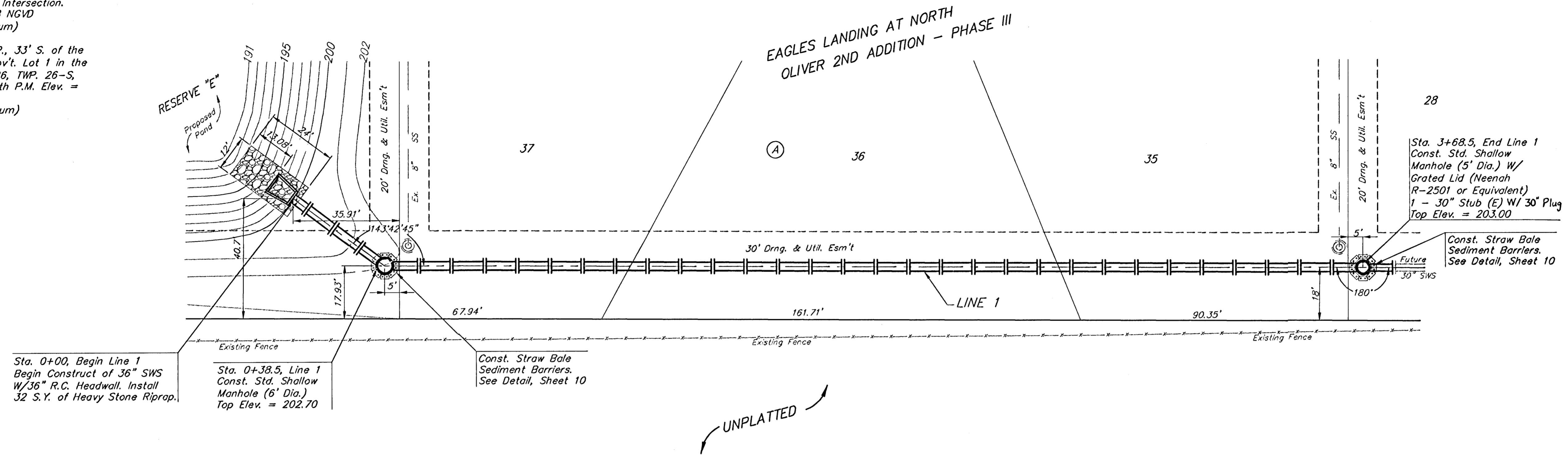


BENCHMARKS:
 Oliver and 45th St. N. - Top of
 Brass Plate on SW Corner of
 R.C.B.C. East of Intersection.
 ELEV. = 1398.88 NGVD
 (211.48 City Datum)

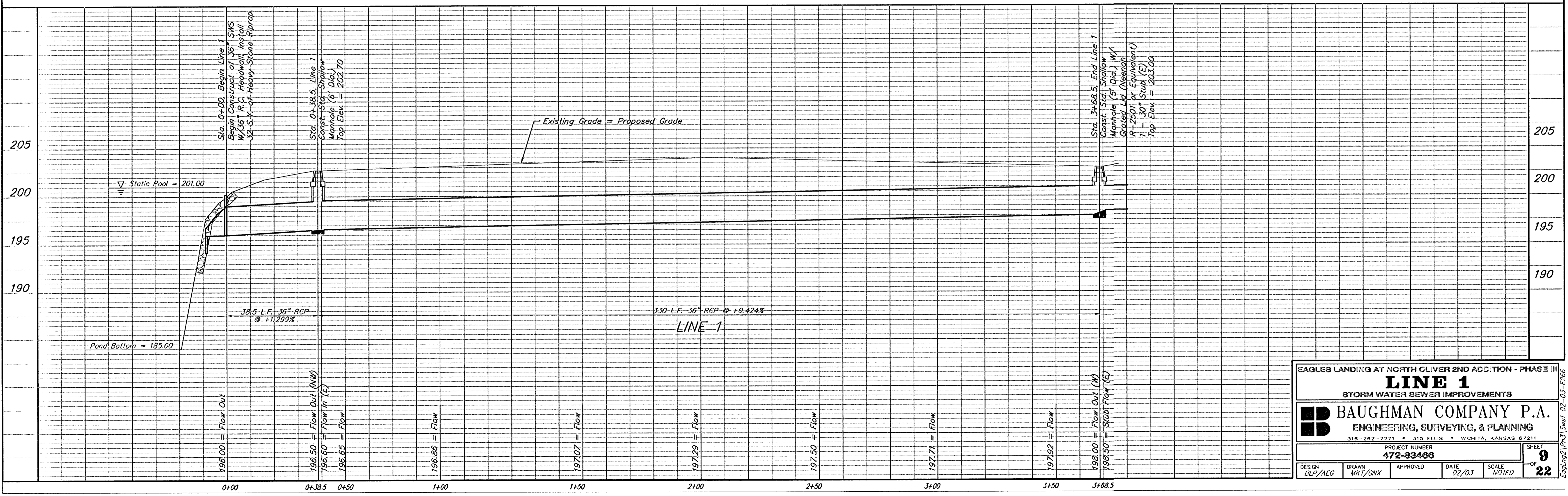
60d Nail In H.L.P., 33' S. of the
 NW Corner of Gov't. Lot 1 in the
 NE 1/4 of Sec. 26, TWP. 26-S,
 R-1-E of the 6th P.M. Elev. =
 1377.19 NGVD
 (189.79 City Datum)



Scale: 1" = 20' Horizontal
 1" = 5' Vertical
 • = Iron

Cost of Plug Shall be
 incidental to 30" Stub

UNPLATTED



EAGLES LANDING AT NORTH OLIVER 2ND ADDITION - PHASE III			
LINE 1			
STORM WATER SEWER IMPROVEMENTS			
BAUGHMAN COMPANY P.A.			
ENGINEERING, SURVEYING, & PLANNING			
316-262-7271 • 315 ELLIS • WICHITA, KANSAS 67211			
PROJECT NUMBER		SHEET	
472-63486		9	
DESIGN	DRAWN	APPROVED	DATE
BLP/AEG	MKT/CNX		02/03
SCALE		NOTED	

Eagles2 (P13) SWS1 02-03-E266