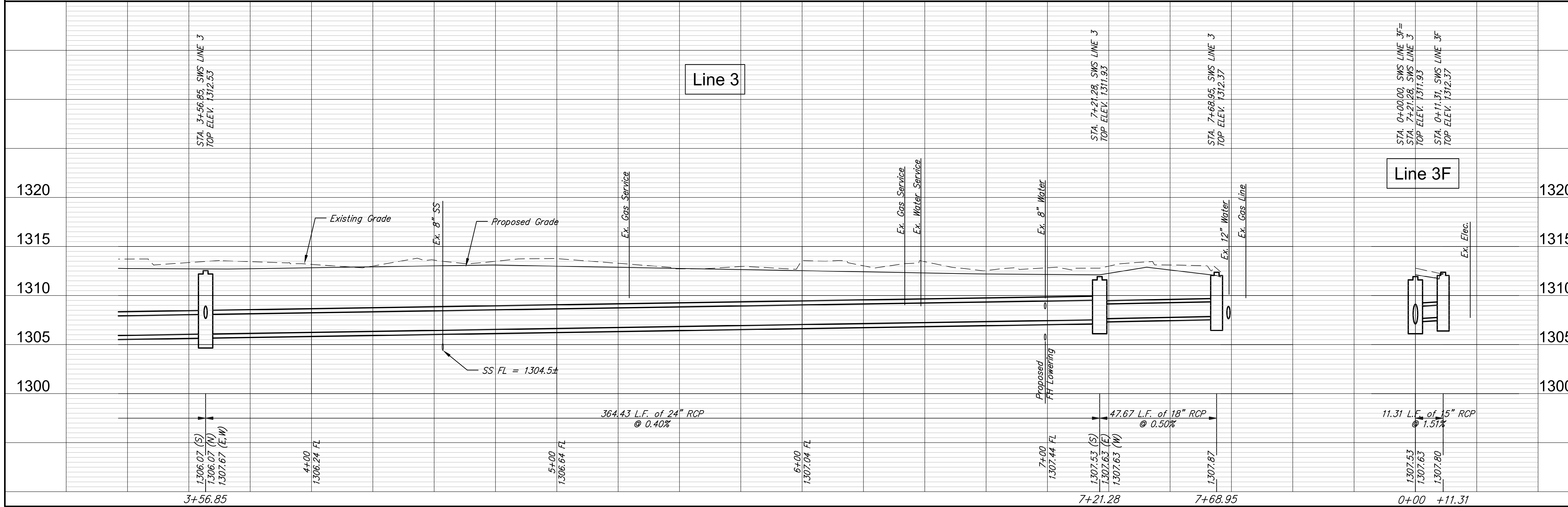


ALL STORM SEWER ON THIS PROJECT UNDER PAVEMENT OR CURB SHALL BE SAND BACKFILLED, JETTED AND VIBRATED.



RUGGLES & BOHM
PROFESSIONAL ENGINEERS & ARCHITECTS
INCORPORATED

PROJECT NUMBER: 472-84914
DESIGN: KWL
DRAWING FILE: DRAWING BASE {SWS 3}
ENGINEERING BASE {SWS 3}

REVIEW: ..
DATE: Oct. 23, 2014

AMIDON IMPROVEMENTS
SWS LINE 3
WICHITA, KANSAS

RB JOB: 3647T
SHEET: 28 OF 133