

BENCHMARKS:
 Oliver and 45th St. N. - Top of Brass Plate on SW Corner of R.C.B.C. East of Intersection. ELEV. = 1398.88 NGVD (211.48 City Datum)

60d Nail in H.L.P., 33' S. of the NW Corner of Gov't. Lot 1 in the NE1/4 of Sec. 26, T1P. 26-S, R-1-E of the 6th P.M. Elev. = 1377.19 NGVD (189.79 City Datum)

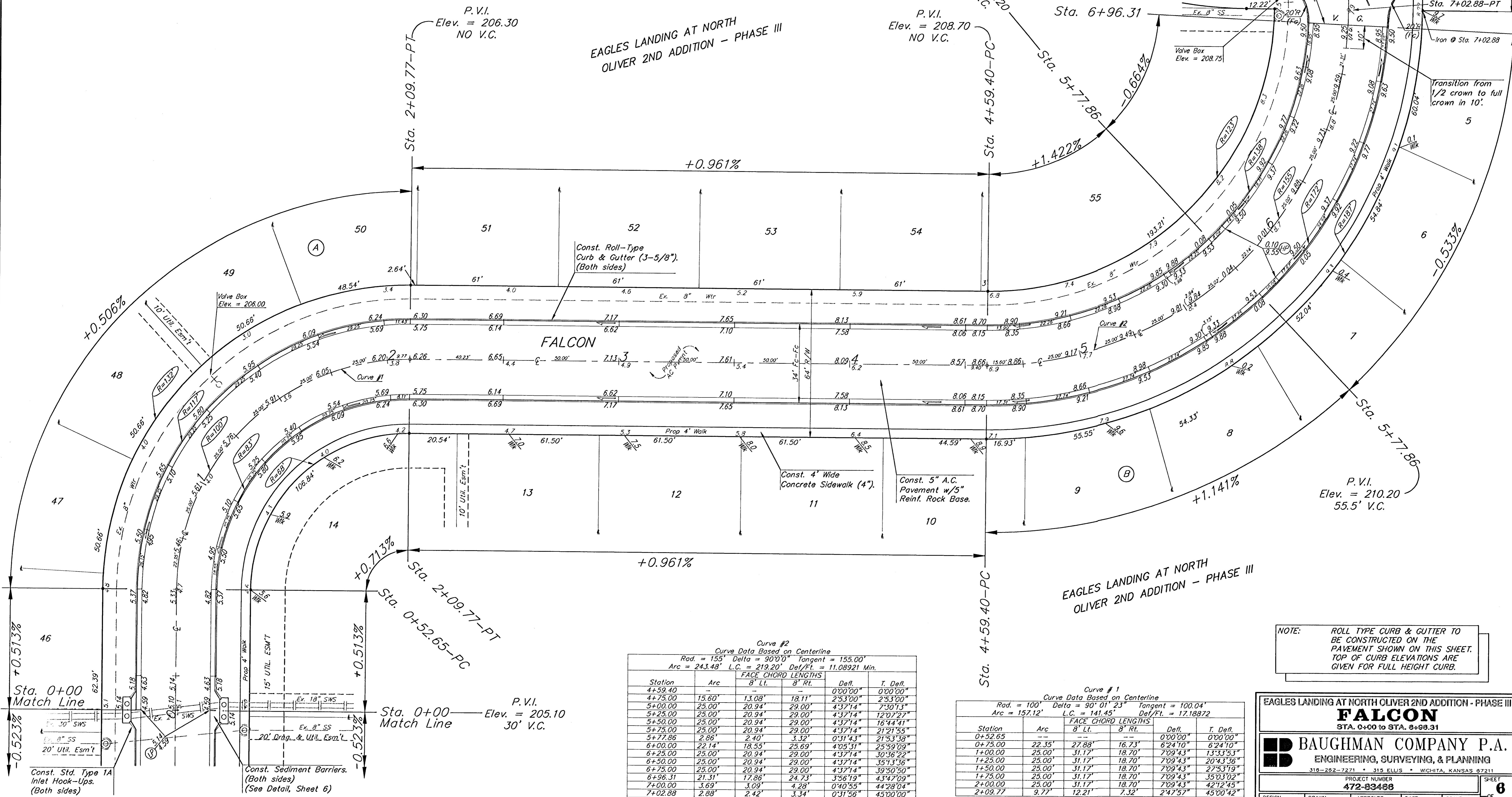
Contractor to Coordinate Construction of Intersection of Willow Point and Falcon with Adjacent Paving Project.

SCALE: 1" = 20'
 • = Iron

Sta. 7+34.88 = Willow Point
 Sta. 6+96.31, End construction of 5" A.C. Pmnt. w/5" Reinf. Rock Base and 4' Sidewalk.

EAGLES LANDING AT NORTH OLIVER 2ND ADDITION - PHASE III

EAGLES LANDING AT NORTH OLIVER 2ND ADDITION - PHASE III



Curve #2
 Curve Data Based on Centerline
 Rad. = 155', Delta = 90°01'23" Tangent = 155.00'
 Arc = 243.48' L.C. = 219.20' Def/Ft. = 11.08921 Min.

Station	Arc	FACE CHORD LENGTHS		Defl.	T. Defl.
		8' Lt.	8' Rt.		
4+59.40	15.60'	13.08'	18.11'	0'00"00"	0'00"00"
4+75.00	15.60'	13.08'	18.11'	2'53"00"	2'53"00"
5+00.00	25.00'	20.94'	29.00'	4'37"14"	7'30"13"
5+25.00	25.00'	20.94'	29.00'	4'37"14"	12'07"27"
5+50.00	25.00'	20.94'	29.00'	4'37"14"	16'44"41"
5+75.00	25.00'	20.94'	29.00'	4'37"14"	21'21"55"
5+77.86	2.86'	2.40'	3.32'	0'31"43"	21'53"38"
6+00.00	22.14'	18.55'	25.69'	4'05"31"	25'59"09"
6+25.00	25.00'	20.94'	29.00'	4'37"14"	30'36"22"
6+50.00	25.00'	20.94'	29.00'	4'37"14"	35'13"36"
6+75.00	25.00'	20.94'	29.00'	4'37"14"	39'50"50"
6+96.31	21.31'	17.86'	24.73'	3'56"19"	43'47"09"
7+00.00	3.69'	3.09'	4.28'	0'40"55"	44'28"04"
7+02.88	2.88'	2.42'	3.34'	0'31"56"	45'00"00"

Curve #1
 Curve Data Based on Centerline
 Rad. = 100', Delta = 90°01'23" Tangent = 100.04'
 Arc = 157.12' L.C. = 141.45' Def/Ft. = 17.18872

Station	Arc	FACE CHORD LENGTHS		Defl.	T. Defl.
		8' Lt.	8' Rt.		
0+52.65	—	—	—	0'00"00"	0'00"00"
0+75.00	22.35'	18.73'	25.99'	6'24"10"	6'24"10"
1+00.00	25.00'	20.94'	29.00'	7'09"43"	13'33"53"
1+25.00	25.00'	20.94'	29.00'	7'09"43"	20'43"36"
1+50.00	25.00'	20.94'	29.00'	7'09"43"	27'53"19"
1+75.00	25.00'	20.94'	29.00'	7'09"43"	35'03"02"
2+00.00	25.00'	20.94'	29.00'	7'09"43"	42'12"45"
2+09.77	9.77'	8.12'	11.21'	2'47"57"	45'00"42"

NOTE: ROLL TYPE CURB & GUTTER TO BE CONSTRUCTED ON THE PAVEMENT SHOWN ON THIS SHEET. TOP OF CURB ELEVATIONS ARE GIVEN FOR FULL HEIGHT CURB.

EAGLES LANDING AT NORTH OLIVER 2ND ADDITION - PHASE III
FALCON
 STA. 0+00 to STA. 8+08.31
BAUGHMAN COMPANY P.A.
 ENGINEERING, SURVEYING, & PLANNING
 318-282-7271 • 315 ELLIS • WICHITA, KANSAS 67211
 PROJECT NUMBER: 472-83488
 SHEET 6 OF 22
 DESIGN: BLP/AEG DRAWN: MKT/GNX APPROVED: DATE: 02/03 SCALE: NOTED