

**GENERAL NOTES**

- THE CONTRACTOR SHALL COMPLY WITH ALL APPLICABLE SAFETY REGULATIONS. ALL CONSTRUCTION SHALL BE COMPLETED FOLLOWING CURRENT CITY STANDARD SPECIFICATIONS AND SPECIAL PROVISIONS.
- THE CONTRACTOR WILL BE REQUIRED TO PROVIDE NOTICE TO UTILITY COMPANIES A MINIMUM OF SEVENTY-TWO (72) HOURS PRIOR TO ANY EXCAVATION, AS FOLLOWS:  
 KANSAS ONE-CALL 687-2470  
 THE CONTRACTOR MUST NOTIFY THE FOLLOWING IN CASE OF AN EMERGENCY:  
 AT&T 1-800-246-8464  
 BLACK HILLS ENERGY (GAS) 1-800-694-8999  
 CITY OF WICHITA WATER 1-316-268-4555  
 CITY OF WICHITA SEWER 1-316-268-4073  
 CITY OF WICHITA STORMWATER 1-316-268-4090  
 CITY OF WICHITA TRAFFIC 1-316-268-4034  
 COX COMMUNICATIONS 1-888-249-3530  
 KANSAS GAS SERVICE 1-888-482-4950  
 WESTAR ENERGY 1-800-544-4857
- UTILITY SERVICE LINES, POLES, ETC. ARE TO BE ADJUSTED AS NECESSARY BY OTHERS PRIOR TO CONSTRUCTION UNLESS THE PLANS SPECIFICALLY CALL FOR THEIR ADJUSTMENT BY ITS OWNER DURING CONSTRUCTION. EXISTING UTILITIES AND THEIR LOCATION, AS SHOWN ON THE PLAN, REPRESENT THE BEST INFORMATION OBTAINABLE FOR DESIGN. THE CONTRACTOR WILL BE REQUIRED TO WORK AROUND EXISTING UTILITIES WITHIN THE RIGHT-OF-WAY WHICH DO NOT CONFLICT WITH PROPOSED CONSTRUCTION.
- RUBBLE FROM THE REMOVAL OF MISCELLANEOUS STRUCTURES AND EXCESS EXCAVATION WHICH IS TO BE WASTED SHALL BE DISPOSED OF ON SITES TO BE PROVIDED BY THE CONTRACTOR. THESE SITES SHALL BE APPROVED BY THE ENGINEER AS TO SUITABILITY, APPEARANCE AND SITE LOCATION. LOCATIONS, IN THE OPINION OF THE ENGINEER, THAT WILL LEAVE AN UNSIGHTLY APPEARANCE WILL NOT BE APPROVED. ALL DISPOSAL SITES MUST BE APPROVED BY THE KANSAS DEPARTMENT OF HEALTH AND ENVIRONMENT. MATERIAL EITHER STOCKPILED OR DISPOSED OF IN A FLOOD PLAIN WOULD REQUIRE A KANSAS STATE BOARD OF AGRICULTURE PERMIT. ANY MATERIAL DUMPED IN WATERS OF THE UNITED STATES OR WETLANDS IS SUBJECT TO U.S. CORPS OF ENGINEERS PERMITTING REGULATIONS. ANY MATERIAL BURIED OR STOCKPILED BEYOND APPROVED CONSTRUCTION LIMITS WOULD REQUIRE ADDITIONAL GEOLOGICAL INVESTIGATIONS UNLESS BURIED IN A PREVIOUSLY APPROVED BORROW LOCATION.
- TREES AND SHRUBS IN PUBLIC RIGHT-OF-WAY WHICH ARE IN DIRECT CONFLICT WITH PROPOSED NEW CONSTRUCTION SHALL BE REMOVED BY THE CONTRACTOR WITH THE ENGINEER'S APPROVAL. TREES AND SHRUBS WHICH ARE NOT IN DIRECT CONFLICT WITH PROPOSED NEW CONSTRUCTION SHALL BE SAVED AND PROTECTED FROM DAMAGE.
- THE CONTRACTOR SHALL GIVE ALL PROPERTY OWNERS AND/OR TENANTS OF DEVELOPED PROPERTY ABUTTING THE CONSTRUCTION OF THIS PROJECT A MINIMUM OF TEN (10) DAYS NOTICE PRIOR TO START OF CONSTRUCTION.
- THE CONTRACTOR SHALL BE RESPONSIBLE FOR PRESERVING PROPERTY IRONS. THE CONTRACTOR WILL BE REQUIRED TO RE-ESTABLISH ANY PROPERTY IRONS WHICH ARE DAMAGED OR DESTROYED BY HIS CONSTRUCTION OPERATIONS. SUCH IRONS SHALL BE RE-ESTABLISHED BY A LICENSED LAND SURVEYOR IN ACCORDANCE WITH STATE LAWS.
- THE WATER DISTRIBUTION DIVISION SHALL FIELD LOCATE WATER VALVES ONE TIME DURING CONSTRUCTION WHEN REQUESTED BY THE CONTRACTOR. IT SHALL BE THE CONTRACTOR'S RESPONSIBILITY TO PRESERVE SUCH FIELD LOCATIONS DURING THE CONSTRUCTION PROCESS. WATER VALVES, VALVE BOXES OR FIRE HYDRANTS DAMAGED DURING CONSTRUCTION SHALL BE REPAIRED BY CONTRACTOR AT HIS OWN EXPENSE. VALVE BOXES AND WATER METERS WITHIN THE PROJECT LIMITS SHALL BE ADJUSTED TO MATCH FIELD GRADES.
- THE CONTRACTOR SHALL NOTIFY THE CONSULTANT ENGINEER AND TOM MASON WITH THE CITY AT 316-268-4574 WITH THE ANTICIPATED CONSTRUCTION START DATE AND NOTIFY THEM OF PROJECT COMPLETION. STAKING FOR THIS PROJECT WILL BE THE RESPONSIBILITY OF THE CONTRACTOR. MKEC ENGINEERING, INC. WILL PROVIDE INSPECTION AT NO EXPENSE TO THE CONTRACTOR.
- IF TRAFFIC WILL BE IMPACTED BY CONSTRUCTION, A TRAFFIC CONTROL PLAN MUST BE SUBMITTED AND APPROVED BY THE CITY TRAFFIC ENGINEER, BRIAN COON AT [traffic@wichita.gov](mailto:traffic@wichita.gov) BEFORE CONSTRUCTION CAN BEGIN. THE CONTRACTOR SHALL BE RESPONSIBLE FOR ALL TRAFFIC CONTROL MEASURES TO FACILITATE CONSTRUCTION. ALL CONSTRUCTION ZONE MARKINGS AND SIGNAGE SHALL CONFORM TO THE LATEST VERSION OF THE MANUAL ON UNIFORM TRAFFIC CONTROL DEVICES (MUTCD) AS PUBLISHED BY THE US DEPT. OF TRANSPORTATION, FEDERAL HIGHWAY ADMINISTRATION. ALL COSTS ASSOCIATED WITH CONSTRUCTION MARKINGS AND SIGNAGE SHALL BE THE CONTRACTOR'S RESPONSIBILITY.
- ALL ELEVATIONS SHOWN ARE U.S.G.S. DATUM (NAVD 88).
- ALL AREAS DISTURBED DURING CONSTRUCTION THAT WILL NOT BE UNDER PROPOSED PAVEMENT SHALL BE RESTORED TO MATCH EXISTING CONDITIONS, UNLESS OTHERWISE NOTED IN PLANS.
- FOLLOW THE LINK BELOW FOR SPECIFIC CITY OF WICHITA STANDARD DETAILS:  
<http://www.wichita.gov/government/departments/pw/standardsconstruction>  
 STORMWATER DETAILS: SW101, SW103, SW111 & SW202  
 EROSION DETAILS: SW501, SW502, SW503, SW504, & SW505
- CONTRACTOR SHALL LIMIT THE EXTENT OF TRENCH OPEN OVERNIGHT AND WEEKENDS TO LESS THAN 50 FEET.
- EXISTING UTILITIES AND THEIR LOCATION, AS SHOWN ON THE PLANS REPRESENT THE BEST INFORMATION OBTAINABLE FOR DESIGN. LOCATION INFORMATION HAS BEEN OBTAINED FROM THE VARIOUS COMPANIES AND IS EITHER FROM COMPANY UTILITY DRAWINGS OR COMPANY PROVIDED FIELD LOCATIONS. THE PLAN LOCATIONS SHOWN ARE NOT GUARANTEED. ADDITIONAL EXISTING UTILITIES MAY ALSO BE ENCOUNTERED.
- A PORTION OF EXCESS EXCAVATED MATERIAL SHALL BE MOUNDING AROUND MANHOLES WHICH EXTEND MORE THAN ONE (1) FOOT ABOVE THE EXISTING GROUND. SUCH MOUND SHALL BE CONSTRUCTED WITH NEW DEVELOPMENT A SIX (6) FOOT DIAMETER FLAT TOP WITH 4 TO 1 SIDE SLOPES DOWN TO THE ORIGINAL GROUND. THE ELEVATION OF THE FLAT TOP OF THE MOUND SHALL BE 0.4 FOOT BELOW THE TOP OF THE MANHOLE.
- GEOTECHNICAL REPORT AVAILABLE UPON REQUEST.
- CONTRACTOR SHALL PROVIDE POSITIVE DRAINAGE AWAY FROM ALL MANHOLE COVERS.
- CITY MAINTENANCE OF STORM SEWER ENDS AT RIGHT-OF-WAY OR EASEMENT LINE. SWS LINE 1 CURB INLET SHALL BE MAINTAINED BY CITY OF WICHITA STORM WATER DEPARTMENT. ALL OTHER LINES AND STRUCTURES SHALL BE MAINTAINED BY OWNER.
- ANY SIDEWALK, DRIVE APPROACH, OR STREET PAVEMENT WITHIN PUBLIC RIGHT-OF-WAY REMOVED TO CONSTRUCT PROJECT MUST HAVE A PAVEMENT CUT PERMIT AND BE REPLACED BY CITY CONTRACTOR. PERMITS CAN BE OBTAINED BY CALLING 316-268-4501 OR 316-268-4480.
- THE INSPECTING FIRM SHALL SUBMIT TO THE CITY STORMWATER MAINTENANCE DIVISION A DIGITAL COPY OF THE CCTV INSPECTION OF THE CONDUITS AND STRUCTURES FOLLOWING CONSTRUCTION. THE DIGITAL FILE FORMATION SHALL BE COMPATIBLE WITH THE CITY INPUT TEMPLATE. A COPY OF THE TEMPLATE IS AVAILABLE UPON REQUEST AT 316-268-4090.
- WORK DONE UNDER THIS PROJECT IS SUBJECT TO THE CITY OF WICHITA REQUIREMENTS FOR "CONSTRUCTION OF INFRASTRUCTURE IMPROVEMENTS BY PRIVATE CONTRACT". THE CONTRACTOR SHALL BE FAMILIAR AND COMPLY WITH ALL OF THE REQUIREMENTS, INCLUDING BONDING, INSPECTION, TESTING, NOTIFICATION, PROVIDING AS-BUILT DRAWINGS, PAYING FOR ALL NECESSARY CONNECTIONS, AND/OR STREET REPAIR FEES AND PROVIDING PIPE MATERIAL AND OTHER CERTIFICATIONS.
- DEVELOPER FOR THIS PROJECT IS:  
 WICHITA STATE UNIVERSITY, 1845 FAIRMOUNT ST., WICHITA, KS 67260  
 ERIC KING - DIRECTOR FACILITIES PLANNING, (316) 978-3030

**PRIVATE STORM WATER SEWER**

TO SERVE

**17TH ST. ENTRY DRIVE/PARKING**

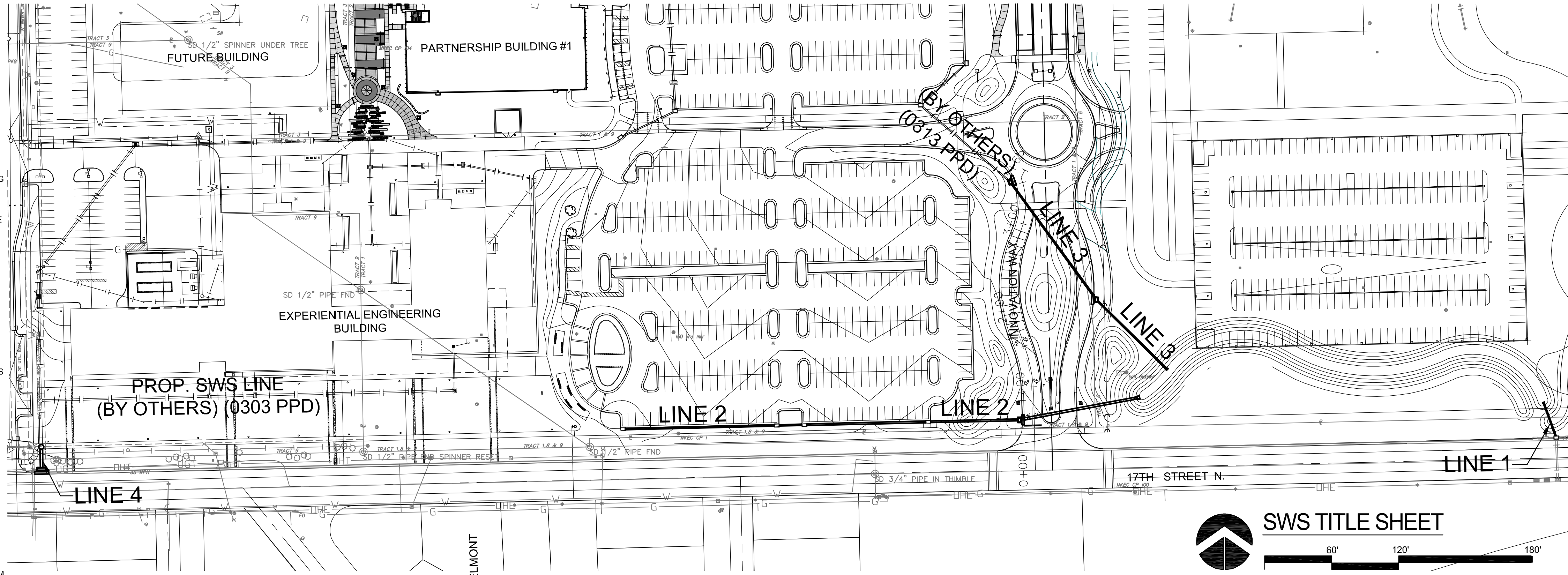
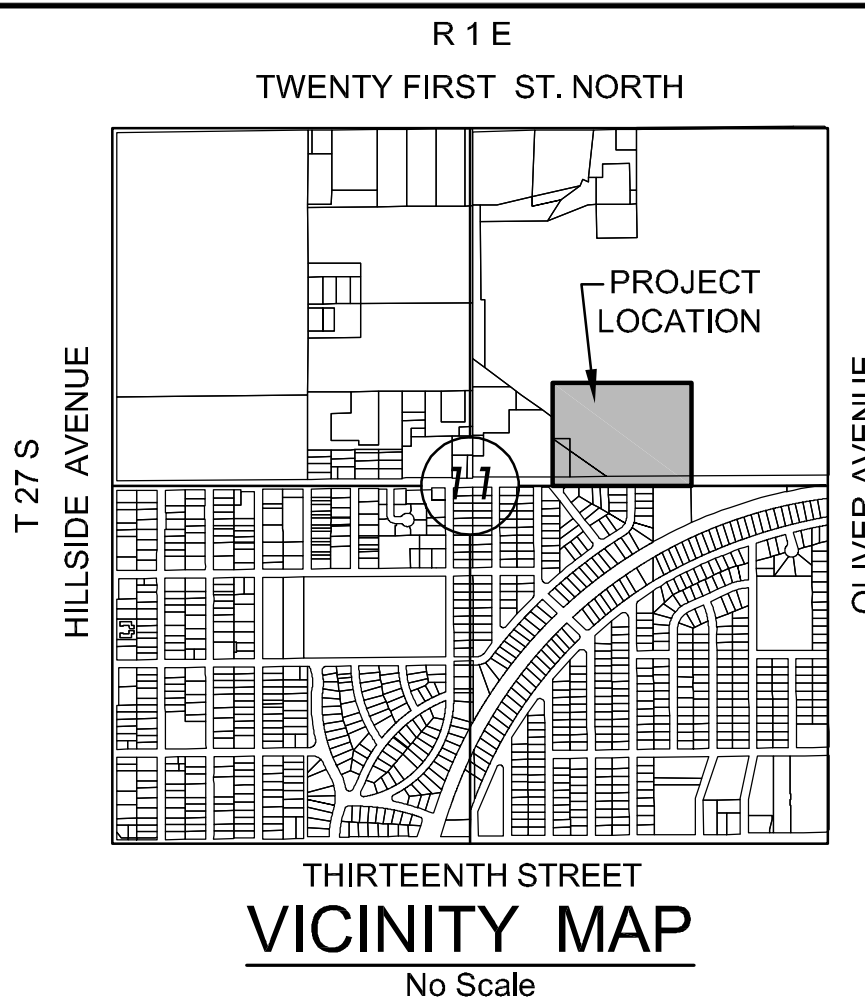
A PORTION OF

**WSU - INNOVATION CAMPUS**

PROJECT NO. 0315PPD

THE CITY OF WICHITA, KANSAS  
 GARY JANZEN, P.E. - CITY ENGINEER

OCA 607861



**AS-BUILT PLANS - FEBRUARY 2017**

INSPECTED BY: LARRY SCHALLER, MKEC ENGINEERING, INC  
 CONSTRUCTED BY: MIES CONSTRUCTION

BENCHMARK & CONTROL POINT INFORMATION ON BUBBLE MAP, SHEET 55.

SWALE/POND TABLE		
ELEVATION	STORAGE (AC.-FT.)	DISCHARGE (CFS)
1402	0	0
1403	0.1	3.6
1404	0.2	6.9
1405	0.5	9.1
1406	1.0	10.9
1407	1.7	43.6
1407.5	2.3	70.4
1408	3.4	469.6

**Stormwater Certification:**

Redevelopment and New Development

These construction plans were prepared in accordance with the current Stormwater Management Regulations as set forth in the City of Wichita's Stormwater Management Ordinance 16.32 and the policies/guidelines presented in the Wichita/Sedgwick County Stormwater Manual.

**Redevelopment (West Parking Area)**  
 Redeveloped Impervious Area = 1.89 AC  
 Water Quality Treatment = 0.05 AC-FT  
 Downstream Channel Protection = 0.07 AC-FT  
 Detention = N/A - Overall west drainage basin has been reduced from existing drainage area to eliminate detention requirement.

**New Development (East Parking Area)**  
 Disturbed Pervious Area = 1.66 AC  
 Impervious Area = 4.57 AC  
 Water Quality Treatment = 0.48 AC-FT  
 Downstream Channel Protection = 0.78 AC-FT  
 Detention = 2.3 AC-FT - Provided by grass channel/dry detention until a permanent wet pond is constructed near Line 1.

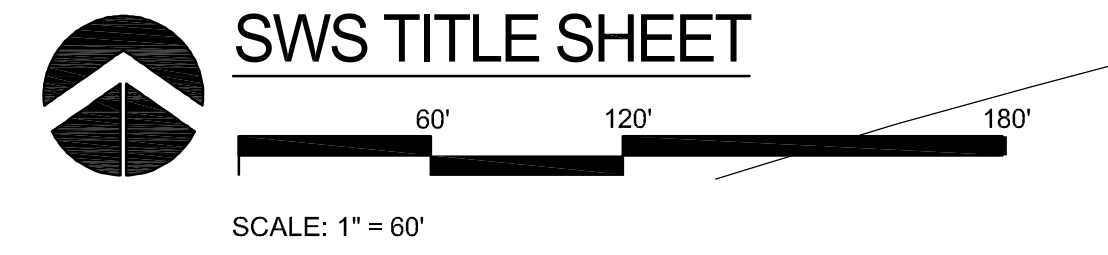
The BMP used for this development is the proposed grass channel, the Snout structure in the downstream curb inlet and the future common detention pond.

**INDEX TO DRAWINGS**

SHEET NO.	DESCRIPTION
45	SWS TITLE SHEET
46-50	SWS DETAILS
51	SWS LINE 1 & 4
52-53	SWS LINE 2
54	SWS LINE 3
55	SWS BUBBLE MAP
11-22	*GRADING PLANS
07-08	*EROSION CONTROL PLANS

SEE GENERAL NOTE #13 FOR CITY OF WICHITA STANDARD BMP LINK

\* EROSION CONTROL PLANS & GRADING PLANS ARE PROVIDED FOR CITY OF WICHITA REVIEW. FOR INFORMATION ONLY.



**APPROVED AS NOTED BY CITY ENGINEER OF WICHITA, BY STORMWATER DEPARTMENT**

Engineering: *Robert Giff* 11/2/2015  
 Storm Water (Public Works): *Joe Hinkle PE* 11/2/15

**NOTE TO CONTRACTORS**

**Public Property:**  
 Inspection and testing for the storm water sewer is to be provided by a Licensed Consulting Engineering Firm under contract with the Owner/Developer. Said inspection to be in accordance with the City of Wichita Standard Construction Engineering Practices and certified by a Professional Engineer licensed in the state of Kansas. No work shall be performed in dedicated easements or public rights-of-way by the Contractor without such inspection, nor shall any work be commenced without written authorization by the City Engineer. All construction and materials shall comply with the current City of Wichita Specifications and Standards and Special Provisions (on file and available in the City Engineer's Office or at [Wichita.gov](http://Wichita.gov)).

An approved copy of these plans signed by City staff are required on-site.

**MKEC**  
 Wichita, KS • 316-684-9800

**PROFESSIONAL ENGINEER**  
 GARY JANZEN  
 No. 44423  
 Exp. 12/31/2015

NO.	REVISION	DATE

DIVISION OF ADMINISTRATION & FINANCE  
 FACILITIES PLANNING  
 1845 FAIRMOUNT ST.  
 WICHITA, KANSAS 67260-0047  
 Phone: 316-978-3030

Department of Administration  
 Office of Facilities & Procurement Management  
 Design, Construction & Compliance  
 800 SW Jackson, Suite 700  
 Topeka, Kansas 66612-1216  
 Phone 785-296-8899

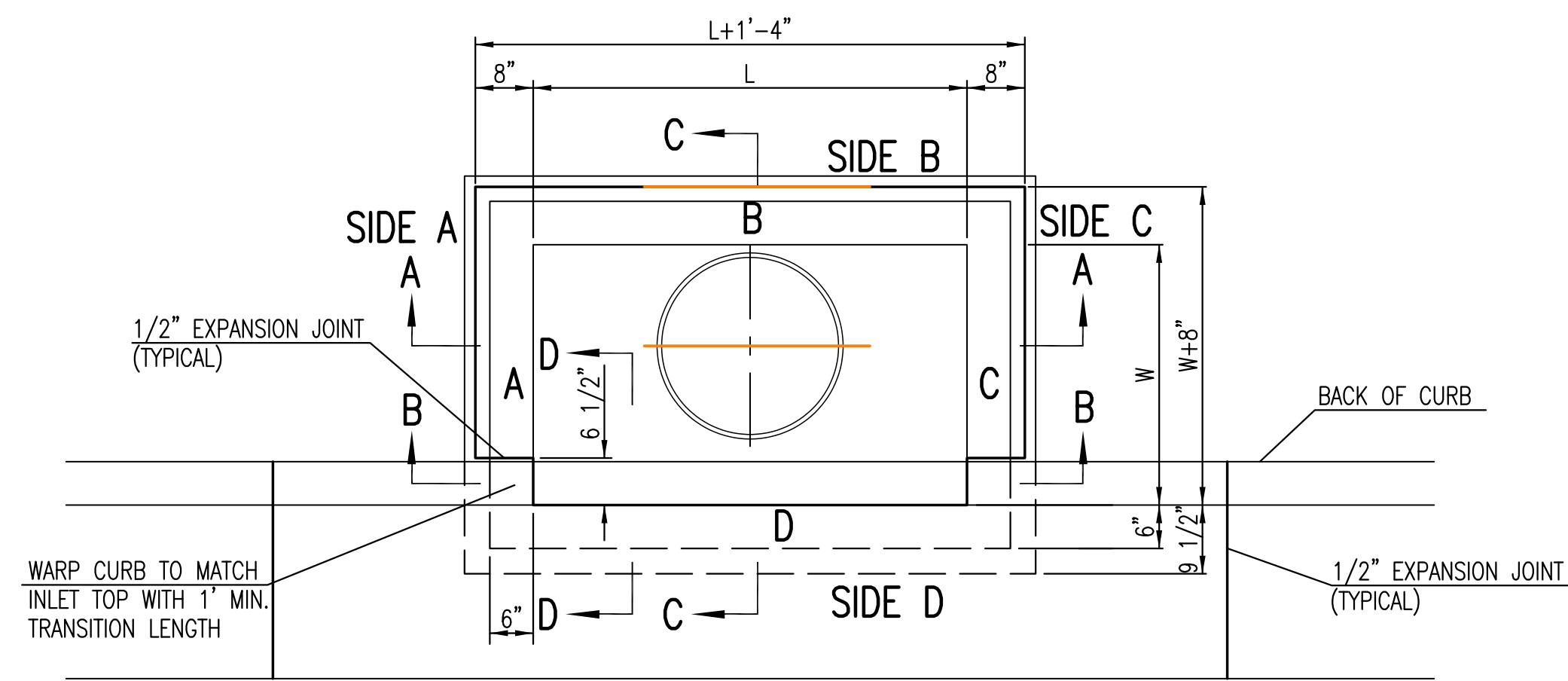
WICHITA STATE UNIVERSITY  
 17th ST. ENTRY DRIVE/PARKING  
 1845 FAIRMOUNT ST.  
 WICHITA, KANSAS 67260-0023

DATE: 06/19/2015  
 DRAWN BY: SPE  
 CHECKED BY: SPE

**SWS TITLE SHEET**  
 A-012680Rev  
 45 OF 81

ORIGINAL CONTRACT DOCUMENTS

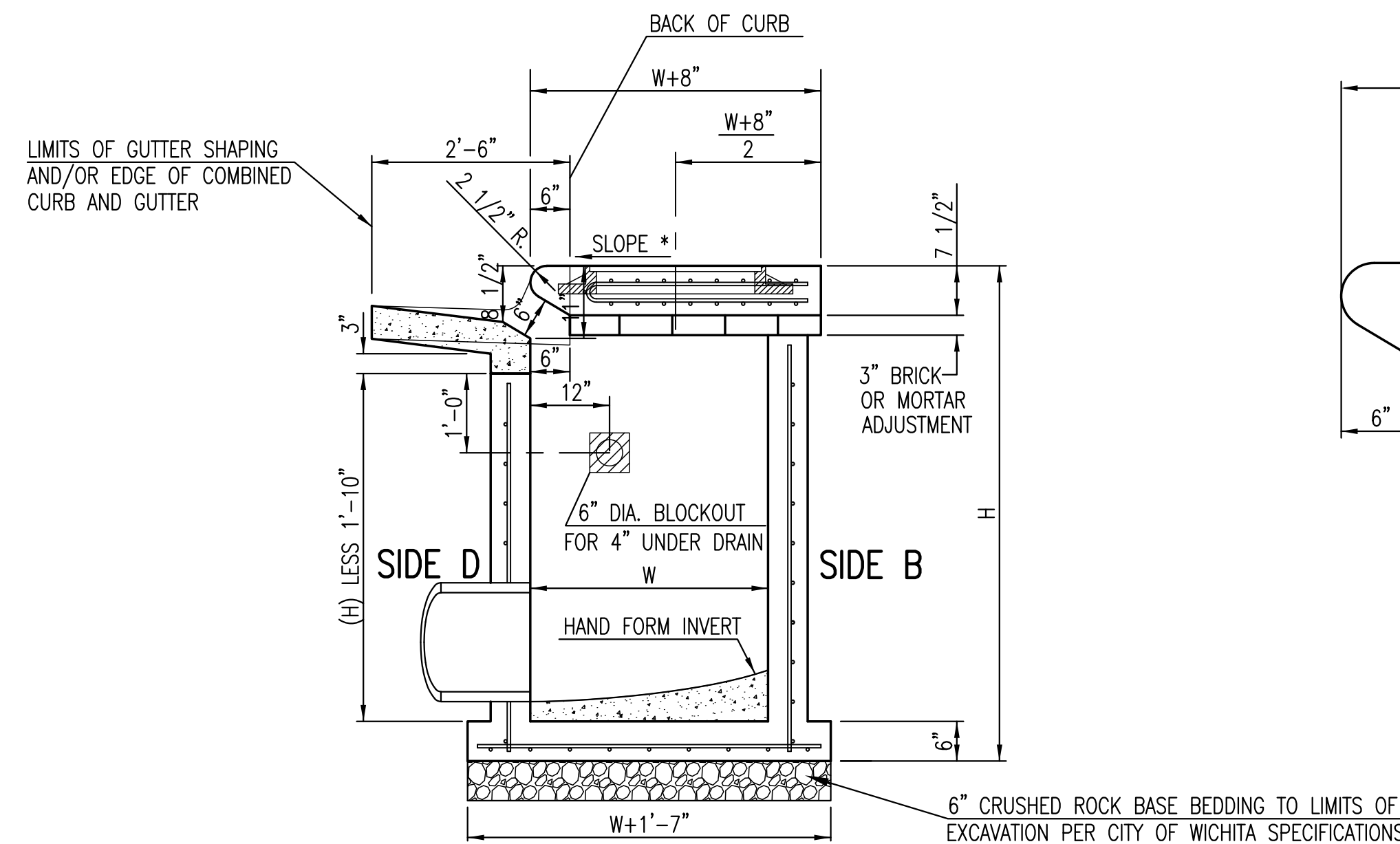
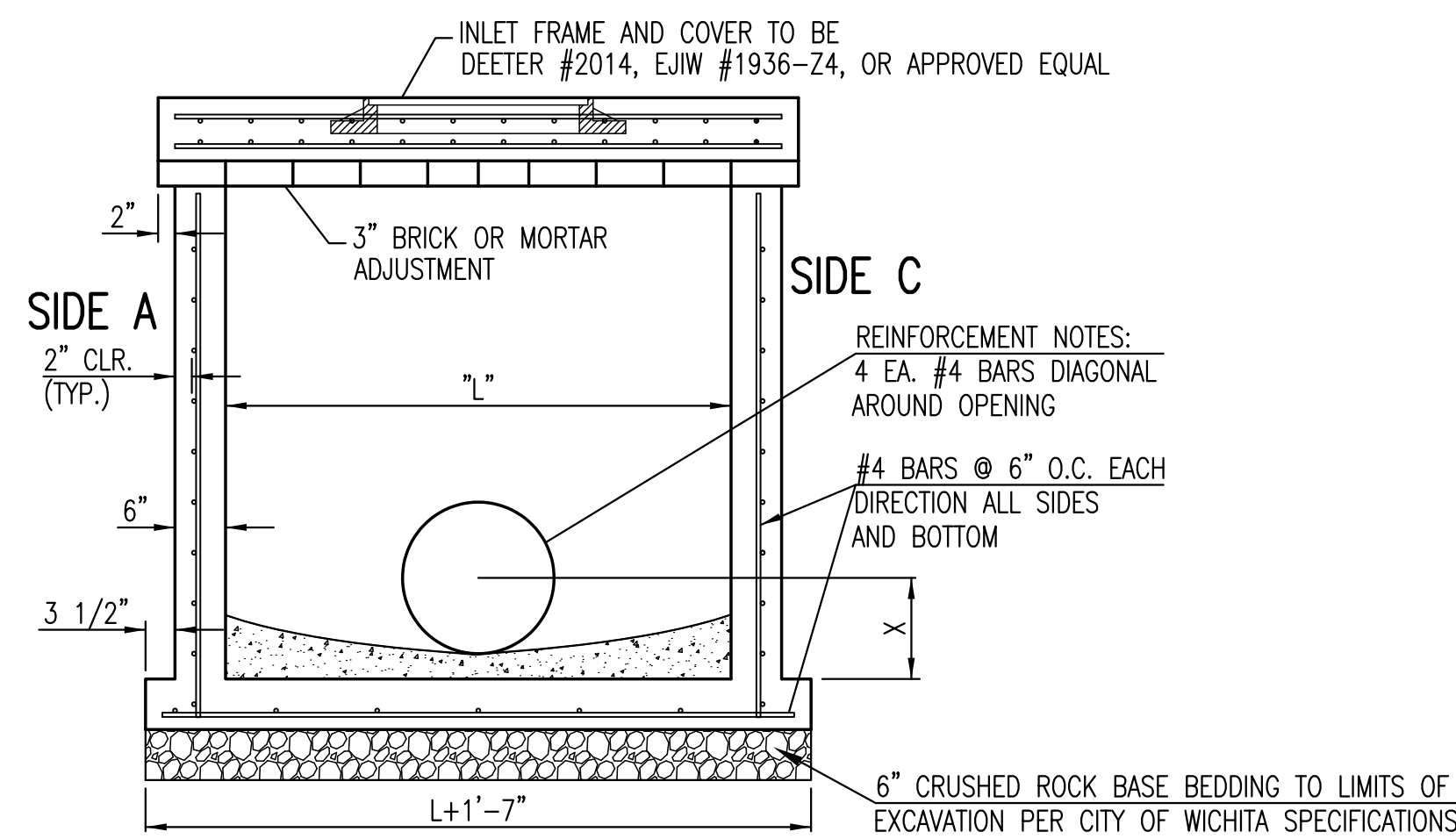
J:\PROJECTS\2015\1910\001074\_KS DEPT ADMIN\_VSU\_17TH ST DR & PARKING LOT\_15074\_CAD\SHS\GIS CIVIL\SWS\15074\_P12\_DTD1.DWG  
 PLOTTED: Wednesday, March 01, 2017 9:04:28AM



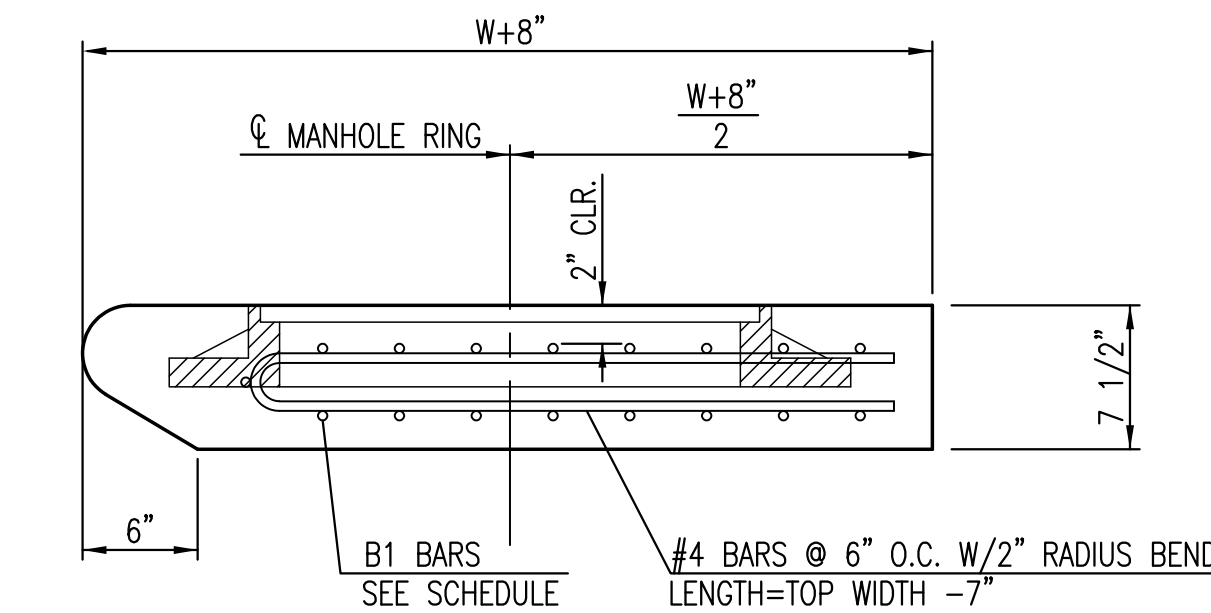
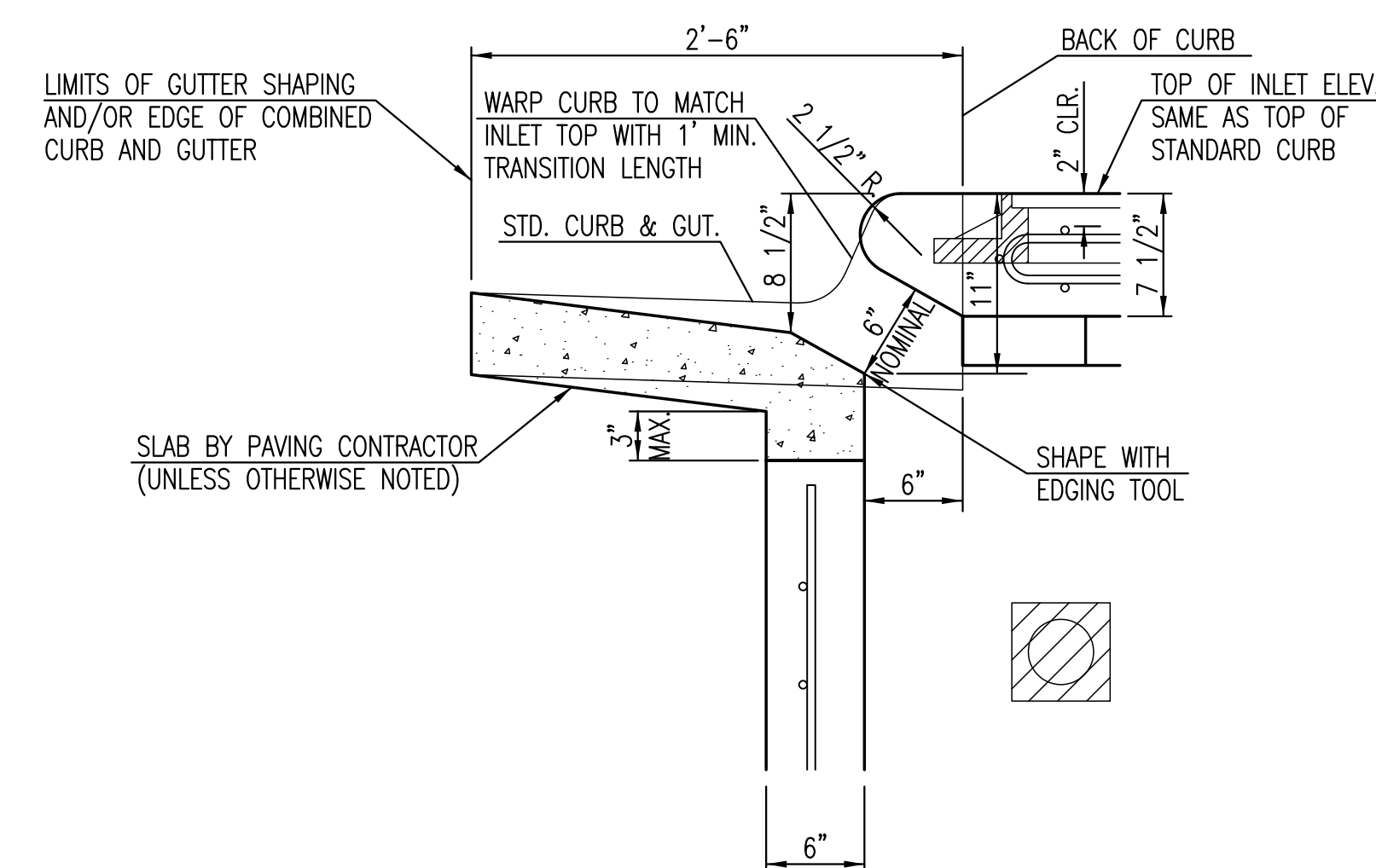
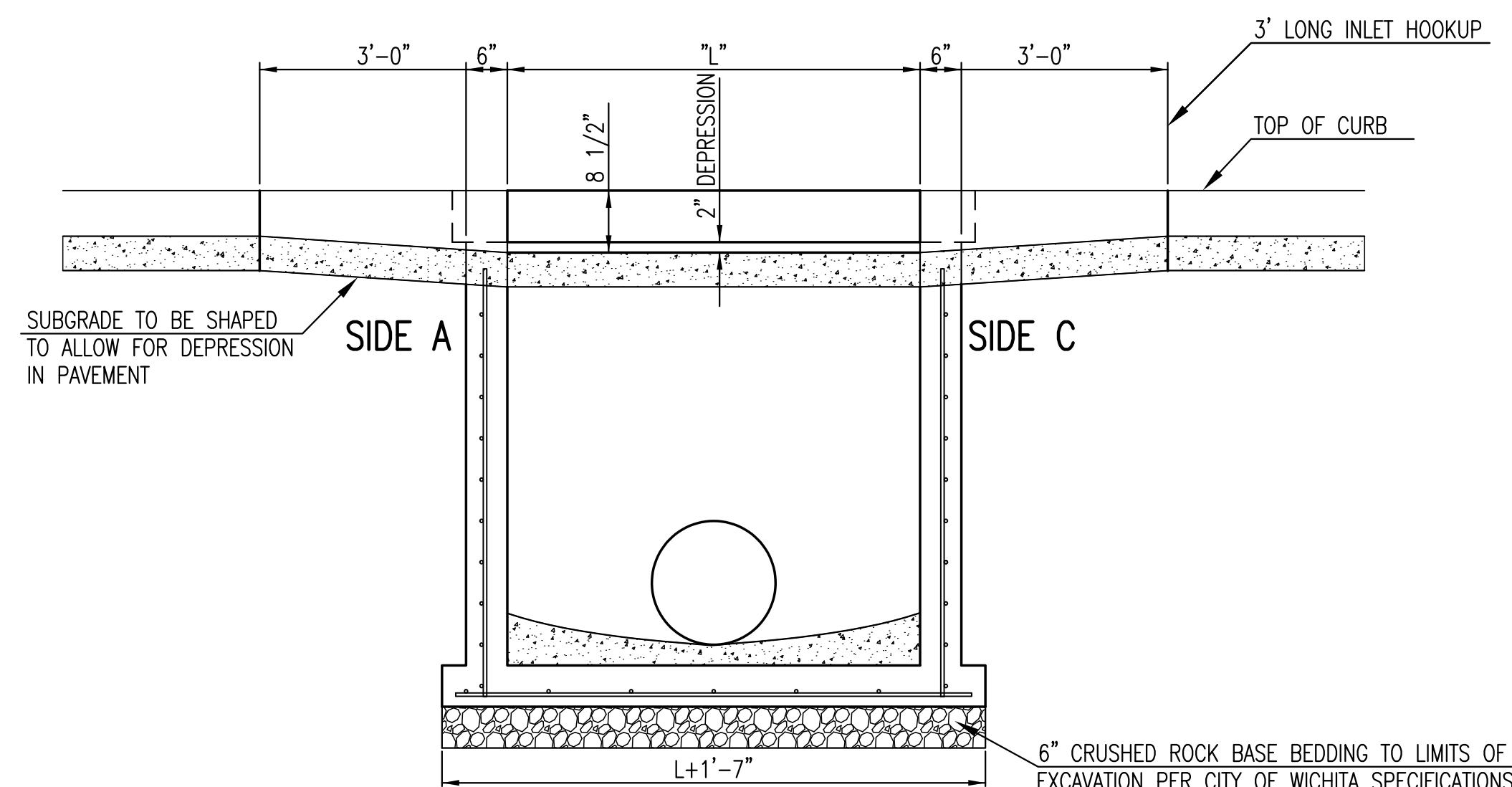
BAR SCHEDULE		
INLET OPENING	B1 BARS	SPACING
5'-0"	#4	4"
10'-0"	#6	3.5"

W	PRE-CAST TOP SIZE			PIPE DIA.**
	WIDTH	LENGTH	TOP	
3'-0"	W+8"	L+1'-4"	7 1/2"	21" & SMALLER
4'-0"	W+8"	L+1'-4"	7 1/2"	24" & 30"
5'-0"	W+8"	L+1'-4"	7 1/2"	36" & 42"
6'-0"	W+8"	L+1'-4"	7 1/2"	48" & 54"
7'-0"	W+8"	L+1'-4"	7 1/2"	60" & 66"

\*\* FOR PIPES PERPENDICULAR TO INLET WALL



NOTES:  
 \* SLOPE OF INLET TOP TO MATCH SIDEWALK OR PARKING SLOPES WITHIN LIMITS INDICATED.



GENERAL NOTES

1. CONCRETE TOPS TO BE INSTALLED ON THIN MORTAR CUSHION TO INSURE FULL SUPPORT ALONG BRICK. CONCRETE TOPS MAY BE CAST IN PLACE OR PRECAST. CONCRETE USED FOR INLET CONSTRUCTION SHALL CONFORM TO CITY OF WICHITA SPECIFICATIONS FOR CONCRETE PAVEMENT MIX.
2. CONTRACTOR SHALL HAVE THE OPTION OF CONSTRUCTING 8" BRICK MASONRY WALLS BETWEEN THE CONCRETE INLET BASE AND TOP OF THIS INLET WHEN W=5'-0" AND H=7'-0" OR LESS.
3. INLET INVERT SHALL BE SHAPED WITH 8 SACK SAND MIX CONCRETE TO CREATE FLOW CHANNELS AND TO INCREASE HYDRAULIC EFFICIENCY SUCH THAT THE INLET WILL BE SELF CLEANING BETWEEN ALL INLET AND/OR OUTLET PIPES.
4. THE ENDS OF ALL PIPES INSTALLED IN INLETS SHALL BE CUT OFF FLUSH WITH THE INSIDE FACE OF THE INLET WALL.
5. INLET FRAME AND COVER TO BE DEETER #2014, EJIW #1936 24, OR APPROVED EQUAL, SEE SW-303.
6. CONTRACTOR SHALL REMOVE LIFTING HOOKS AFTER INSTALLATION. RECESSES IN INLET WALL SHALL BE GROUTED FLUSH TO THE INLET WALL WITH HYDRAULIC CEMENT AFTER THE INLET IS IN PLACE. LIFTING HOLES THRU THE INLET WALL WILL NOT BE ACCEPTED.

AS-BUILT PLANS - FEBRUARY 2017

C.O.W. DETAIL #SW101

REVISION	DATE

DIVISION OF ADMINISTRATION & FINANCE  
 FACILITIES PLANNING  
 1845 FAIRMOUNT ST.  
 WICHITA, KANSAS 67260-0047  
 Phone 316-978-3030

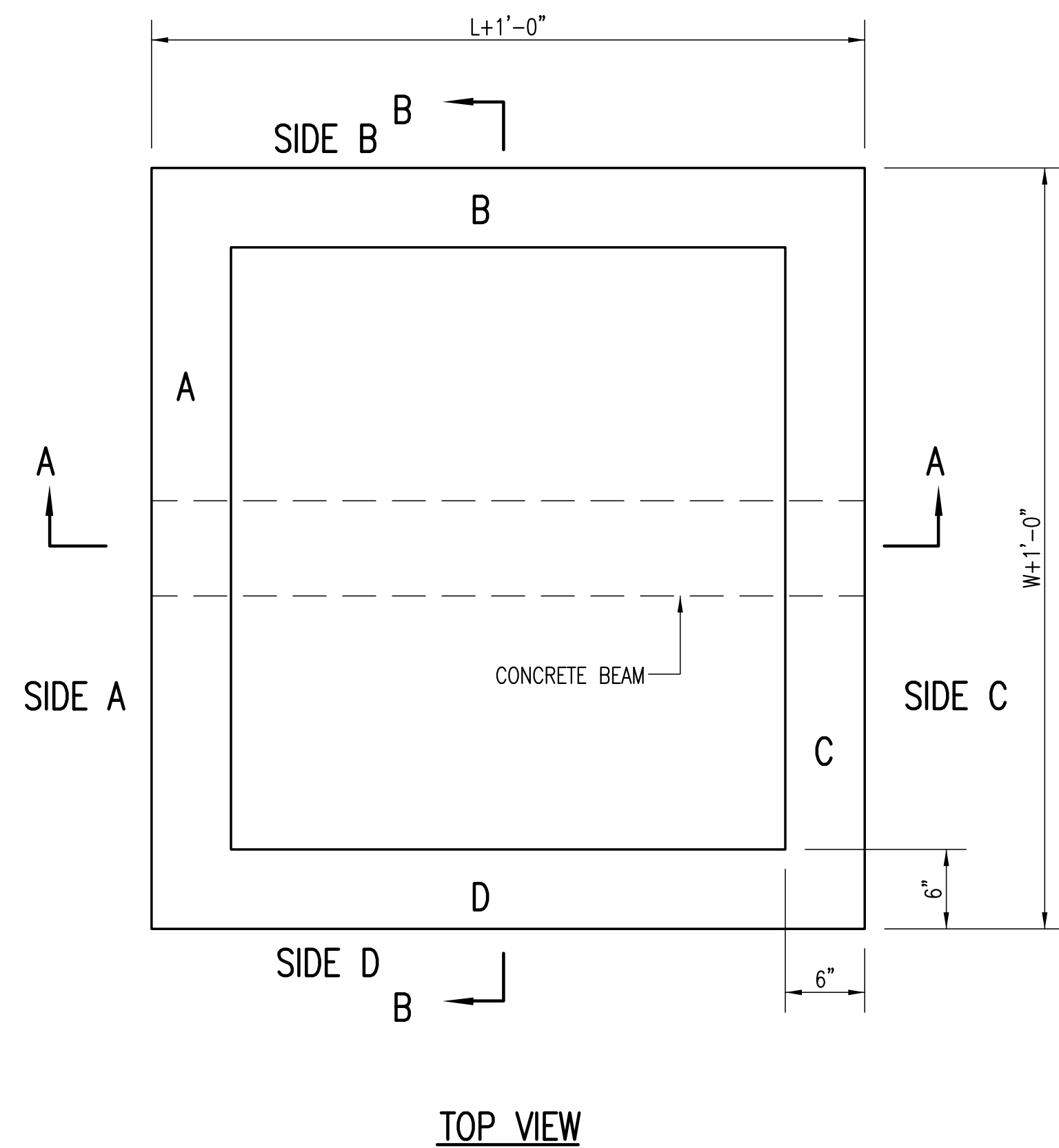
Department of Administration  
 Office of Facilities & Procurement  
 Management  
 Design, Construction & Compliance  
 800 SW Jackson, Suite 700  
 Topeka, Kansas 66612-1216  
 Phone 785-296-8899

WICHITA STATE UNIVERSITY  
 17th ST. ENTRY DRIVE/PARKING  
 1845 FAIRMOUNT ST.  
 WICHITA, KANSAS 67260-0023  
 DATE: 06/19/2015 DRAWN BY: LES CHECKED BY: SPE

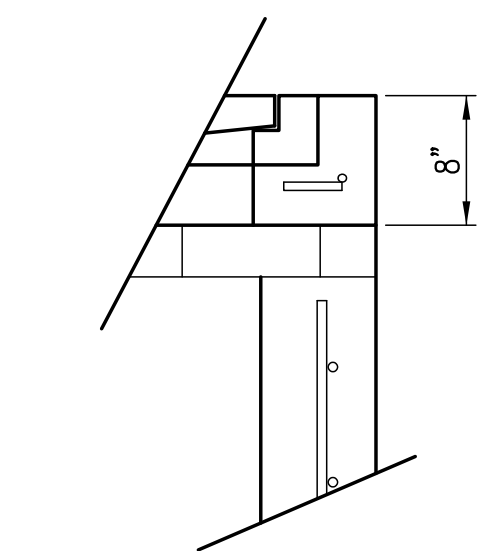


PLOTTED: Wednesday, March 01, 2017 @ 04:32PM

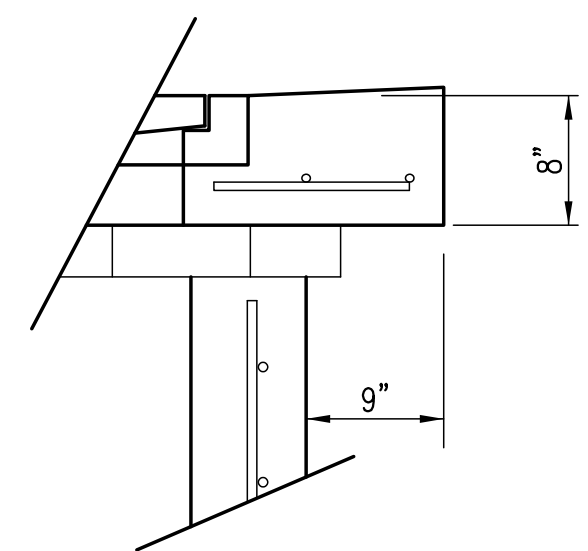
J:\PROJECTS\2015\190100074\_KS DEPT ADMIN\_VSU\_17TH ST DR & PARKING LOT\_15974\_CADD\SHETS\95 CIVIL\SW15974\_PH2\_DD05.DWG



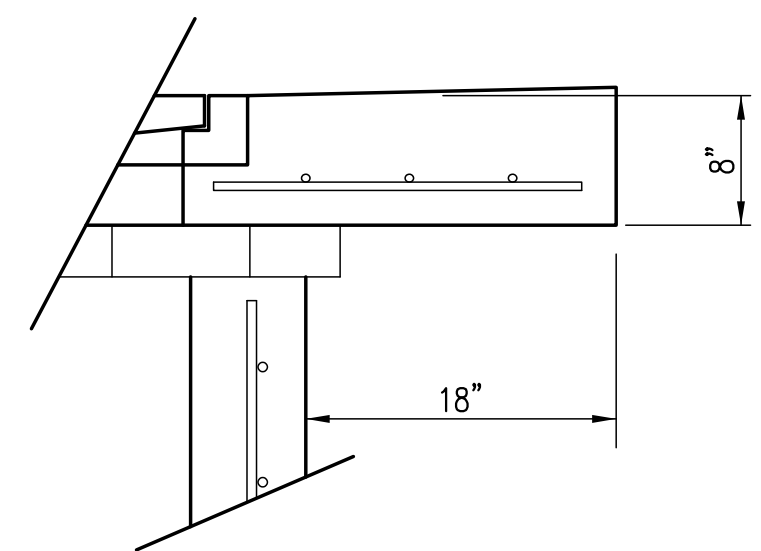
TOP VIEW



FLUSH STYLE TOP  
NO APRON



9" APRON



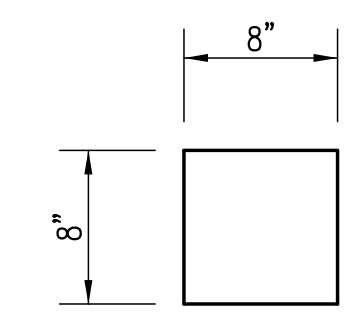
18" APRON

\* APRON TO EXTEND ON ALL 4 SIDES OF INLET.  
DESIGNER TO DESIGNATE APRON SIZE.

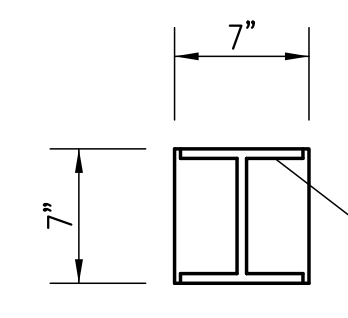
W=4'-4" and L=4' for DOUBLE DROP INLET

The structure(s) on this detail sheet are designed for HS-20 loading at these specific dimensions only. If larger dimensions are required, the ENGINEER shall provide a project specific structure design for approval by the City Engineer's office.

BEAM REQUIRED FOR THIS INLET



CONCRETE BEAM POCKET

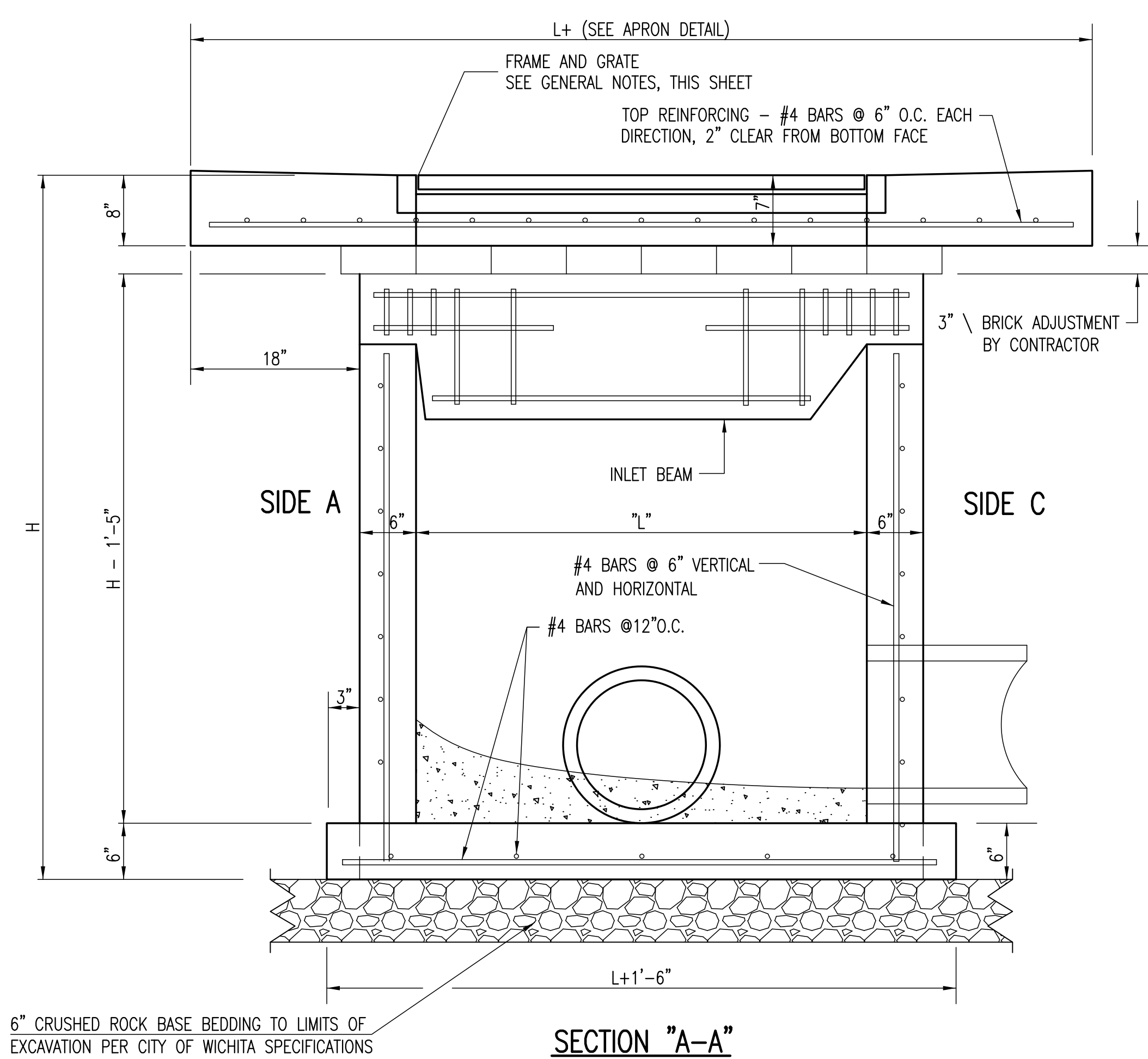


GALV. STEEL BEAM POCKET

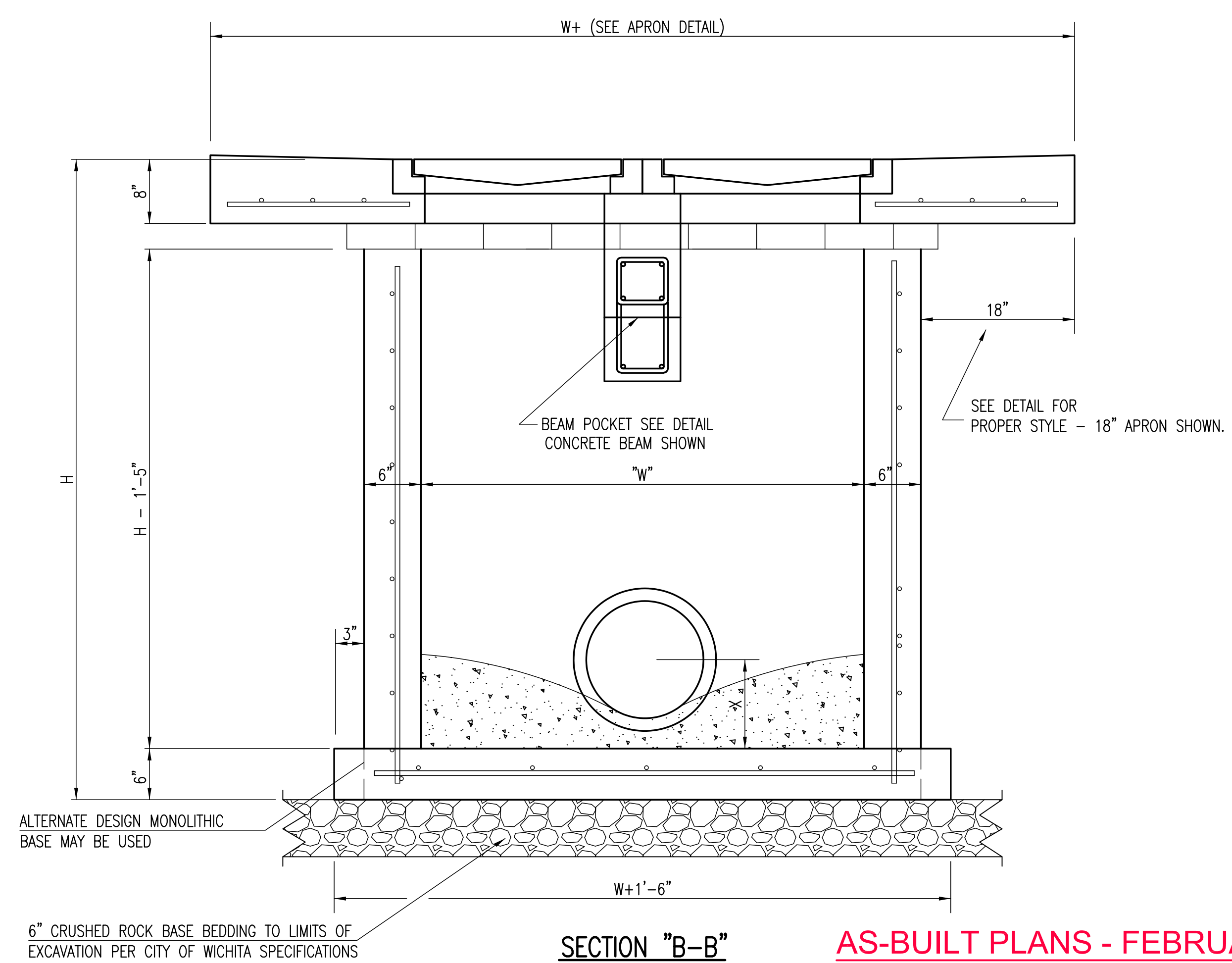
W6x25# GALVANIZED BEAM

GENERAL NOTES

1. GRATE FRAME TO BE INSTALLED ON THIN MORTAR CUSHION TO INSURE FULL SUPPORT ALONG BRICK. CONCRETE USED FOR INLET CONSTRUCTION SHALL CONFORM TO CITY OF WICHITA SPECIFICATIONS FOR CONCRETE PAVEMENT MIX.
2. INLET INVERT SHALL BE SHAPED WITH 8 SACK SAND MIX CONCRETE TO CREATE FLOW CHANNELS AND TO INCREASE HYDRAULIC EFFICIENCY SUCH THAT THE INLET WILL BE SELF CLEANING BETWEEN ALL INLET AND/OR OUTLET PIPES.
3. THE ENDS OF ALL PIPES INSTALLED IN INLETS SHALL BE CUT OFF FLUSH WITH THE INSIDE FACE OF THE INLET WALL.
4. INLET FRAME AND GRATE TO BE DEETER #2433, EJIW #5391-21 OR APPROVED EQUAL FOR 2'x2' SINGLE DROP INLET AND DEETER #2434, EJIW #5391 Z3 OR APPROVED EQUAL FOR 2'x4' DOUBLE DROP INLET.
5. CONTRACTOR SHALL REMOVE LIFTING HOOKS AFTER INSTALLATION. RECESSES IN INLET WALL SHALL BE GROUTED FLUSH TO THE INLET WALL WITH HYDRAULIC CEMENT AFTER THE INLET IS IN PLACE. LIFTING HOLES THRU THE INLET WALL WILL NOT BE ACCEPTED.



SECTION "A-A"



SECTION "B-B"

AS-BUILT PLANS - FEBRUARY 2017



REVISION	DATE

DIVISION OF ADMINISTRATION & FINANCE  
FACILITIES PLANNING  
1845 FAIRMOUNT ST.  
WICHITA, KANSAS 67260-0047  
Phone 316-978-3030

Department of Administration  
Office of Facilities & Procurement  
Management  
Design, Construction & Compliance  
800 SW Jackson, Suite 700  
Topeka, Kansas 66612-1216  
Phone 785-296-8899

WICHITA STATE UNIVERSITY  
17th ST. ENTRY DRIVE/PARKING  
1845 FAIRMOUNT ST.  
WICHITA, KANSAS 67260-0023  
DATE: 06/19/2015 DRAWN BY: ABC CHECKED BY: SPE

DOUBLE DOUBLE DROP INLET

A-012680Rev

48 OF 81

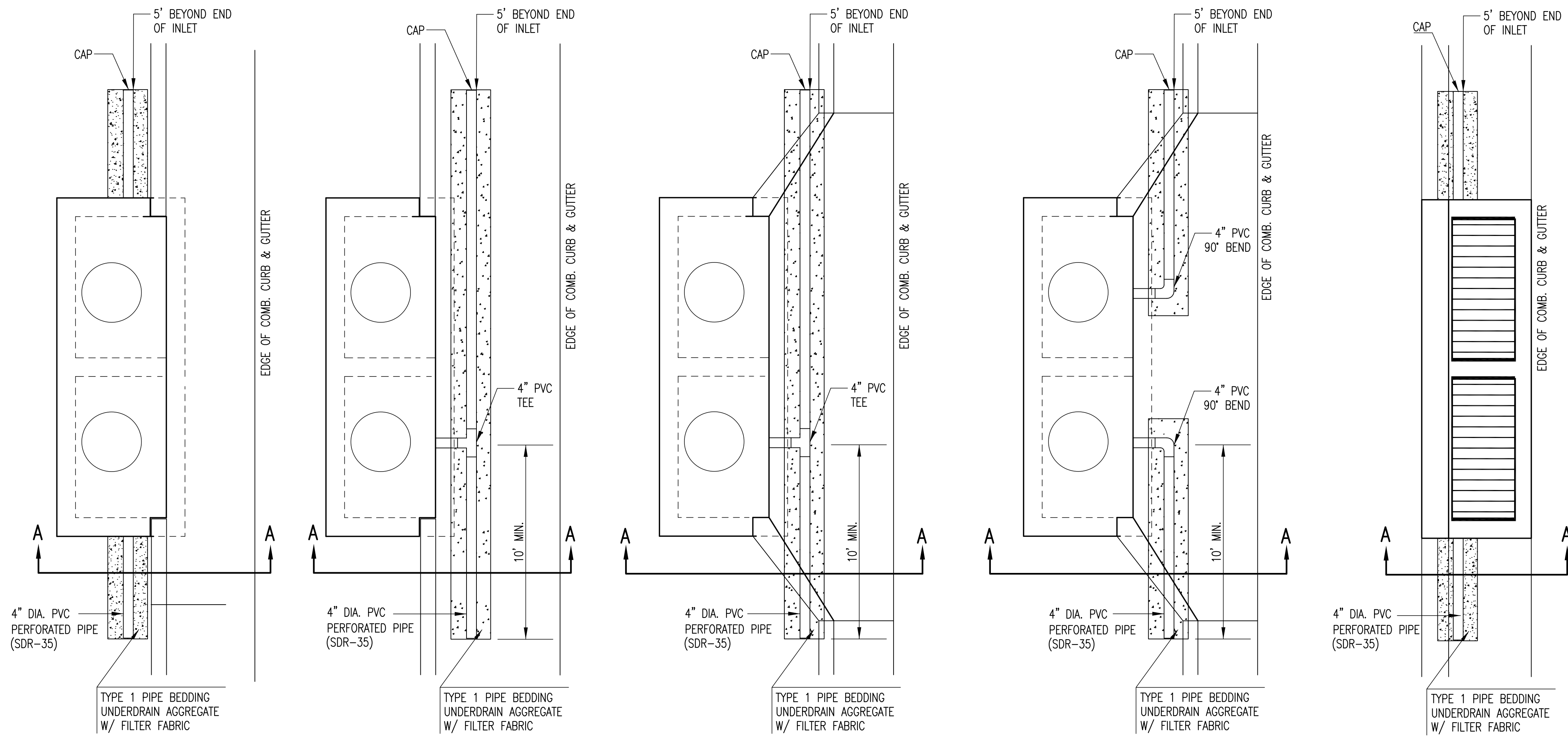
ORIGINAL CONTRACT DOCUMENTS

C.O.W. DETAIL #SW202

PLOTTED: Wednesday, March 01, 2017 @ 04:33PM

J:\PROJECTS\2016\190100074\_KS DEPT ADMIN\_VSU\_17TH ST DR & PARKING LOT\_15974\_CADD\SHETS\65 CIVIL\SW15974\_PH2\_DD03.DWG

PAVEMENT UNDERDRAIN SHALL BE INSTALLED ON ALL CURB INLETS.



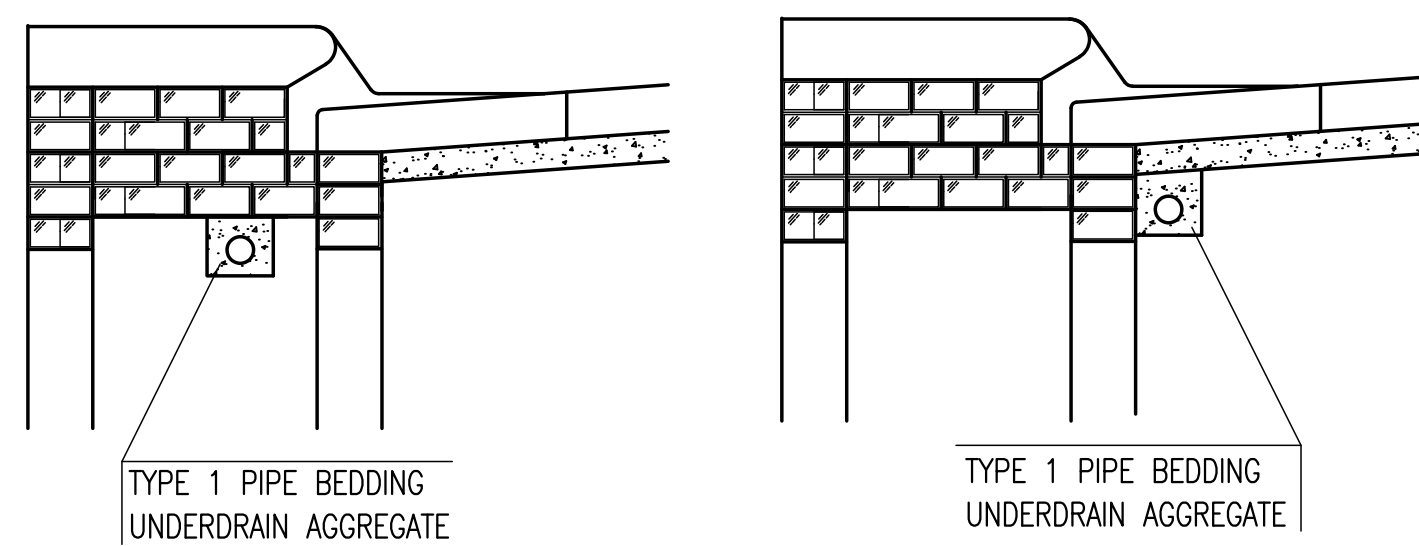
TYPE 1  
OPTION 1

TYPE 1  
OPTION 2

TYPE 1-A INLET  
OPTION 1

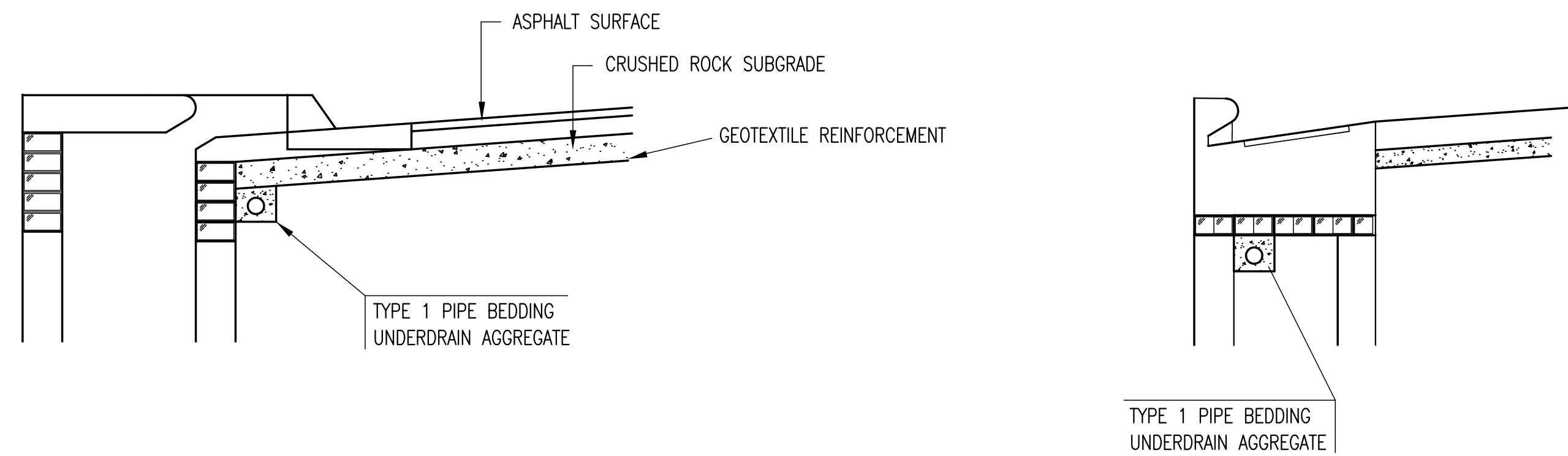
TYPE 1-A INLET  
OPTION 2

TYPE 2



(MIN. 16 PERFORATIONS PER LIN. FT. @ 1/4" DIA.)  
PERFORATIONS TO BE ON BOTTOM HALF

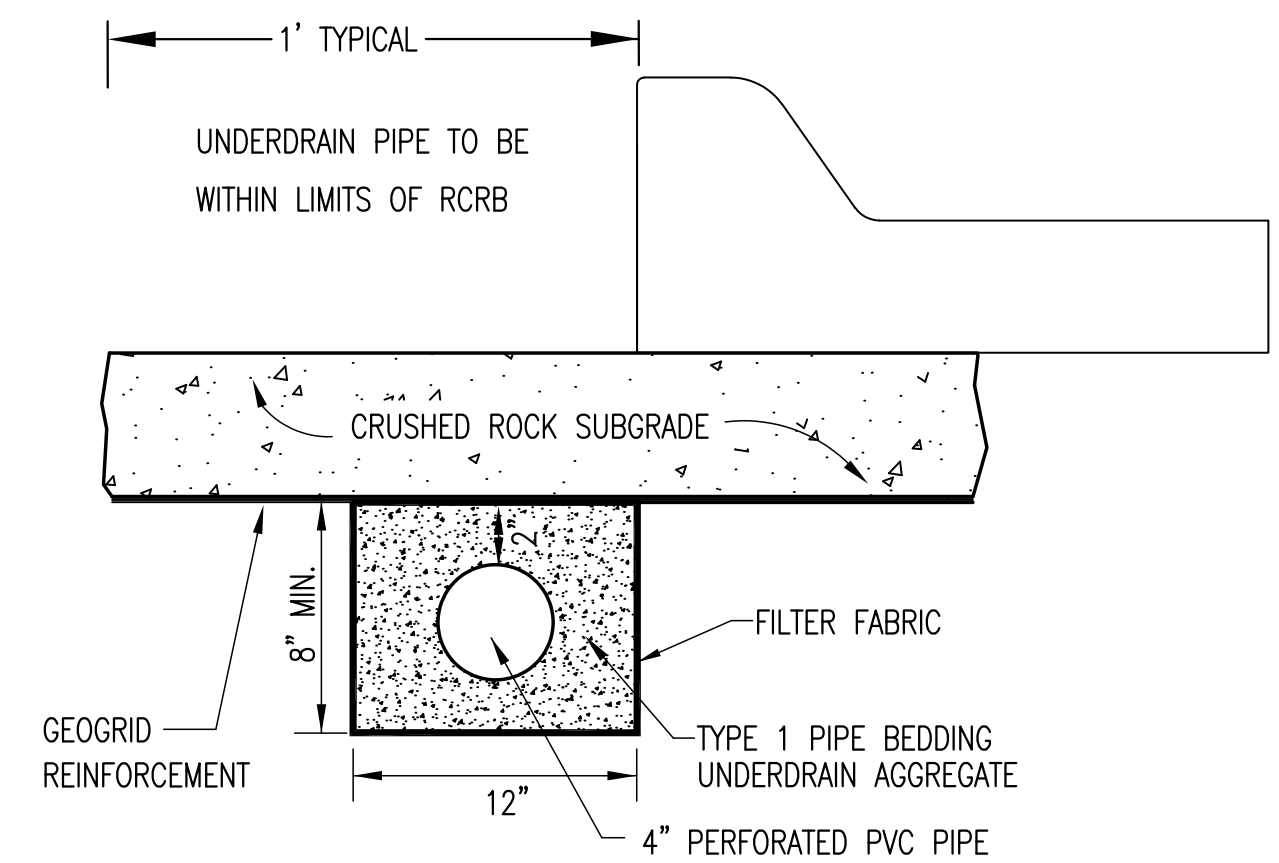
SECTION A-A



SECTION A-A

PAVEMENT UNDERDRAIN DETAIL

BID ITEM TO BE PROVIDED PER 4" PERFORATED UNDERDRAIN PIPE.



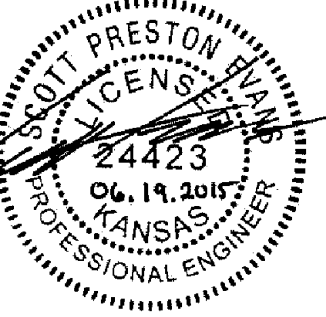
SECTION A-A  
(TYPICAL)

GENERAL NOTES

1. PAVEMENT CONTRACTOR WILL BE REQUIRED TO INSTALL SDR 35, 4" PERFORATED DRAIN PIPE AND TEE AS INDICATED IN THE DETAILS.
2. WHEN SWS CONSTRUCTED BY SEPARATE PROJECT, SWS CONTRACTOR SHALL INSTALL SDR 35, 4" DRAIN PIPE STUB ONLY THROUGH WALLS OF CURB INLETS AND CAP TO ALLOW FUTURE CONNECTION OF TEE AND ADDITIONAL DRAIN PIPE BY OTHERS.
3. UNDERDRAIN PIPE SHALL BE PAID AS A MEASURED QUANTITY BY THE LINEAL FOOT.



Wichita, KS • 316-684-9600



REVISION	DATE

DIVISION OF ADMINISTRATION & FINANCE  
FACILITIES PLANNING  
1845 FAIRMOUNT ST.  
WICHITA, KANSAS 67260-0047  
Phone 316-978-3030

Department of Administration & Procurement  
Office of Facilities & Procurement Management  
Design, Construction & Compliance  
800 SW Jackson, Suite 700  
Topeka, Kansas 66612-1216  
Phone 785-296-8899

WICHITA STATE UNIVERSITY  
17th ST. ENTRY DRIVE/PARKING  
1845 FAIRMOUNT ST.  
WICHITA, KANSAS 67260-0023  
DATE: 06/19/2015 DRAWN BY: LES CHECKED BY: SPE

PAVEMENT UNDERDRAIN

A-012680Rev

49 OF 81

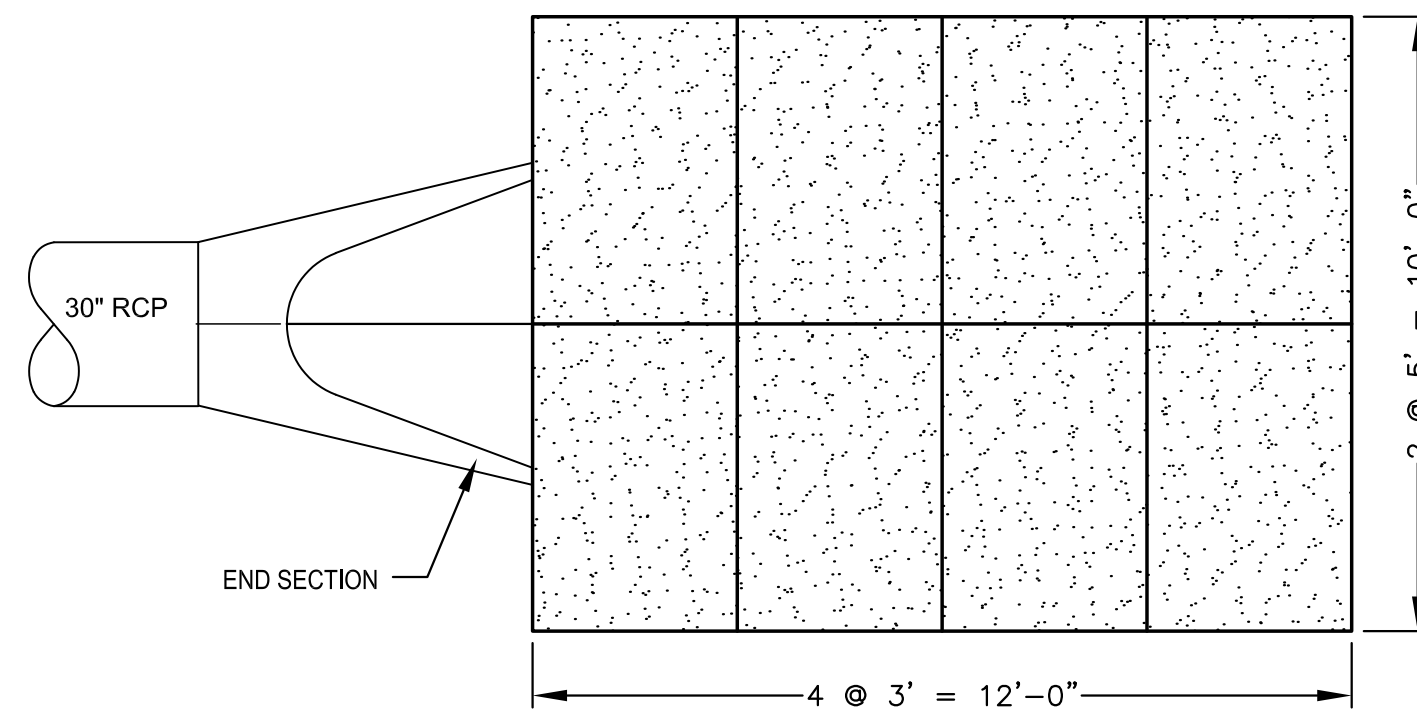
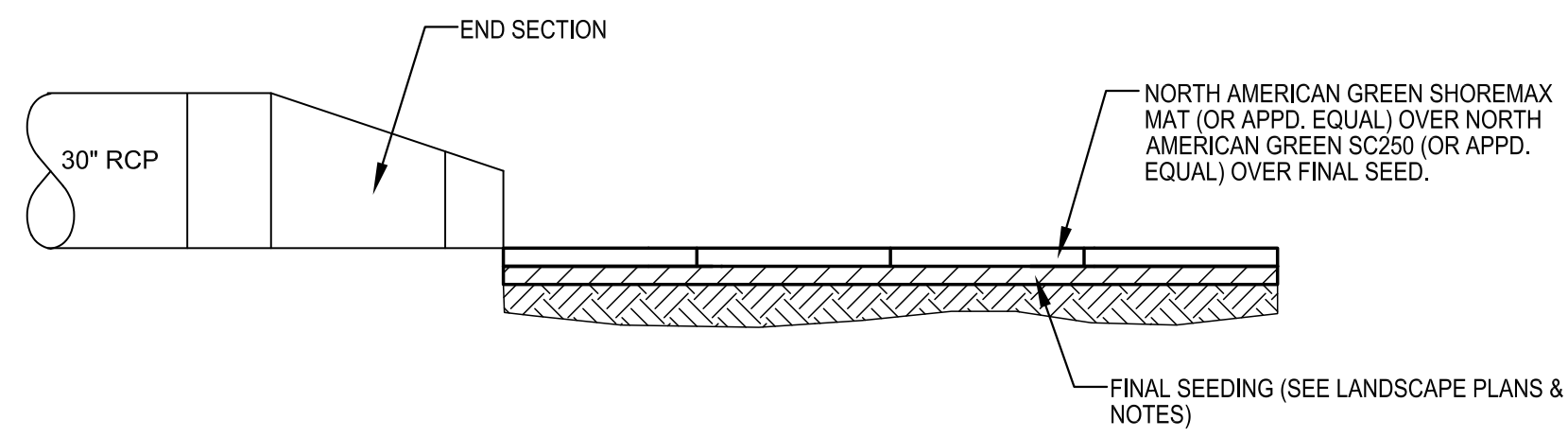
ORIGINAL CONTRACT DOCUMENTS

AS-BUILT PLANS - FEBRUARY 2017

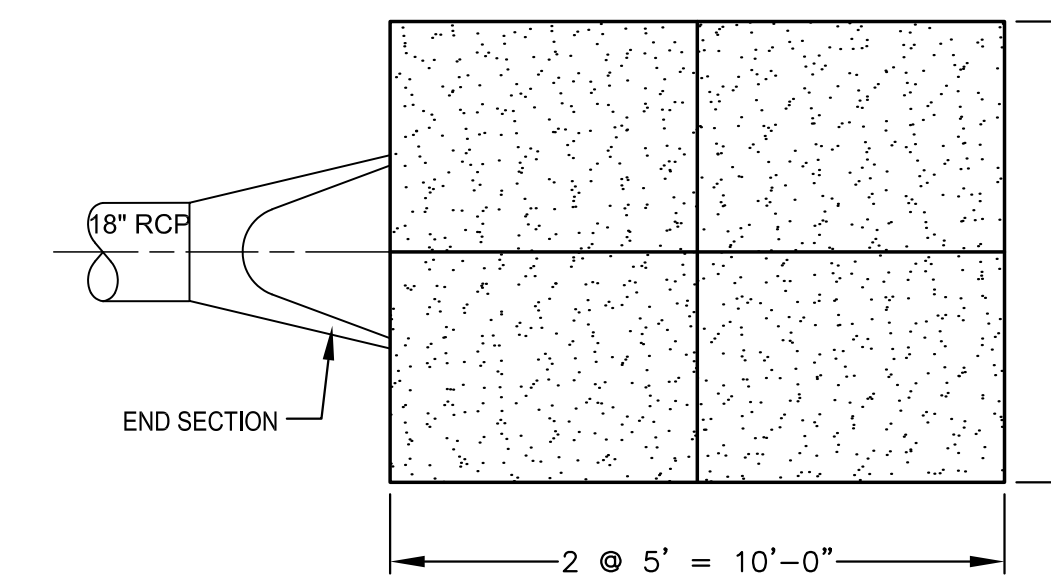
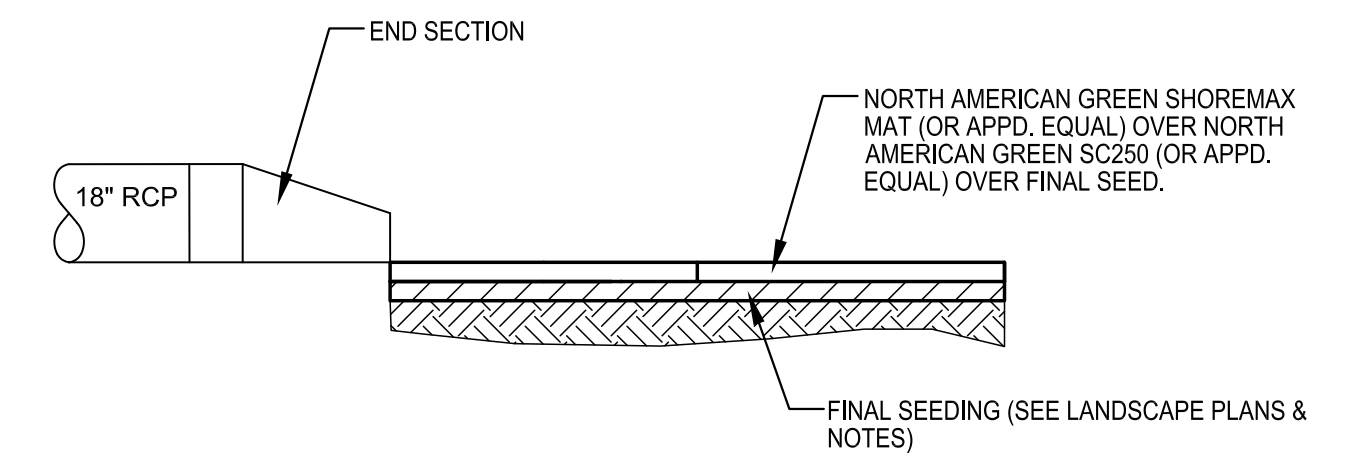
C.O.W. DETAIL #SW111

**NOTES:**

1. SHOREMAX TRANSITION MATS SHALL BE INSTALLED PER MANUFACTURER'S RECOMMENDATIONS.
2. ABUTTING MATS SHALL BE INTERCONNECTED TOGETHER.
3. ANCHOR MATS PER ANCHOR PATTERN "F" USING EARTH ANCHORS.



**01 LINE 2 OUTFALL**  
SCALE: NOT TO SCALE



**02 LINE 3 OUTFALL**  
SCALE: NOT TO SCALE

REVISION	DATE

DIVISION OF ADMINISTRATION & FINANCE  
FACILITIES PLANNING  
1845 FAIRMOUNT ST.  
WICHITA, KANSAS 67260-0047  
Phone 316-978-3030

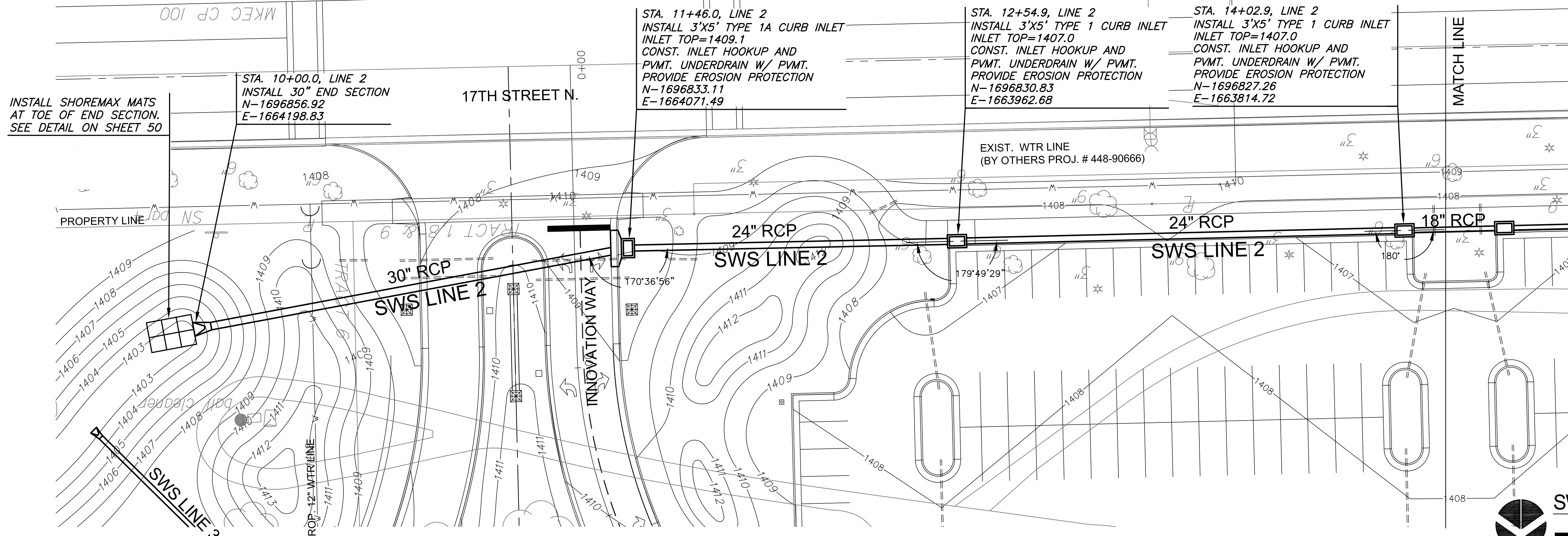
Department of Administration  
Office of Facilities & Procurement Management  
Design, Construction & Compliance  
800 SW Jackson, Suite 700  
Topeka, Kansas 66612-1216  
Phone 785-296-8899

WICHITA STATE UNIVERSITY  
17th ST. ENTRY DRIVE/PARKING  
1845 FAIRMOUNT ST.  
WICHITA, KANSAS 67260-0023  
DATE: 06/19/2015 DRAWN BY: DM CHECKED BY: MAB

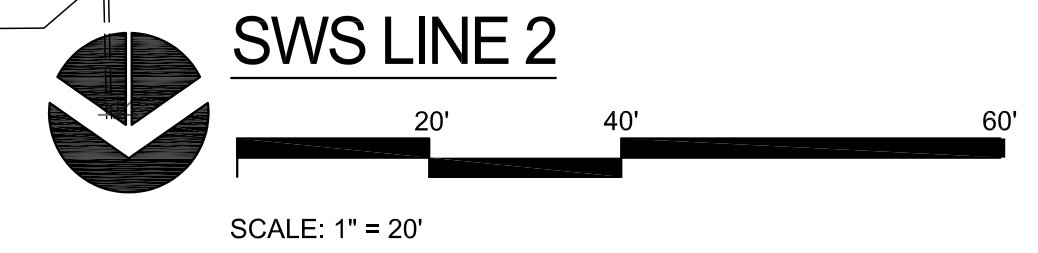


PLOTTED: Wednesday, March 01, 2017 04:43PM

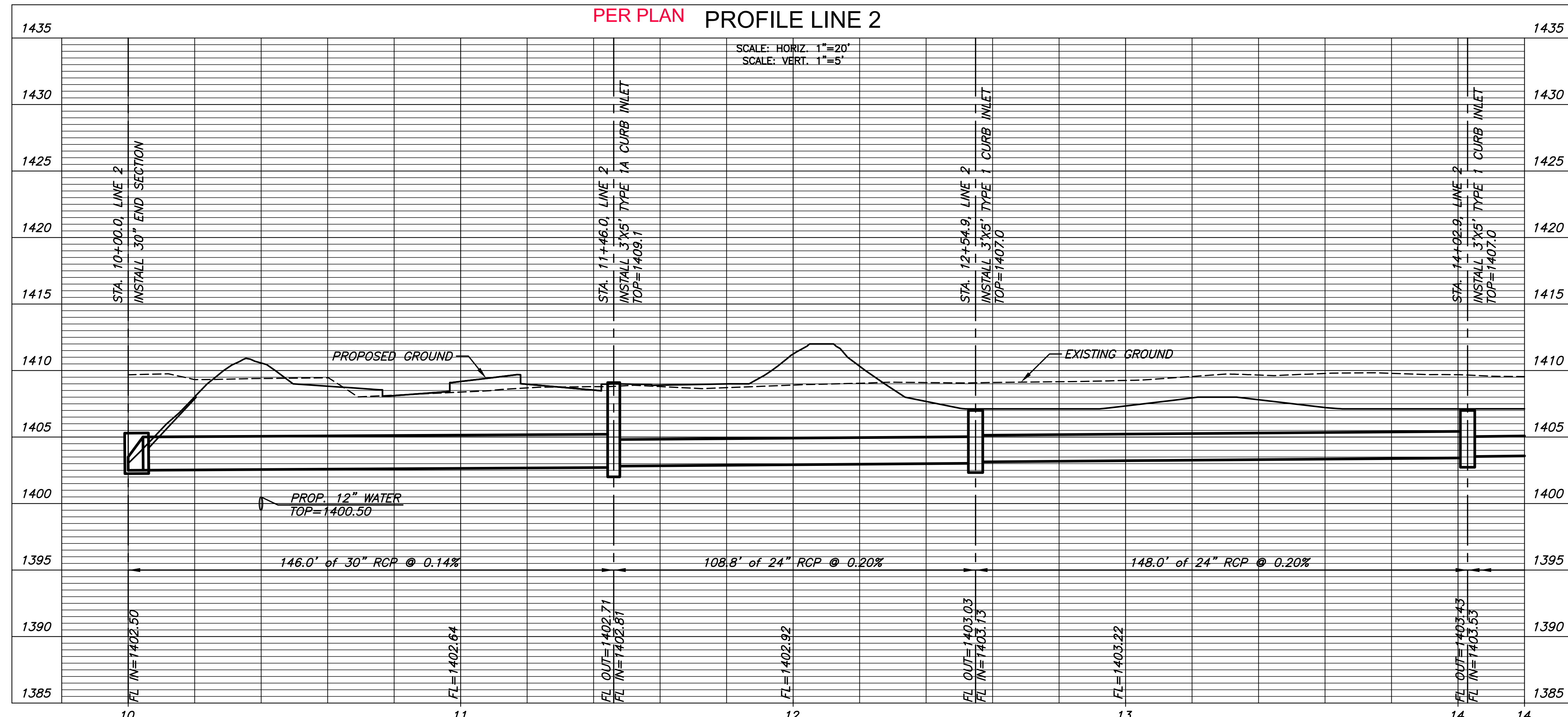
J:\PROJECTS\2015\1901010074\_KS DEPT ADMIN\_VSU\_17TH ST DR & PARKING LOT\_15974\_CADD\SHOTS\65 CIVIL\SW15974\_P42\_DPR2.DWG



AS-BUILT PLANS - FEBRUARY 2017



PER PLAN PLAN LINE 2  
PER PLAN PROFILE LINE 2



REVISION	DATE

DIVISION OF ADMINISTRATION & FINANCE  
FACILITIES PLANNING  
1845 FAIRMOUNT ST.  
WICHITA, KANSAS 67260-0047  
Phone 316-978-3030

Department of Administration  
Office of Facilities & Procurement  
Management  
Design, Construction & Compliance  
800 SW Jackson, Suite 700  
Topeka, Kansas 66612-1216  
Phone 785-296-8899

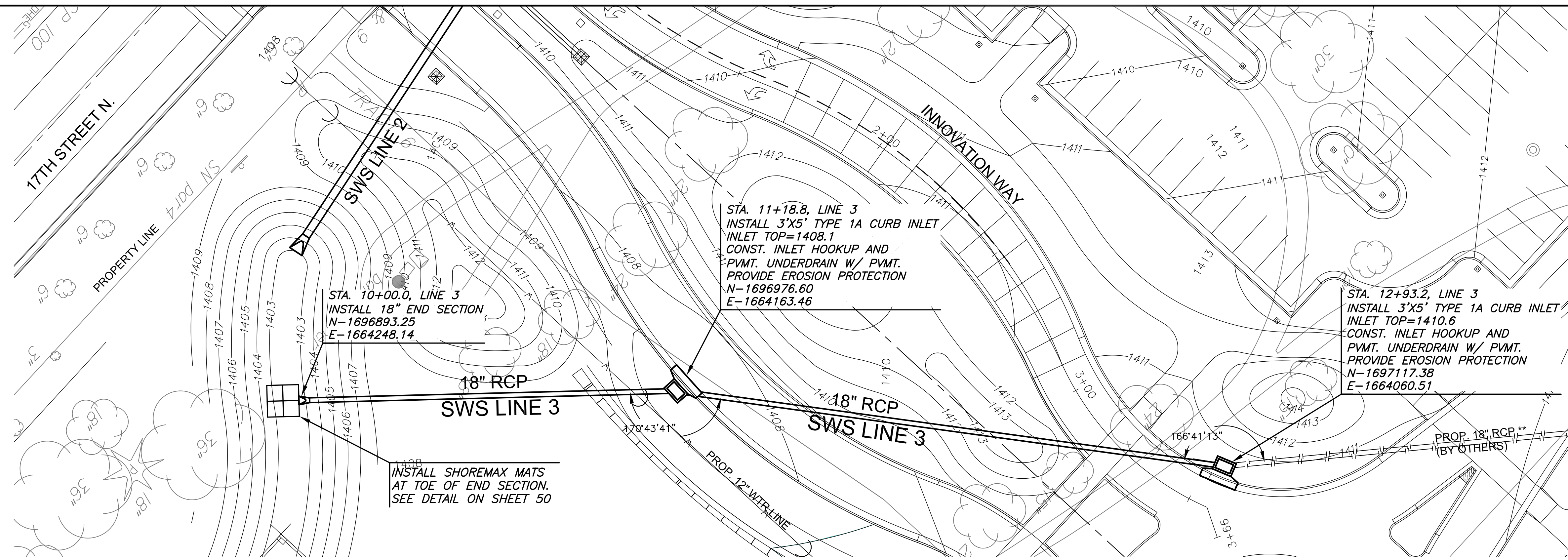
WICHITA STATE UNIVERSITY  
17th St. ENTRY DRIVE/PARKING  
1845 FAIRMOUNT ST.  
WICHITA, KANSAS 67260-0023  
DATE: 06/19/2015 DRAWN BY: SPE CHECKED BY: SPE

SWS LINE 2  
A-012680Rev  
52 OF 81  
ORIGINAL CONTRACT DOCUMENTS

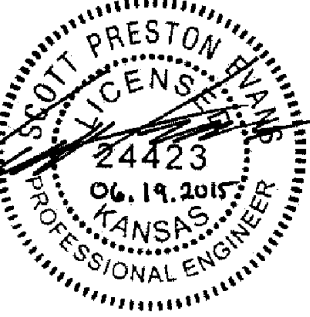


PLOTTED: Wednesday, March 01, 2017 @ 04:50PM

J:\PROJECTS\2017\1901010074\_KS DEPT ADMIN\_VSU\_17TH ST DR & PARKING LOT\_19074\_CADD\SHOTS\6 CIVIL\SW315074\_P12.DWG



\*\* PROP. 18" RCP BY SEPARATE CONTRACT (CITY OF WICHITA PRIVATE PROJECT NO. 0313PPD) COORDINATE W/ PARTNERSHIP BUILDING #1 CONTRACTOR.



REVISION	DATE

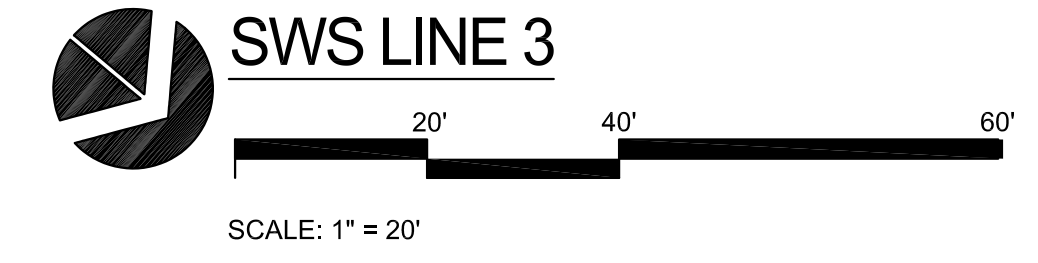
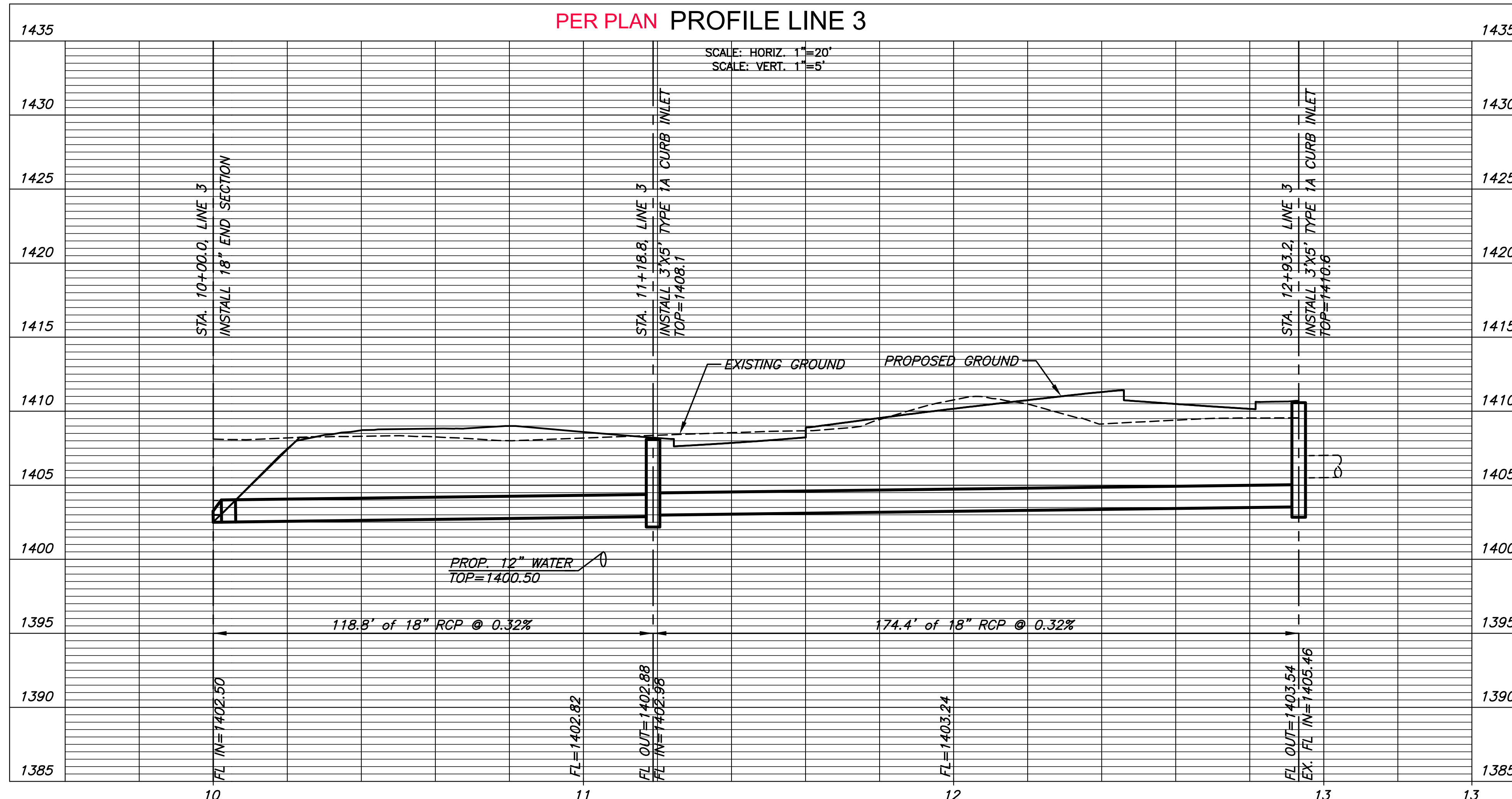
DIVISION OF ADMINISTRATION & FINANCE  
FACILITIES PLANNING  
1845 FAIRMOUNT ST.  
WICHITA, KANSAS 67260-0047  
Phone 316-978-3030

Department of Administration & Procurement  
Office of Facilities & Procurement Management  
Design, Construction & Compliance  
800 SW Jackson, Suite 700  
Topeka, Kansas 66612-1216  
Phone 785-296-8899

WICHITA STATE UNIVERSITY  
17th St. ENTRY DRIVE/PARKING  
1845 FAIRMOUNT ST.  
WICHITA, KANSAS 67260-0023  
DATE: 06/19/2015 DRAWN BY: SPE CHECKED BY: SPE

SWS LINE 3  
A-012680Rev  
54 OF 81  
ORIGINAL CONTRACT DOCUMENTS

PER PLAN PLAN LINE 3  
PER PLAN PROFILE LINE 3



AS-BUILT PLANS - FEBRUARY 2017

