

DSNR, BER OPER: JGA SCALE: 1"=300.00
 Q:\2002\02608\000\STRITILE 02-11-2003 10:57:39 am

SHEET NO.	TOTAL SHEETS
1	43

CITY OF WICHITA, KANSAS
NEIL D. CABLE, P.E., CITY ENGINEER

STREET IMPROVEMENTS

WHITE TAIL - SERVING LOTS 22 THRU 25, BLOCK 1 AND LOTS 8 THRU 10, BLOCK 2
TIPPERARY - SERVING LOT 46, BLOCK 1 AND LOTS 11 THRU 13, BLOCK 2
WHITE TAIL COURT - SERVING LOTS 26 THRU 31, BLOCK 1
TIPPERARY CIRCLE - SERVING LOTS 32 THRU 45, BLOCK 1
SIDEWALK - ON THE NORTH AND WEST SIDE OF TIPPERARY
AND THE SOUTH AND WEST SIDE OF WHITE TAIL

IN
BALTHROP 4TH ADDITION
CITY OF WICHITA PROJECT NO. 472-83469
OCA NO. 765759

INDEX OF SHEETS

1. TITLE SHEET
2. KEY MAP
3. PLAT
- 4.-5. TYPICAL SECTIONS
6. PAVING PLAN - WHITE TAIL
7. PAVING PLAN - WHITE TAIL/TIPPERARY
8. PAVING PLAN - TIPPERARY CIRCLE
9. PAVING PLAN - WHITE TAIL COURT
10. PAVING PLAN - WHITE TAIL "STUB"
11. VALLEY GUTTER PLANS
12. VALLEY GUTTER DETAILS
13. MISCELLANEOUS PAVING DETAILS
14. SWS LINE NO. 1
15. STD TYPE 1A CURB INLET (6"x5'-0")
16. STD 2"x2' AREA INLET DETAILS
17. CHANNEL GRADING
18. MANHOLE FRAME AND COVER DETAILS
- 19.-22. EROSION CONTROL (BMP'S)
23. FENCING PLAN AND DETAILS
24. FOUR CORNER GRADING PLAN
25. SIGNING DETAILS
- 26.-43. CROSS SECTIONS

PROJECT SURVEY CONTROL

- BM# E-2 - RAILROAD SPIKE IN NORTH FACE OF 12" HEDGE TREE SOUTH OF NORTH GAP IN EAST HEDGE ROW NEAR SOUTHEAST CORNER OF LOT 13, BLOCK 4 OF BALTHROP ADDITION. ELEV.= 1375.00
- BM# 4-2 - T POST SET 6"± BELOW SURFACE, 10"± SOUTH OF POINT OF CURVATURE OF CUL-DE-SAC LOT 30, BLOCK 1 OF BALTHROP 4TH ADDITION. ELEV.= 1365.265
- BM#1-21 - BRASS DISC SET AT PRC OF BRACKEN CIRCLE AND WHITE TAIL AT LOT 21, BLOCK 1 OF BALTHROP 4TH ADDITION. ELEV.= 1362.035
- BM#1-40 - T POST SET 6"± BELOW SURFACE, 5"± NORTH OF EAST-WEST BARBED WIRE FENCE NEAR THE SOUTHWEST CORNER LOT 40, BLOCK 1 OF BALTHROP 4TH ADDITION. ELEV.= 1357.720
- BM# 2-1 - CHISELED "d" ON CENTER FACE OF A CURB INLET ON NORTH SIDE OF TIPPERARY AT WHITE TAIL. ELEV.= 1358.365
- BM# F-2 - RAILROAD SPIKE IN SOUTH FACE OF 28" HEDGE TREE 36' WEST OF NORTHEAST CORNER, SW 1/4 SEC. 15, T27S, R2E. ELEV.= 1369.80 (RECORD)
ELEV.= 1369.790
- BM#1-37 - CHISELED "d" TOP SOUTH END OF RCP WEST OF THREE IN K-96 R/W NEAR NORTHEAST CORNER LOT 37, BLOCK 1 OF BALTHROP 4TH ADDITION. ELEV.= 1358.365

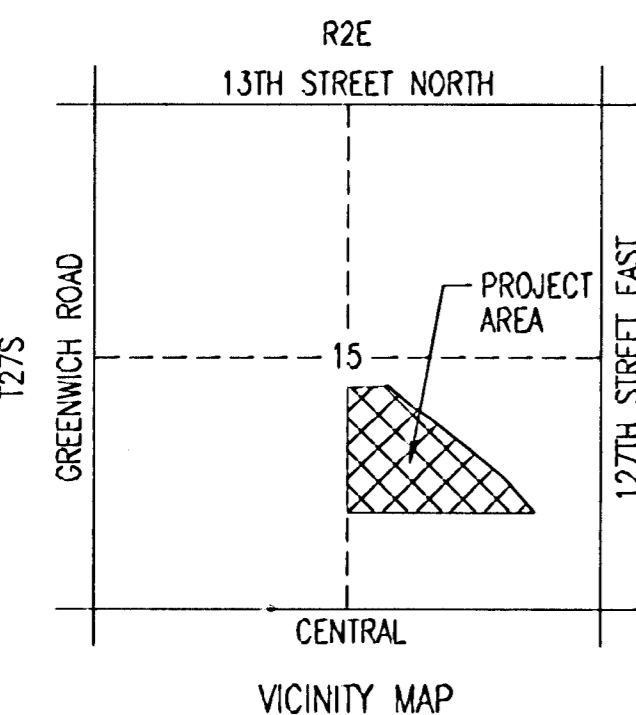
EARTHWORK

EXCAVATION 10,333 CU. YDS.
 COMPACTED FILL 1,221 CU. YDS.

PROJECT LENGTH = 1768.59 LIN. FT.

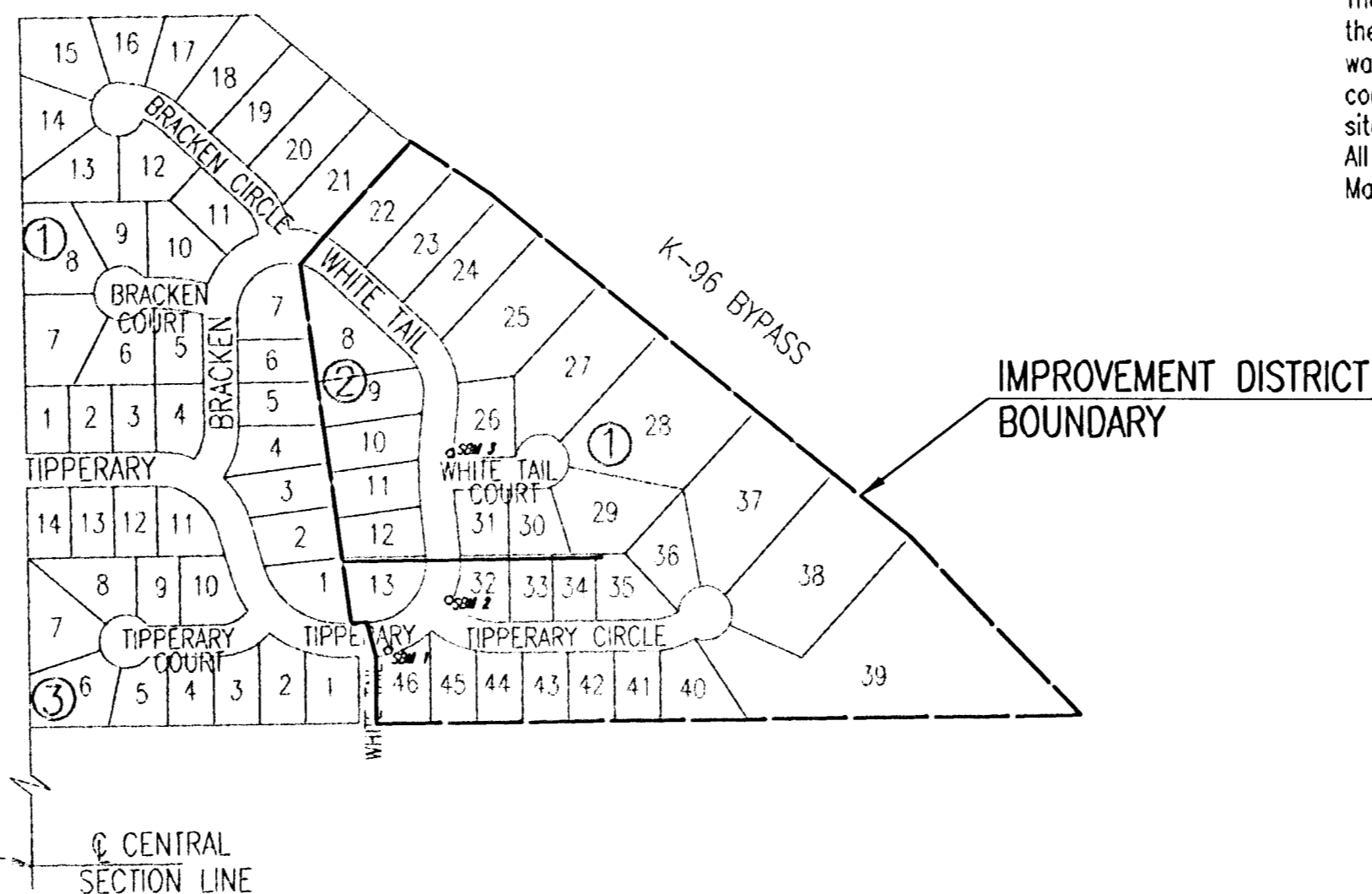
LOT GRADING WILL REQUIRE 15,065 C.Y. OF MATERIAL OF WHICH 6197 C.Y. SHALL BE CONTRACTOR FURNISHED BORROW FROM A SITE PROVIDED BY THE CONTRACTOR.

CONTRACTOR FURNISHED BORROW WILL BE A MEASURED QUANTITY AND MAY BE UNDER RUN AT THE ENGINEER'S DIRECTION.



S.W. Corner S.E. 1/4
 Sec. 15, T27S, R2E
 of the 6th P.M.

SCALE: 1" = 300'



The street contractor shall coordinate his work with both the sanitary sewer contractor (Proj. no 468-83554) and the water line contractor (Proj. no 448-89763) such that concurrent construction of the proposed storm sewer and site grading can be completed on or before March 28, 2003. All street construction shall be completed on or before May 2, 2003.

JANUARY 2003

PLANS PREPARED BY

PROFESSIONAL ENGINEERING CONSULTANTS, P.A.
ENGINEERS
WICHITA, KANSAS



NO.	STREET AND STATION	FROM &	DESCRIPTION	ELEVATION
1	© TIPPERARY STA. 18+24.33	17.5' RT	EAST END RETURN, SOUTH SIDE STREET	-----
2	© TIPPERARY STA. 19+56.46	17.5' RT	NORTH END RETURN, EAST SIDE STREET	-----
3	© WHITE TAIL STA. 22+19.26	17.5' RT	NORTH END RETURN, EAST SIDE STREET	-----

THE COST OF THE BENCH MARK DISC, INCLUDING INSTALLATION, SHALL BE INCIDENTAL TO THE CURB.

GENERAL NOTES

UNDERGROUND UTILITY SERVICE LINES AND OVERHEAD UTILITY POLE LINES ARE TO BE ADJUSTED AS NECESSARY BY OTHERS PRIOR TO CONSTRUCTION UNLESS THE PLANS SPECIFICALLY CALL FOR THEIR ADJUSTMENT BY THE CONTRACTOR. EXISTING UTILITIES AND THEIR LOCATION, AS SHOWN ON THE PLANS, REPRESENT THE BEST INFORMATION OBTAINABLE FOR DESIGN. LOCATION INFORMATION HAS BEEN OBTAINED FROM THE VARIOUS UTILITY COMPANIES AND IS EITHER FROM COMPANY RECORD DRAWINGS OR COMPANY PROVIDED FIELD LOCATIONS. THE CONTRACTOR WILL BE REQUIRED TO WORK AROUND EXISTING UTILITIES WITHIN THE RIGHT-OF-WAY WHICH DO NOT CONFLICT WITH PROPOSED CONSTRUCTION.

TREES AND SHRUBS IN PUBLIC RIGHT-OF-WAY WHICH ARE IN DIRECT CONFLICT WITH PROPOSED NEW CONSTRUCTION SHALL BE REMOVED BY THE CONTRACTOR WITH THE ENGINEER'S APPROVAL. TREES AND SHRUBS WHICH ARE NOT IN DIRECT CONFLICT WITH PROPOSED NEW CONSTRUCTION SHALL BE SAVED AND PROTECTED FROM DAMAGE.

RUBBLE FROM THE REMOVAL OF MISCELLANEOUS STRUCTURES SHALL BE DISPOSED OF ON SITES TO BE PROVIDED BY THE CONTRACTOR AND APPROVED AS NOTED BELOW.

ALL DISPOSAL SITES MUST BE APPROVED BY THE KANSAS DEPARTMENT OF HEALTH AND ENVIRONMENT. MATERIAL EITHER STOCKPILED OR DISPOSED OF IN A FLOOD PLAIN WOULD REQUIRE A KANSAS STATE BOARD OF AGRICULTURE PERMIT. ANY MATERIAL DUMPED IN WATERS OF THE UNITED STATES OR WETLANDS IS SUBJECT TO U.S. CORPS OF ENGINEERS PERMITTING REGULATIONS. ANY MATERIAL BURIED OR STOCKPILED BEYOND APPROVED CONSTRUCTION LIMITS WOULD REQUIRE ADDITIONAL ARCHEOLOGICAL INVESTIGATIONS UNLESS BURIED IN A PREVIOUSLY APPROVED BORROW LOCATION.

CONTRACTOR SHALL SATISFY HIMSELF OF SURFACE AND SUBSURFACE CONDITIONS PRIOR TO BIDDING.

TEMPORARY SURFACING MATERIAL (ROCK, ASPHALT, ETC.) MAY HAVE BEEN PLACED WITHIN STREET RIGHTS-OF-WAY FOR HAUL ROADS AND TEMPORARY ACCESS. CONTRACTOR SHALL FIELD VERIFY EXISTING CONDITIONS TO DETERMINE EXTENT, IF ANY, OF SUCH SURFACING. CONTRACTOR SHALL REMOVE SAID TEMPORARY SURFACING IN THE SAME MANNER AS NOTED ABOVE FOR RUBBLE. THIS REMOVAL SHALL BE SUBSIDIARY TO "EXCAVATION".

CONTRACTOR SHALL PROVIDE A MINIMUM FORTY-EIGHT (48) HOUR ADVANCE NOTICE (EXCLUDING WEEKENDS AND HOLIDAYS) PRIOR TO BEGINNING ANY EXCAVATION, TO KANSAS ONE-CALL SYSTEM, A UTILITY LOCATION SERVICE, AT (316) 687-2470 TO REQUEST THE FOLLOWING UTILITY COMPANIES TO LOCATE ALL EXISTING LINES WITHIN THE PROJECT AREA: K.G.S. GAS, PEOPLES NATURAL GAS, WESTAR ENERGY, SOUTHWESTERN BELL TELEPHONE, COX COMMUNICATIONS, CITY OF WICHITA SEWER MAINTENANCE AND CITY OF WICHITA WATER DEPARTMENT.

THE CONTRACTOR SHALL BE RESPONSIBLE FOR PRESERVING PROPERTY IRONS. THE CONTRACTOR WILL BE REQUIRED TO RE-ESTABLISH ANY PROPERTY IRONS WHICH ARE DAMAGED OR DESTROYED BY HIS CONSTRUCTION OPERATIONS. SUCH IRONS SHALL BE RE-ESTABLISHED BY A LICENSED LAND SURVEYOR IN ACCORDANCE WITH STATE LAWS.

THE WATER DEPARTMENT SHALL FIELD LOCATE WATER VALVES ONE TIME DURING CONSTRUCTION WHEN REQUESTED BY THE CONTRACTOR. IT SHALL BE THE CONTRACTOR'S RESPONSIBILITY TO PRESERVE SUCH FIELD LOCATIONS DURING THE CONSTRUCTION PROCESS. WATER VALVES, WATER VALVE BOXES OR FIRE HYDRANTS DAMAGED DURING CONSTRUCTION SHALL BE REPAIRED BY THE CONTRACTOR AT HIS OWN EXPENSE.

THE CONTRACTOR SHALL ADJUST WATER VALVE BOXES AS DIRECTED BY THE ENGINEER. THIS WORK TO BE SUBSIDIARY TO OTHER BID ITEMS.

INLET HOOKUPS SHALL BE BID PER EACH REGARDLESS OF INLET SIZE.

THIS PROJECT DOES NOT INCLUDE ANY PROVISIONS FOR CONSTRUCTION OF DRIVEWAYS.

THE CONTRACTOR SHALL APPLY TEMPORARY SEED AND MULCH TO ALL UNPAVED AREAS DISTURBED BY HIS CONSTRUCTION OPERATIONS IN ACCORDANCE WITH THE CITY OF WICHITA SPECIFICATIONS. THIS WORK SHALL BE PAID FOR AT THE CONTRACT LUMP SUM PRICE BID FOR "TEMPORARY SEEDING".

THE CONTRACTOR SHALL APPLY PERMANENT SEED, FERTILIZER, AND MULCH TO THE STREET RIGHT-OF-WAYS, AND UTILITY EASEMENTS IN ACCORDANCE WITH STANDARD SPECIFICATIONS. SEED SHALL BE K-31 FESCUE APPLIED AT THE RATE OF 350 LBS. PER ACRE. FERTILIZER SHALL BE 12-24-12 APPLIED AT THE RATE OF 350 LBS. PER ACRE. MULCH SHALL BE PRAIRIE HAY APPLIED AT THE RATE OF 15 BALES PER ACRE. THIS WORK SHALL BE PAID FOR AT THE CONTRACT PRICE BID PER ACRE FOR "PERMANENT SEEDING".

EROSION CONTROL (BMP'S)
 THE CONTRACTOR SHALL INSTALL AND/OR MAINTAIN EROSION CONTROL METHODS AS SPECIFIED ON SHEET 30. THE FOLLOWING QUANTITIES ARE ESTIMATED, AND SHOULD BE CONSIDERED THE MINIMUM EFFORT REQUIRED. INSTALLATION OF THESE BMP'S DOES NOT RELIEVE THE CONTRACTOR OF THE RESPONSIBILITY OF ABATING SOIL EROSION.

- INLET PROTECTION 4 EACH
- SILT FENCE BARRIER 1100 LF
- CONSTRUCTION ENTRANCE 1 EACH
- BACK OF CURB PROTECTION 3650 LF

LOT GRADING AND COORDINATION
 THE CONTRACTOR SHALL BE REQUIRED TO WORK AROUND HOUSE CONSTRUCTION CURRENTLY UNDERWAY AND COORDINATE WITH THE HOME BUILDERS AND DEVELOPER ON ACCESS AND LOT GRADING ISSUES.