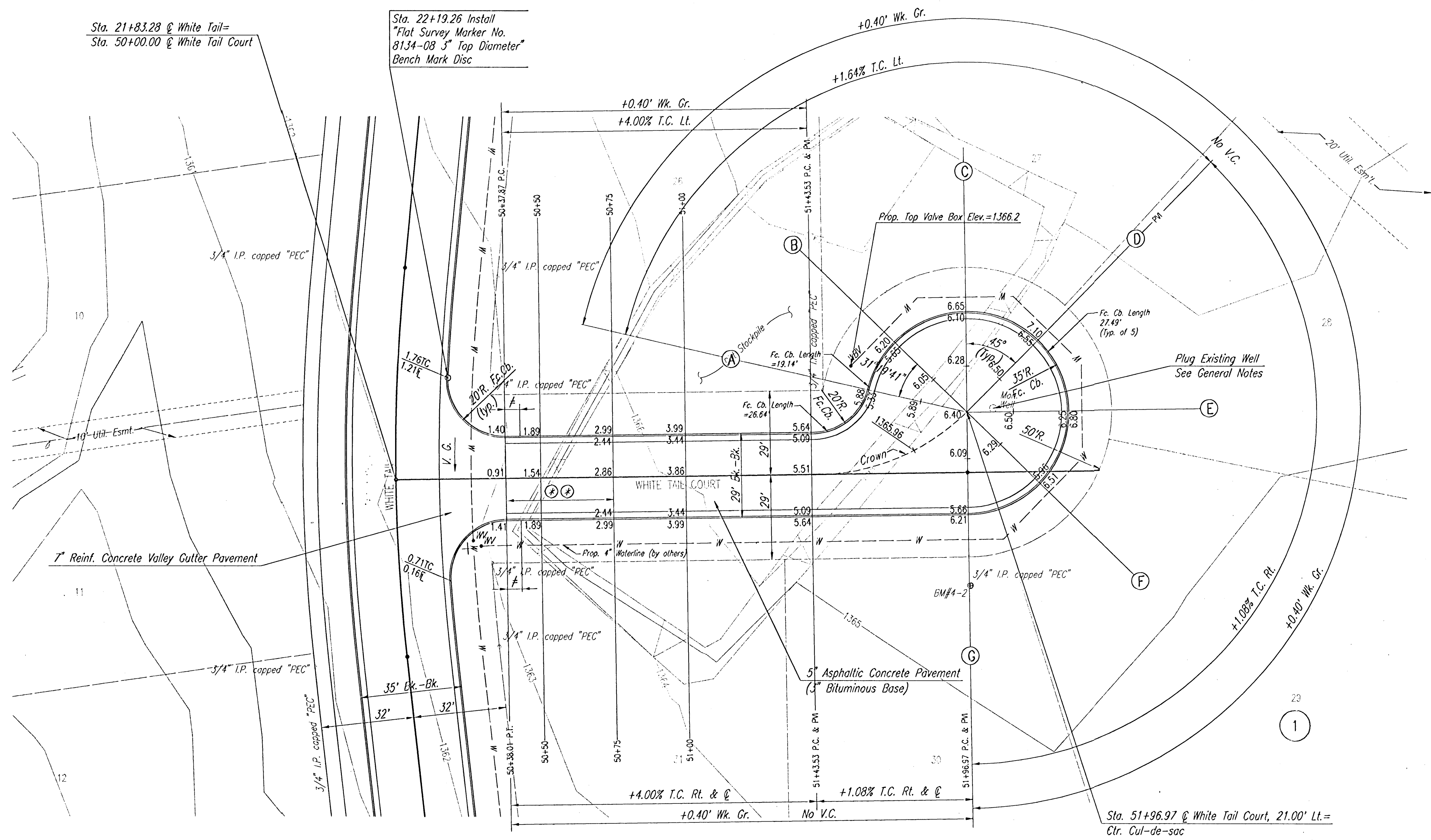


WATER VALVE BOX ELEVATIONS			
STREET	STATION	OFFSET	PROPOSED ELEVATION
WHITE TAIL	21+59.00	28.62' Lt.	1361.2
WHITE TAIL	21+61.08	26.00' Lt.	1361.1



Sta. 21+83.28 @ White Tail =
Sta. 50+00.00 @ White Tail Court

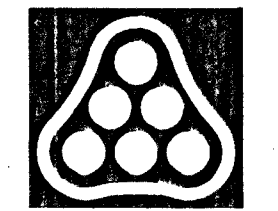
Sta. 22+19.26 Install
Flat Survey Marker No.
8134-08 3" Top Diameter
Bench Mark Disc

Sta. 51+96.97 @ White Tail Court, 21.00' Lt. =
Ctr. Cul-de-sac

- ⊘ 5' TRANSITION FROM COMBINED CURB AND GUTTER 3 5/8" ROLL & 1 1/2" TO COMBINED CURB AND GUTTER (6 5/8" & 1 1/2"). TO BE BID AND AID FOR AS COMBINED CURB AND GUTTER (3 5/8" ROLL & 1 1/2").
- ⊘ TRANSITION FROM NO CROWN TO NORMAL CROWN (3/8"/FT. X-SLOPE)

NOTE: THIS STREET TO BE CONSTRUCTED WITH ROLL-TYPE CURB. TOP OF CURB ELEVATIONS GIVEN ARE FOR FULL HEIGHT CURB.

DSNR: BER OPER: JCA SCALE: 1"=20.00
 Q:\2002\02608\000\W TAIL CT 50-51 02-10-2003 10:13:27 am



No.	Revision	By	Date
CITY OF WICHITA, KANSAS NEIL D. CABLE, P.E. - CITY ENGINEER BALTHROP 4TH ADDITION - PHASE 2 WHITE TAIL COURT STA. 50+00.00 TO STA. 51+96.97 CITY OF WICHITA PROJECT NO. 472-83469			
Professional Engineering Consultants, P.A. 303 S. TOPEKA • WICHITA, KANSAS 67202 316-262-2691 • FAX 316-262-3093			
Designed by	BER	Job No.	35-02608-0
Drawn by	JCA	Date	January 2003
			Sht. 9 of 43