

Street Paving For LOST CREEK

to serve

LIBERTY PARK 3RD ADDITION - PHASE 2C

Lost Creek from the west line of Lot 38, Block C, Liberty Park 3rd, east to 64.5' east of the west line of Lot 46, Block C, Liberty Park 3rd
 Liberty from 45.98' north of the south line of Lot 3, Block B, Liberty Park 3rd, north to the south line of Lot 52, Block C, Liberty Park 3rd
 Liberty Cir. from the south line of Lot 52, Block C, Liberty Park 3rd, north to and including the cul-de-sac
 Harvest Lane from west line of Lot 52, Block C, Liberty Park 3rd, east to 5' east of the east line of Lot 52, Block C, Liberty Park 3rd.

CITY OF WICHITA, KANSAS

Gary Janzen, P.E. City Engineer

Project Number

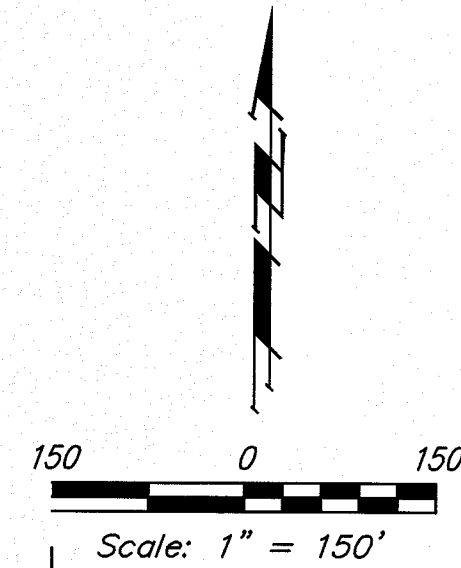
472-85140

O.C.A. Number

766376

GENERAL NOTES:

- Contractor will be required to provide notice to utility companies a minimum of forty-eight (48) hours prior to any excavation, as follows:
 Kansas One-Call 687-2470
 The Contractor must notify the following in case of an emergency:
 Cox Communications 262-4270
 Kansas Gas Service 1-888-482-4950
 Westar Energy 383-8650
 Aquila Energy 1-800-303-0357
 AT&T 268-2245
 City of Wichita Water Dept. 268-4563
 City of Wichita Sewer Maint. 268-4024
 City of Wichita Storm Sewer Maint. 268-4090
 City of Wichita Traffic Maint. 268-4034
 Conoco Phillips Pipeline Co. 1-877-267-2290
 Southern Star Pipeline Co. 529-6600
 Kinder-Morgan Pipeline Co. 1-888-844-5658
- Utility service lines, poles, valve boxes, meters, and etcetera are to be adjusted as necessary by others prior to construction unless the plans specifically call for their adjustment by the Contractor or unless the plans specifically identify a utility to be adjusted by its owner during construction. Existing utilities and their location, as shown on the plans, represent the best information obtainable for design. The Contractor will be required to work around existing utilities within the right-of-way which do not conflict with proposed construction.
- Rubble from the removal of miscellaneous structures and excess excavation which is to be wasted shall be disposed of on sites to be provided by the Contractor. These sites shall be approved by the Engineer as to suitability, appearance and site location. Locations, in the opinion of the Engineer, that will leave an unsightly appearance will not be approved. All disposal sites must be approved by the Kansas Department of Health and Environment. Material either stockpiled or disposed of in a flood plain would require a Kansas State Board of Agriculture permit. Any material dumped in waters of the United States or wetlands is subject to U.S. Corps of Engineers permitting regulations. Any material buried or stockpiled beyond approved construction limits would require additional archaeological investigations unless buried in a previously approved borrow location.
- Trees and shrubs in public right-of-way which are in direct conflict with proposed new construction shall be removed by the Contractor with the Engineer's approval. Trees and shrubs which are not in direct conflict with proposed new construction shall be saved and protected from damage.
- The Contractor shall give all property owners and/or tenants of developed property abutting the construction of this project a minimum of ten (10) days notice prior to start of construction.
- The Contractor shall be responsible for preserving property irons. The Contractor will be required to re-establish any property irons which are damaged or destroyed by his construction operations. Such irons shall be re-established by a licensed land surveyor in accordance with state laws.
- All existing and proposed erosion control measures including silt fencing, erosion control mat, straw bales, inlet barriers, and const. entrance shall be maintained throughout construction by the contractor and until project is accepted by the City of Wichita. The on-site engineer shall complete weekly reports on the status of erosion control measures. The contractor shall be required to comply with maintenance and/or replacement of erosion control measures as determined by the on-site engineer until project is accepted by City of Wichita. Maintenance and/or replacement of erosion control measures to be paid by L.S. bid item "Maintain Existing BMP's."
- A saw cut of at least one-half the depth of existing surface courses or one-fourth the depth of the existing total pavement thickness shall be provided at locations where proposed construction abuts the existing surface course or pavement for which partial removal of that surface or pavement is required. Sawed joint to facilitate removal within three (3) feet of existing joints will not be permitted and for such instances the limits of removal shall extend to the existing joint. Such saw cuts will not be paid for directly and this cost shall be considered as subsidiary to the removal of the surface or pavement.
- All areas disturbed during construction shall be seeded as follows (Temporary Seeding):
 Seed: Rye grass (PLS)--5 lbs./1000 Sq. Ft.
 All costs associated with seeding shall be included in bid item "Seeding". All seeding operations shall conform to City of Wichita Standard Specifications.
- The Contractor shall adjust valve boxes as necessary to match proposed grade. Cost to be included in bid item, "Site Restoration."
- Limits of earthwork shall match existing ground elevations at the right-of-way line unless otherwise noted on the plans with a new finished grade elevation. When a new finished grade elevation is shown, the earthwork shall extend one foot beyond the right-of-way line and then slope up or down using permissible slopes to match the existing ground surface.
- The Developer for this project is Paul E. Kelsey (316)722-1077.

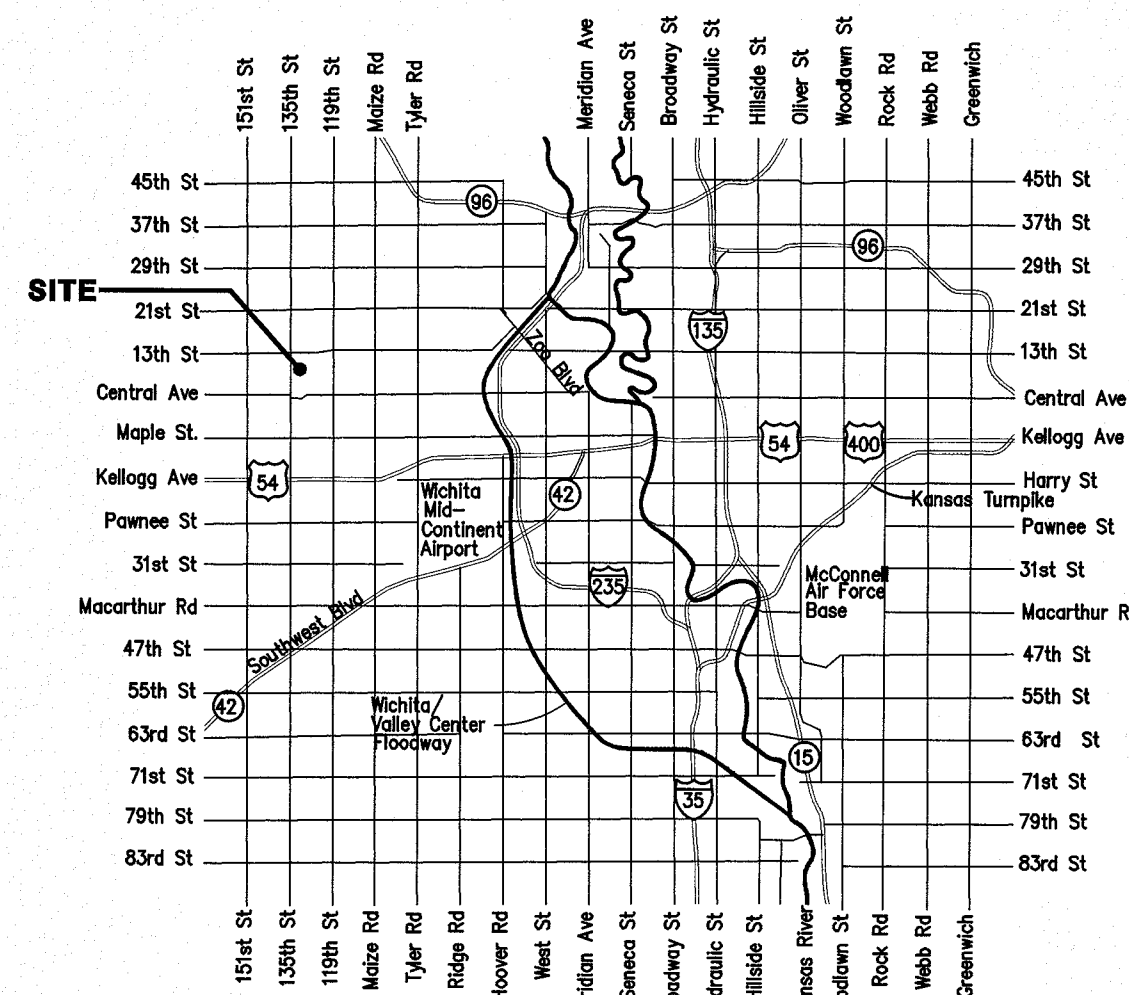


SHEET INDEX

Title Sheet	1
Asphalt Paving Detail	2
Curb & Gutter Details	3
Sign Details	4
Valley Gutter Details	5
Lost Creek	6-7
Liberty & Liberty Cir.	8
Liberty	9
Harvest Lane	10
Erosion Control Plan	11
Erosion Control BMP Details	12-16
Cross Sections	17-20
Coordinate Sheet	21
Copy of Plat	22

BENCHMARKS

- "□" Cut in top of curb 10' west of end of existing pavement adjacent to Lot 37, Block C, Liberty Park 3rd Addition
 Elev. = 168.20 (City Datum)
- "□" Cut in top of curb 10' east of end of existing pavement adjacent to Lot 52, Block C, Liberty Park 3rd Addition
 Elev. = 164.21 (City Datum)
- C.O.W. Benchmark Disk. 56' E and 55' N of Q 135th St. W. & 13th St. N.
 Elev. = 167.83 (City Datum)
- C.O.W. Benchmark Disk. 1/2 mile south of 13th St. 39' east of Q 135th St. 18' south of hedge row.
 Elev. = 159.71 (City Datum)

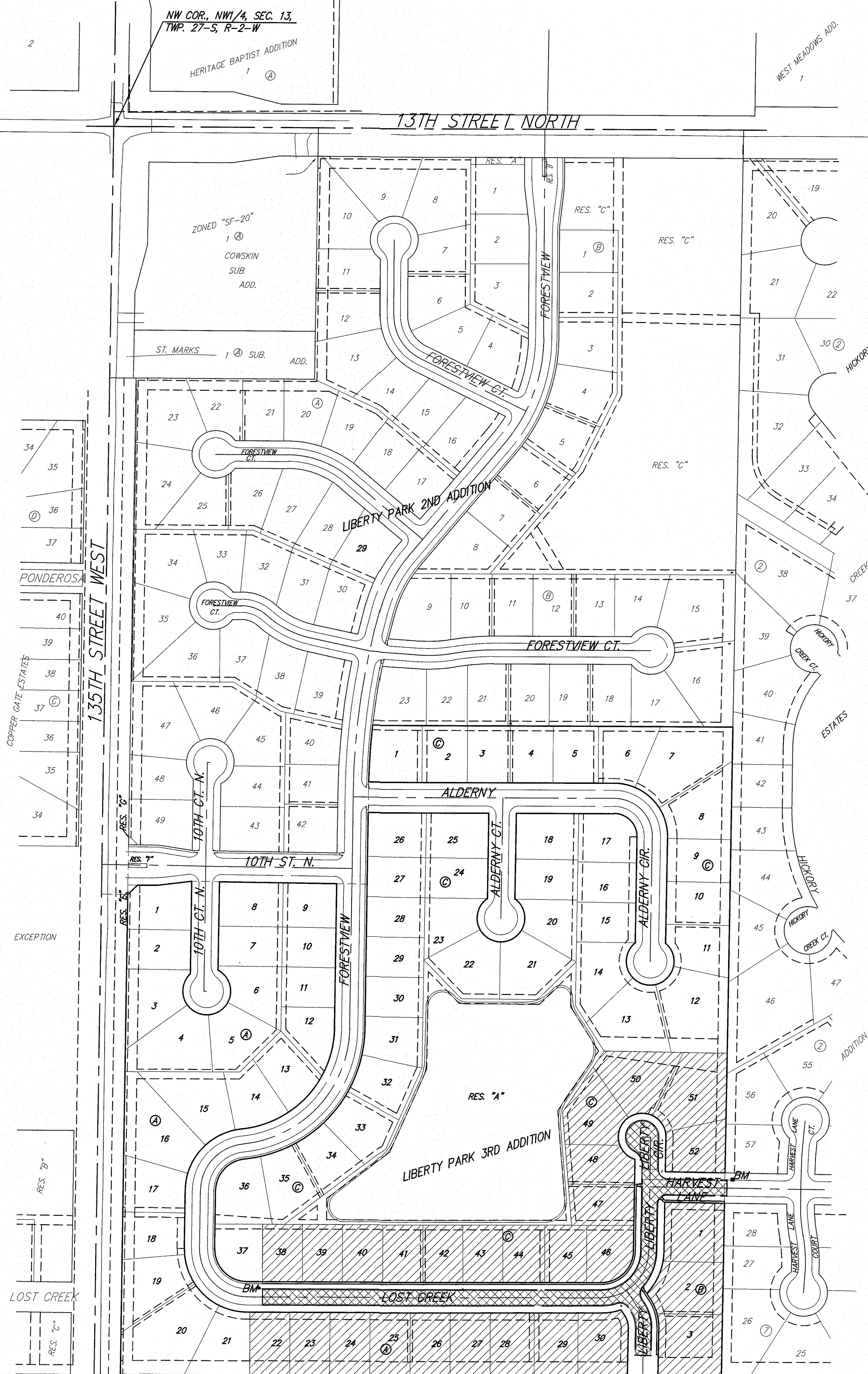


Vicinity Map

Street R/W's	Project Earthwork Totals (Cubic Yards, Unadjusted)		
	Excavation	Loose Fill**	Compacted Fill
Excavations*	2,624	262	109
TOTAL:	3,002	2,090	109

Total Project Length
 1,381.4 L.F. = 0.26 Miles

**Not a Bid Item
 * For Information Only. All costs associated with easement grading to be included in L.S. bid item "Easement Grading"



BENEFIT DISTRICT

PROPOSED PAVEMENT



Baughman Company, P.A. 315 Ellis St. Wichita, KS 67211 P 316-262-7271 F 316-262-0148

ENGINEERING | SURVEYING | PLANNING | LANDSCAPE ARCHITECTURE