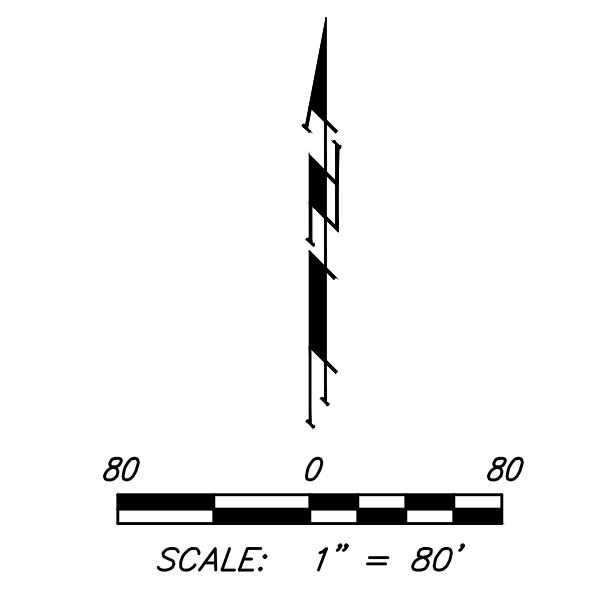
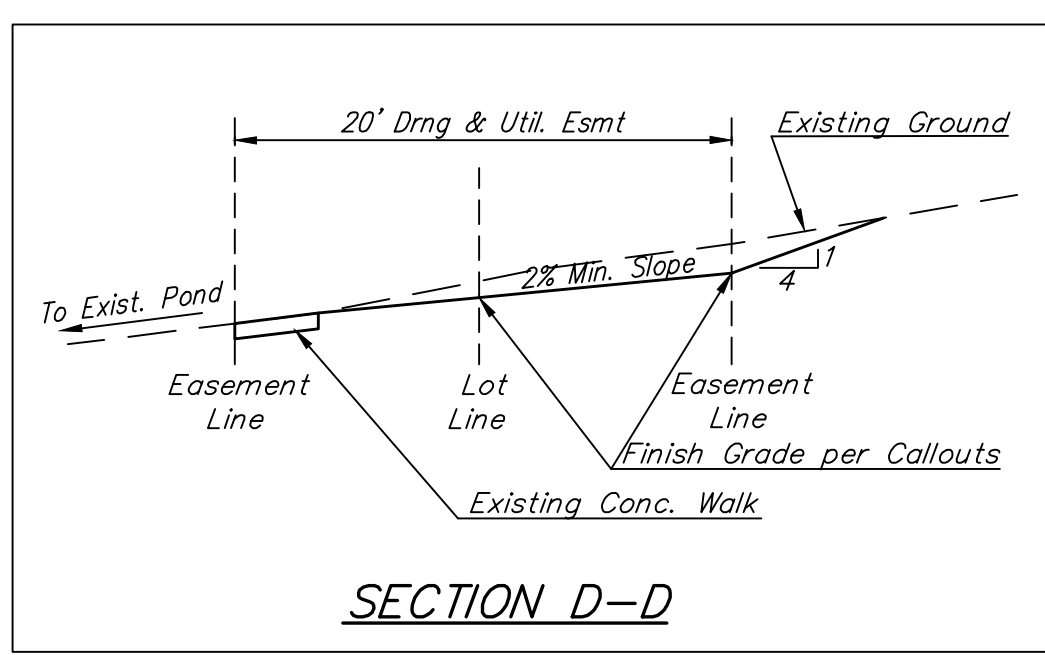
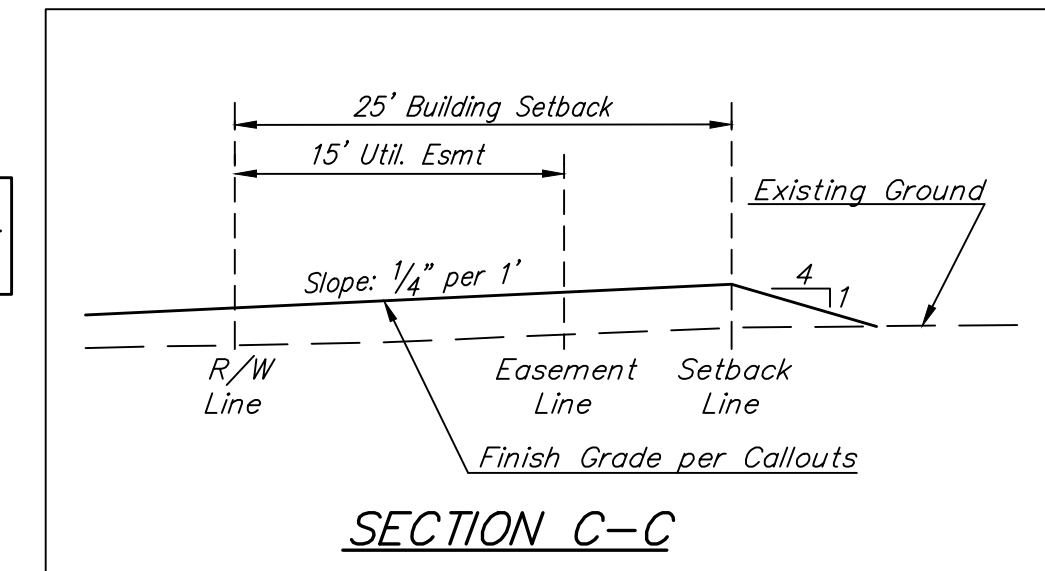
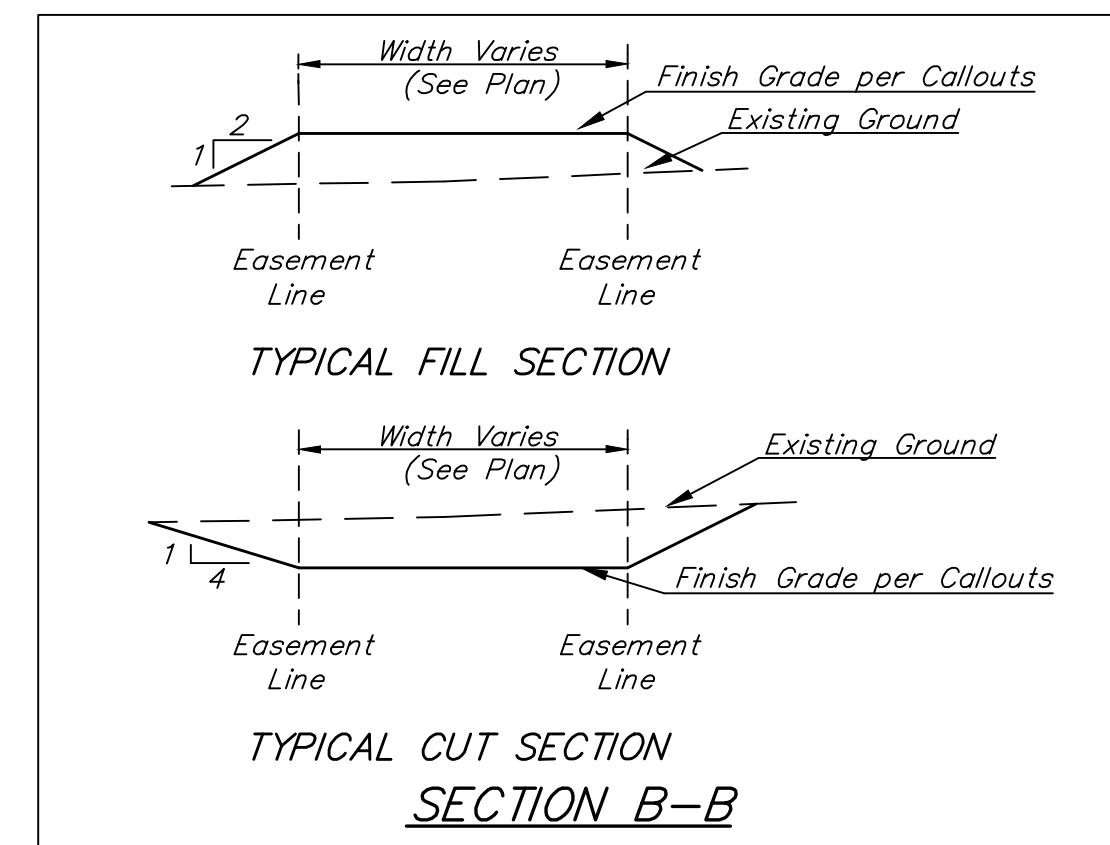
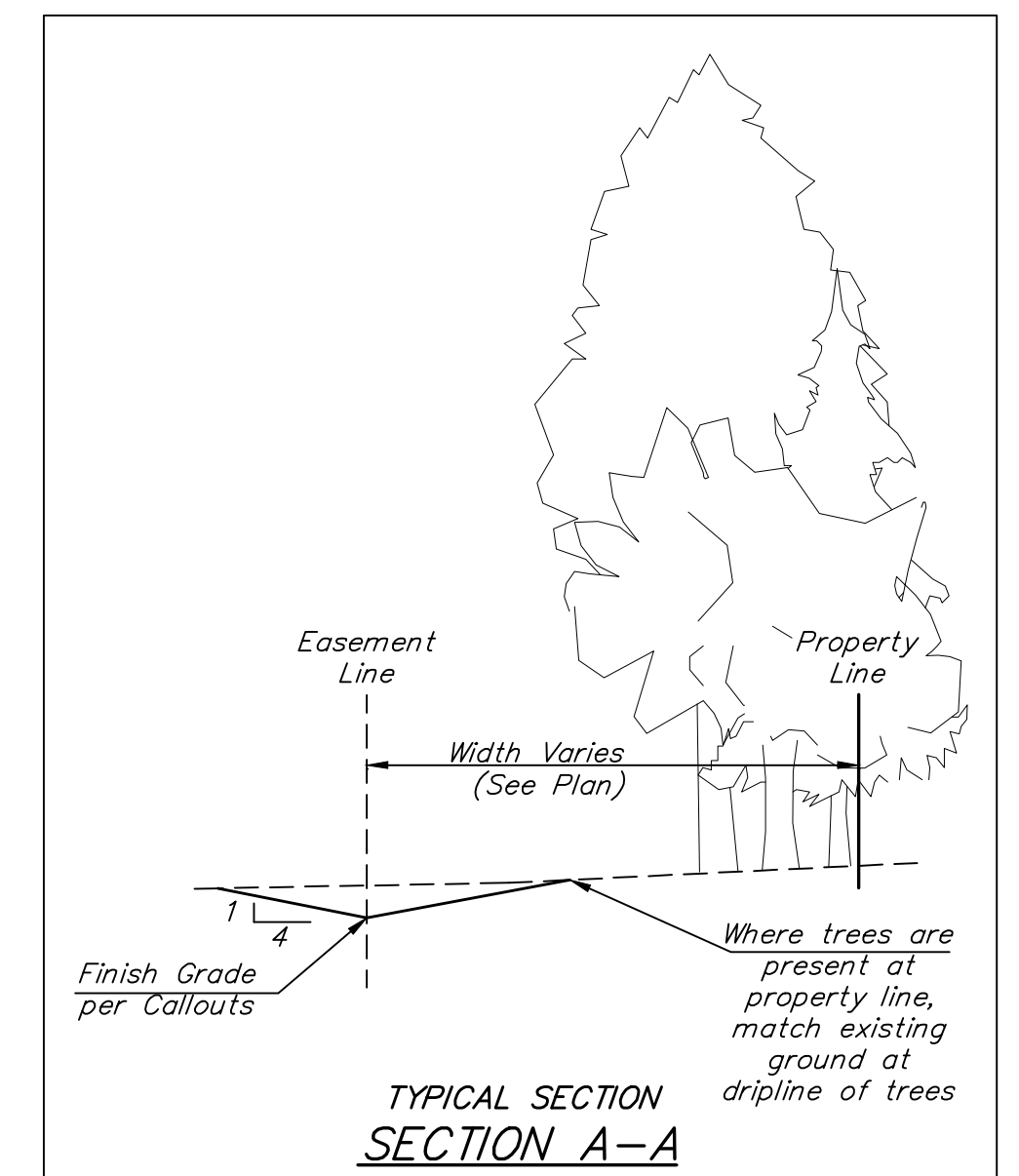
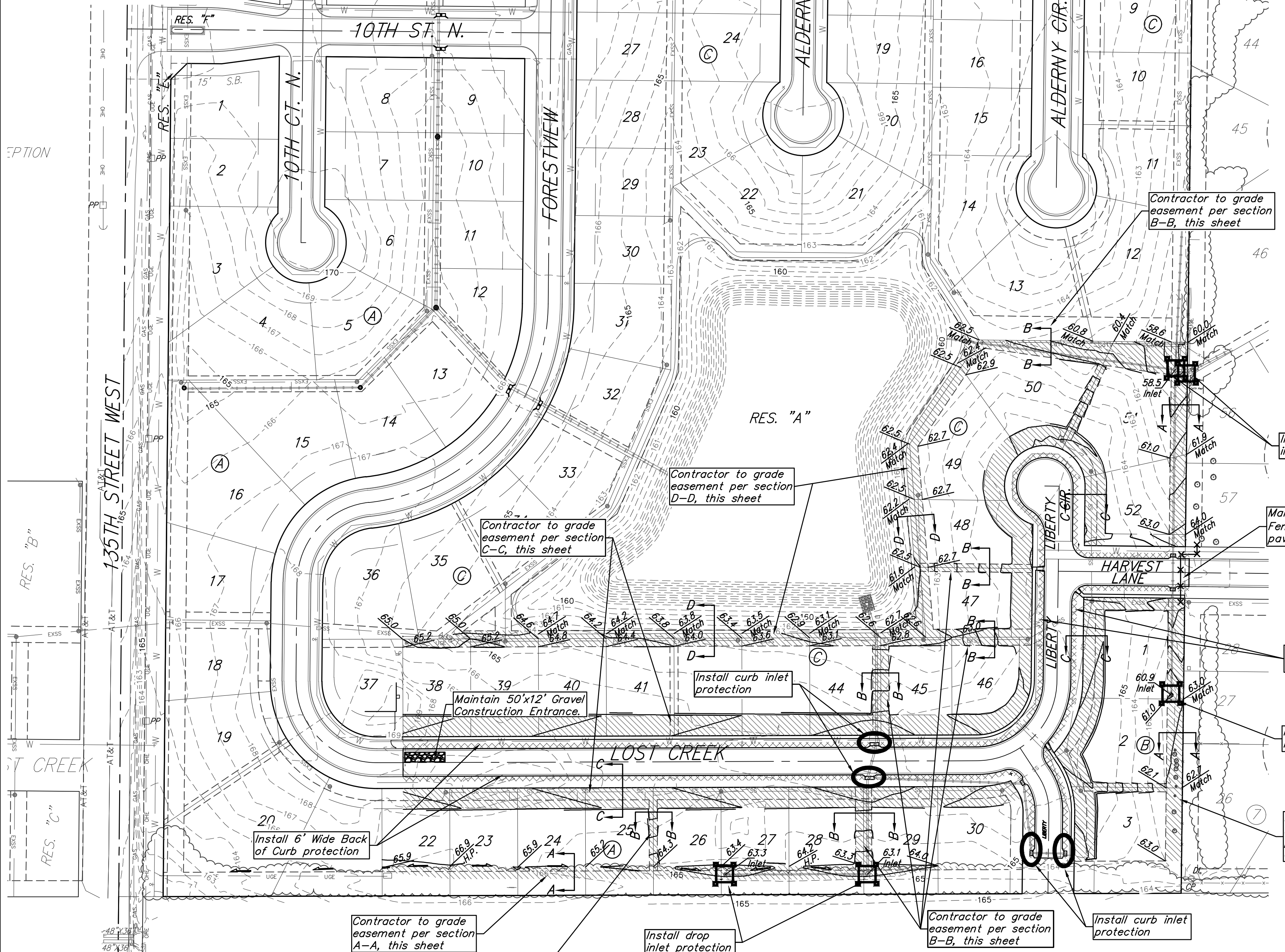


BENCHMARKS:
 "□" Cut in top of curb 10' west of end of existing pavement adjacent to Lot 37, Block C, Liberty Park 3rd Addition
 Elev. = 168.20 (City Datum)
 "□" Cut in top of curb 10' east of end of existing pavement adjacent to Lot 32, Block C, Liberty Park 3rd Addition
 Elev. = 164.21 (City Datum)
 C.O.W. Benchmark Disk. 56' E and 55' N of \odot 135th St. W. & 13th St. N.
 Elev. = 167.83 (City Datum)
 C.O.W. Benchmark Disk. 1/2 mile south of 13th St. 39' east of \odot 135th St. 18' south of hedge row.
 Elev. = 159.71 (City Datum)



EROSION CONTROL PLAN LEGEND

- DROP INLET PROTECTION
- CURB INLET PROTECTION
- SILT FENCING
- BACK OF CURB PROTECTION

= Easements To Be Graded
 Approximate Easement Grading Quantities:
 (For Information Only)
 Excavation: 378 C.Y.
 Fill: 2,090 C.Y.

- EASEMENT GRADING NOTES:**
- The Contractor shall grade the easements as shown to the elevations given on the easement grading plan.
 - The Contractor shall 'straight' grade the easements between the elevations given. Where a callout designates 'Match', the Contractor will grade to the existing ground elevation.
 - Excess excavation from easement grading & street construction shall be spread evenly on the lots outside of easements & right-of-ways.
 - All cost to be included in the Lump Sum bid item "Easement Grading"
 - This Plan Is Not To Be Used As A Comprehensive Grading Plan. All Spot Elevations Are Proposed & Subject To Change.

- EROSION CONTROL NOTES:**
- Contractor shall make sure all erosion control is in place before project is accepted. This plan represents the minimum standard. Any additional erosion control measures shall be installed by the Contractor as needed.
 - Removal of Gravel Construction Entrance for pavement construction shall be included in bid item "Site Restoration"
 - All areas disturbed during construction shall be seeded, mulched, and fertilized as per Cover Sheet General Notes.

EROSION CONTROL MEASURE	INSTALL	MAINTAIN
BACK OF CURB PROTECTION (LF)	2,791	0
CONSTRUCTION ENTRANCE (EA)	0	1
CURB INLET BARRIER (EA)	4	0
DITCH CHECK (EA)	0	0
DROP INLET PROTECTION (EA)	6	0
SILT FENCE (LF)	0	90
EROSION CONTROL MAT (SY)	0	0
MAINTAIN EROSION CONTROL BMP's (LS)	0	1

* All existing BMPs including Construction Entrance, Sediment Barriers, Silt Fence, Cut-off Trench, and Erosion Control Mat shall be maintained and repaired if necessary.

NOTE: 6' WIDE BACK OF CURB PROTECTION TO BE USED ON THIS PROJECT

Baughman Liberty Park 3rd Addition - Phase 2C
EROSION CONTROL
 Street Improvements

Baughman Company, P.A. 315 Ellis St. Wichita, KS 67211 P 316-262-7271 F 316-262-0149
 ENGINEERING | SURVEYING | PLANNING | LANDSCAPE ARCHITECTURE

PROJECT NUMBER 472-85140	DESIGN NBW	DRAWN JAK
REVISIONS:	APPROVED	DATE 12/27/16
	SCALE Noted	SHEET 11 OF 22

E:\Projects\Liberty Park 3rd_0403\F304\Engineering\Phase 2C\STR_STR PLANS.dwg