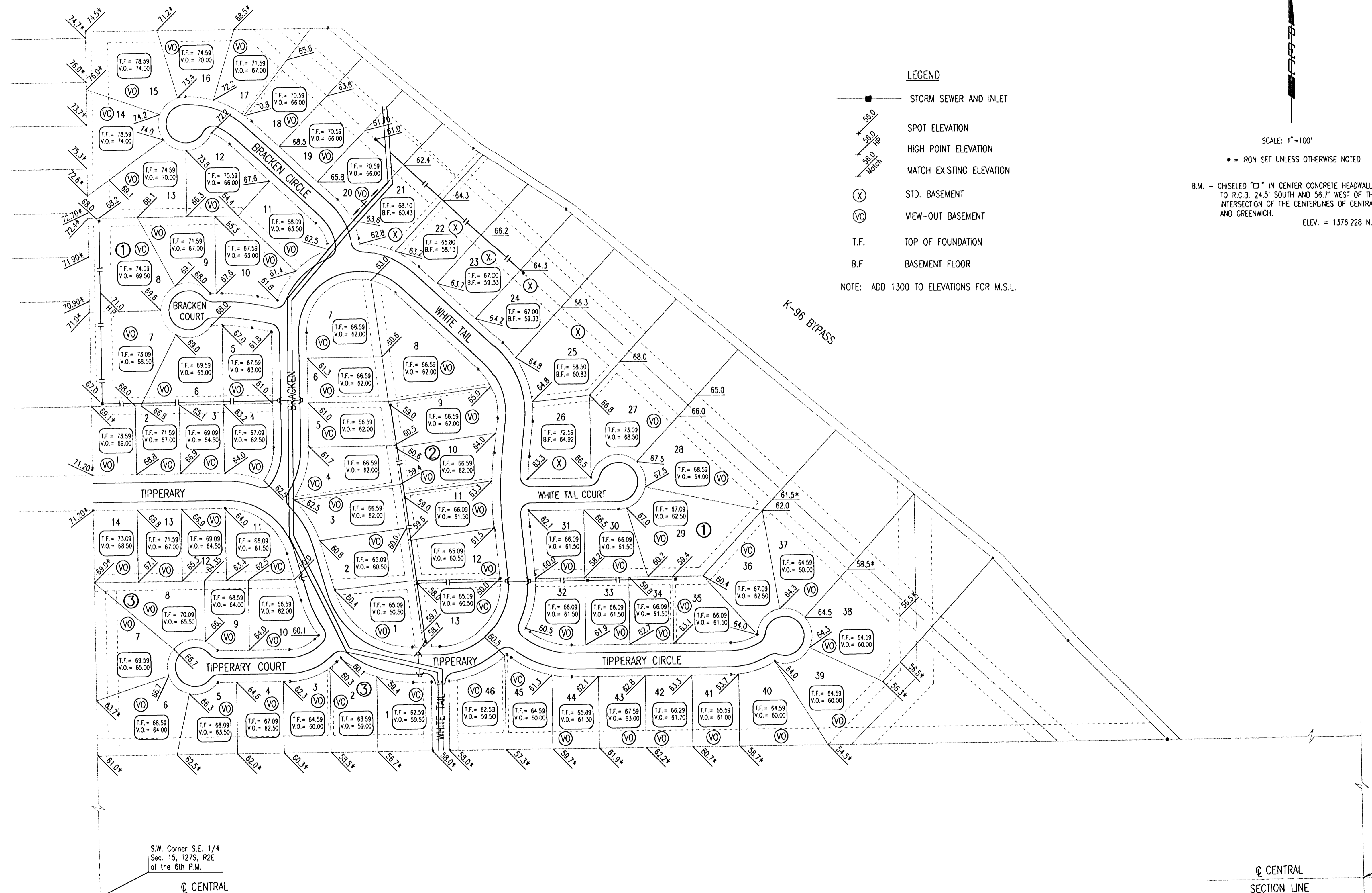


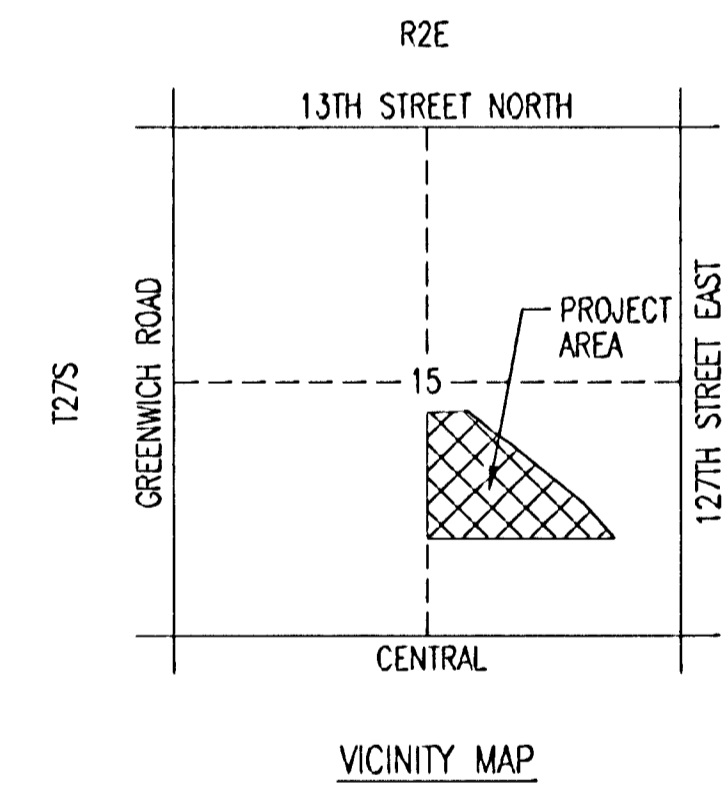
FOUR-CORNER PLAN/MASTER DRAINAGE PLAN BALTHROP 4TH ADDITION TO WICHITA, SEDGWICK COUNTY, KANSAS



SCALE: 1"=100'

• = IRON SET UNLESS OTHERWISE NOTED

B.M. - CHISELED "C" IN CENTER CONCRETE HEADWALL TO R.C.B. 24.5' SOUTH AND 56.7' WEST OF THE INTERSECTION OF THE CENTERLINES OF CENTRAL AND GREENWICH. ELEV. = 1376.228 N.G.V.D.



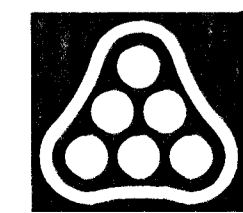
S.E. Corner, S.E. 1/4,
Sec. 15, T27S, R2E
of the 6th P.M.

© CENTRAL
SECTION LINE

S.W. Corner S.E. 1/4
Sec. 15, T27S, R2E
of the 6th P.M.

© CENTRAL
SECTION LINE

DSNR: BER OPER: JCA SCALE: 1"=100.00
 01-21-2003 03:53:14 pm



No.	Revision	By	Date
CITY OF WICHITA, KANSAS NEIL D. CABLE, P.E. - CITY ENGINEER BALTHROP 4TH ADDITION - PHASE 2 FOUR CORNER DRAINAGE PLAN CITY OF WICHITA PROJECT NO. 472-83469 Professional Engineering Consultants, P.A. 303 S. TOPEKA • WICHITA, KANSAS 67202 316-262-2691 • FAX 316-262-3003			
Designed by	BER	Job No.	35-02608-0
Drawn by		Date	January 2003
			SH. 24 of 43