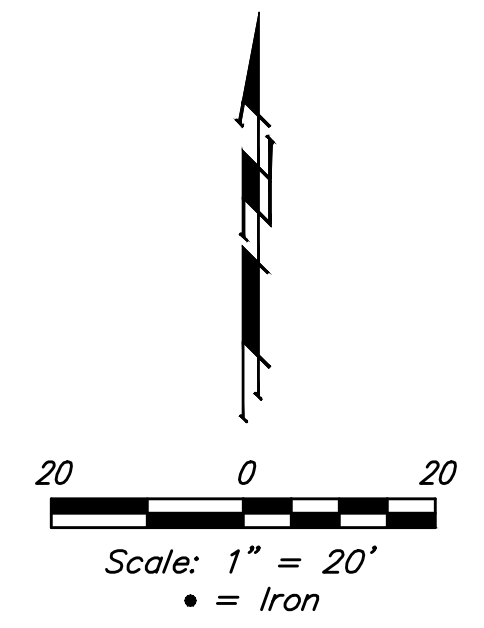


BENCHMARKS:
 "□" Cut in top of curb 10' west of end of existing pavement adjacent to Lot 37, Block C, Liberty Park 3rd Addition
 Elev. = 168.20 (City Datum)

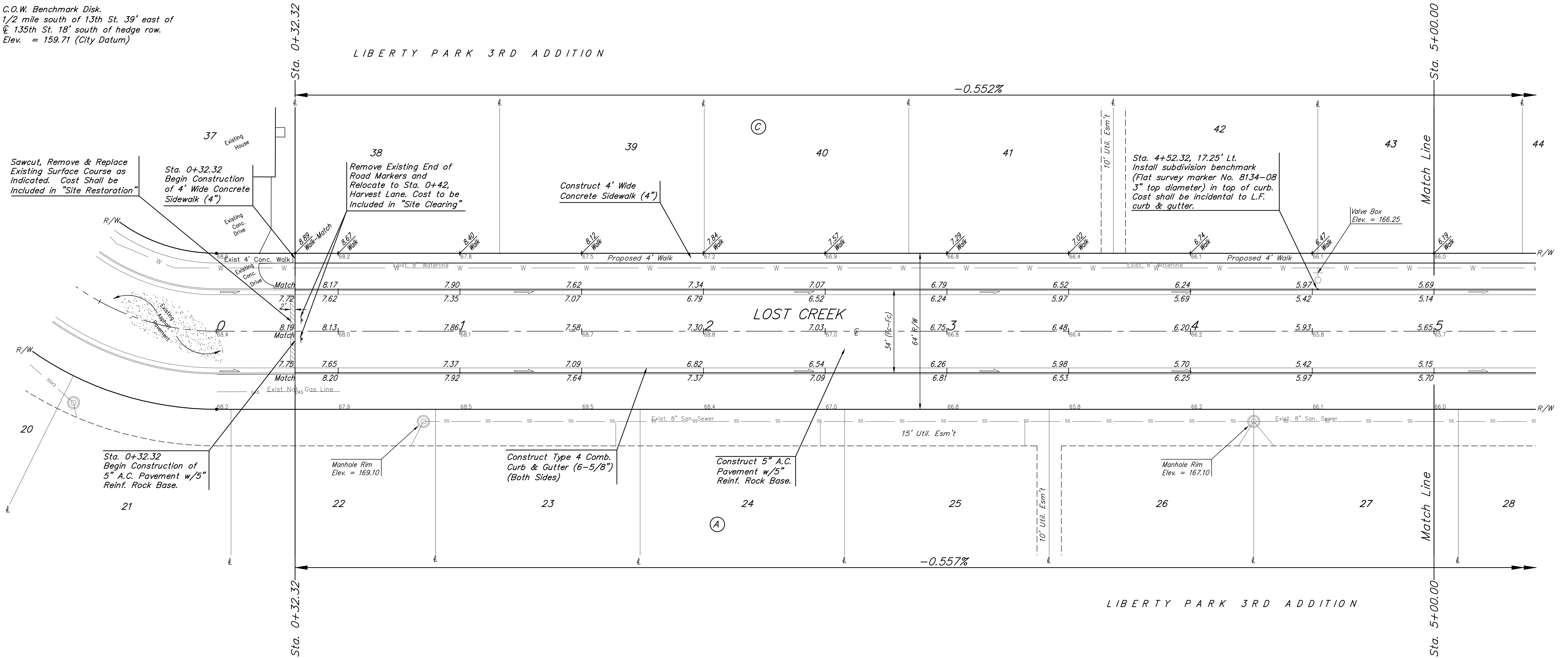
"□" Cut in top of curb 10' east of end of existing pavement adjacent to Lot 52, Block C, Liberty Park 3rd Addition
 Elev. = 164.21 (City Datum)

C.O.W. Benchmark Disk. 56' E and 55' N of \odot 135th St. W. & 13th St. N.
 Elev. = 167.83 (City Datum)

C.O.W. Benchmark Disk. 1/2 mile south of 13th St. 39' east of \odot 135th St. 18' south of hedge row.
 Elev. = 159.71 (City Datum)



LIBERTY PARK 3RD ADDITION



LIBERTY PARK 3RD ADDITION

		Liberty Park 3rd Addition - Phase 2C	
		LOST CREEK	
Sta. 0+32.32 to Sta. 5+00		Baughman Company, P.A. 315 Ellis St. Wichita, KS 67211 P 316-262-7271 F 316-262-0149 ENGINEERING SURVEYING PLANNING LANDSCAPE ARCHITECTURE	
PROJECT NUMBER 472-85140	DESIGN NBW	DRAWN JAK	DATE 12/27/16
REVISIONS:	APPROVED	SCALE Noted	SHEET
		6 OF 22	