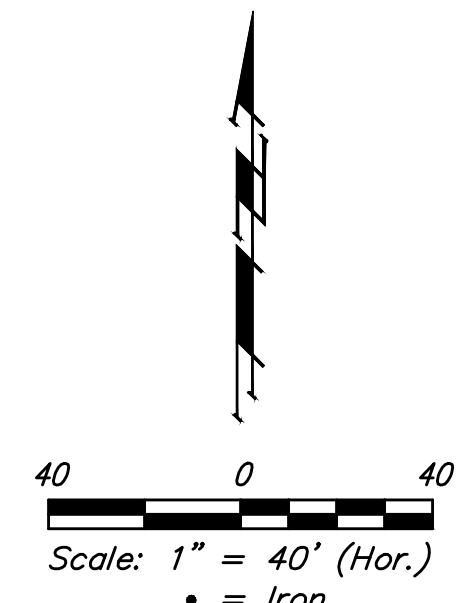
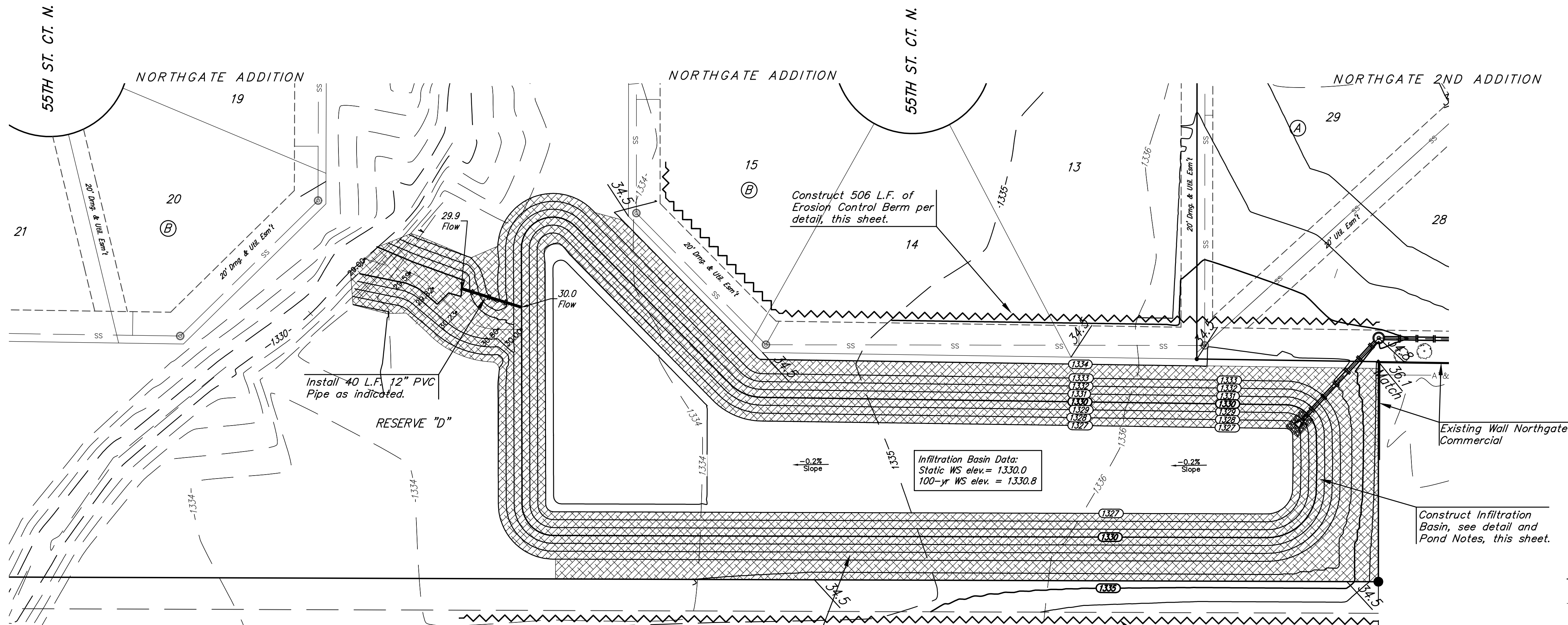


BENCHMARKS:

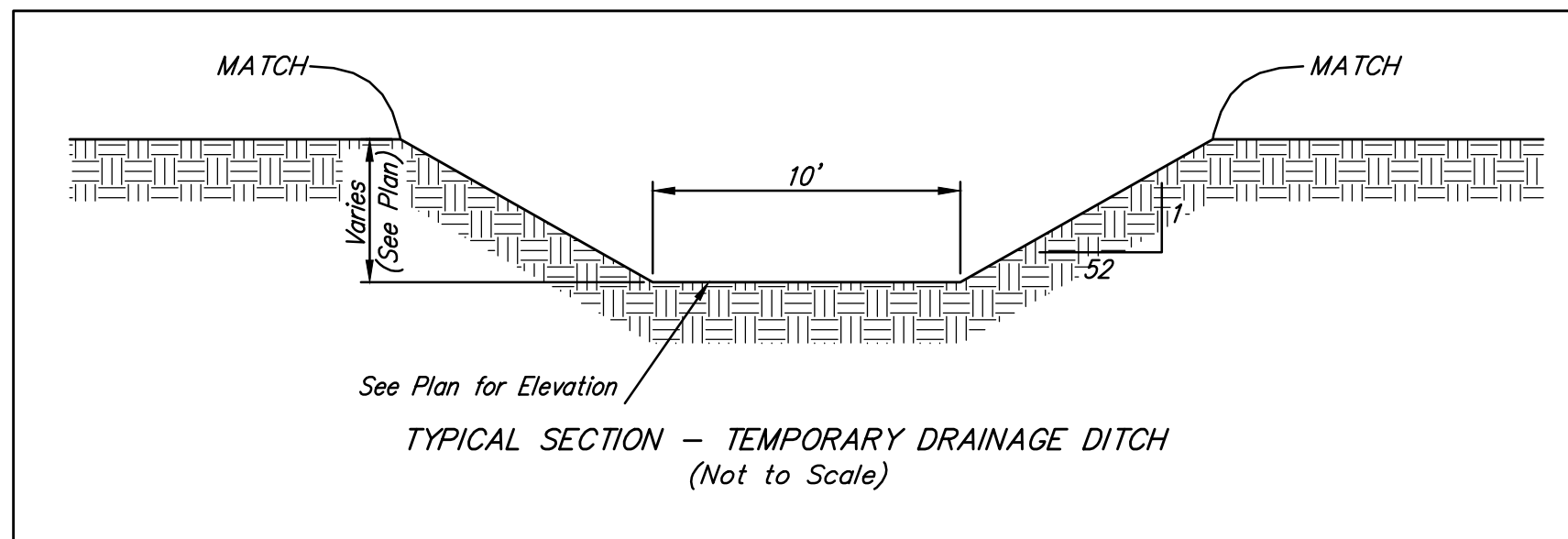
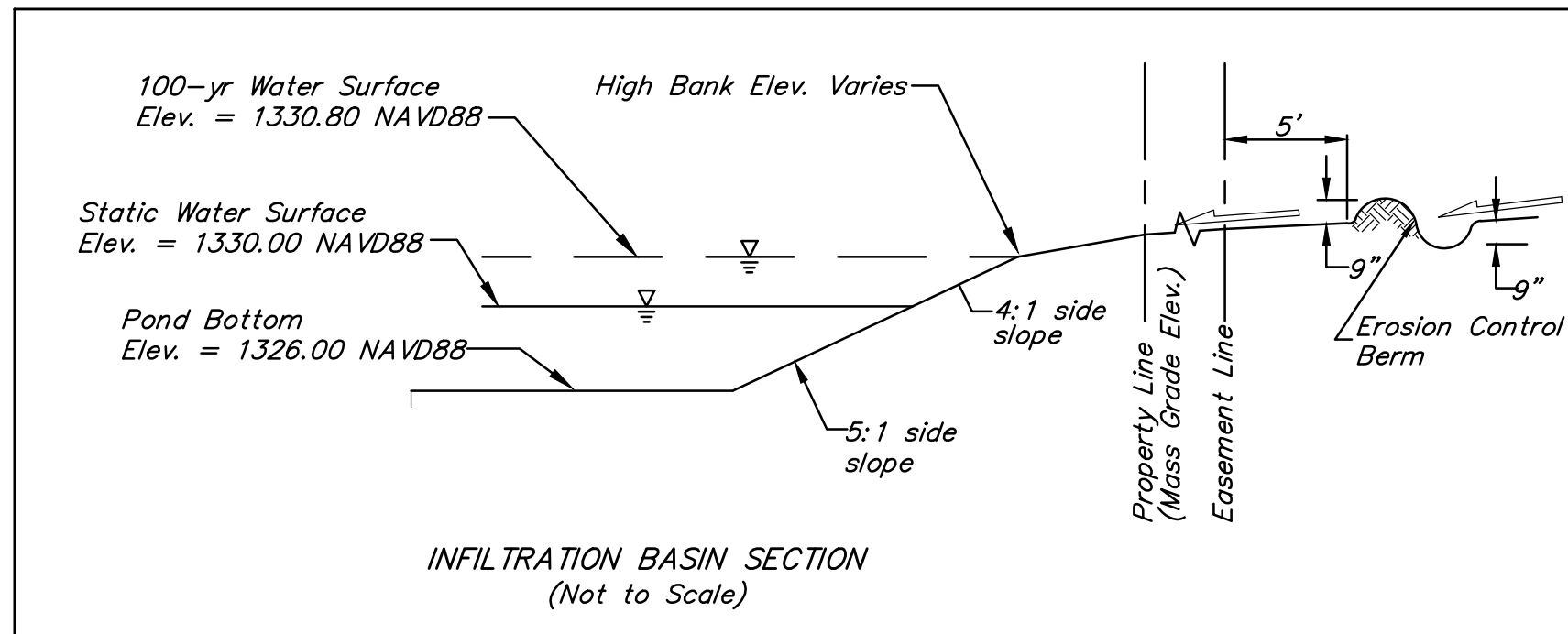
BM #1: Chiseled Square, Center of Storm Water Sewer Vault, West side of Meridian Ave, 145' South & 30.6' East of the Northeast Cor., Lot 1, Block A, Northgate 2nd Addition Elev. = 1334.49 NAVD88

BM #2: "X" on South End of Catch Basin, East Side of Meridian Ave, 423' South of 55th St. N. & 30' East of Meridian Ave. centerline Elev. = 1332.58 NAVD88



NOTES:

- Existing clay layer is 4' to 5' below existing surface, and approx. 2' to 3' thick.
- Infiltration basin shall be seeded per note on cover sheet.
- Compaction of 95% shall be obtained in all lots and street R/W's.
- Contractor to strip top 3" to 6" of top soil to remove vegetated material within the lots and street R/W before mass grading and stockpile. Top soil to be redistributed over Reserve "D" on sideslopes and on lots between building pads and in building pad rear yards.



EARTH WORK TOTALS

	C.Y. Excavation	C.Y. Fill
Mass Grading	1,629	1764.7
Pond Construction	19,419	6
Total	21,048	17,653

Earthwork quantities do not include shrink/swell factors and are for reference only. All cost associated with infiltration basin construction shall be included in the bid item "Grading, Mass".

- (1385)— Proposed Grade
- - -1385- - Existing Grade
- [Cross-hatch symbol] - Pond Seeding

EROSION CONTROL PLAN LEGEND

- [H symbol] - DROP INLET PROTECTION
- [O symbol] - CURB INLET PROTECTION
- [X symbol] - SILT FENCING
- [J symbol] - DITCH CHECKS
- [Cross-hatch symbol] - BACK OF CURB PROTECTION
- [Rip-rap symbol] - RIP RAP PROTECTION
- [Wavy line symbol] - CUT-OFF TRENCH

	Northgate 2nd Addition	
	POND PLAN	
Storm Water Drain		
<small>Baughman Company, P.A. 315 Ellis St. Wichita, KS 67211 P 316-262-7211 F 316-262-0149 ENGINEERING SURVEYING PLANNING LANDSCAPE ARCHITECTURE</small>		
PROJECT NUMBER 468-85142	DESIGN AEG	DRAWN DJL
REVISIONS:	APPROVED	DATE 11/16
	SCALE Noted	SHEET 12 OF 20

