

- LEGEND:**
- (LP) = LOW POINT
 - (HP) = HIGH POINT
 - (PC) = POINT OF CURVATURE
 - (PT) = POINT OF TANGENCY
 - TC = TOP OF CURB
 - CN = CROWN
 - FL = FLOWLINE
 - = DIRECTION OF STORMWATER FLOW

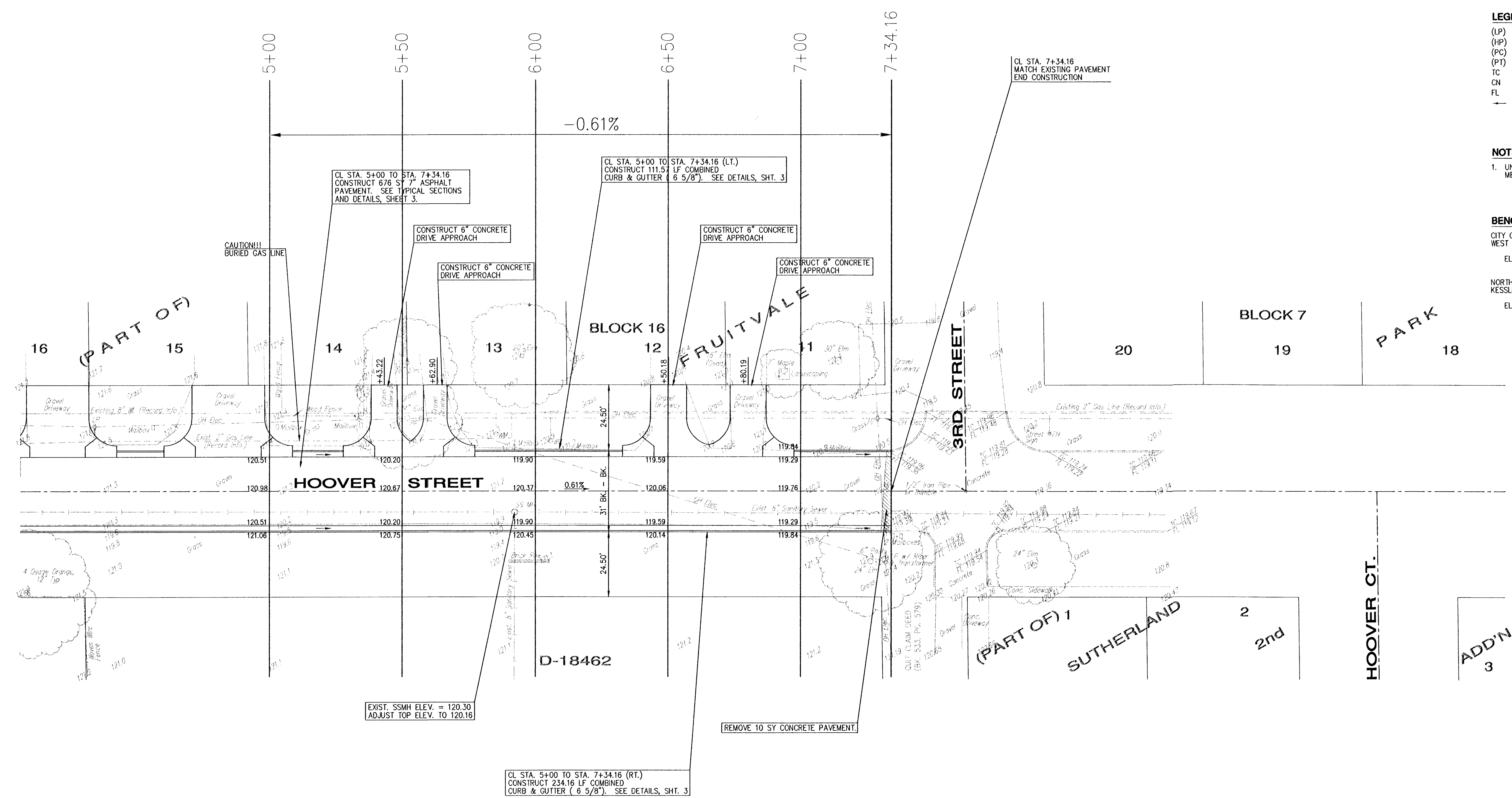
NOTES:

1. UNLESS OTHERWISE INDICATED, DIMENSIONS ARE MEASURED TO BACK OF CURB.

BENCHMARK:

CITY OF WICHITA DISC, AT THE NW COR. OF MAY & WEST ST. 65' W. OF CL WEST ST., 50' N. OF CL MAY
 ELEV. = 108.63 CITY DATUM

NORTH BOLT OF FIRE HYDRANT, AT THE NW CORNER KESSLER & MAY
 ELEV. = 112.78 CITY DATUM



YOUNG & ASSOCIATES, PA Civil and Environmental Engineers		100 South Georgia Derby Kansas, 67037 Tel: (316) 788-2552 Fax: (316) 788-4408
City of Wichita Sedgwick County, Kansas HOOVER STREET (Sta. 5+00 TO 7+34.16) PAVING PLAN		
Date: October 2002	Engr.: CRY	Tech.: DAS, JVS
Y&A Proj. No.: 02-145	Scale: As Noted	Sheet No. 5 of 16

C:\Acadwin\145\Finals\145app2.dwg Tue Oct 15 08:27:20 2002