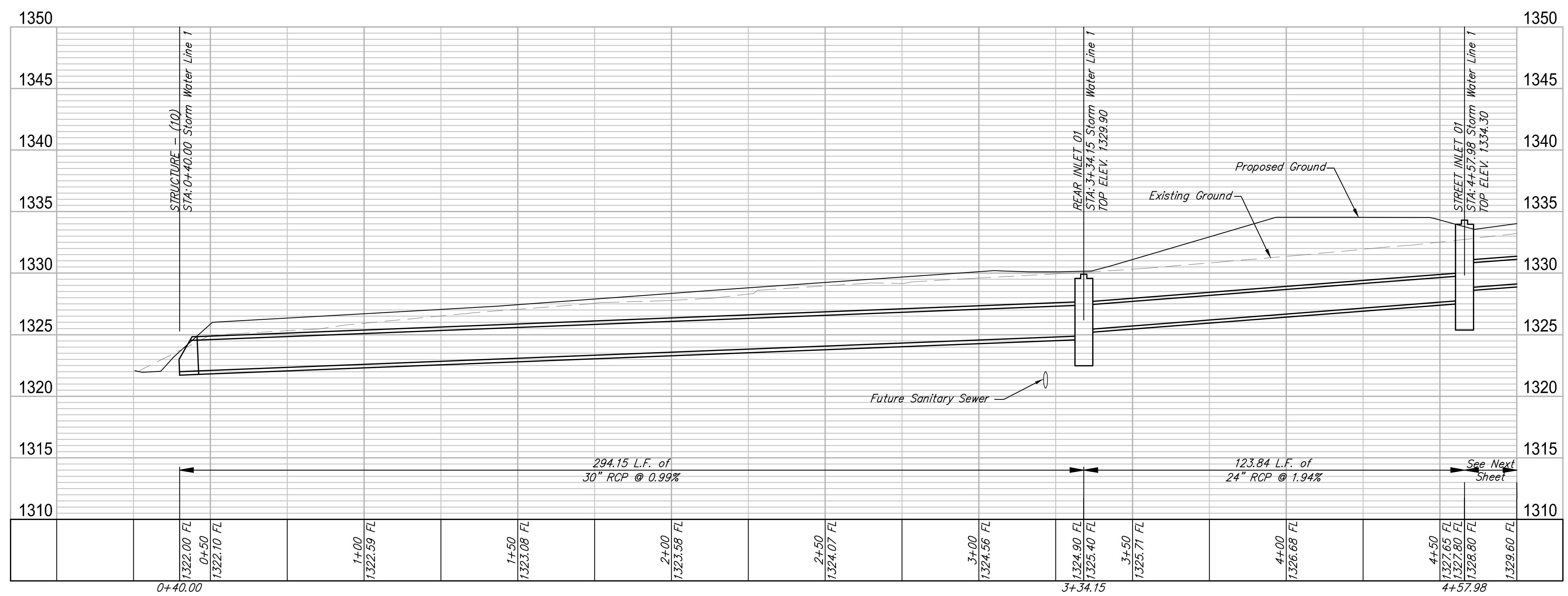


N 1680670.69 E 1692564.90  
 STA: 0+40.00, Storm Water Line 1  
 BEGIN Storm Water Line 1  
 INSTALL 24" END SECTION &  
 23 SY LIGHT STONE RIP RAP  
 RESTRAIN LAST TWO JOINTS  
 OF PIPE.

N 1680962.62 E 1692600.93  
 STA: 3+34.15, Storm Water Line 1  
 INSTALL PRECAST SHALLOW TYPE B INLET  
 W/ BEEHIVE INLET TOP  
 (DIA = 5.0')

N 1681086.41 E 1692597.45  
 STA: 4+57.98, Storm Water Line 1 =  
 CONSTRUCT TYPE 1A INLET (10'X3')  
 FUTURE STREET INLET.  
 SET INLET TOP ON BACKWARDS  
 WITH THIS PROJECT.

F:\Projects\Projects 4700-4799\4775E (Bellechase 3rd Add Ph 3)\Storm Water Drain 4775E - SWD 1.dwg



**Bellechase 3rd Addition SWD Storm Sewer Line 1**  
 Wichita, Kansas

PROJECT NUMBER: 468-85161  
 DRAWING FILE: 4775E - SWD 1

DESIGN: EIG  
 DRAWN: EIG/CDJ

REVIEW: Jan 2017  
 DATE: Feb 2017

RB 303  
 4775E  
 SHEET  
 5  
 OF  
 26