

**SANITARY SEWER EXTENSION
LATERAL #488, SOUTHWEST INTERCEPTOR SEWER**

Woods Edge Addition

w/Unplatted Parcels

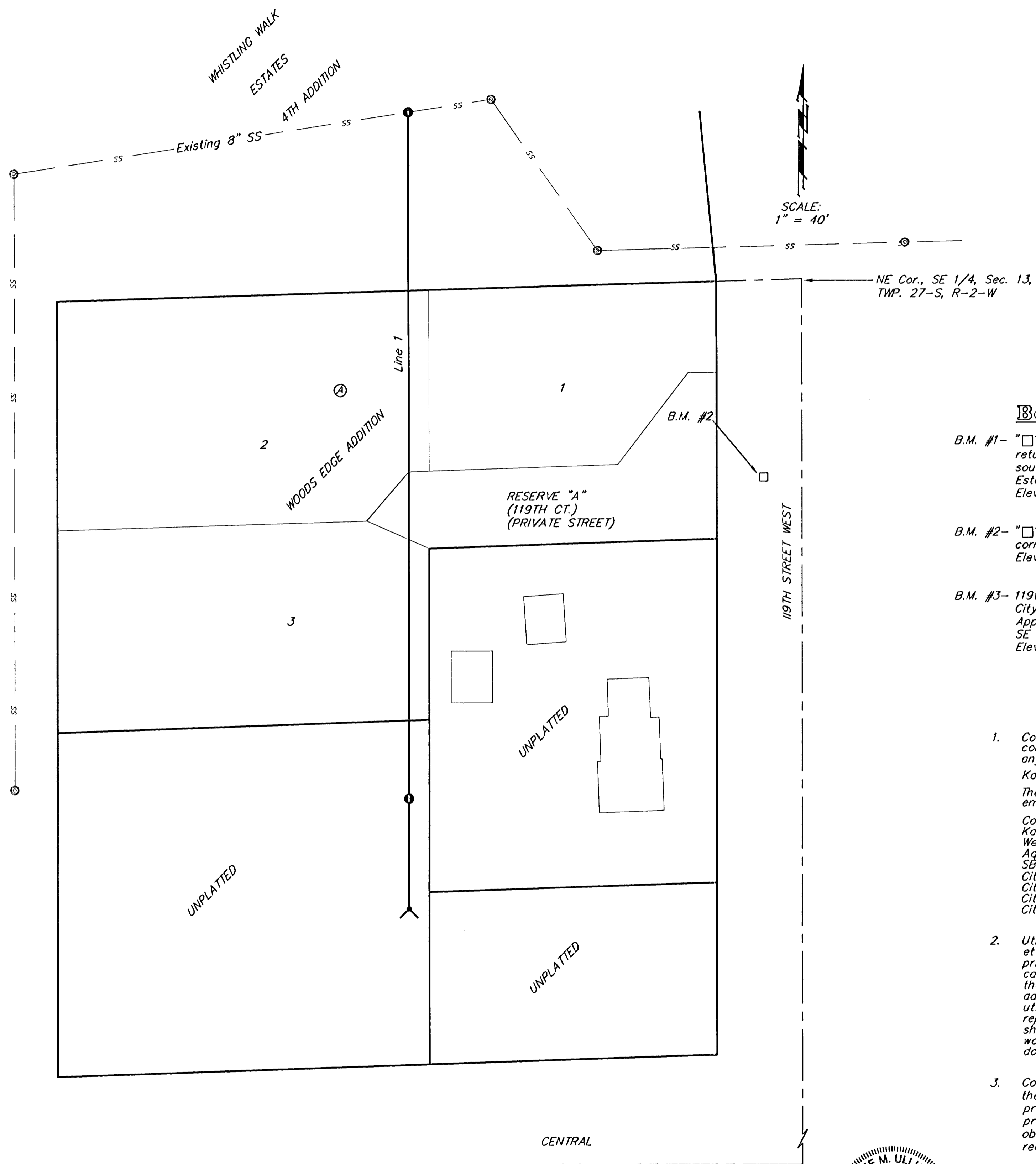
Project Number: 468-83504

OCA Number: 743957

CITY OF WICHITA, KANSAS

Neil Cable, P.E. City Engineer

June 2003



Bench Marks:

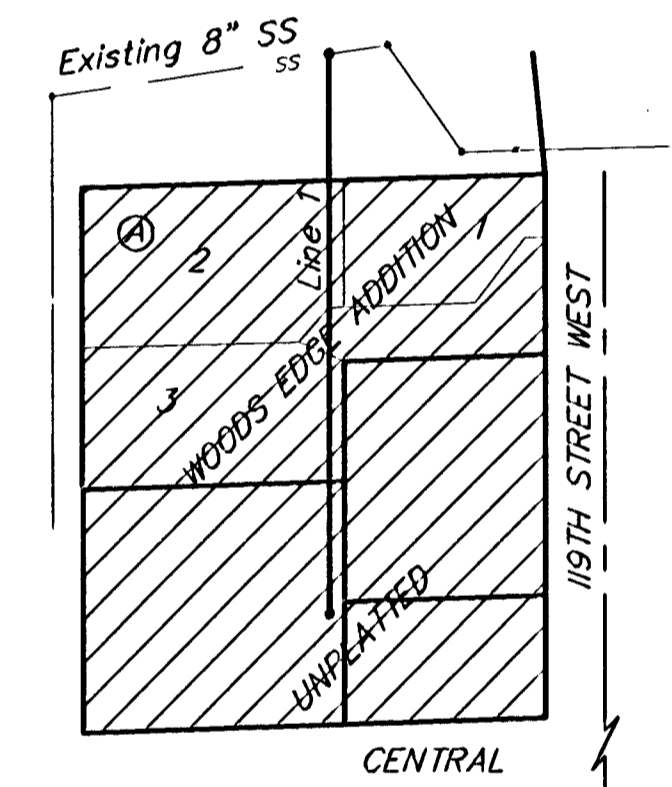
- B.M. #1- "□" Cut- Top of curb at north end of curb return, north of the NE corner of Reserve "B", south side of Lost Creek Circle, Lost Creek Estates, Wichita, Kansas.
Elevation = 148.34 City Datum
1335.74 NGVD29
- B.M. #2- "□" Cut- Top of curb, north of inlet at SE corner of Woods Edge Addition.
Elevation = 147.32 City Datum
1334.72 NGVD29
- B.M. #3- 119th Street West & Lost Creek Cir. (Cowskin)
City of Wichita Bench Mark Disc
Approximately 175 feet north of Lost Creek Cir. SE corner of RCB. South end of hubguard.
Elevation = 151.82 City Datum
1339.22 NGVD29

Index

Cover Sheet	1
Plan/Profile Sheet	2
Manhole Details	3
Ring & Cover Detail	4
Cleanout Riser Detail	5
BMP Erosion Detail	6
Copy Of Plat	7

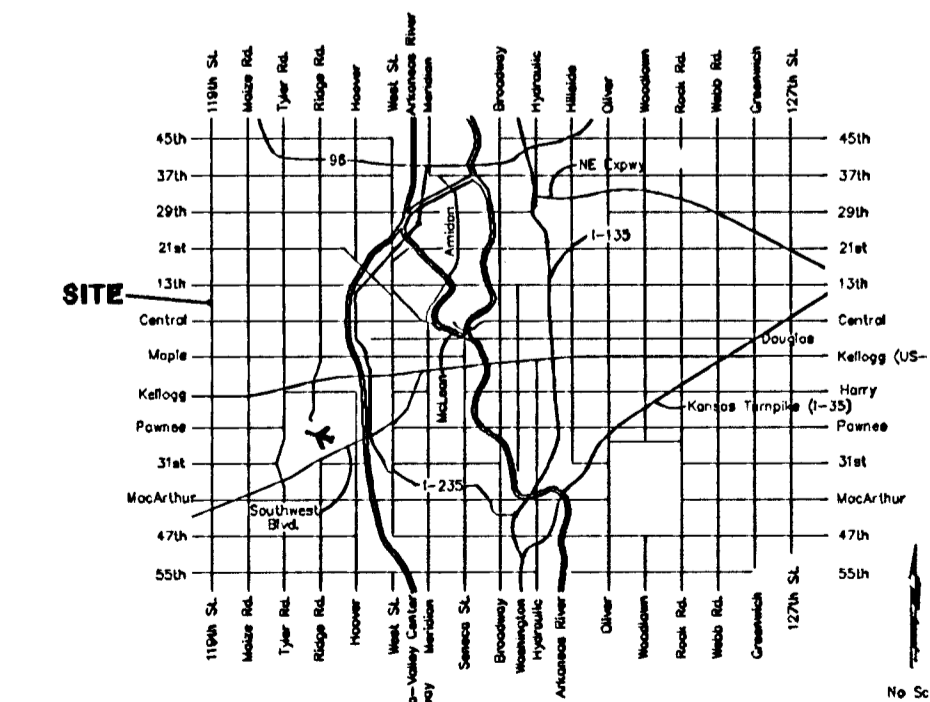
Legal Description

Woods Edge Addition along with 3 unplatted parcels.
Wichita, Sedgwick County, Kansas



Benefit District

Location Map



General Notes

1. Contractor will be required to provide notice to utility companies a minimum of forty-eight (48) hours prior to any excavation, as follows:
Kansas One-Call 687-2470
The Contractor must notify the following in case of an emergency:
Cox Communications 262-4270
Kansas Gas Service Company 1-888-482-4950
Westar Energy (Electric) 383-8650
Aquila Energy (Gas) 1-800-303-0357
SBC 1-800-286-8313
City of Wichita Water Dept. (Water) 268-4908
City of Wichita Sewer Maint. (SS) 268-4024
City of Wichita Storm Sewer Maint. 268-4090
City of Wichita Traffic Maint. 268-4034
2. Utility service lines, poles, valve boxes, meters, et cetera are to be adjusted as necessary by others prior to construction unless the plans specifically call for their adjustment by the Contractor or unless the plans specifically identify a utility to be adjusted by its owner during construction. Existing utilities and their location, as shown on the plans represent the best information obtainable for design and shall be field verified. The contractor will be required to work around existing utilities within the right-of-way which do not conflict with proposed construction.
3. Contractor shall not start work on the project until the project inspector is assigned to the project and is present on the site. Contractor shall not start on the project until all necessary bonds and permits have been obtained. Any work done without inspection will be required to be uncovered for inspection.
4. The Contractor shall be responsible for maintaining continuous flow of sewage through construction. Contractor's proposed method for maintaining sewage flow shall be approved by the Engineer. Cost of maintaining flow of sewage through construction will not be paid for directly and this cost shall be considered as subsidiary to the other pay items of work.
5. Rubble from the removal of miscellaneous structures and excess excavation which is to be wasted shall be disposed of on sites to be provided by the Contractor. These sites shall be approved by the Engineer as to suitability, appearance and site location. Locations that, in the opinion of the Engineer, will leave an unsightly appearance will not be approved. All disposal sites must be approved by the Kansas Department of Health and Environment. Material either stockpiled or disposed of in a flood plain would require a Kansas State Board of Agriculture permit. Any material dumped in waters of the United States or wetlands is subject to U.S. Corps. of Engineers permitting regulations. Any material buried or stockpiled beyond approved construction limits would require additional archaeological investigations unless buried in a previously approved borrow location.
6. All sanitary sewers shall be installed in accordance with the most recent edition of City of Wichita, Kansas Standard Specifications for the Construction of City Projects.
7. All disturbed R/W areas not intended for pavement or sidewalk construction shall be seeded with Kansas Premium Fescue Blend at a rate of 8 lb./1000 Sq. Ft., fertilized with a 16-20-6 ratio at a rate of 4 lb./1000 Sq. Ft., and mulched with Prairie Hay at a rate of 92 lb./1000 Sq. Ft. Mulch shall be "patted" with forks or punched into soil to reduce loss due to wind.
8. The Contractor shall give all property owners/or tenants of developed property directly abutting the construction of this project a minimum of ten (10) days notice prior to start of construction.



BENCHMARKS:

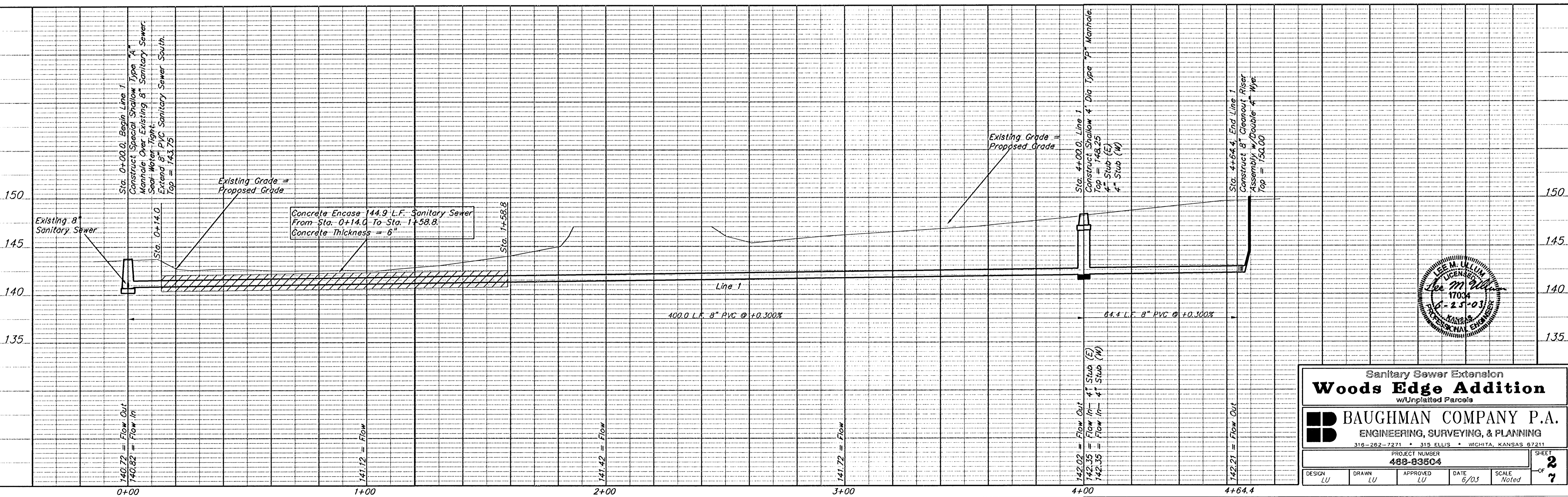
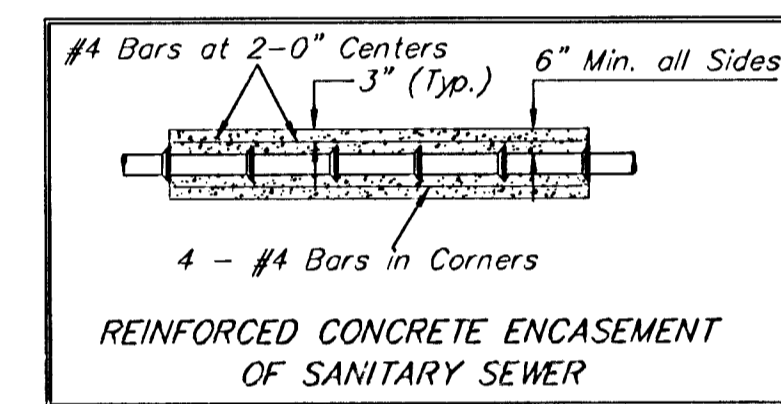
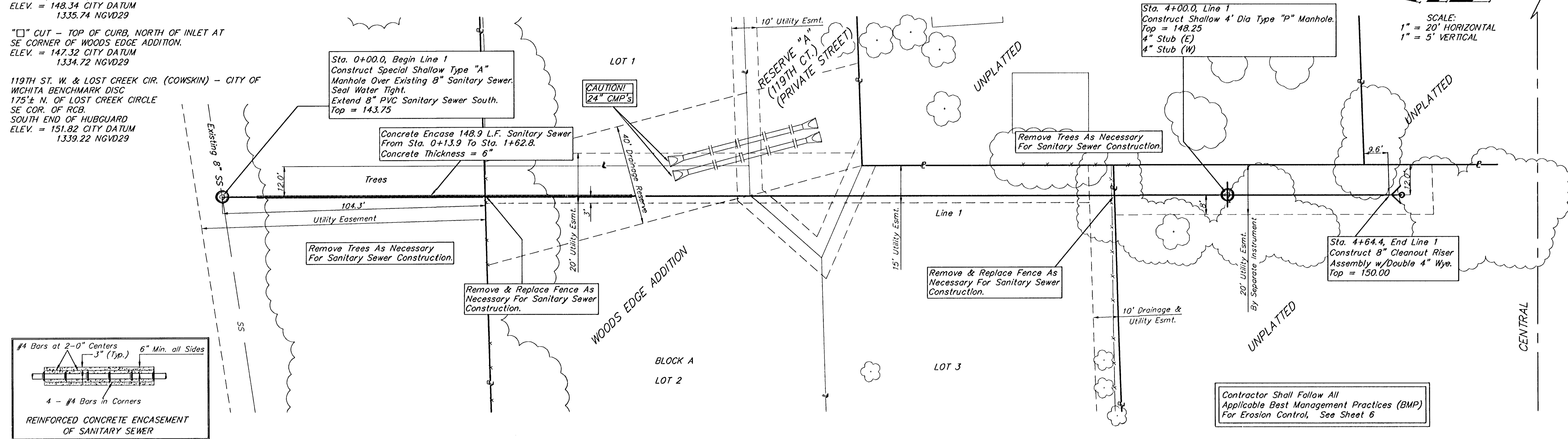
"□" CUT - TOP OF CURB AT N. END OF CURB RETURN, N. OF THE NE COR. OF RESERVE "B", (S. SIDE OF LOST CREEK CIRCLE), LOST CREEK ESTATES, WICHITA, KANSAS.
ELEV. = 148.34 CITY DATUM
1335.74 NGVD29

"□" CUT - TOP OF CURB, NORTH OF INLET AT SE CORNER OF WOODS EDGE ADDITION.
ELEV. = 147.32 CITY DATUM
1334.72 NGVD29

119TH ST. W. & LOST CREEK CIR. (COWSKIN) - CITY OF WICHITA BENCHMARK DISC
175± N. OF LOST CREEK CIRCLE
SE COR. OF RCB.
SOUTH END OF HUBGUARD
ELEV. = 151.82 CITY DATUM
1339.22 NGVD29

NE Cor., SE 1/4, Sec. 13,
Twp. 27-S, R-2W.

119TH STREET WEST

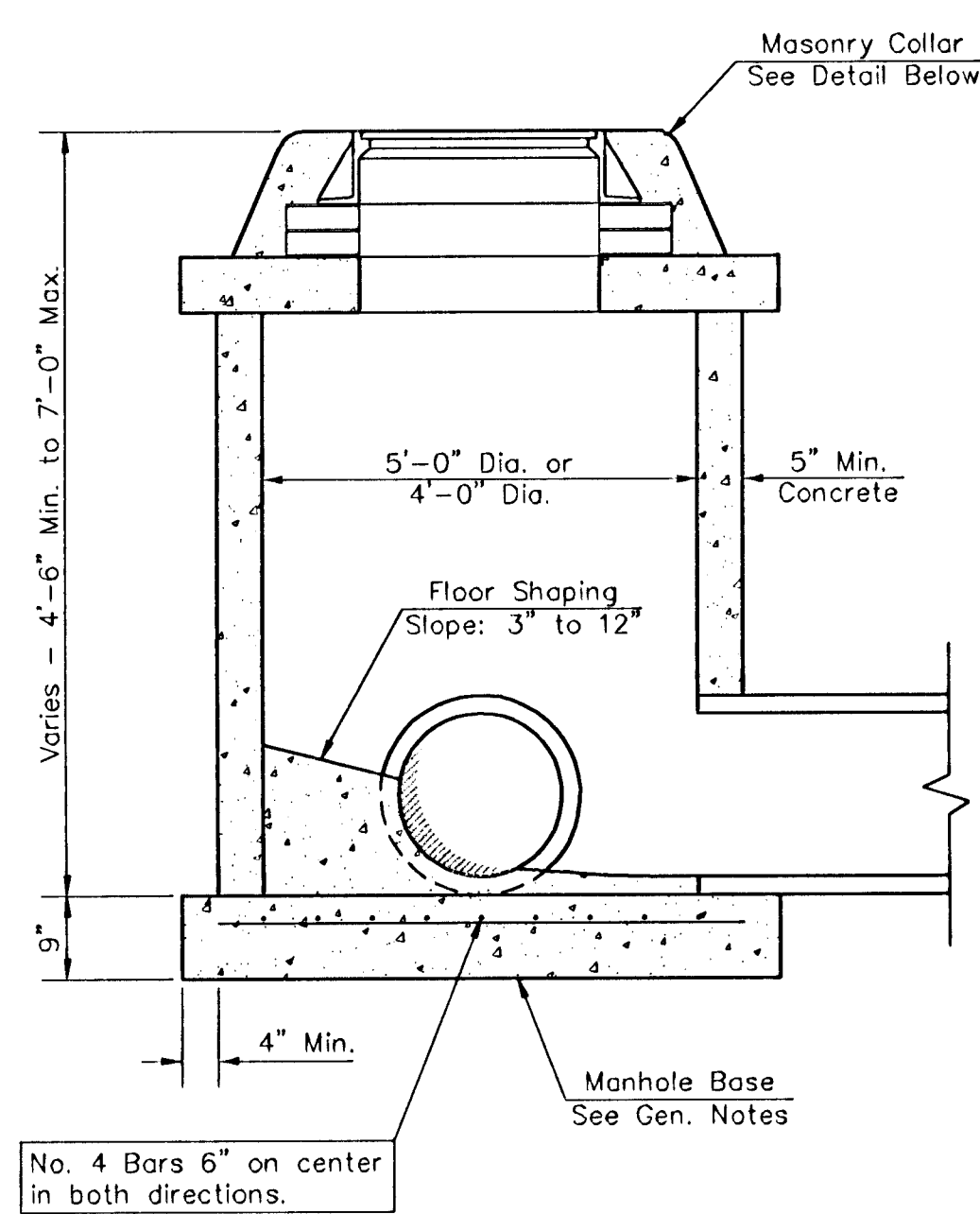


Sanitary Sewer Extension
Woods Edge Addition
w/Unplatted Parcels

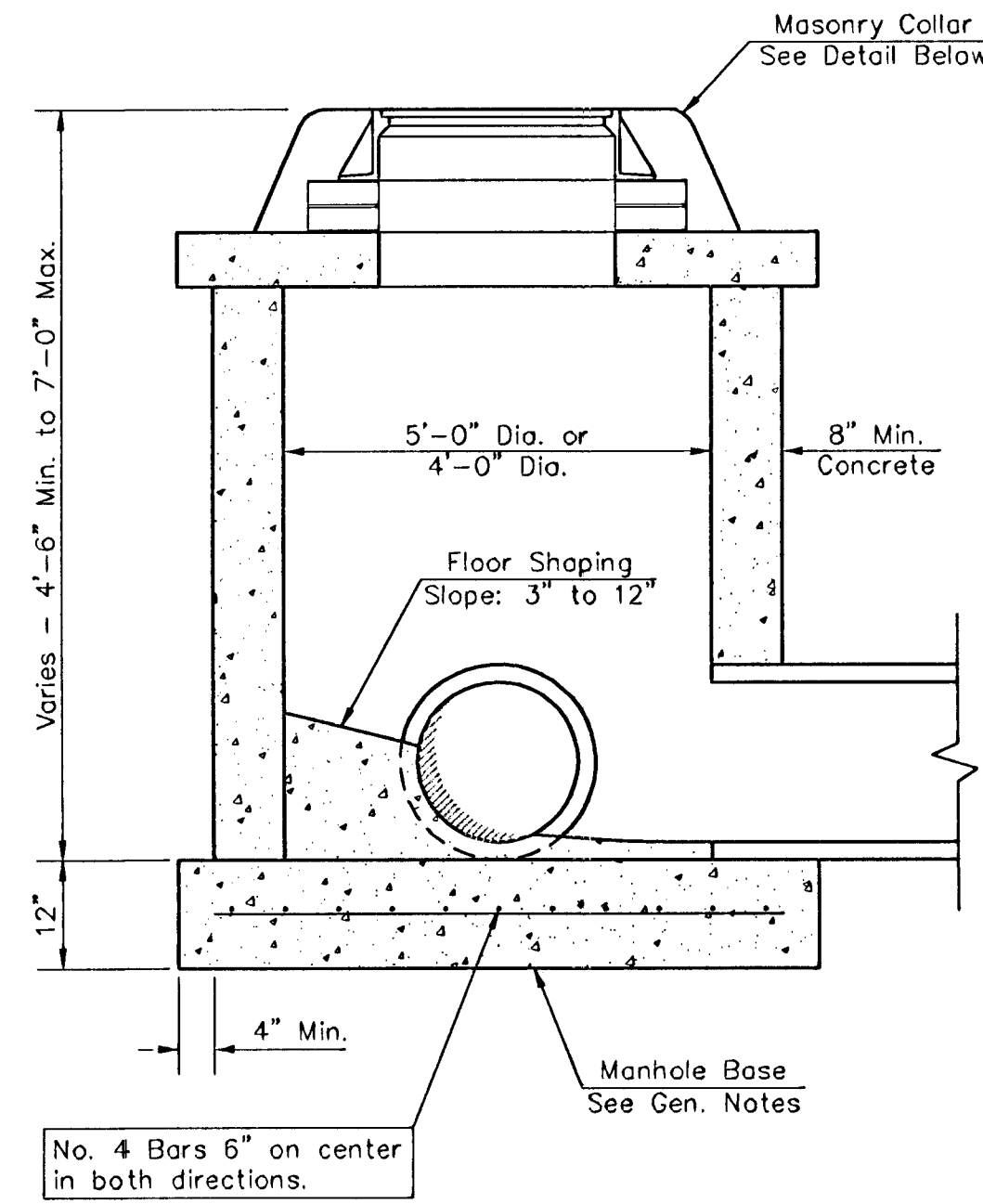
BAUGHMAN COMPANY P.A.
ENGINEERING, SURVEYING, & PLANNING
318-262-7271 • 315 ELLIS • WICHITA, KANSAS 67211

PROJECT NUMBER
488-83504

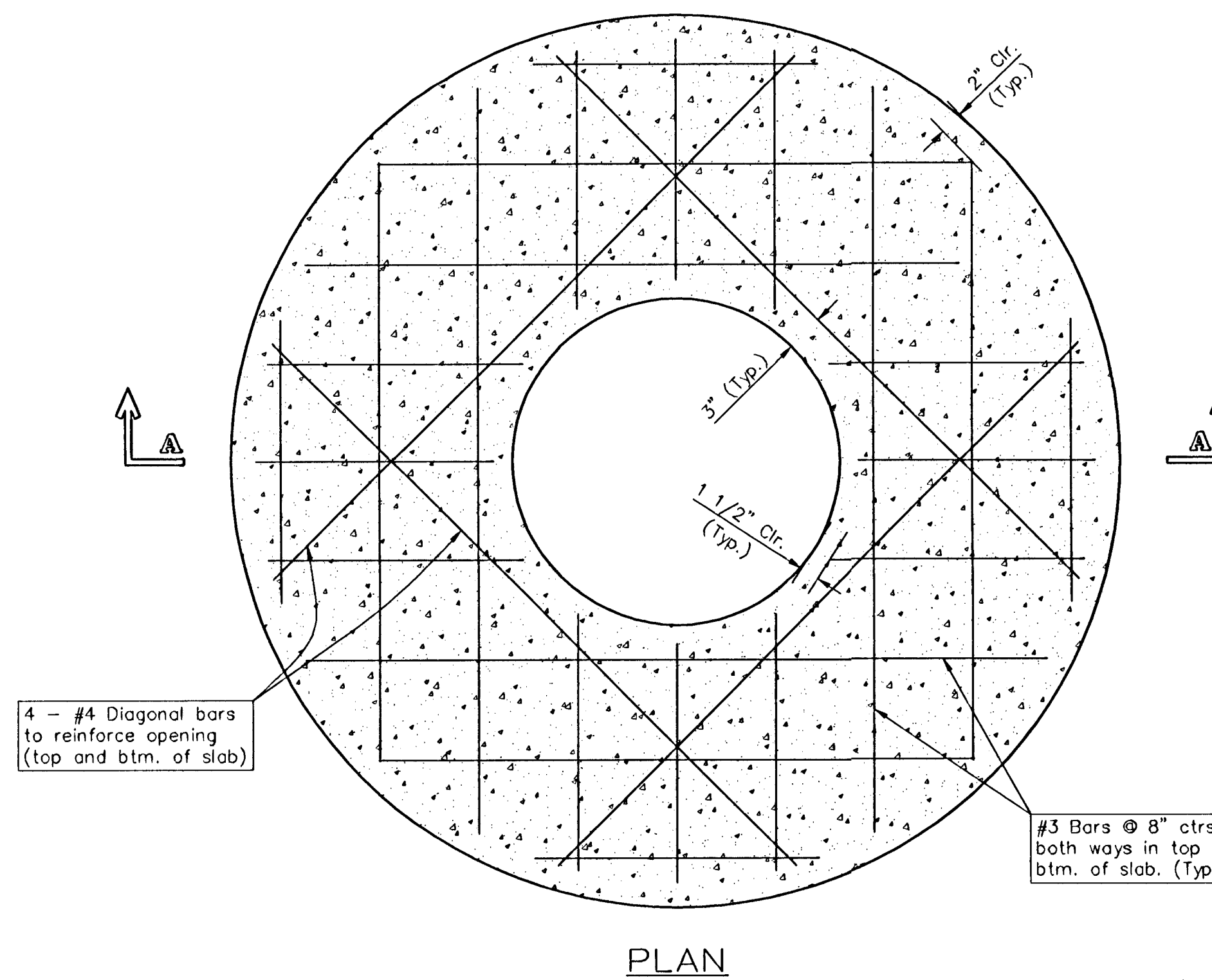
DESIGN LU	DRAWN LU	APPROVED LU	DATE 6/03	SCALE Noted	SHEET 2 OF 7
--------------	-------------	----------------	--------------	----------------	-----------------------



SHALLOW TYPE "P" MANHOLE

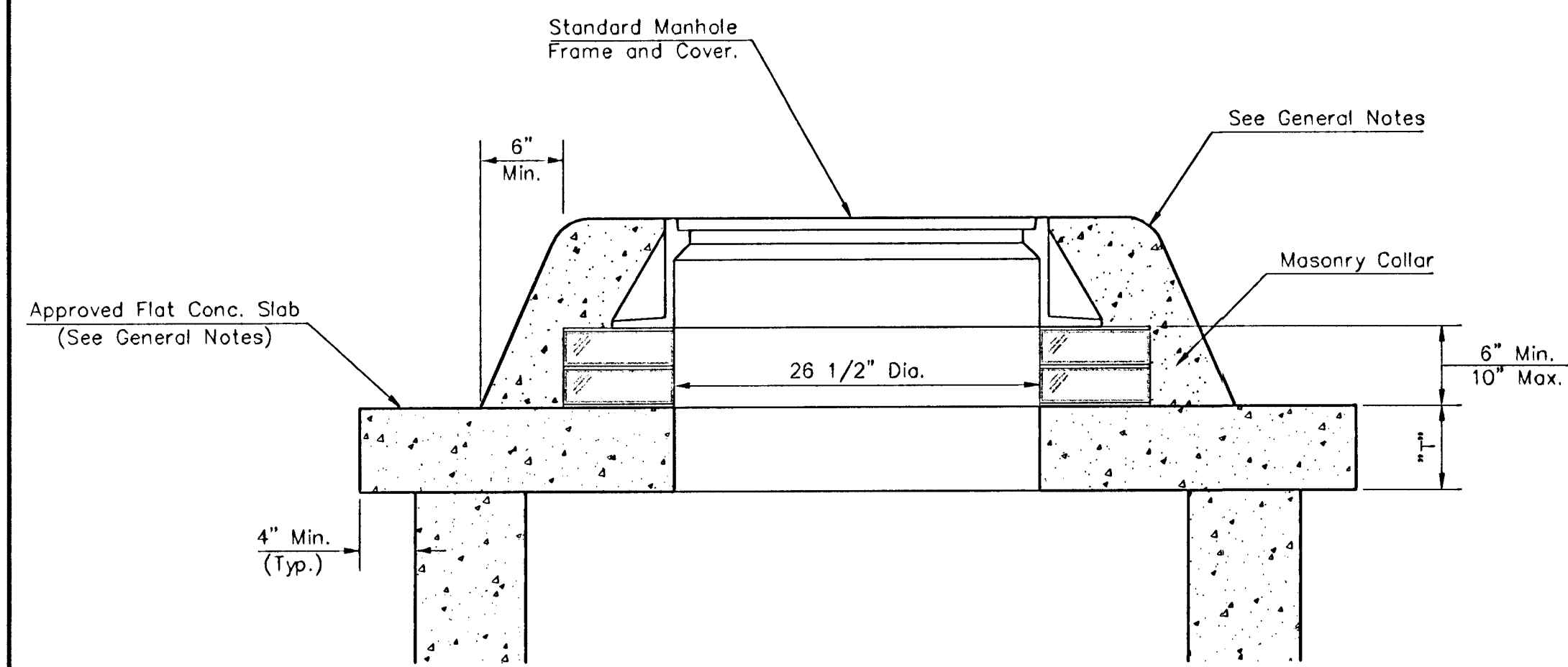


SHALLOW TYPE "C" MANHOLE

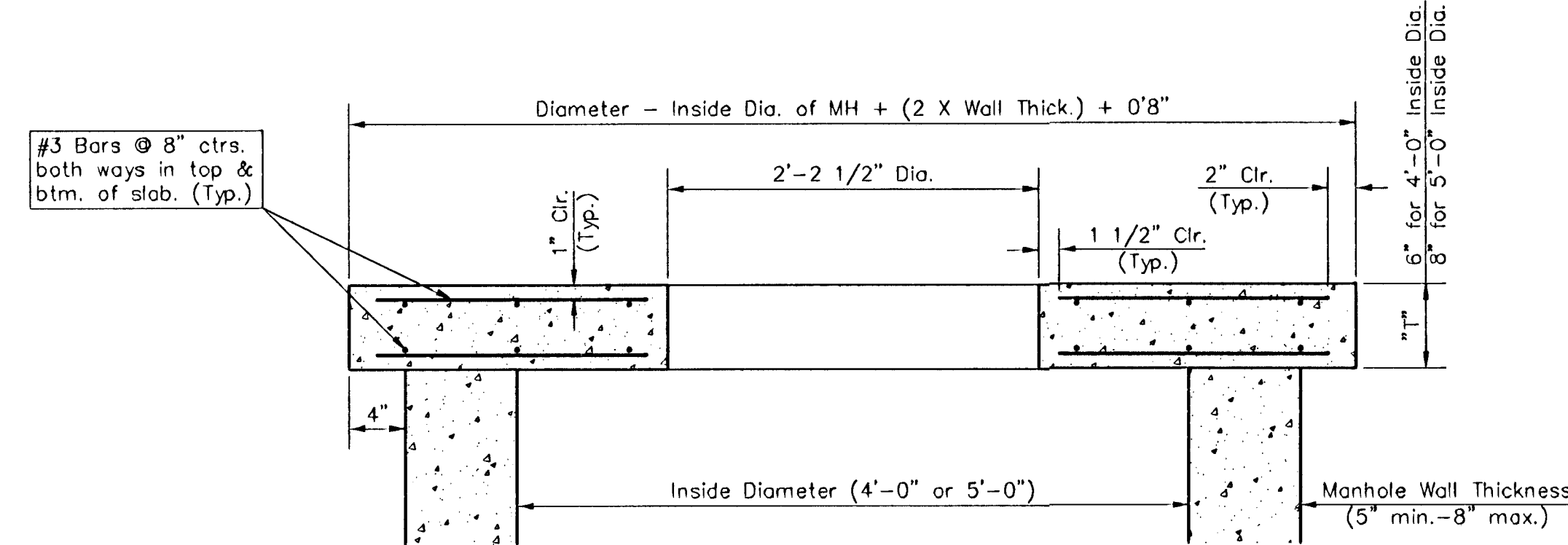


PLAN

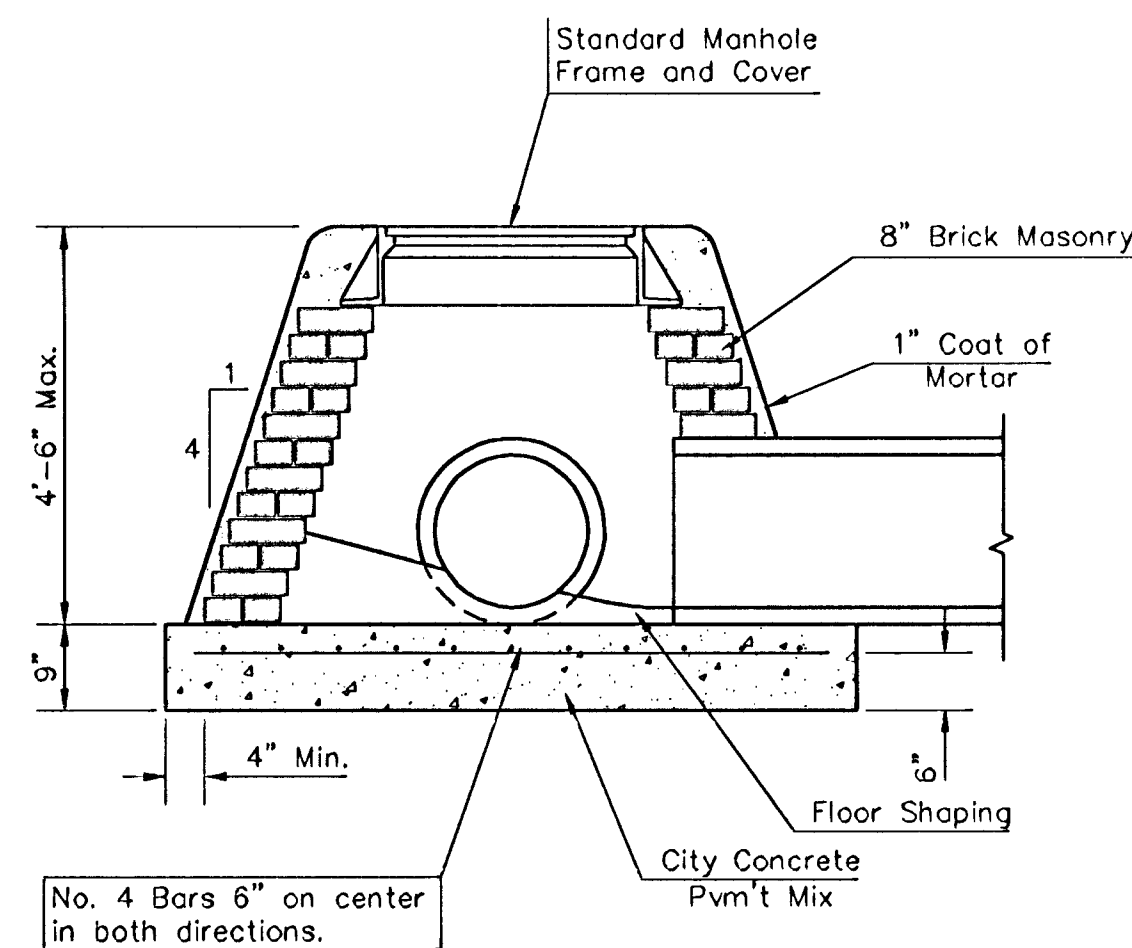
- GENERAL NOTES**
- Mortar used in masonry construction shall contain 8 sacks of cement per cubic yard. Concrete used in manhole bases shall conform to the requirements of concrete for concrete pavement construction as specified in the city standard paving specifications using city concrete cement mix without air entraining admixture. Mortar shall be placed around the manhole ring as shown on the drawings when manholes are constructed in unpaved areas. Manholes constructed where pipe sizes are smaller than 24" shall have an inside diameter of 4". Manholes constructed where pipe sizes are 24" or larger shall have an inside diameter of 5". Completed manhole shall be without leaks and water tight.
 - Reinforcing steel shall be installed in the manhole bases and shall consist of no. 4 bars placed on 6" centers in both directions. The manhole base reinforcement shall be placed 6" above the bottom of the manhole base. All costs for furnishing and installing reinforcing steel shall be included in the unit price bid for the manhole.
 - The floors of all manholes shall be shaped with flow channels such that the manholes will be self cleaning and free of areas where solids could be deposited as sewage flows through the manhole from all inlet pipes to the outlet pipe. Flow channels shall be formed to match the bottom halves of the inflowing pipes and the outflowing pipe as shown by the drawings. Manhole floors shall have slopes of 3 inches per foot in the areas outside of the flow channels sloped toward the flow channels. Pipes laid through manholes shall have the top half removed to neat lines for the full inside diameter of the manhole. Manhole floors shall then be shaped around the bottom half of the pipe which forms the flow channel.
 - Pipes installed within the excavation made for the manhole shall be cradled with concrete to the limits of the manhole excavation. When clay pipe is used, the cradle shall extend to the first joint outside the manhole. The cradle shall be terminated at the clay pipe joint in a manner which will maintain the flexibility of the joint. Cost of cradle within manhole excavation or to clay pipe joints adjacent to manhole shall be included in the unit price bid for the manhole.
 - Manhole cover castings and manhole frame castings shall conform to the requirements as indicated in the standard specifications and as shown in the standard detail drawings.
 - The crowns of inflowing pipes shall never be set lower than the crown of the outflowing pipe.
 - Standard shallow manholes type "P" and "C" shall be paid for at the unit price bid per each for the type and diameter indicated. All standard shallow manhole diameters will be 4' unless indicated otherwise.
 - All brick used in manhole construction shall meet Grade SW of ASTM C652 or C62-87.



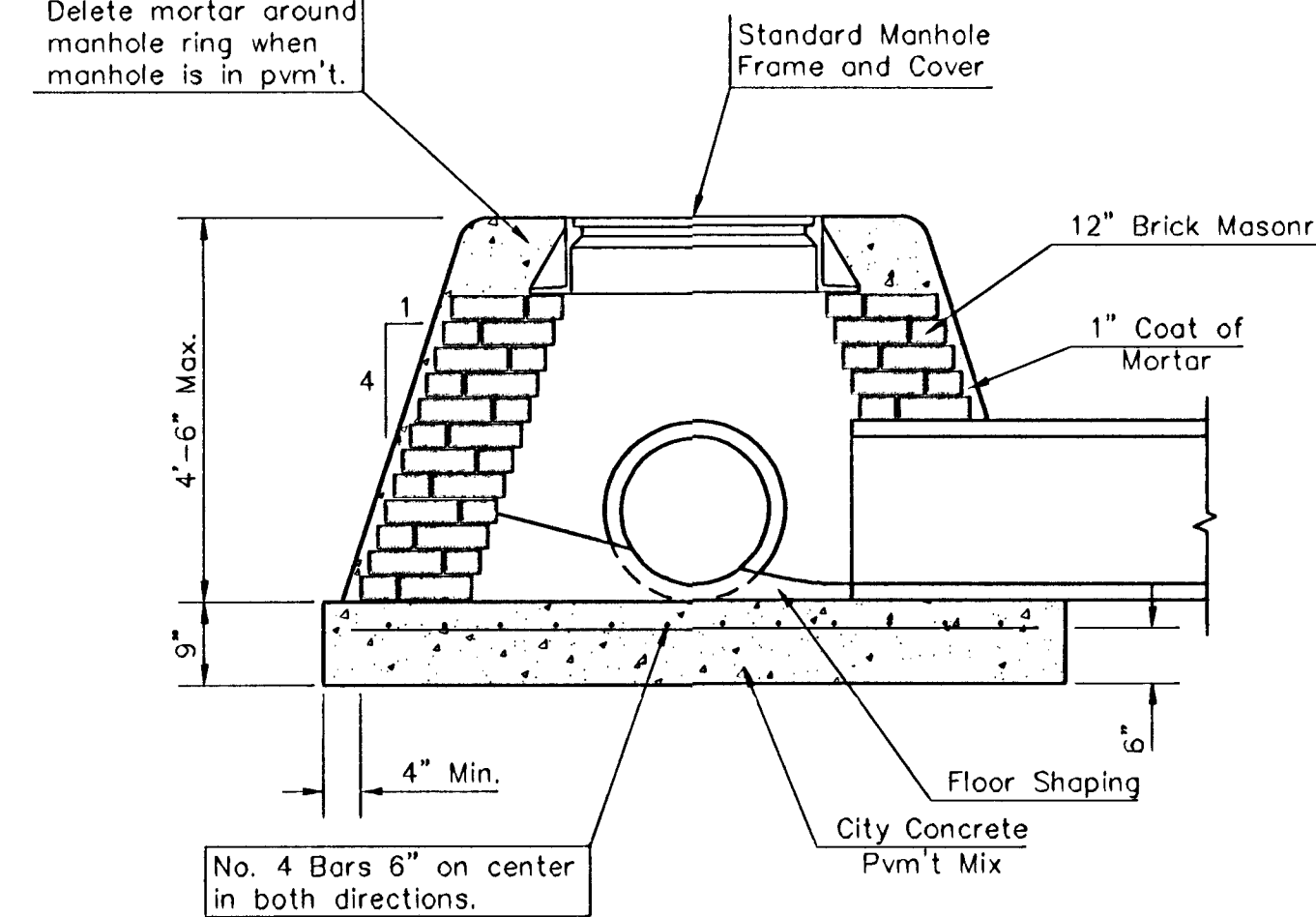
MASONRY COLLAR DETAIL



FLAT CONCRETE SLAB DETAILS



SPECIAL SHALLOW TYPE "A" MANHOLE



SPECIAL SHALLOW TYPE "B" MANHOLE

CITY OF WICHITA, KANSAS
STD. SHALLOW MANHOLES

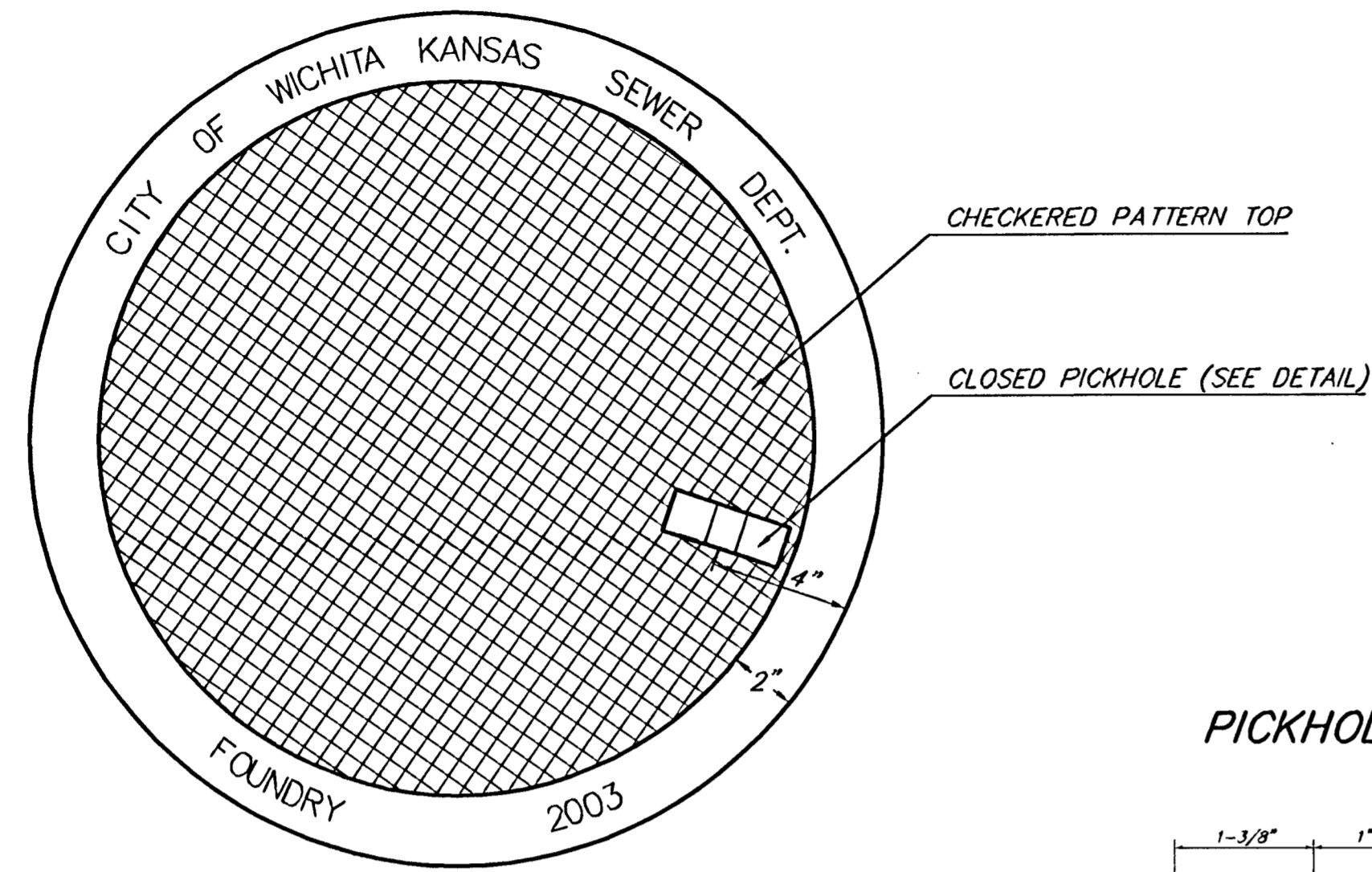
BAUGHMAN COMPANY P.A.
 ENGINEERING, SURVEYING, & PLANNING
 316-262-7271 • 315 ELLIS • WICHITA, KANSAS 67211

PROJECT NUMBER
488-83504

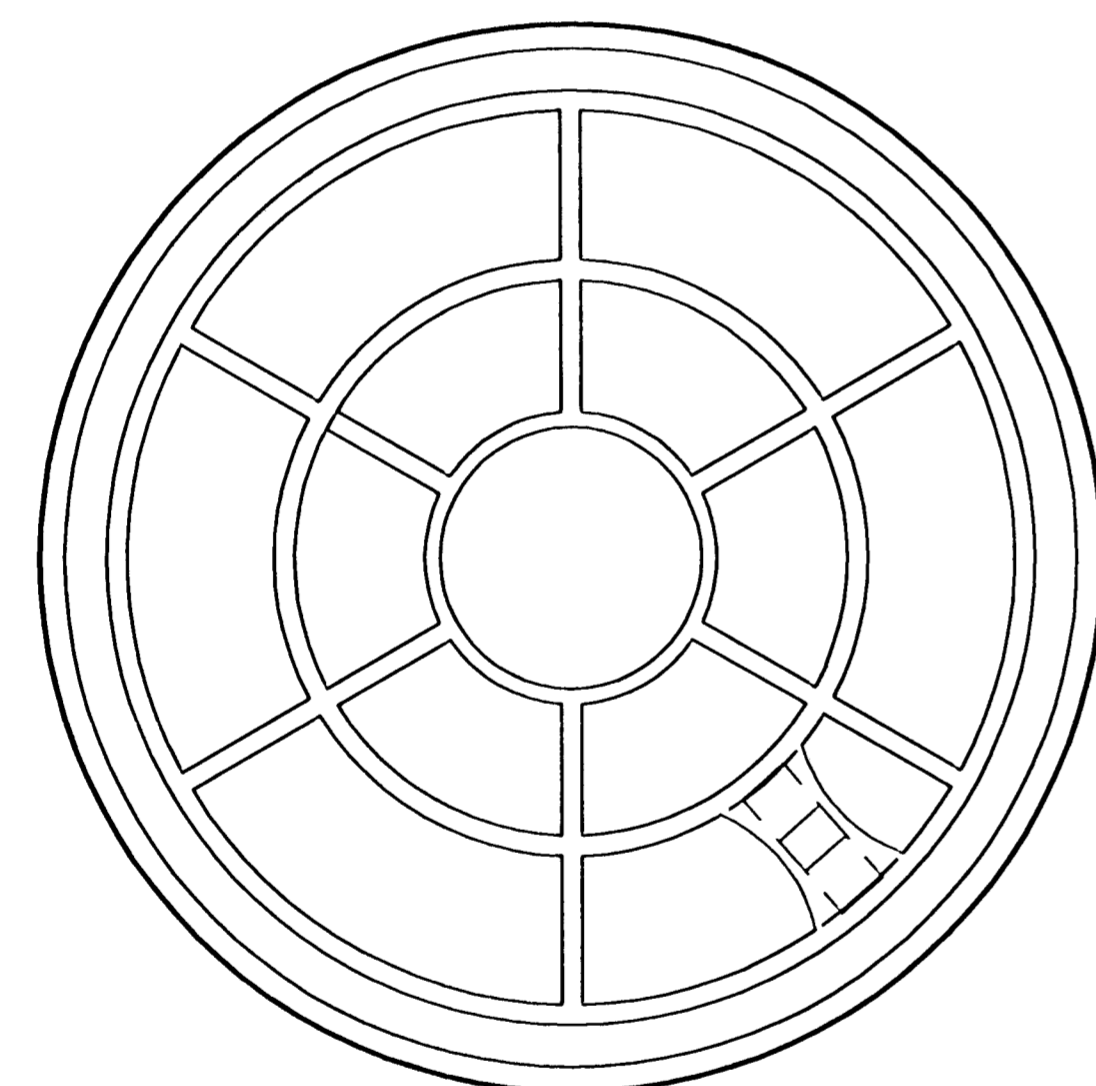
DESIGN STAFF DRAWN STAFF APPROVED STAFF DATE 6/03 SCALE NONE

SHEET **3** OF **7**

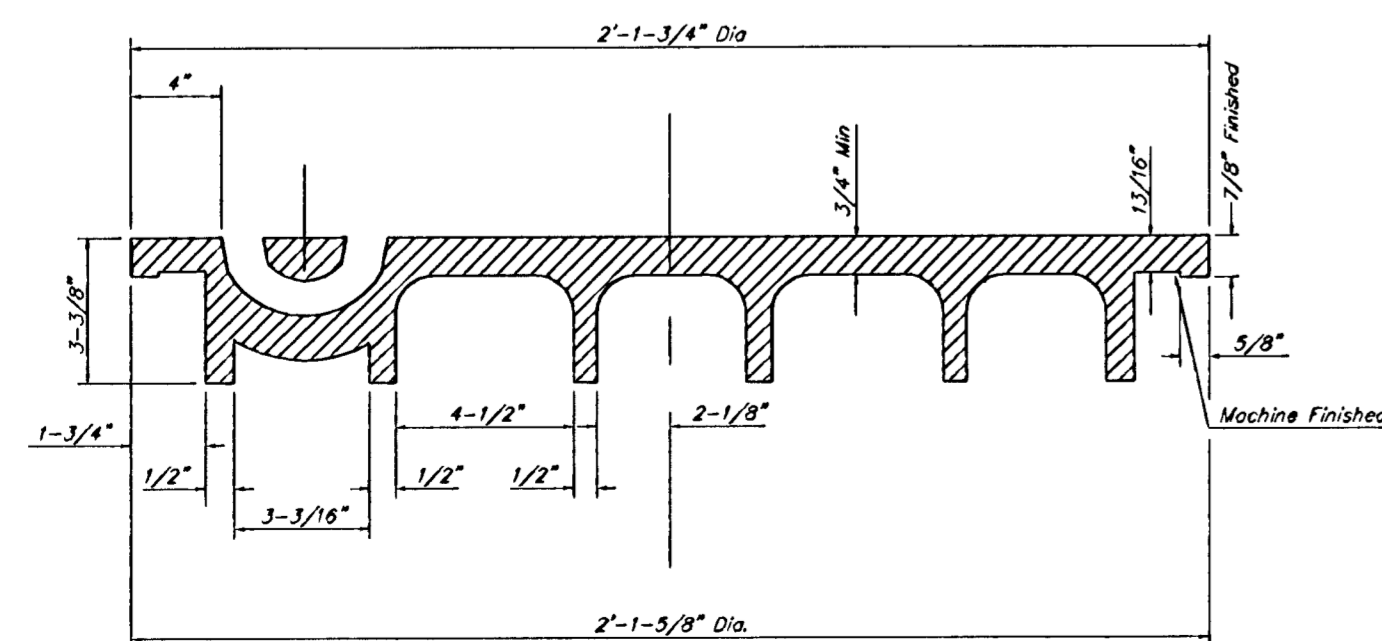
MANHOLE COVER
Weight = 180 Lbs.



TOP VIEW

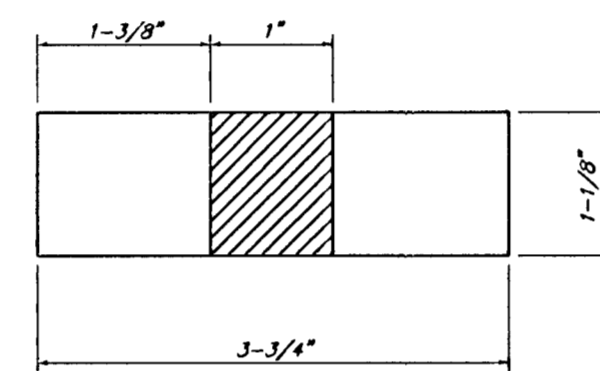


BOTTOM VIEW

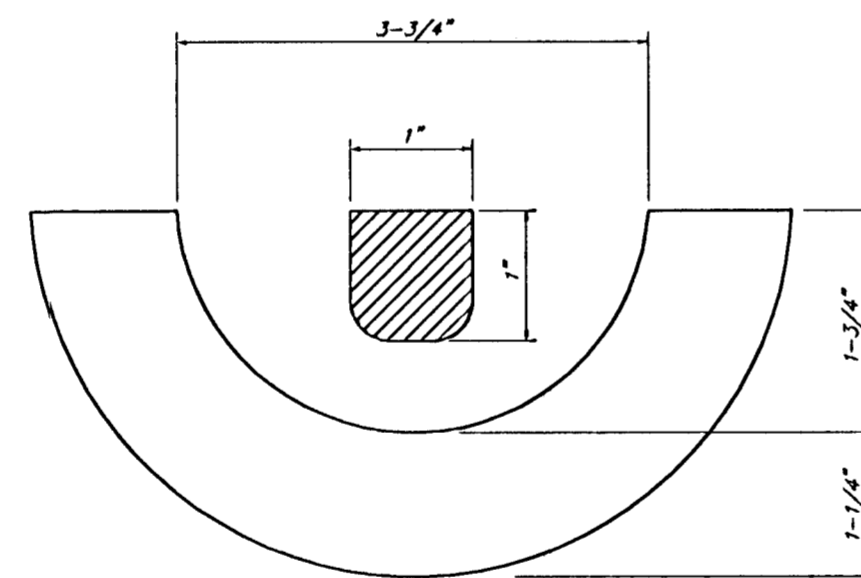


SECTION VIEW

PICKHOLE DETAIL



TOP VIEW

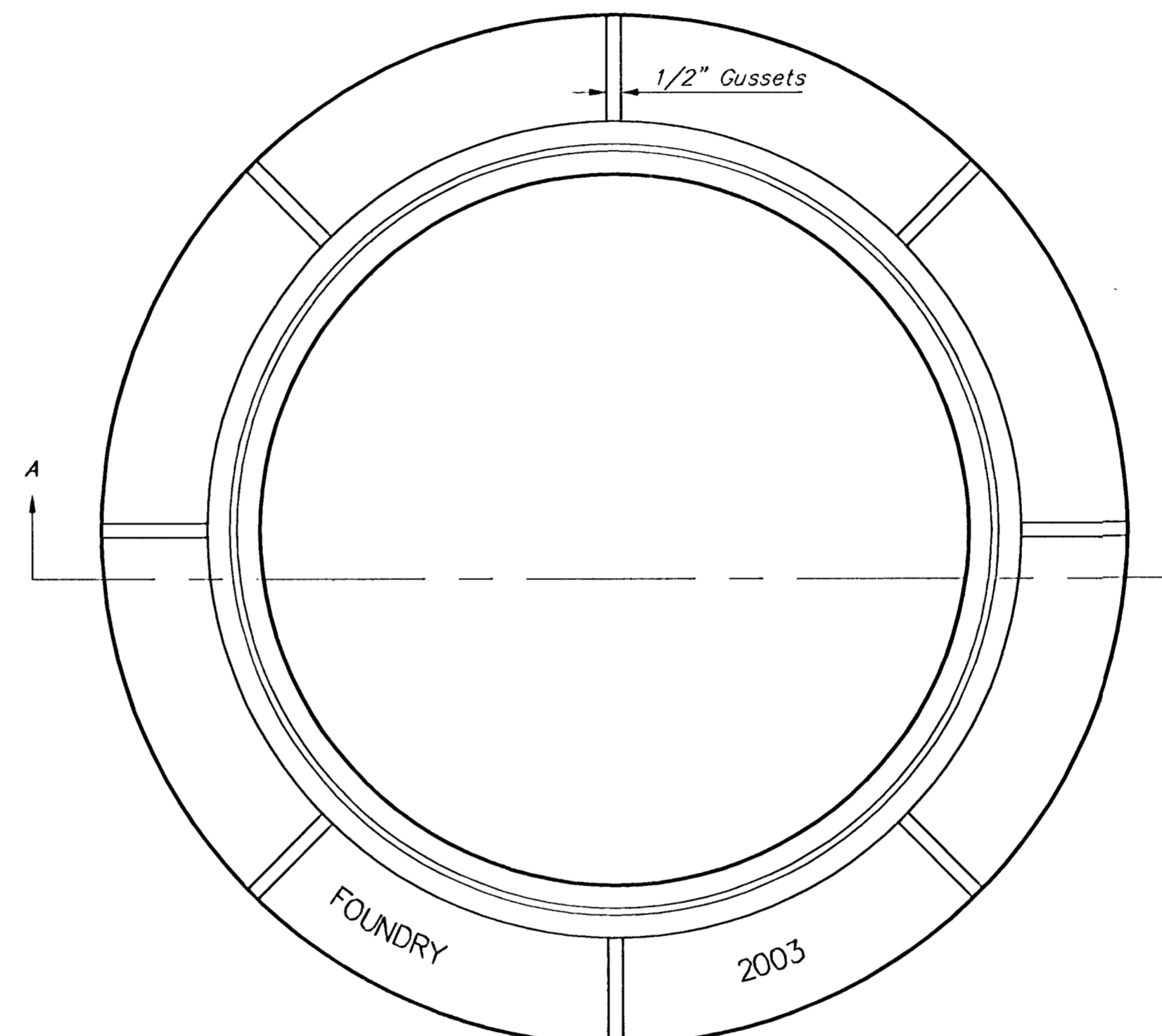


SECTION VIEW

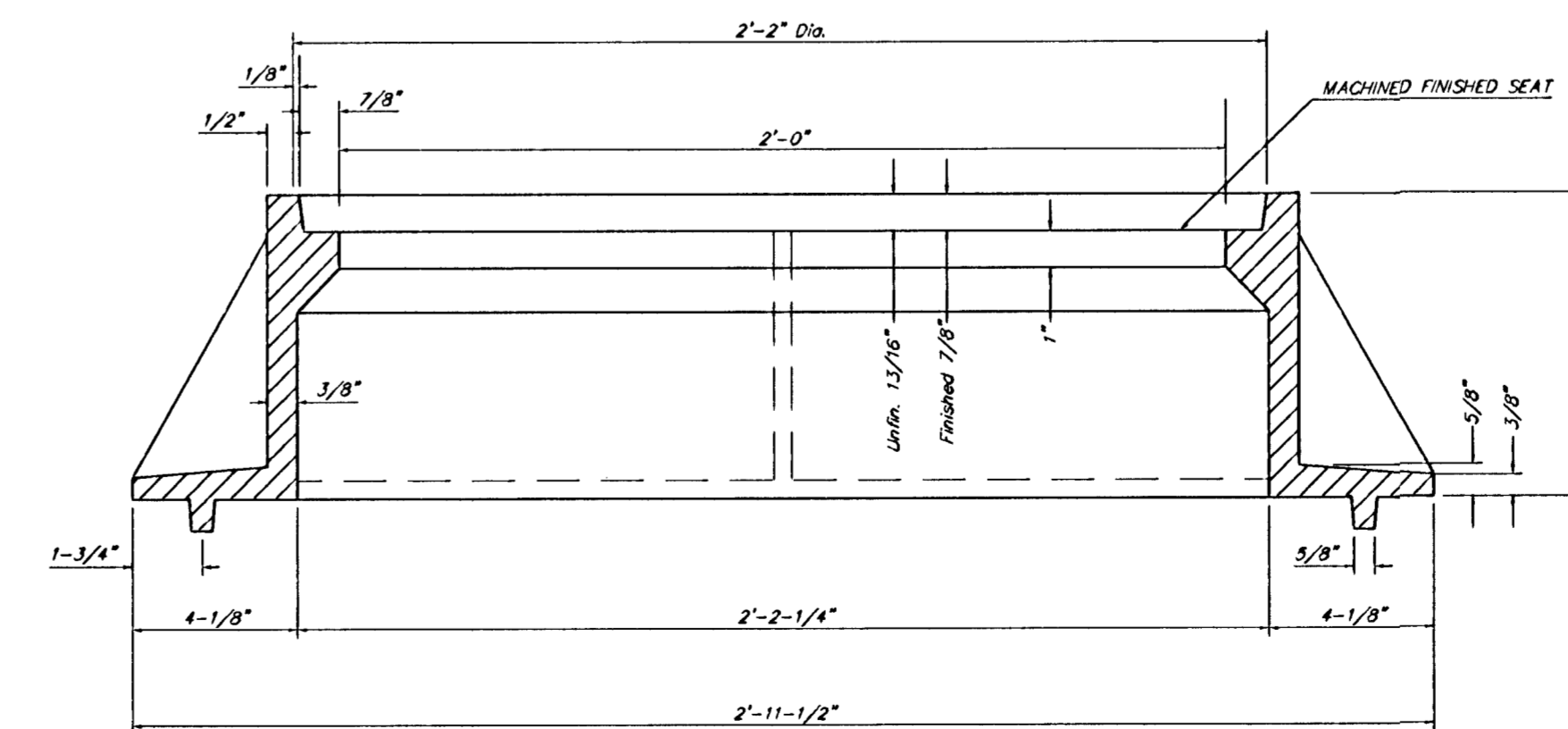
MANHOLE FRAME AND COVER DETAIL

ADOPTED AS STANDARD DESIGN BY
CITY OF WICHITA, KANSAS

MANHOLE FRAME
Weight = 145 Lbs.



TOP VIEW



SECTION A-A

GENERAL NOTES


MANHOLE CASTINGS SHALL BE MANUFACTURED USING GOOD QUALITY GRAY IRON CONFORMING TO CLASS 30 OF A.S.T.M. DESIGNATION A-48. DIMENSIONS AND WEIGHTS SHOWN ON THE DETAILED DRAWINGS SHALL BE CONSIDERED AS MINIMUM REQUIREMENTS AND ANY DEVIATIONS FROM THE DIMENSIONS SHOWN MUST BE SPECIFICALLY APPROVED. THE FINISHED CASTINGS SHALL BE OF UNIFORM QUALITY, FREE FROM BLOWHOLES, POROSITY, HARD SPOTS, SHRINKAGE DISTORTIONS OR OTHER DEFECTS.

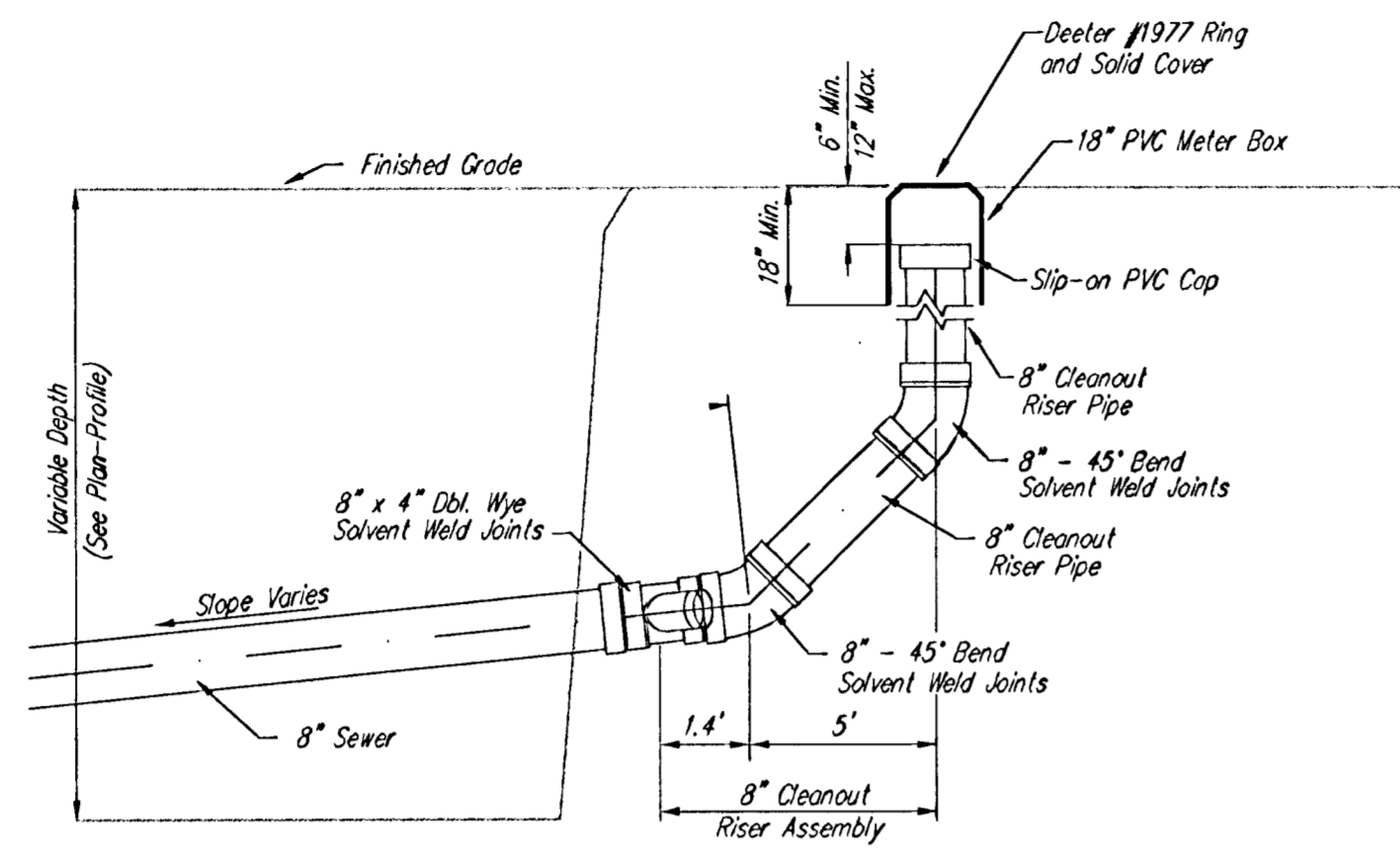
MANHOLE CASTINGS SHALL BE COATED WITH AN ASPHALT PAINT RESULTING IN A SMOOTH, TOUGH AND TENACIOUS COATING WHICH IS NOT BRITTLE OR TACKY.

MANHOLE CASTINGS SHALL BE MANUFACTURED SUCH THAT A COVER MANUFACTURED BY ANY ONE FOUNDRY WILL FIT INTERCHANGEABLY INTO A FRAME MANUFACTURED BY ANOTHER FOUNDRY AND STILL MEET ALLOWABLE CLEARANCES AND NON-ROCKING REQUIREMENTS. THIS WILL REQUIRE MANUFACTURING OF THE MATCHING FACES ON THE COVER AND THE FRAME TO CLOSE TOLERANCES.

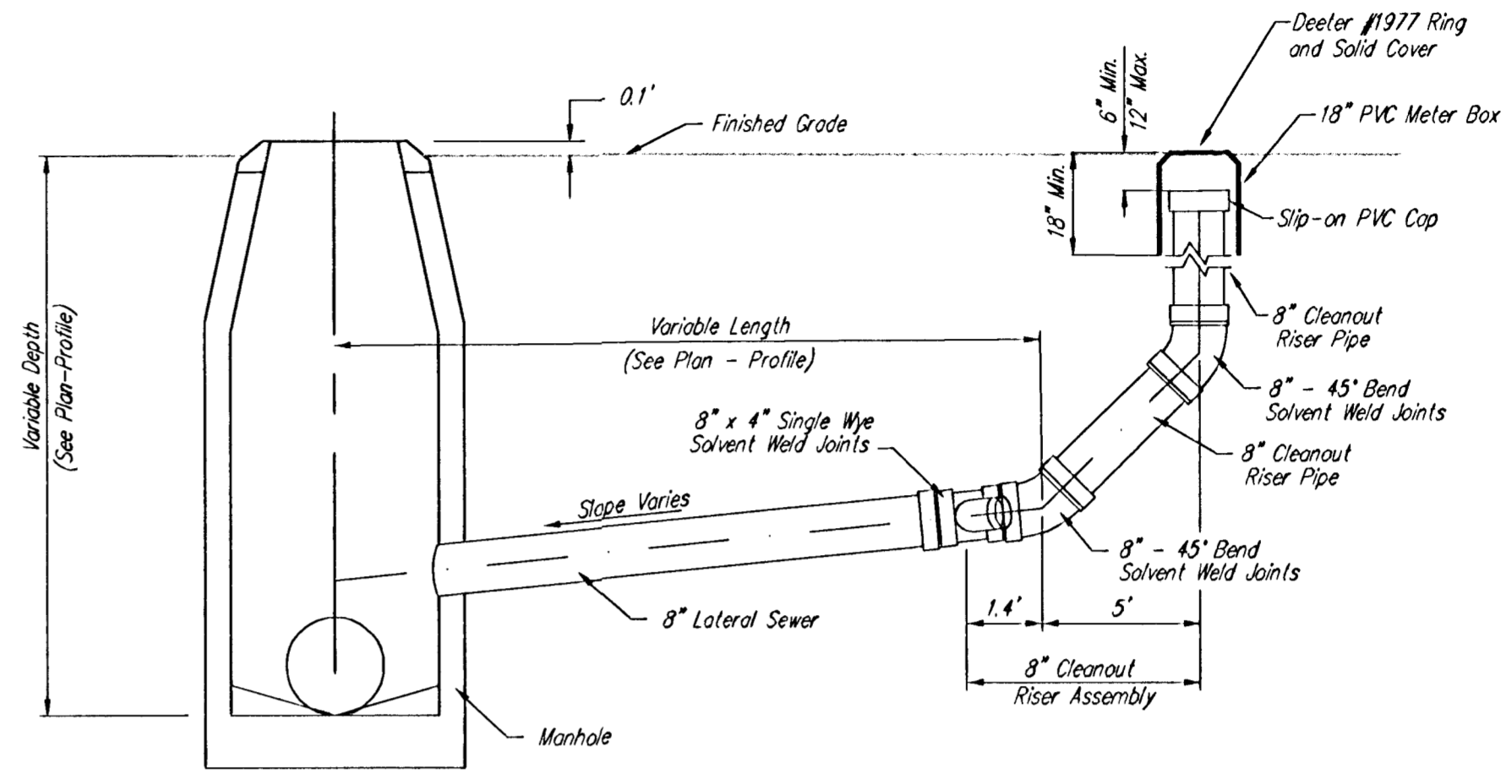
THE OUTSIDE CIRCUMFERENCE OF THE VERTICAL FACE OF THE COVER AND THE INSIDE CIRCUMFERENCE OF THE VERTICAL FACE IN THE FRAME RECESS SHALL BE MANUFACTURED TO TOLERANCES SUCH THAT THE CLEARANCE BETWEEN THE COVER AND FRAME WILL NOT EXCEED 1/8" AT ANY POINT AROUND THE CIRCUMFERENCE OF THE COVER. THE SEATING SURFACES BETWEEN THE COVER AND FRAME SHALL BE MACHINED SUCH AS THESE SURFACES SHALL MAKE FULL CONTACT FOR THEIR FULL CIRCUMFERENCE TO PRECLUDE THE COVER FROM ROCKING IN THE FRAME.

THE MANHOLE FRAME AND COVER SHALL BE MARKED WITH LETTERING INDICATING THE NAME OF THE MANUFACTURER AND THE YEAR WHEN THE COVER OR FRAME WAS CAST. THE COVER SHALL BE FURTHER IDENTIFIED WITH REGARDS TO OWNERSHIP USING LETTERS AT LEAST 1 INCH IN HEIGHT. THIS IDENTIFICATION SHALL BE "CITY OF WICHITA SEWER DEPARTMENT". THE WORD DEPARTMENT MAY BE ABBREVIATED. THE TEXTURE OF THE TOP SURFACE OF THE COVER SHALL BE MANUFACTURED IN A CHECKERED PATTERN DESIGN AS INDICATED ON THE DRAWINGS. SMOOTH BLOCKOUTS SHALL BE UTILIZED TO HIGHLIGHT THE LETTERING ON THE COVER SURFACE. THE TOTAL AREA OF SMOOTH SURFACE BLOCKOUT SHALL NOT EXCEED THE AREA AS INDICATED ON THE DRAWING. POSITIONING OF SMOOTH BLOCKOUTS AND LETTERING MAY VARY FROM THAT SHOWN ON THE DETAILED DRAWING.

MANHOLE FRAME AND COVER DETAIL				
ADOPTED AS STANDARD DESIGN BY CITY OF WICHITA, KANSAS				
 BAUGHMAN COMPANY P.A. ENGINEERING, SURVEYING, & PLANNING 316-262-7271 • 315 ELLIS • WICHITA, KANSAS 67211				
PROJECT NUMBER 488-83504				SHEET 4
DESIGN STAFF	DRAWN STAFF	APPROVED STAFF	DATE 6/03	SCALE NONE
				OF 7



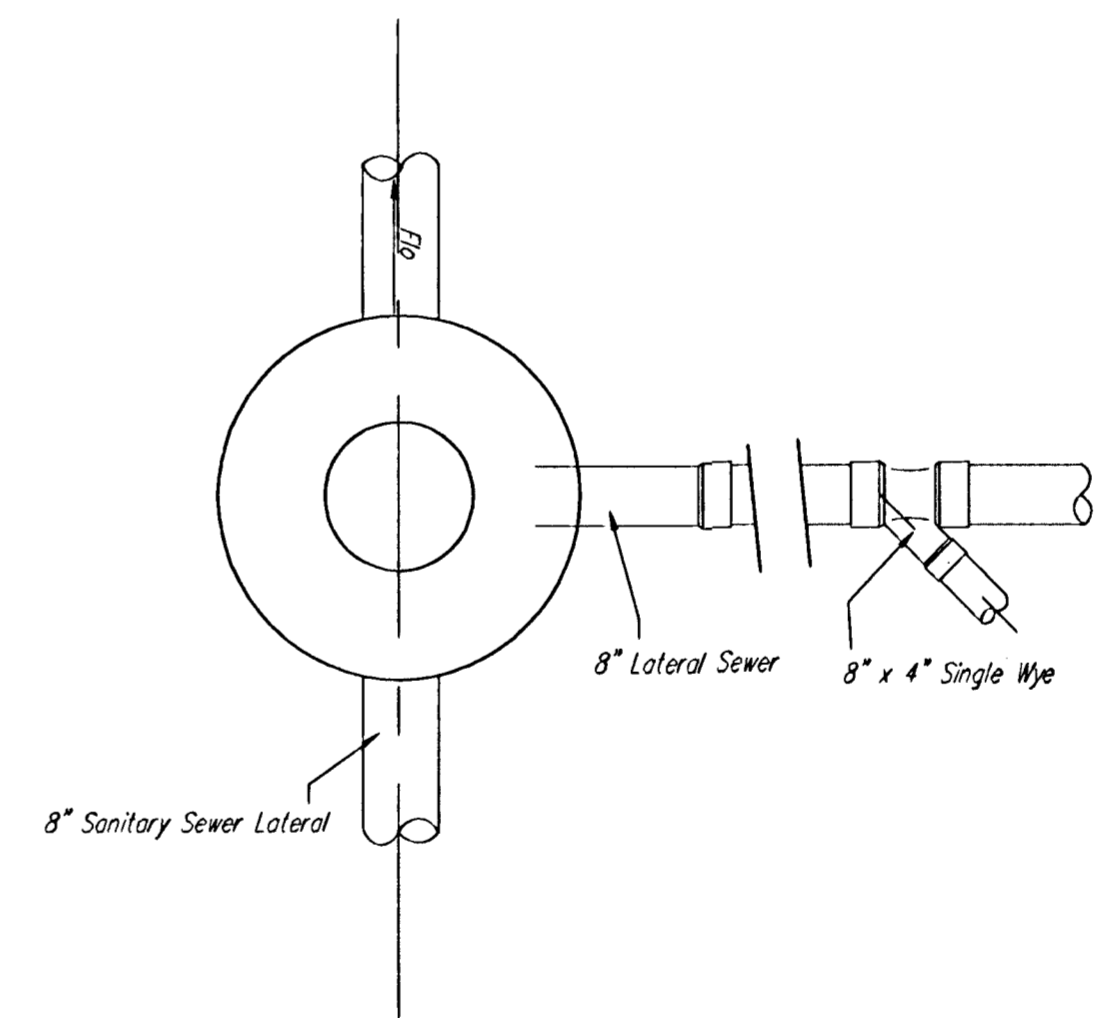
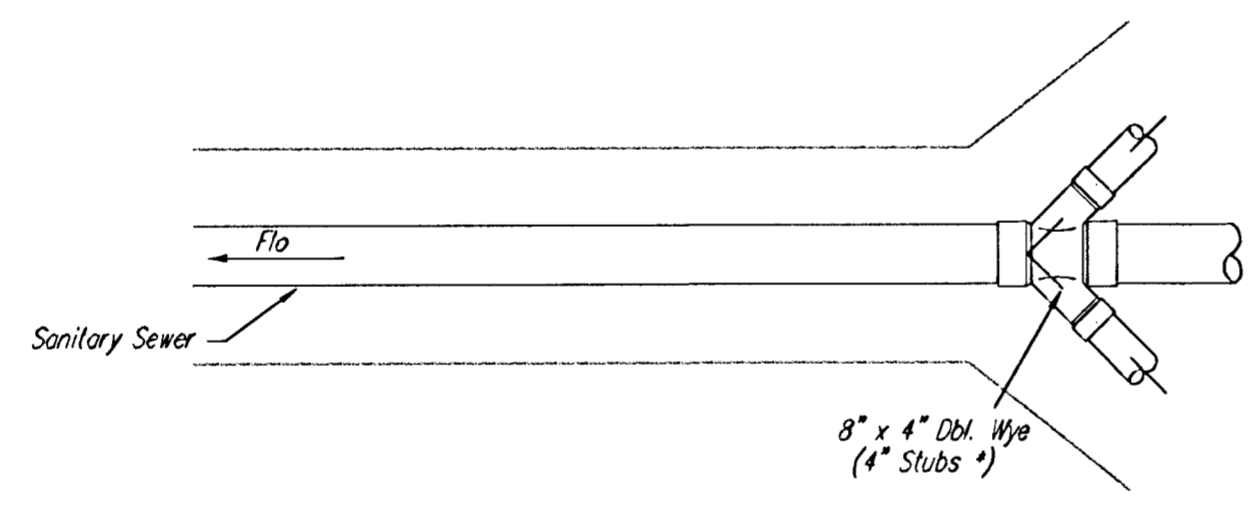
8" CLEANOUT RISER ASSEMBLY DETAIL
W/ WYE CONNECTION



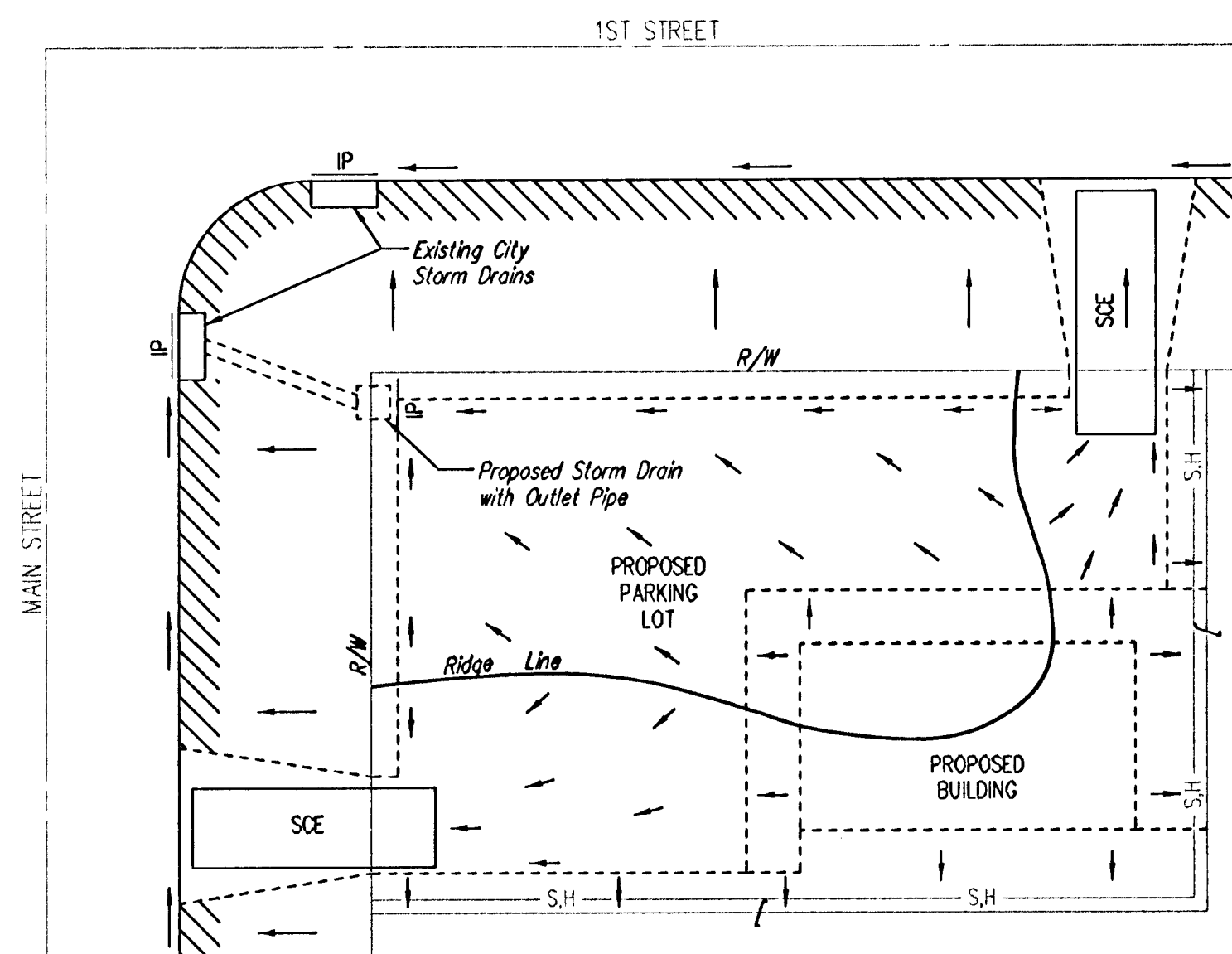
8" CLEANOUT RISER ASSEMBLY DETAIL
W/ MANHOLE CONNECTION

* 4" Branch (each side) To Serve as 4" Stub. Temporary Plug Until Service Connection is Required. Single Wye to be Used Where Indicated on Plan.

** 8" Lateral to be Air-Tested up to the Top of PVC Pipe, per Standard Specifications.



8" CLEANOUT RISER DETAIL				
CITY OF WICHITA				
BAUGHMAN COMPANY P.A.				
ENGINEERING, SURVEYING, & PLANNING				
318-262-7271 • 315 ELLIS • WICHITA, KANSAS 67211				
PROJECT NUMBER 488-83504				SHEET 5
DESIGN C.O.W.	DRAWN STAFF	APPROVED Staff	DATE 06/03	SCALE None
				OF 7

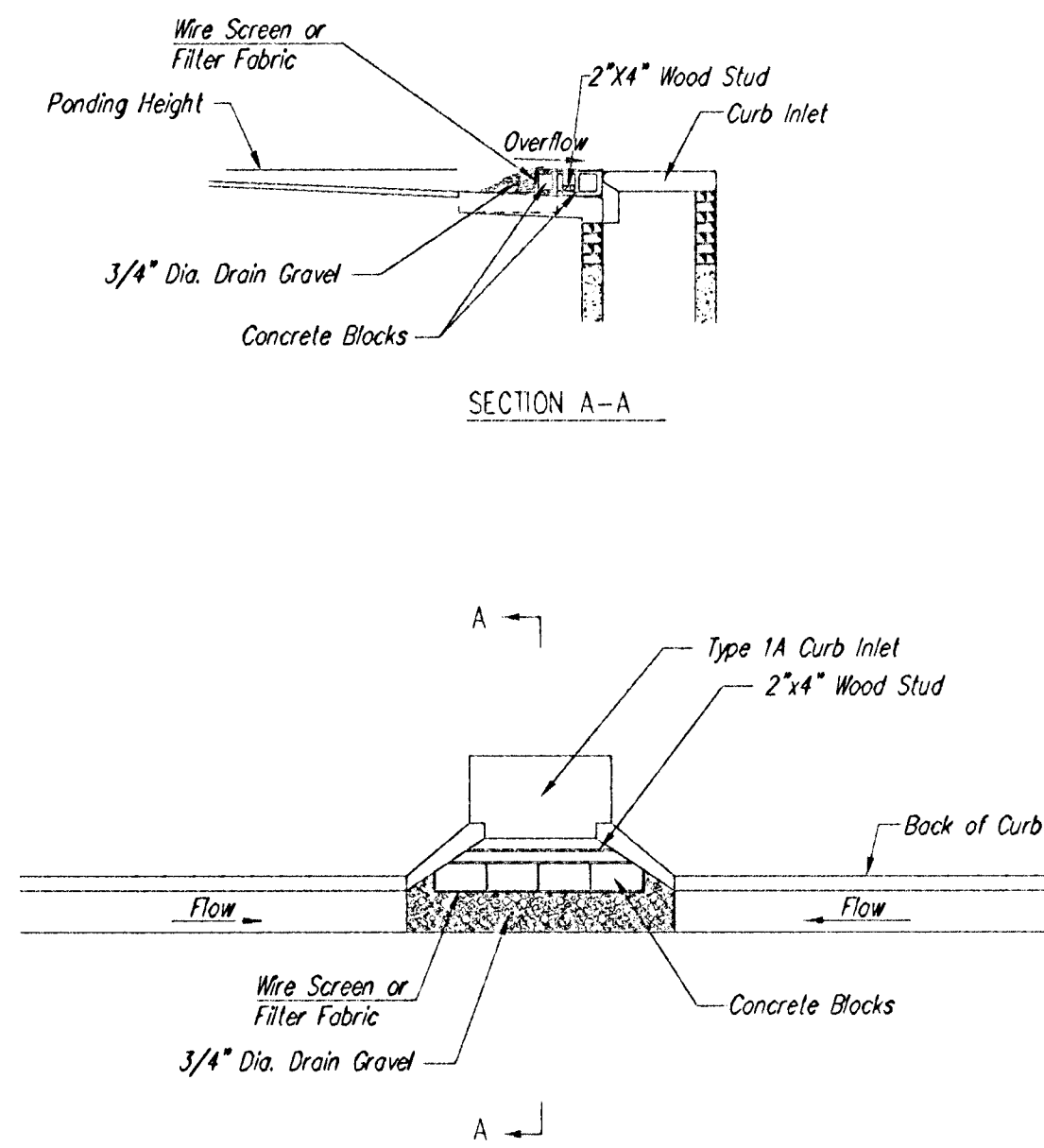


LEGEND

- Flow Direction
- IP Inlet Protection - to be provided at all inlets subject to silt laden runoff.
- S.H - Silt Fence or Hay Bale Barrier - to be installed along property lines where runoff from construction site can run onto other properties.
- SCE Stabilized Construction Entrance - to be used at all locations where vehicles or equipment enter or exit property.
- Back of Curb Protection - to be installed whenever curb is backfilled to less than 3 inches from top and disturbed earth exists adjacent thereto. (See City Standard Details.)

General Notes

1. This standard detail sheet is a part of your building permit. The BMP's shown on this sheet are considered minimum standards. Whenever sediment enters the streets, storm sewers, ditches, or ponds, contractor will install additional BMP's, as needed, to correct the problem.
2. Follow these general principals on all commercial building sides.
3. The soil erosion BMP's shown hereon must be in place at all times during construction until such time as the site is re-established with paving or grass.
4. Failure to install, protect, and maintain BMP's are violations of Section 16.32 of the City Code and will subject the contractor to the penalties provided therein. Included with your permit is an orange "notice" sign that must be posted on-site in a conspicuous place at all times during construction. This sign is provided to assist you in the maintenance of BMP's.
5. Back of Curb Protection: Can include hay bale, silt fence, or Curlex barrier, as shown on City BMP standard details. This BMP must remain in place until the area between the curb and right-of-way line has been permanently stabilized.
6. The General Contractor is responsible for the installation and maintenance of all BMP's.
7. Should the site abut a lake, BMP's will be installed to prevent sediment from entering the lake.
8. Any mud inadvertently tracked onto any street will be cleaned up by the general contractor at the end of each day's work.



CURB INLET GRAVEL FILTERS
(INLET PROTECTION-RESIDENTIAL STREETS ONLY)

NOTE: Other types of curb inlet protection may be approved by the city so long as equal protection is provided.

A gravel inlet filter shall be installed at sump locations on residential streets. This type of protection is not to be used on arterial or collector streets at any time that it would pose an undue traffic hazard.

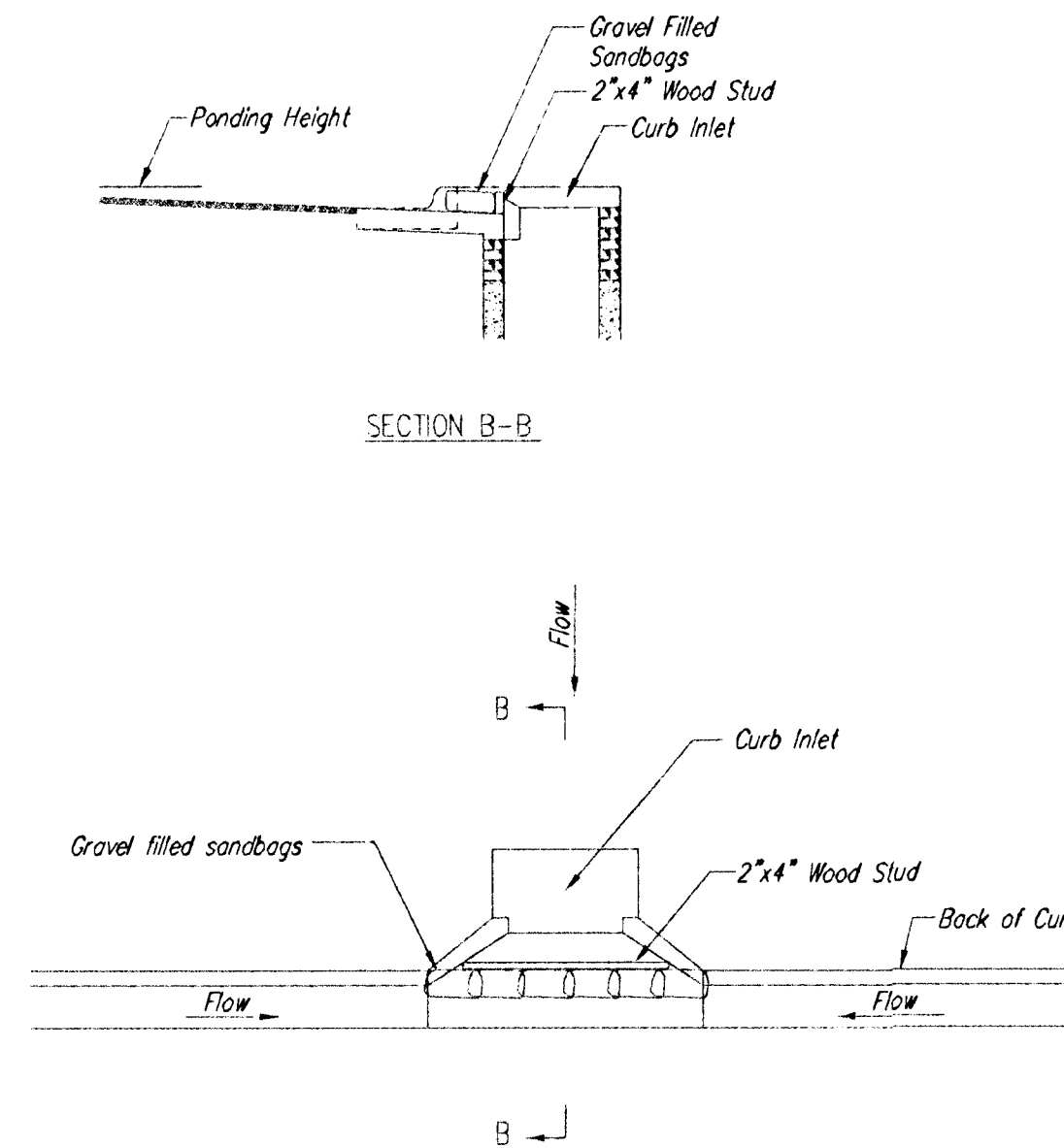
Instructions for Installing:

- STEP 1: Place concrete blocks around the inlet as shown on drawing. Insert 2x4 board as shown.
- STEP 2: Wrap 1/2" mesh wire screen around the concrete blocks.
- STEP 3: Place 1" to 1-1/2" diameter rock around the blocks and wire screen. Be sure the rock extends down from the top of the concrete block.
- STEP 4: To prevent damage to vehicles, signs warning drivers about the structures may be necessary. An alternative installation is the use of gravel bags supported by a 2"x4" board to prevent collapsing.

Use of rock with diameters smaller than 1" in the bag may result in clogging of pores and reduce the amount of water flowing into an inlet.

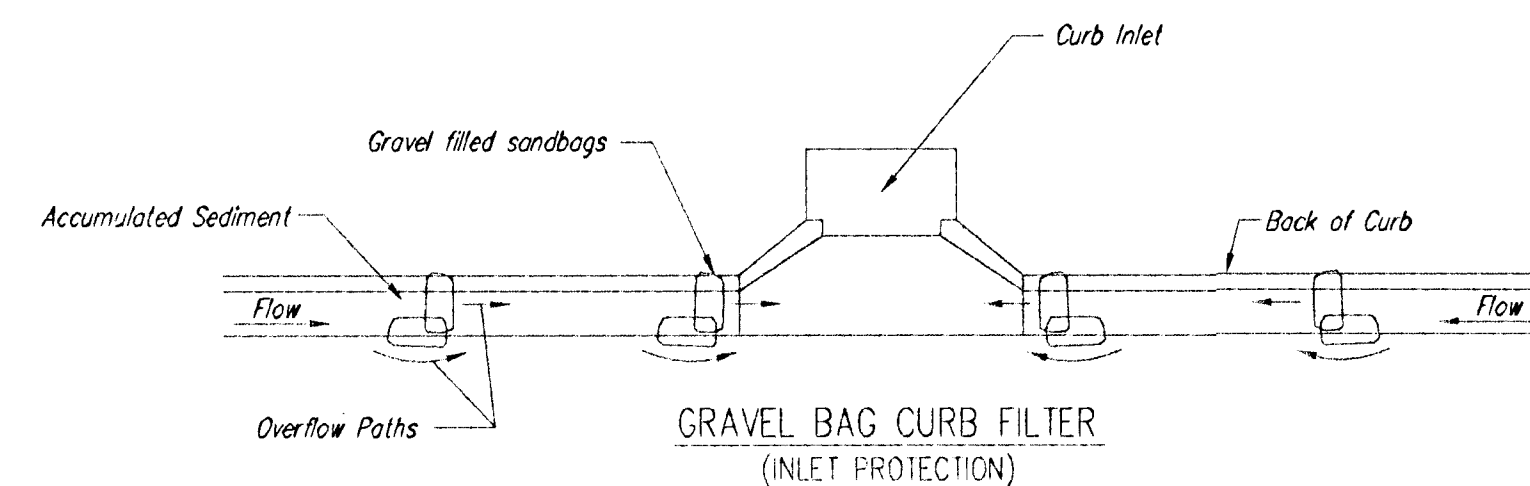
Maintenance:

All curb inlet gravel filters shall be inspected and repaired after each runoff event. Sediment deposits are to be removed once material is within 8 cm (3 inches) of the top of any block. Periodically, the gravel shall be raked to increase infiltration and filtering of runoff waters. Accumulated sediment is to be removed immediately from roads and streets.



CURB INLET SANDBAG FILTERS
(INLET PROTECTION)

NOTE: Other types of curb inlet protection may be approved by the City so long as equal protection is provided.



GRAVEL BAG CURB FILTER
(INLET PROTECTION)

NOTE: Place two or more sets of bags in a manner that results in maximum support. The flow line bag must be lower than top of curb.

CURB SEDIMENT TRAPS:

When inlets are located on streets having a grade (i.e., sump conditions do not exist), installing gravel (or sand) bags in the gutter flow line to create small sediment traps can be considered. Gravel bags are recommended over sand bags to allow for drainage.

If the spacing between bags becomes too large, little sediment may be trapped. Spacing of bags should be completed using the table or graph that illustrates placement distances based upon street slope. When installed in the gutter, bag tops must be lower than the sidewalk.

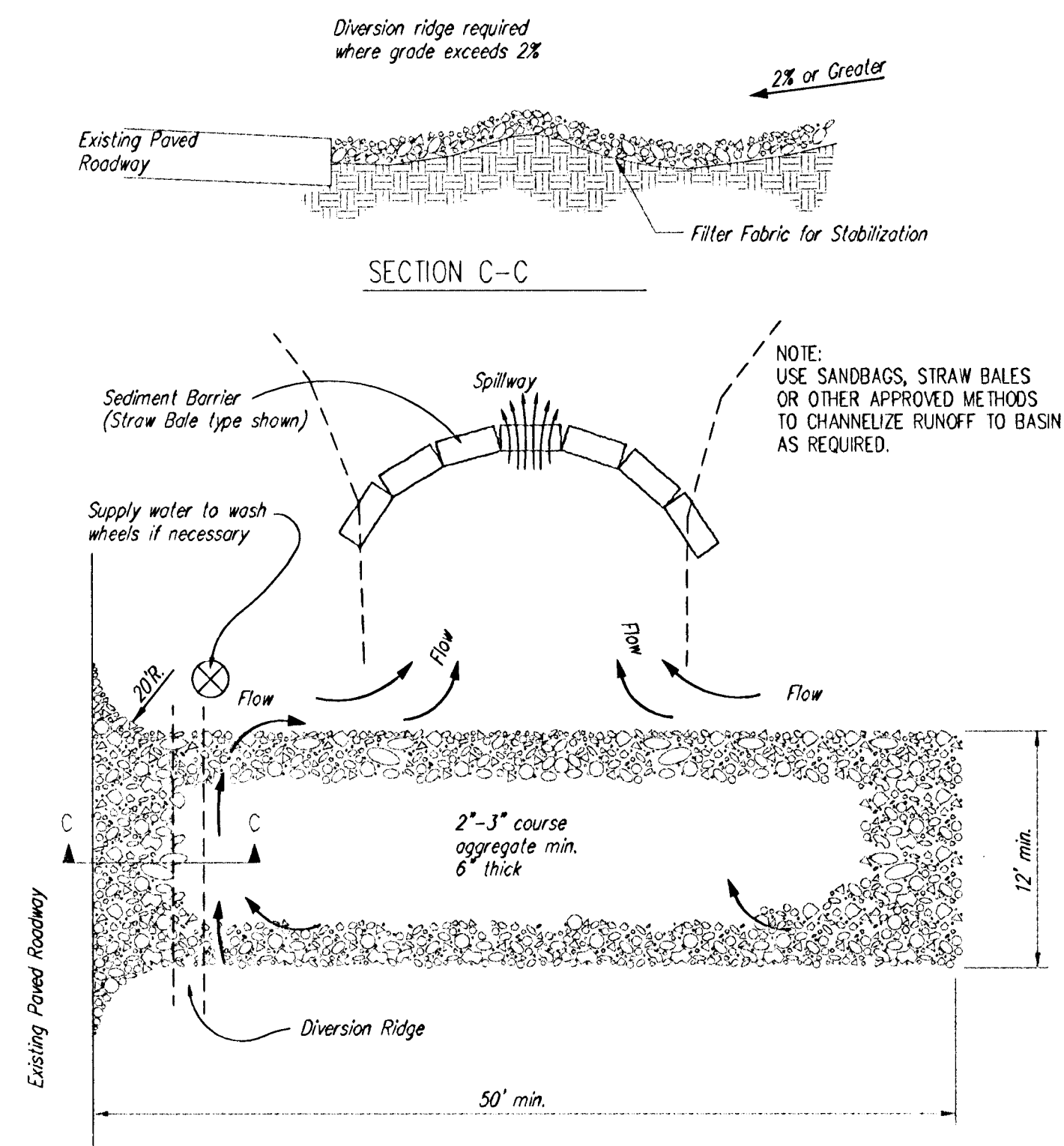
Spacing:

Gravel bags are to be placed according to street grades using the following table or graph that appears below.

GRADE (%)	SPACING (FEET)
0.5	75
1.0	45
2.0	18
3.0	12
4.0	9
5.0	6

Maintenance:

Collected sediment shall be removed after every runoff event. Bags that are destroyed by vehicular traffic or through natural deterioration are to be immediately replaced.



STABILIZED CONSTRUCTION ENTRANCE

NOTES:

1. THE ENTRANCE SHALL BE MAINTAINED IN A CONDITION THAT WILL PREVENT TRACKING OR FLOWING OF SEDIMENT ONTO PUBLIC RIGHTS-OF-WAY. THIS MAY REQUIRE TOP DRESSING, REPAIR AND/OR CLEANOUT OF ANY MEASURES USED TO TRAP SEDIMENT.
2. WHEN NECESSARY, WHEELS SHALL BE CLEANED PRIOR TO ENTRANCE ONTO PUBLIC RIGHT-OF-WAY.
3. WHEN WASHING IS REQUIRED, IT SHALL BE DONE ON AN AREA STABILIZED WITH CRUSHED STONE THAT DRAINS INTO AN APPROVED SEDIMENT TRAP OR SEDIMENT BASIN, AS SHOWN ABOVE.
4. DRIVE ENTRANCES ONTO RESIDENTIAL LOTS WILL NOT BE REQUIRED TO HAVE THE SEDIMENT BARRIER SHOWN, BUT WHEEL WASHING MAY BE REQUIRED IF STABILIZED ENTRANCE IS NOT SUFFICIENT TO KEEP MUD FROM BEING TRACKED ONTO ADJACENT STREET. ENTRANCE SHALL EXTEND FROM BACK OF CURB TO DWELLING.



**SOIL EROSION
BMP DETAILS**

CHRISTOPHER M. CARRIER, P.E.
STORM WATER ENGINEER

PROJECT NUMBER 468-83504 OCA NO. 743957

DATE 06/03 SHEET 6 OF 7

WOODS EDGE

AN ADDITION TO WICHITA, SEDGWICK COUNTY, KANSAS

MINIMUM BUILDING PAD ELEVATIONS FOR LOWEST OPENING TO THE STRUCTURES		
LOT	BLOCK	ELEVATION
1	A	148.1
2	A	148.1

NOTE:
A master grading plan for drainage has been developed for this subdivision and is on file with the City of Wichita, Kansas. All drainage easements, rights-of-way, or reserves shall remain at established grades or as modified with the approval of the City Engineer of the City of Wichita, Kansas. No obstructions which impede the flow of this drainage system shall be allowed.

BENCHMARKS:

"1" CUT - TOP OF CURB AT N. END OF CURB RETURN, N. OF THE "NE COR. OF RESERVE "B" (S. SIDE OF LOST CREEK CIRCLE), LOST CREEK ESTATES, WICHITA, KANSAS.
ELEV. = 148.34 CITY DATUM
1335.74 NG1029

"2" CUT - TOP OF CURB, NORTH OF INLET AT SE CORNER OF PLAT.
ELEV. = 141.32 CITY DATUM
1334.22 NG1029

119TH ST. W. & LOST CREEK CR. (COWSKIN) - CITY OF WICHITA BENCHMARK DISC.
175' N. OF LOST CREEK CIRCLE
SE COR. OF RCB.
SOUTH END OF HURDWARD
ELEV. = 151.82 CITY DATUM
1339.22 NG1029

NOTE:
Portions of this property have been removed from the Special Flood Hazard Area (SFHA), by Letter of Map Revision, Based on FIRM (LOMR-F), Case #02-07-180A, effective date February 27, 2002. Construction projects on this property shall conform to any and all conditions of this LOMR-F.

State of Kansas) SS
Sedgwick County) We, Baughman Company, P.A., Surveyors in aforesaid county and state do hereby certify that we have surveyed and platted "WOODS EDGE", an Addition to Wichita, Sedgwick County, Kansas and that the accompanying plat is a true and correct exhibit of the property surveyed, described as beginning at the NE corner of the SE 1/4 of Sec. 13, Twp. 27-S, R-2-W of the 6th P.M., Sedgwick County, Kansas; thence south 149.75 feet, more or less, to a point 2492.5 feet north of the SE corner of said SE 1/4; thence west parallel with the south line of said SE 1/4, 217.8 feet; thence south parallel with the east line of said SE 1/4, 100 feet; thence west parallel with the south line of said SE 1/4, 217.8 feet; thence north parallel with the east line of said SE 1/4, 251.79 feet, more or less, to the north line of said SE 1/4; thence east 435.6 feet to beginning, except the east 35 feet for road.

Existing public easements and dedications being vacated by virtue of K.S.A. 12-512(b).

Baughman Company, P.A.

_____, Surveyor
Michael G. Conrey

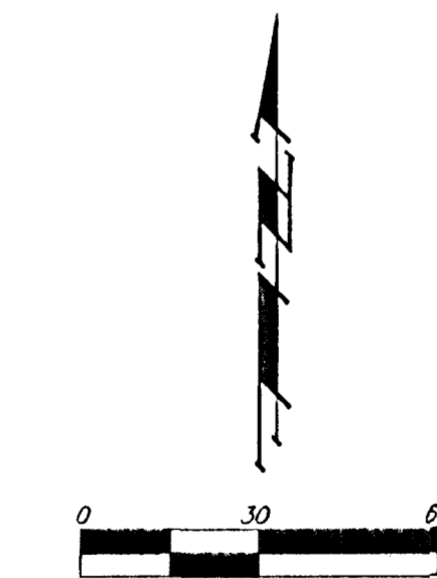
Know all men by these presents that we, the undersigned, have caused the land in the surveyors certificate to be platted into Lots, a Block, a Street, and a Reserve, to be known as "WOODS EDGE", an Addition to Wichita, Sedgwick County, Kansas. The utility easements are hereby granted as indicated for the construction and maintenance of all public utilities. The drainage and utility easement is hereby granted as indicated for drainage purposes and for the construction and maintenance of all public utilities. The drainage reserve is hereby reserved for drainage purposes and shall be the responsibility of the owners of Lots 1 and 2, Block A, respectively, until such time as the appropriate governing body elects to assume the responsibility for maintenance and improvements to the drainage. No buildings shall be constructed or placed on or within said drainage reserve, nor shall any fill, change of grade, creation of channel or any other work be carried on without the permission of the Engineer for the appropriate governing body. The street is hereby dedicated to and for the use of the public. Reserve "A" is hereby reserved for a private street, open space, landscaping, drainage purposes, and for utilities as confined to easement. Reserve "A" shall be owned and maintained by the owner of Lot 1, Block A. Lots 1, 2, and 3, Block A, shall have access rights to 119th Street West, by rights of Reserve "A". Access controls shall be as depicted on the face of the plat and are hereby granted to the City of Wichita, Kansas. The permitted opening location shall be as determined by the City Engineer of the City of Wichita, Kansas. The Minimum Building Pad Elevations for the lowest opening to the structures shall be as indicated on the face of the plat.

James E. Goolsby Sharon K. Goolsby

State of Kansas) SS
Sedgwick County) The foregoing instrument acknowledged before me, this _____ day of _____, 2002, by James E. Goolsby and Sharon K. Goolsby, husband and wife.

_____, Notary Public
My App't. Exp. _____

PP □ = Power Pole
O/E = Guy Anchor
LP ○ = Light Pole



■ = #4 REBAR W/ "BAUGHMAN" CAP (FOUND)
◊ = #4 REBAR W/ "ARMSTRONG" CAP (FOUND)
⊗ = 3/4" IRON (FOUND)
⊙ = #5 REBAR IN THIMBLE (FOUND)
○ = 1/2" IRON (FOUND)
□ = #8 REBAR IN THIMBLE (FOUND)
△ = 60# GAL. W/ "BAUGHMAN" CAP IN TOP OF HEDGE FENCE POST (FOUND)

(M) = MEASURED
(D) = DESCRIBED
(P) = PLATTED
(C) = CALCULATED
(C-D) = CALCULATED PER DESCRIBED INFO.

This plat of "WOODS EDGE", an Addition to Wichita, Sedgwick County, Kansas has been submitted to and approved by the Wichita-Sedgwick County Metropolitan Area Planning Commission, Wichita, Kansas.

Dated this _____ day of _____, 2002.
Wichita-Sedgwick County Metropolitan Area Planning Commission

_____, Chair
J. D. Michaelis

_____, Secretary

This plat approved and all dedications shown hereon accepted by the City Council of the City of Wichita, Kansas, this _____ day of _____, 2002.

At the direction of the City Council

_____, City Manager
Chris Cherches

_____, City Clerk
Pat Burnett

Reviewed in accordance with K.S.A. 58-2005 on this _____ day of _____, 2002.

Tricia L. Robello, L.S. #1246
Deputy County Surveyor
Sedgwick County, Kansas

Entered on transfer record this _____ day of _____, 2002.

_____, County Clerk
Don Brace

State of Kansas) SS
Sedgwick County) This is to certify that this plat has been filed for record in the office of the Register of Deeds, this _____ day of _____, 2002 at _____ o'clock _____ M; and is duly recorded.

_____, Register of Deeds
Bill Meek

_____, Deputy
Linda Kizzire