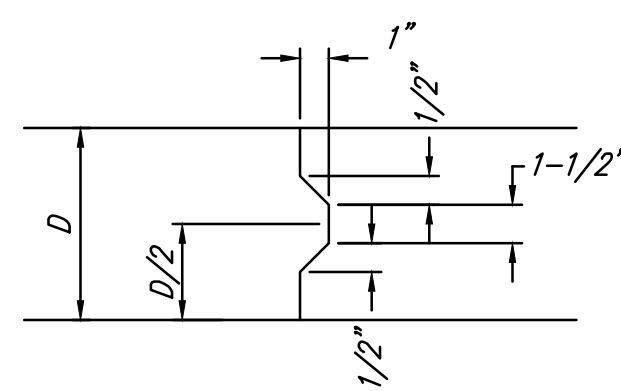
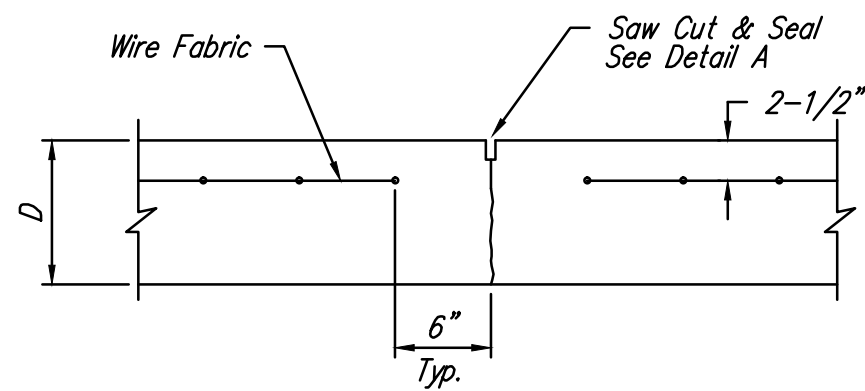


**EXPANSION JOINT**

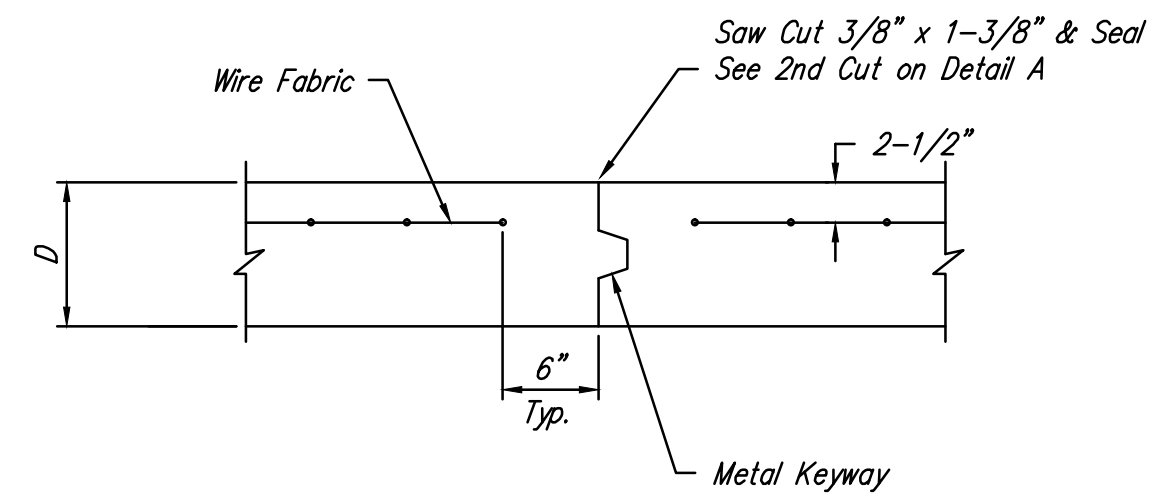
NOTE: Extra Thickness to be Subsidiary to Price of Square Yards Pavement



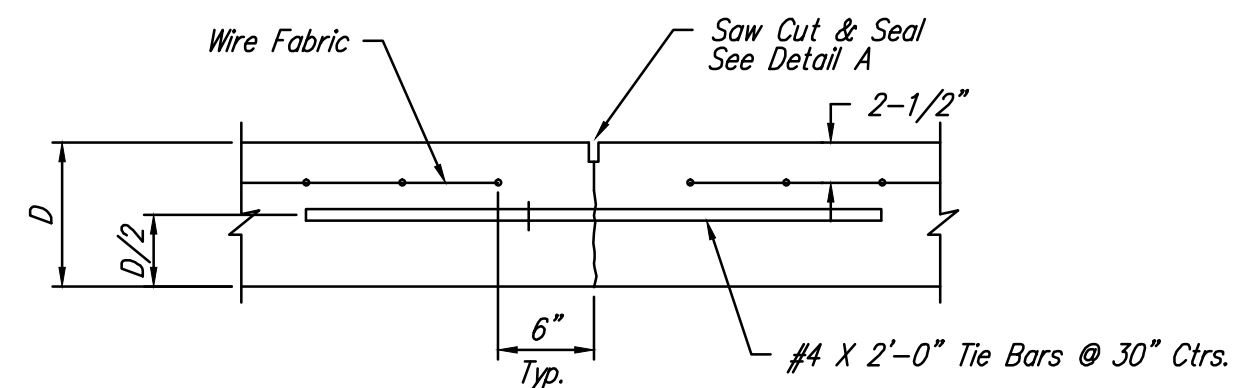
**KEYWAY DETAIL**



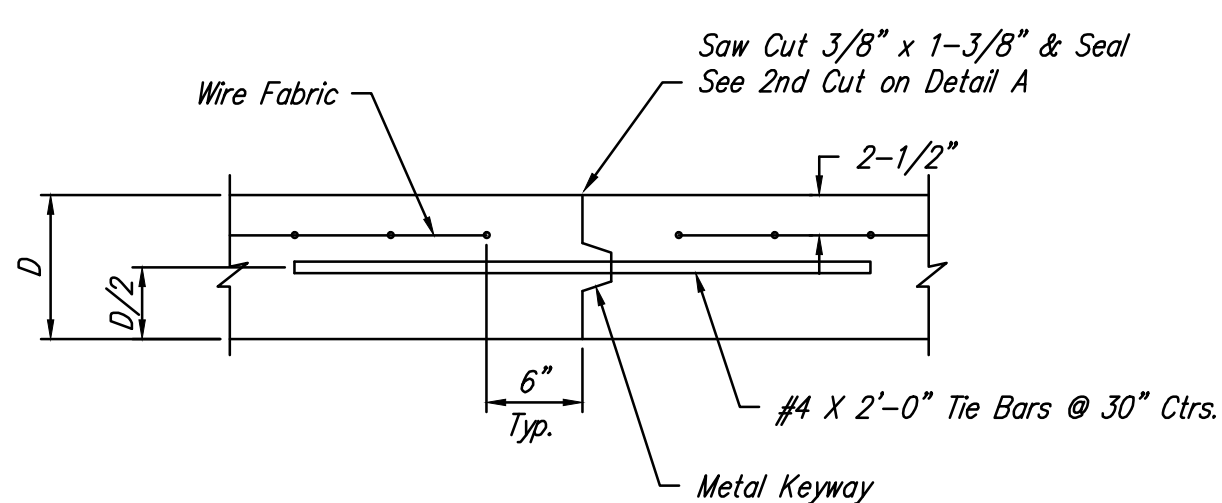
**CONTRACTION JOINT DETAIL (C.J.)**



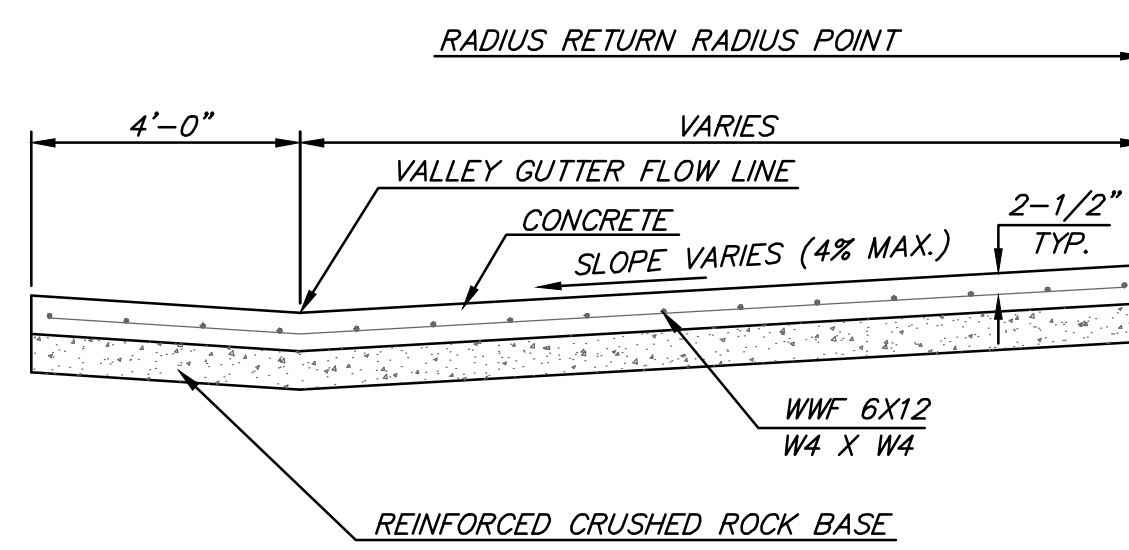
**OPTIONAL CONTRACTION JOINT**



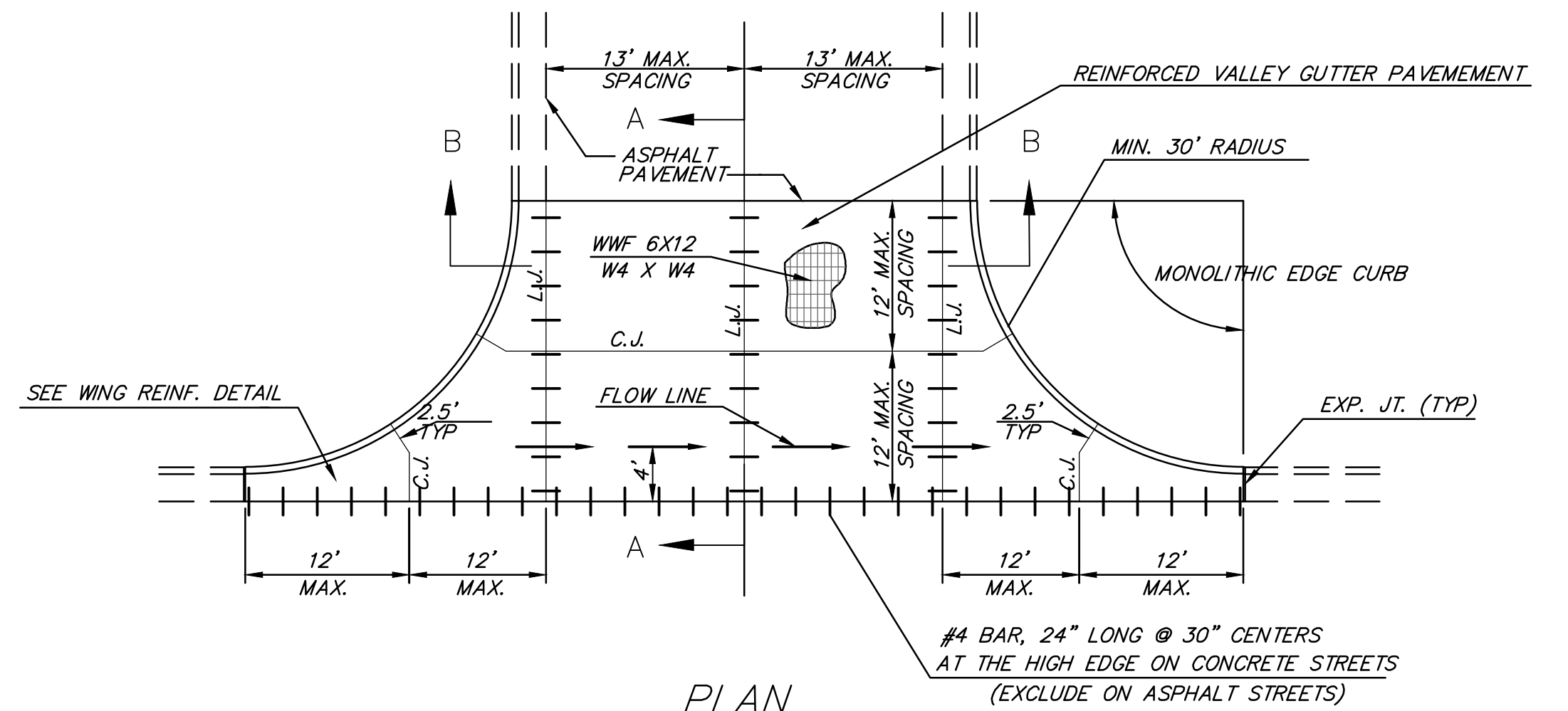
**LONGITUDINAL JOINT DETAIL (L.J.)**



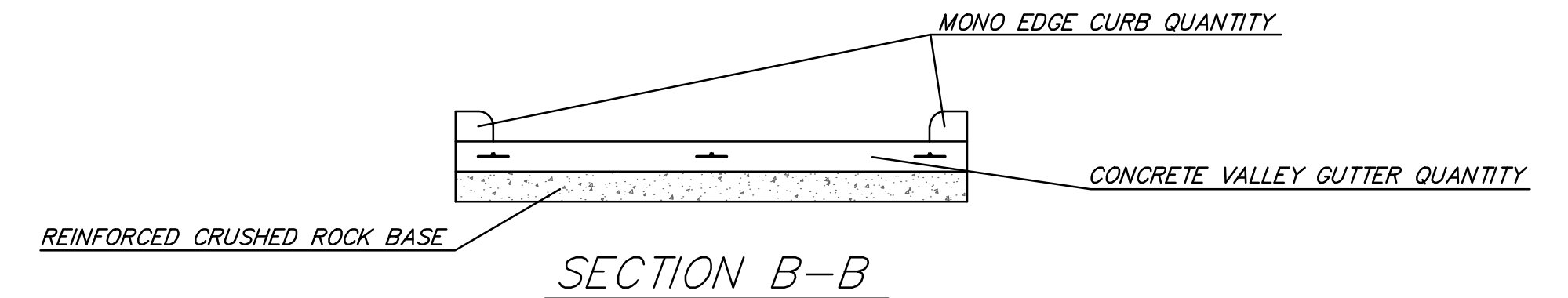
**OPTIONAL LONGITUDINAL JOINT DETAIL (L.J.)**



**SECTION A-A**

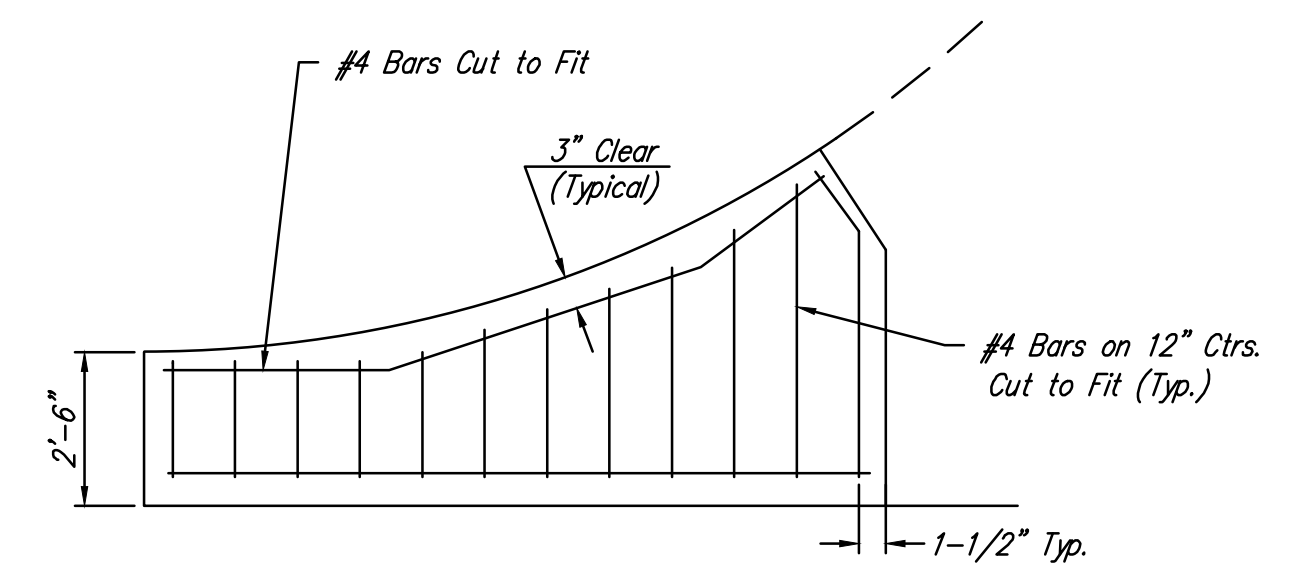


**PLAN**

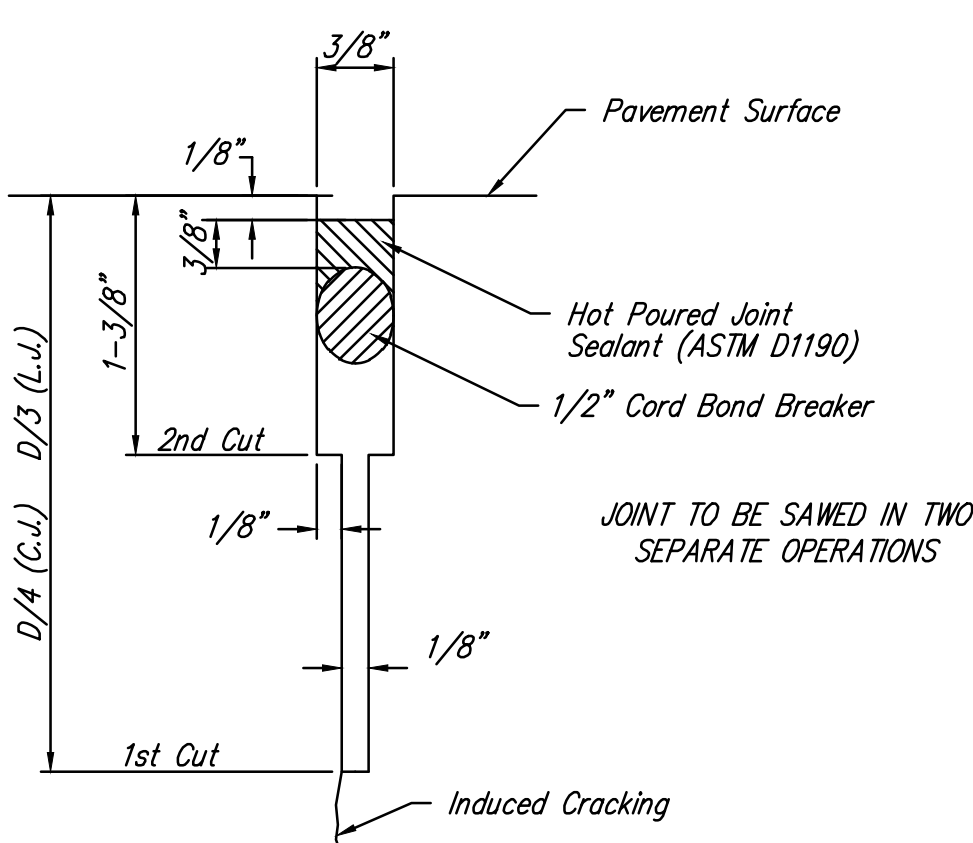


**SECTION B-B**

**REINFORCED VALLEY GUTTER DETAIL**



**WING REINFORCING DETAIL**



**SAW JOINT DETAIL (DETAIL A)**

REVISED: NOVEMBER 2015

|   |  |                      |                                |
|---|--|----------------------|--------------------------------|
| <p><b>CITY OF WICHITA</b><br/>PUBLIC WORKS &amp; UTILITIES<br/>ENGINEERING DIVISION</p> | <b>VALLEY GUTTER DETAILS</b>   |                      |                                |
|   | CITY ENGINEER<br><b>GARY JANZEN, P.E.</b>  |                      |                                |
|   | PROJECT NUMBER<br>472-85320  | OCA NUMBER<br>766378 | DATE<br>Feb 2017               |
|   | CITY ENGINEER'S OFFICE<br>CITY HALL - SEVENTH FLOOR<br>455 NORTH MAIN STREET<br>WICHITA, KANSAS 67202-1620<br>(316) 268-4501 |                      | SHEET<br><b>3</b><br><b>20</b> |