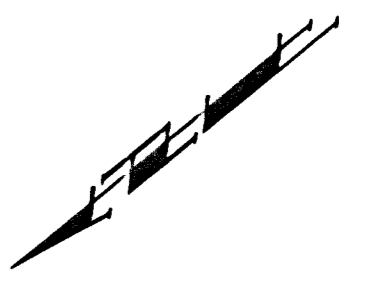
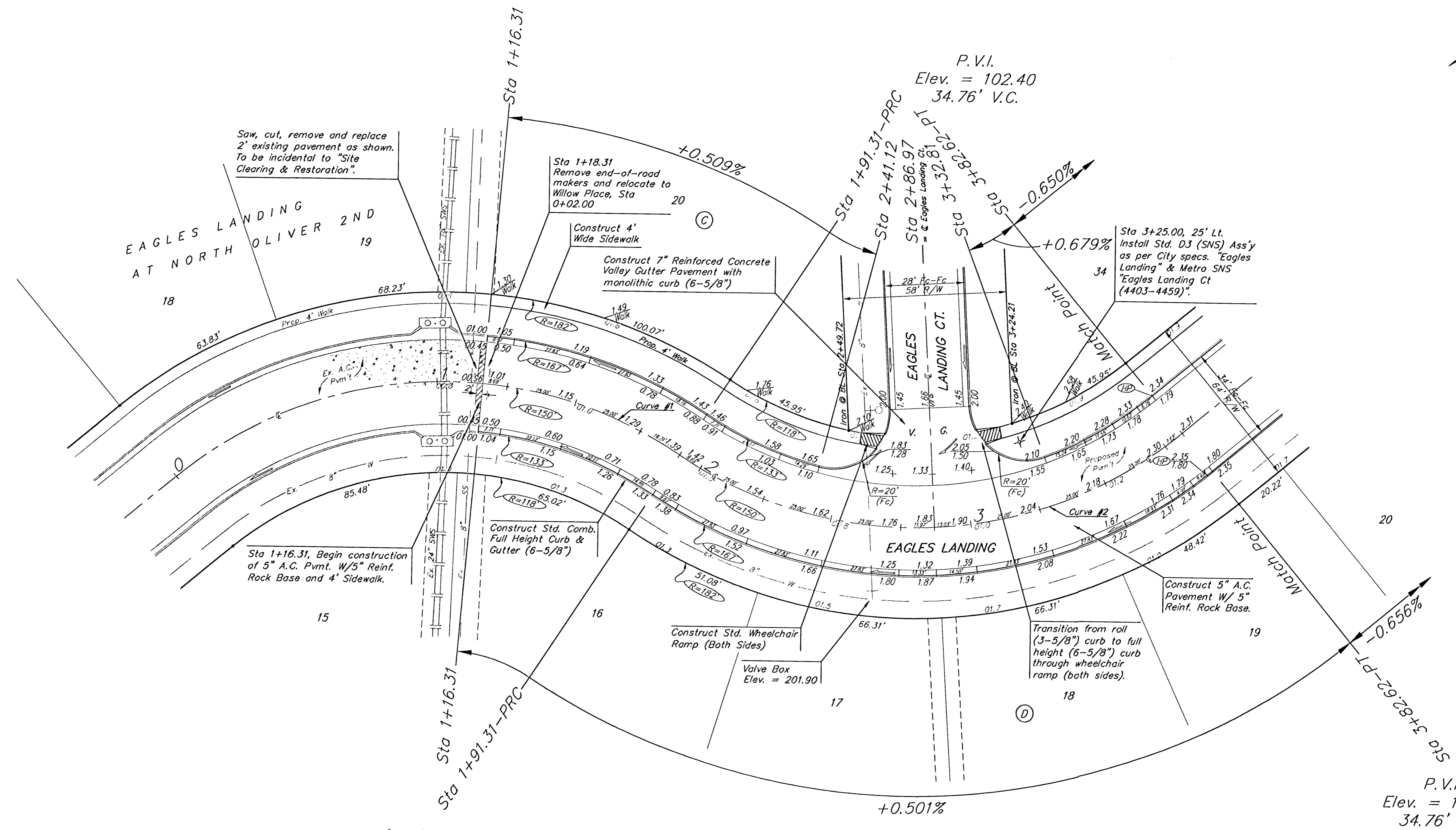


**BENCHMARKS:**  
 Oliver and 45th St. N. - Top of  
 Brass Plate on SW Corner of  
 R.C.B.C. East of Intersection.  
 ELEV. = 1398.88 NGVD  
 (211.48 City Datum)

60d Nail in H.L.P., 33' S. of the  
 NW Corner of Gov't. Lot 1 in the  
 NE1/4 of Sec. 26, TWP. 26-S,  
 R-1-E of the 6th P.M. Elev. =  
 1377.19 NGVD  
 (189.79 City Datum)



Scale: 1" = 20'  
 • = Iron



P.V.I.  
 Elev. = 102.40  
 34.76' V.C.

Curve #1  
 Curve Data Based on Centerline  
 Rad. = 150' Delta = 73°04'32" Tangent = 111.15'  
 Arc = 191.31' L.C. = 178.61' Def/Ft. = 11.45924 Min.

Station	Arc	FACE CHORD LENGTHS		Defl.	T. Defl.
		8' Lt.	8' Rt.		
0+00.00	-	-	-	0°00'00"	0°00'00"
1+16.31	116.31'	132.32'	94.52'	22°12'49"	22°12'49"
1+25.00	8.69'	10.14'	7.24'	1°39'35"	23°52'24"
1+50.00	25.00'	29.13'	20.81'	4°46'29"	28°39'53"
1+75.00	25.00'	29.13'	20.81'	4°46'29"	33°25'22"
1+91.31	16.31'	19.02'	13.59'	3°06'54"	36°32'16"

Curve #2  
 Curve Data Based on Centerline  
 Rad. = 150' Delta = 73°04'32" Tangent = 111.15'  
 Arc = 191.31' L.C. = 178.61' Def/Ft. = 11.45924 Min.

Station	Arc	FACE CHORD LENGTHS		Defl.	T. Defl.
		8' Lt.	8' Rt.		
1+91.31	-	-	-	0°00'00"	0°00'00"
2+00.00	8.69'	7.24'	10.14'	1°39'35"	1°39'35"
2+25.00	25.00'	20.81'	29.13'	4°46'29"	6°26'03"
2+41.12	16.12'	13.43'	18.80'	3°04'43"	9°30'47"
2+50.00	8.88'	7.40'	10.36'	1°41'45"	11°12'32"
2+75.00	25.00'	20.81'	29.13'	4°46'29"	15°59'01"
2+86.97	11.97'	9.97'	13.96'	2°17'10"	18°16'11"
3+00.00	13.03'	10.85'	15.20'	2°29'19"	20°45'30"
3+25.00	25.00'	20.81'	29.13'	4°46'29"	25°31'59"
3+32.81	7.81'	6.51'	9.11'	1°29'30"	27°01'29"
3+50.00	17.19'	14.32'	20.04'	3°16'59"	30°18'28"
3+75.00	25.00'	20.81'	29.13'	4°46'29"	35°04'57"
3+82.62	7.62'	6.35'	8.89'	1°27'19"	36°32'16"

EAGLES LANDING AT NORTH OLIVER 2ND ADDITION - PH. II  
**EAGLES LANDING**  
 STA 1+18.31 TO STA 3+82.62

**BAUGHMAN COMPANY P.A.**  
 ENGINEERING, SURVEYING, & PLANNING  
 316-282-7271 • 315 ELLIS • WCHITA, KANSAS 67211

PROJECT NUMBER  
**472-83485**

DESIGN: NBW    DRAWN: TMS    APPROVED: [Signature]    DATE: 03/03    SCALE: Noted

SHEET  
**6**  
 OF  
**40**