

**BENCHMARKS:**  
 Oliver and 45th St. N. - Top of Brass Plate on SW Corner of R.C.B.C. East of Intersection. ELEV. = 1398.88 NGVD (211.48 City Datum)

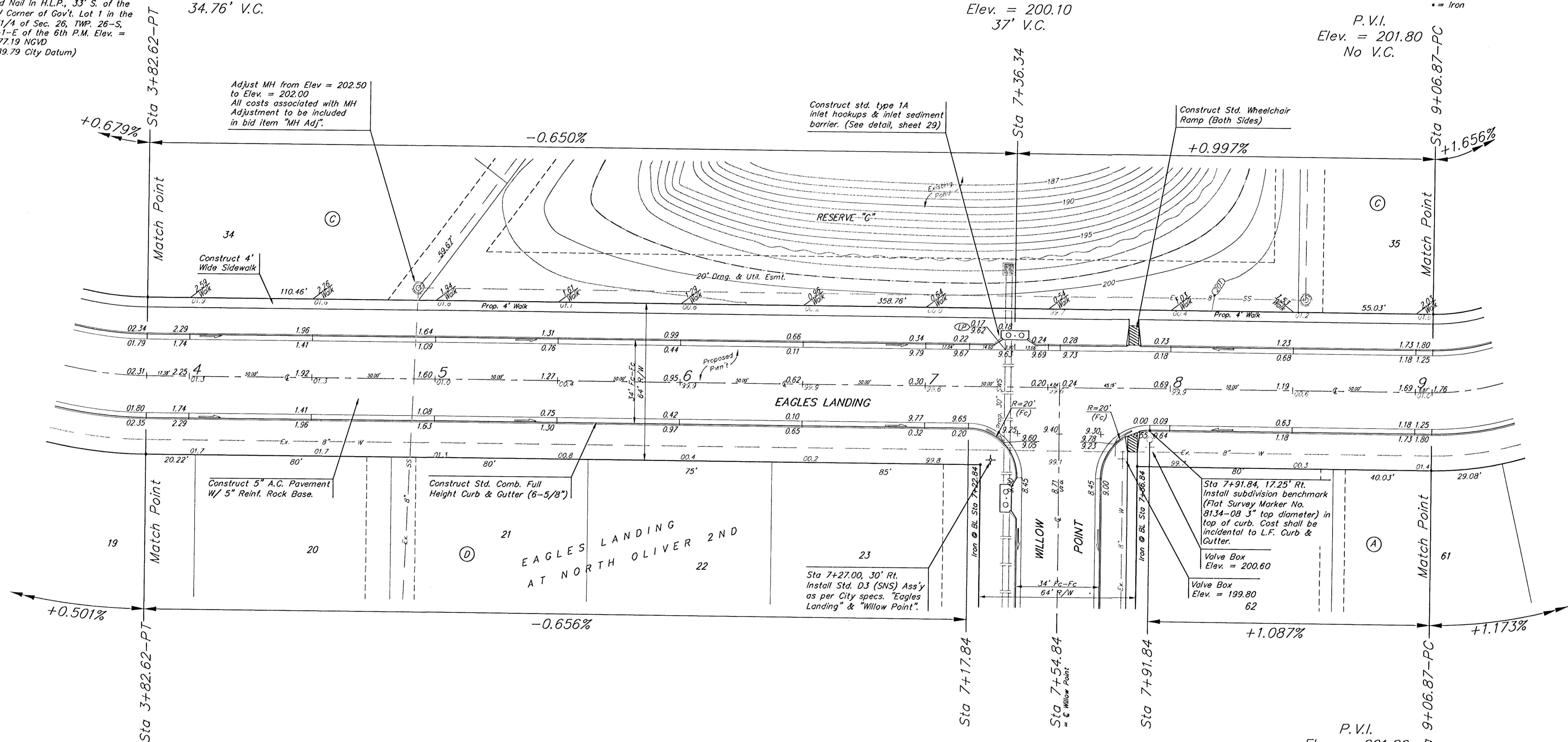
60d Nail In H.L.P., 33' S. of the NW Corner of Gov't. Lot 1 in the NE1/4 of Sec. 26, TWP. 26-S, R-1-E of the 6th P.M. Elev. = 1377.19 NGVD (189.79 City Datum)

P.V.I.  
 Elev. = 102.40  
 34.76' V.C.

P.V.I.  
 Elev. = 200.10  
 37' V.C.

P.V.I.  
 Elev. = 201.80  
 No V.C.

Scale: 1" = 20'  
 • = Iron



P.V.I.  
 Elev. = 102.40  
 34.76' V.C.

P.V.I.  
 Elev. = 201.80  
 No V.C.

Subdivision Bench Marks		
Street & Station	Location Description	Elevation
Eagles Landing 7+91.84, 17.25' Rt.	Adjacent to Fire Hydrant at S. End of S. Curb Return of Eagles Landing & Willow Point	
Eagles Landing Ct. 0+42.24, 14.25' Lt.	Adjacent to Fire Hydrant at S. End of N.E. Curb Return of Eagles Landing & Eagles Landing Ct.	
Eagles Landing Ct. 3+76.56, 14.25' Lt.	Adjacent to Fire Hydrant between Lots 22-23, Block C.	
Willow Point Ct. 0+37.14, 14.25' Lt.	Adjacent to Fire Hydrant at N. End of W. Curb Return of Willow Point and Willow Point Ct.	

EAGLES LANDING AT NORTH OLIVER 2ND ADDITION - PH. II  
**EAGLES LANDING**  
 STA 3+82.82 TO STA 3+82.82

**BAUGHMAN COMPANY P.A.**  
 ENGINEERING, SURVEYING, & PLANNING  
 316-262-7271 • 315 ELLIS • WICHITA, KANSAS 67211

PROJECT NUMBER  
**472-83485**

DESIGN: N8W    DRAWN: TMS    APPROVED: [Signature]    DATE: 03/03    SCALE: Noted    SHEET: 7 OF 40