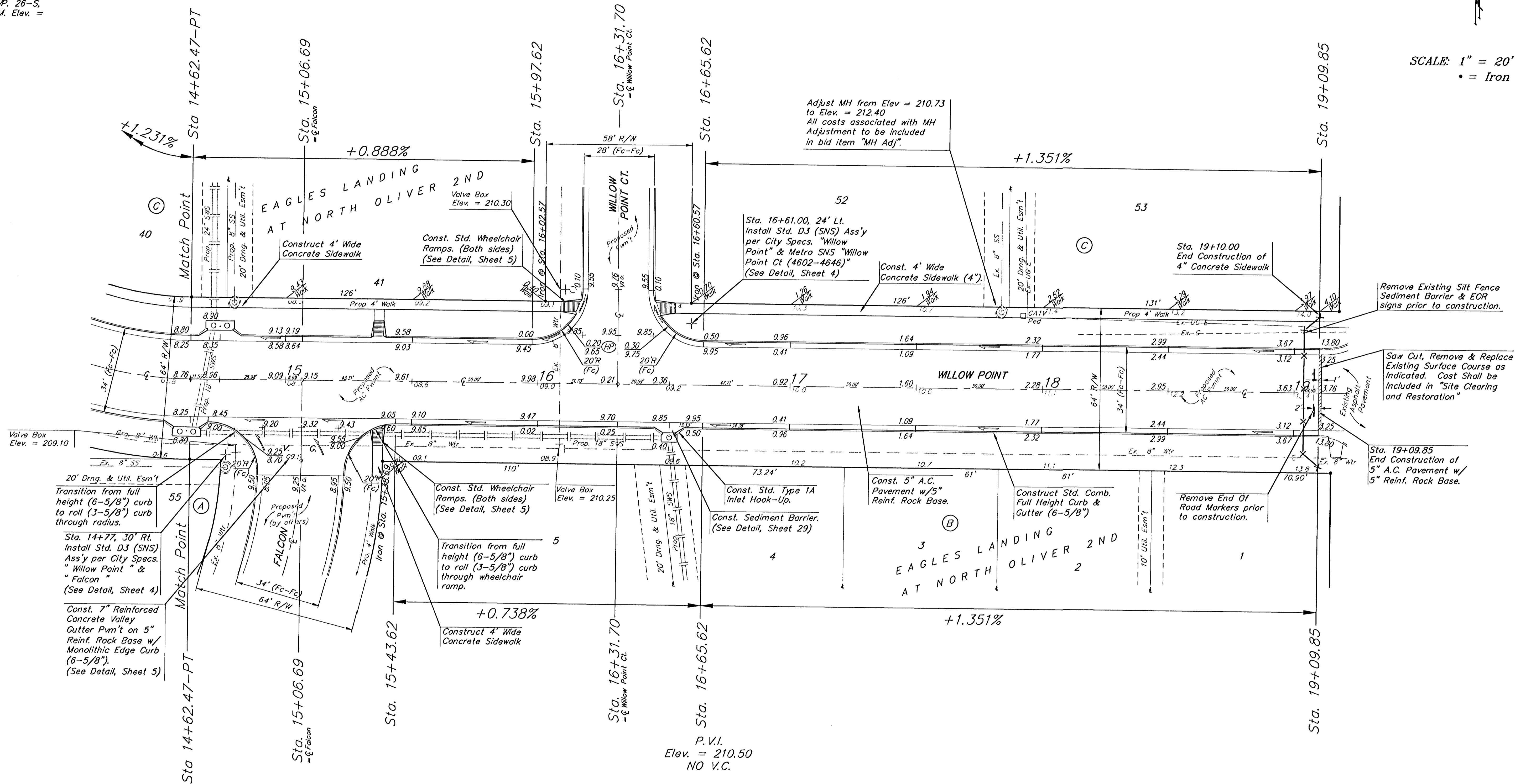


BENCHMARKS:
 Oliver and 45th St. N. - Top of Brass Plate on SW Corner of R.C.B.C. East of Intersection. ELEV. = 1398.88 NGVD (211.48 City Datum)

60d Nail In H.L.P., 33' S. of the NW Corner of Gov't. Lot 1 in the NE 1/4 of Sec. 26, TWP. 26-S, R-1-E of the 6th P.M. Elev. = 1377.19 NGVD (189.79 City Datum)

P.V.I.
 Elev. = 208.80
 No V.C.

SCALE: 1" = 20'
 • = Iron



P.V.I.
 Elev. = 210.50
 NO V.C.

Contractor to Coordinate Construction of Intersection of Willow Point and Falcon with Adjacent Paving Project.

EAGLES LANDING AT NORTH OLIVER 2ND ADDITION - PHASE II
WILLOW POINT
 STA. 0+30.85 TO STA. 4+03.18

BAUGHMAN COMPANY P.A.
 ENGINEERING, SURVEYING, & PLANNING
 316-262-7271 • 315 ELLIS • WICHITA, KANSAS 67211

PROJECT NUMBER: _____ SHEET: **10** OF **40**

DESIGN: NGW	DRAWN: MKT/CNX	APPROVED: _____	DATE: 02/03	SCALE: NOTED
-------------	----------------	-----------------	-------------	--------------