

**BENCHMARKS:**  
 Oliver and 45th St. N. - Top of Brass Plate on SW Corner of R.C.B.C. East of Intersection. ELEV. = 1398.88 NGVD (211.48 City Datum)

60d Nail in H.L.P., 33' S. of the NW Corner of Gov't. Lot 1 in the NE1/4 of Sec. 26, TWP. 26-S, R-1-E of the 6th P.M. Elev. = 1377.19 NGVD (189.79 City Datum)

EAGLES LANDING AT NORTH OLIVER 2ND

Sta. 0+00, Begin Line 2  
 Begin Construct of 30" SWS W/30" R.C. Headwall. Install 29 S.Y. of Heavy Stone Riprap.

RESERVE "C"  
 Proposed Pond

Contractor to fill, compact, and grade existing V-ditch to match adjacent existing grade. Cost to be included in "Site Clearing & Restoration."

Caution!  
 Ex. 8" SS  
 Line Crossing

Const. Straw Bale Sediment Barrier  
 See Detail, Sheet 29

LINE 2

LINE 2A

Sta. 1+42.0 Line 2 = Sta. 0+00, Line 2A  
 Const. Std. Shallow Manhole (5' Dia.) w/ Grated Lid (Neenah R-2501 or Equivalent)  
 Top Elev. = 207.10

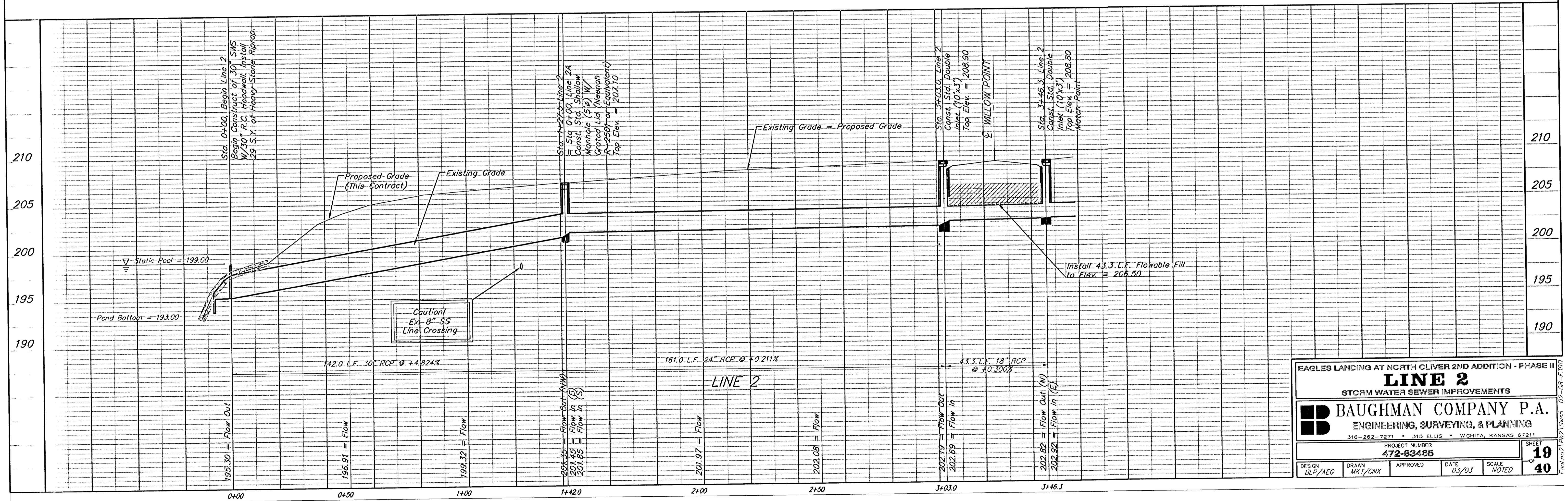
Sta. 3+03.0 to Sta. 3+46.3  
 Install 43.3 L.F. Flowable Fill Per City Specifications.

Sta. 3+46.3, Line 2  
 Const. Std. Double Inlet (10'x3')  
 Top Elev. = 208.80  
 Match Point

Valve Box  
 Elev. = 208.75

Scale: 1" = 20' Horizontal  
 1" = 5' Vertical  
 • = Iron

EAGLES LANDING AT NORTH OLIVER 2ND



EAGLES LANDING AT NORTH OLIVER 2ND ADDITION - PHASE II  
**LINE 2**  
 STORM WATER SEWER IMPROVEMENTS

**BAUGHMAN COMPANY P.A.**  
 ENGINEERING, SURVEYING, & PLANNING  
 315-262-7271 • 315 ELLIS • WICHITA, KANSAS 67211

PROJECT NUMBER  
**472-83485**

DESIGN: BLP/AEG    DRAWN: MKT/CNX    APPROVED: \_\_\_\_\_    DATE: 03/03    SCALE: NOTED

SHEET **19** OF **40**