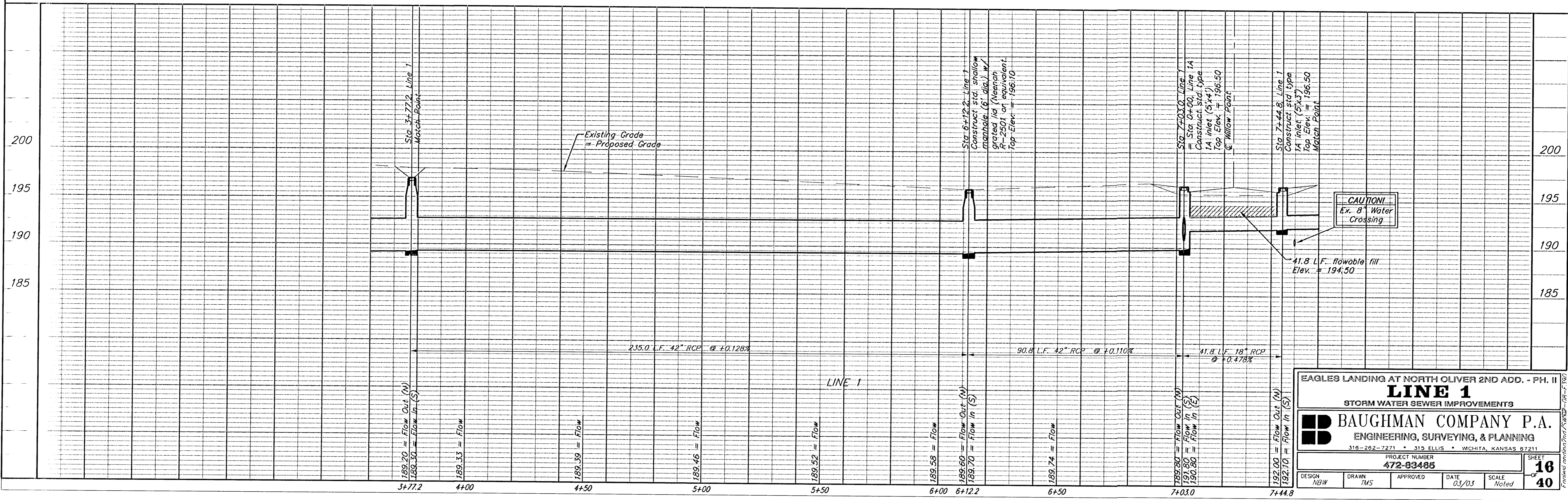
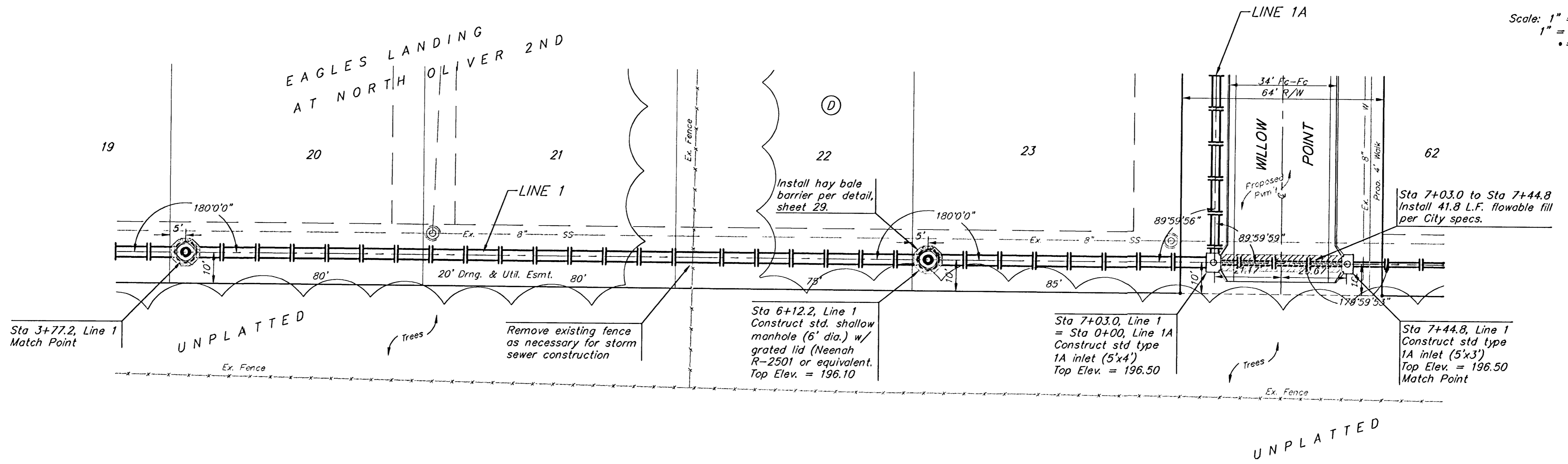


**BENCHMARKS:**  
 Oliver and 45th St. N. - Top of Brass Plate on SW Corner of R.C.B.C. East of Intersection. ELEV. = 1398.88 NGVD (211.48 City Datum)

60d Nail in H.L.P., 33' S. of the NW Corner of Gov't. Lot 1 in the NE1/4 of Sec. 26, TWP. 26-S, R-1-E of the 6th P.M. Elev. = 1377.19 NGVD (189.79 City Datum)

Scale: 1" = 20' Horizontal  
 1" = 5' Vertical  
 • = Iron



EAGLES LANDING AT NORTH OLIVER 2ND ADD. - PH. II  
**LINE 1**  
 STORM WATER SEWER IMPROVEMENTS

**BAUGHMAN COMPANY P.A.**  
 ENGINEERING, SURVEYING, & PLANNING  
 316-262-7271 • 315 ELLIS • WICHITA, KANSAS 67211

PROJECT NUMBER: 472-83485  
 SHEET 16 OF 40

DESIGN: MBW	DRAWN: TMS	APPROVED:	DATE: 03/03	SCALE: Noted
-------------	------------	-----------	-------------	--------------