

**BENCHMARKS:**  
 Oliver and 45th St. N. - Top of Brass Plate on SW Corner of R.C.B.C. East of Intersection. ELEV. = 1398.88 NGVD (211.48 City Datum)

60d Nail In H.L.P., 33' S. of the NW Corner of Gov't. Lot 1 in the NE 1/4 of Sec. 26, TWP. 26-S, R-1-E of the 6th P.M. Elev. = 1377.18 NGVD "B" (189.79 City Datum)

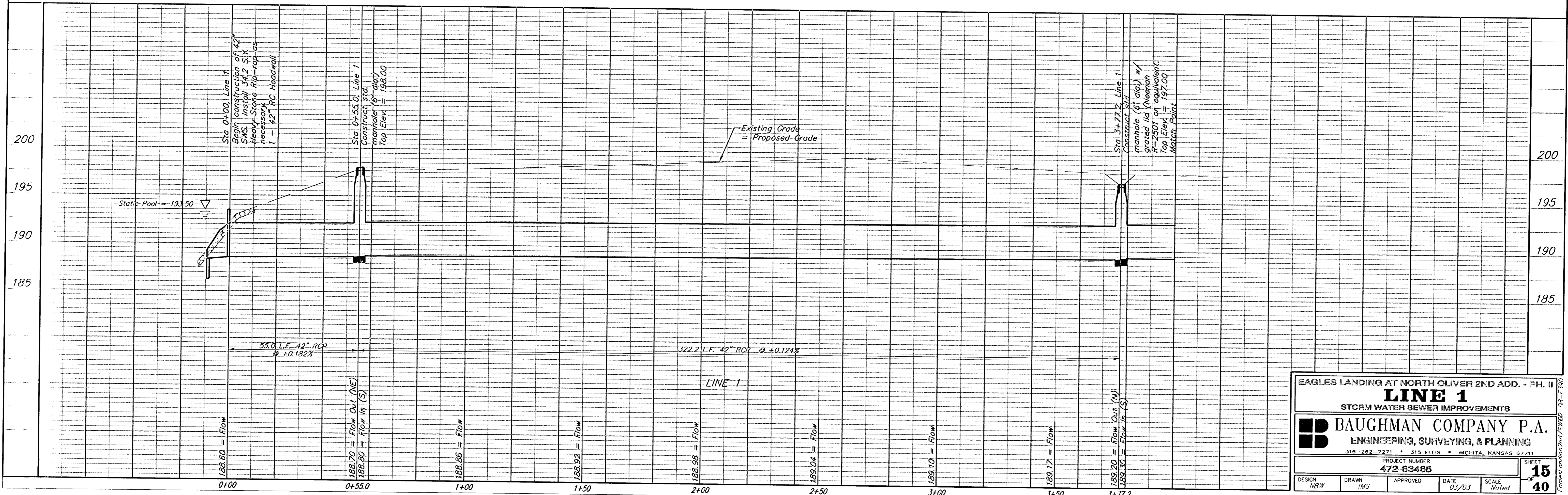
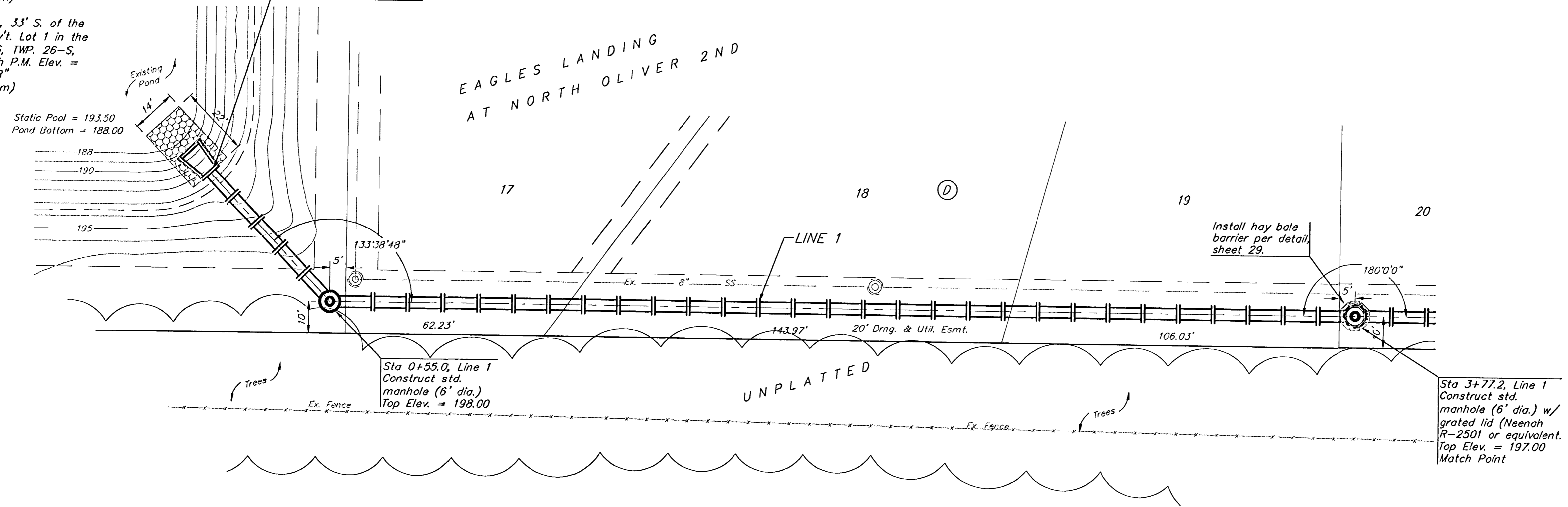
Static Pool = 193.50  
 Pond Bottom = 188.00

Sta 0+00, Line 1  
 Begin construction of 42" SWS. Install 34.2 S.Y. Heavy Stone Rip-rap as necessary.  
 1 - 42" RC Headwall

Sta 0+55.0, Line 1  
 Construct std. manhole (6' dia.) Top Elev. = 198.00

Sta 3+77.2, Line 1  
 Construct std. manhole (6' dia.) w/ grated lid (Neenah R-2501 or equivalent) Top Elev. = 197.00  
 Match Point

Scale: 1" = 20' Horizontal  
 1" = 5' Vertical  
 • = Iron



EAGLES LANDING AT NORTH OLIVER 2ND ADD. - PH. II  
**LINE 1**  
 STORM WATER SEWER IMPROVEMENTS

**BAUGHMAN COMPANY P.A.**  
 ENGINEERING, SURVEYING, & PLANNING  
 316-262-7271 • 315 ELLIS • WICHITA, KANSAS 67211

PROJECT NUMBER  
**472-83485**

DESIGN NBW DRAW TMS APPROVED DATE 03/03 SCALE Noted

SHEET  
**15**  
 OF  
**40**