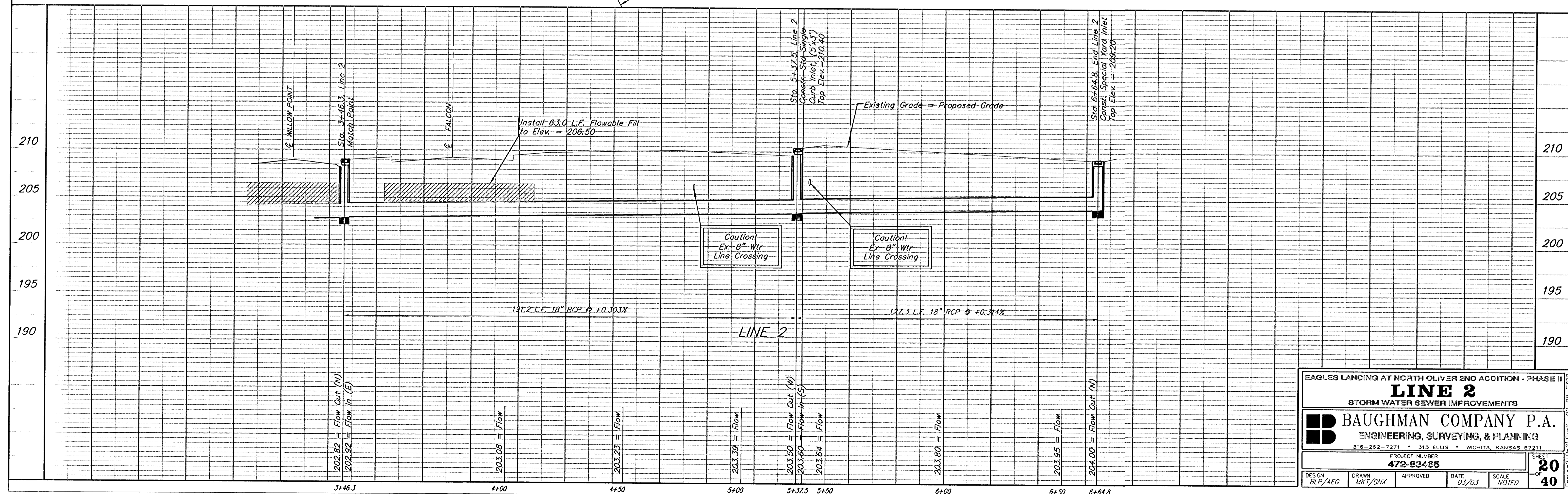
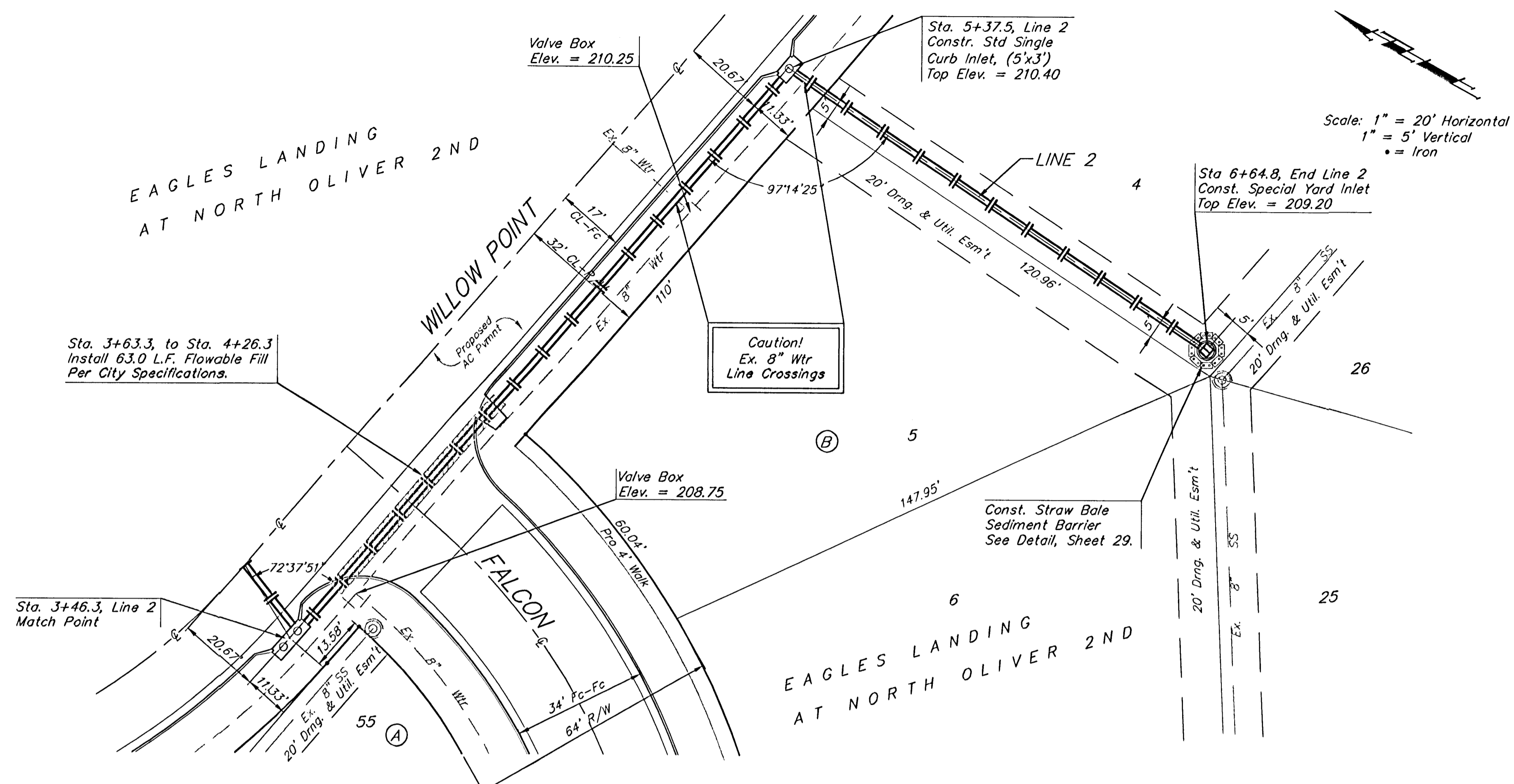


BENCHMARKS:
 Oliver and 45th St. N. - Top of Brass Plate on SW Corner of R.C.B.C. East of Intersection.
 ELEV. = 1398.88 NGVD
 (211.48 City Datum)

60d Nail in H.L.P., 33' S. of the NW Corner of Gov't. Lot 1 in the NE1/4 of Sec. 26, TWP. 26-S, R-1-E of the 6th P.M. Elev. = 1377.19 NGVD
 (189.79 City Datum)



EAGLES LANDING AT NORTH OLIVER 2ND ADDITION - PHASE II
LINE 2
 STORM WATER SEWER IMPROVEMENTS

BAUGHMAN COMPANY P.A.
 ENGINEERING, SURVEYING, & PLANNING
 315-262-7271 • 315 ELLIS • WICHITA, KANSAS 67211

PROJECT NUMBER
472-83485

DESIGN BLP/AEG	DRAWN MK1/GNX	APPROVED	DATE 03/03	SCALE NOTED
-------------------	------------------	----------	---------------	----------------

SHEET
20
 OF
40