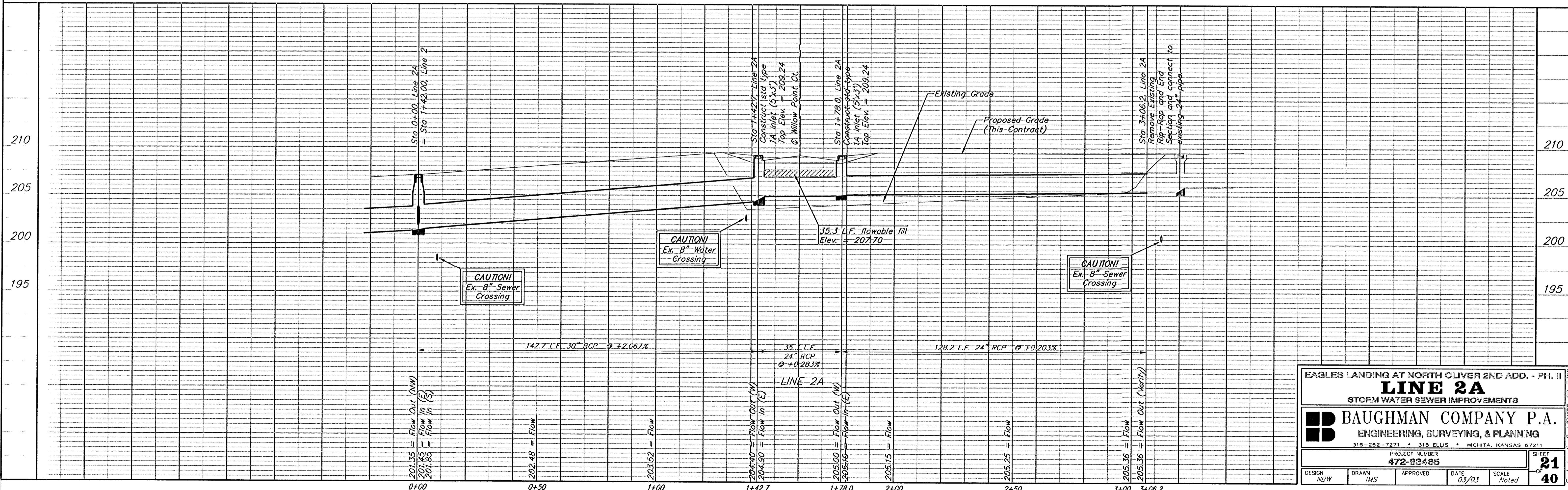
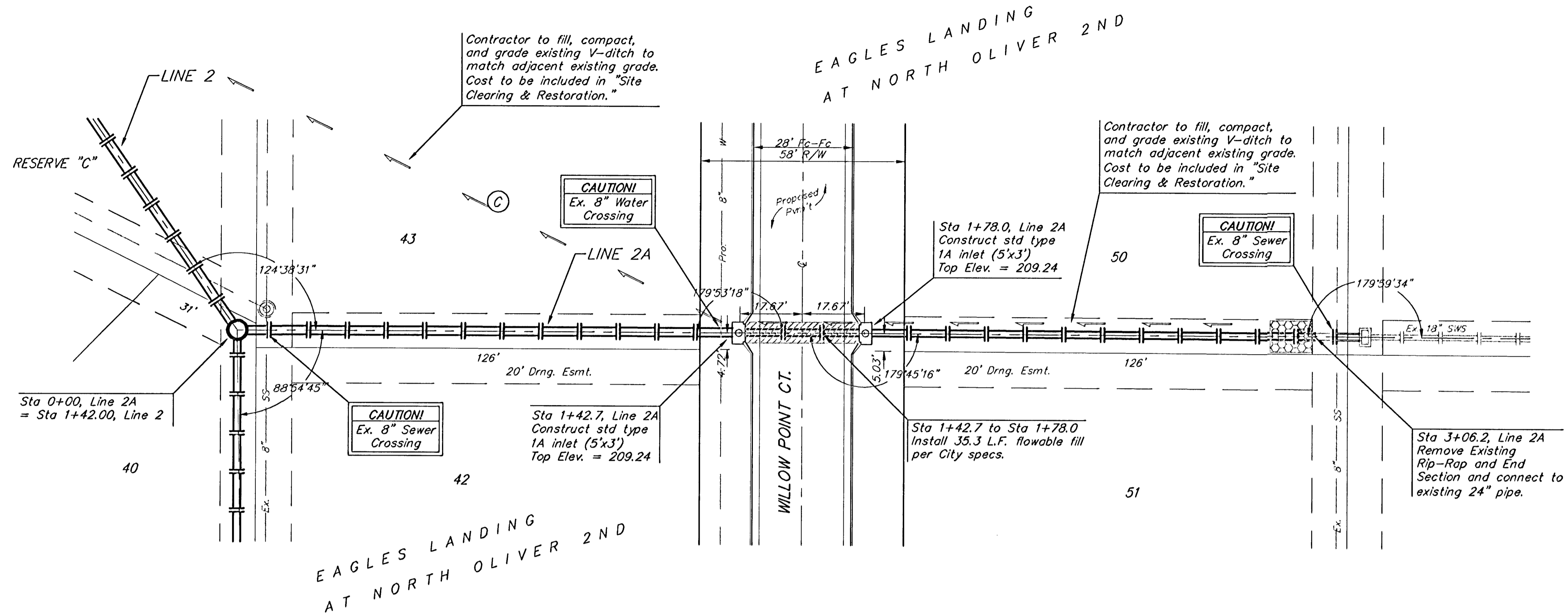


**BENCHMARKS:**  
 Oliver and 45th St. N. - Top of  
 Brass Plate on SW Corner of  
 R.C.B.C. East of Intersection.  
 ELEV. = 1398.88 NGVD  
 (211.48 City Datum)

60d Nail in H.L.P., 33' S. of the  
 NW Corner of Gov't. Lot 1 in the  
 NE1/4 of Sec. 26, TWP. 26-S,  
 R-1-E of the 6th P.M. Elev. =  
 1377.19 NGVD  
 (189.79 City Datum)



EAGLES LANDING AT NORTH OLIVER 2ND ADD. - PH. II

**LINE 2A**

STORM WATER SEWER IMPROVEMENTS

**BAUGHMAN COMPANY P.A.**

ENGINEERING, SURVEYING, & PLANNING

316-262-7271 • 315 ELLIS • WICHITA, KANSAS 67211

PROJECT NUMBER  
**472-83485**

DESIGN NBW DRAWN TMS APPROVED DATE 03/03 SCALE Noted

SHEET **21** OF **40**