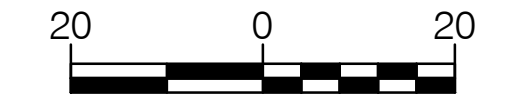


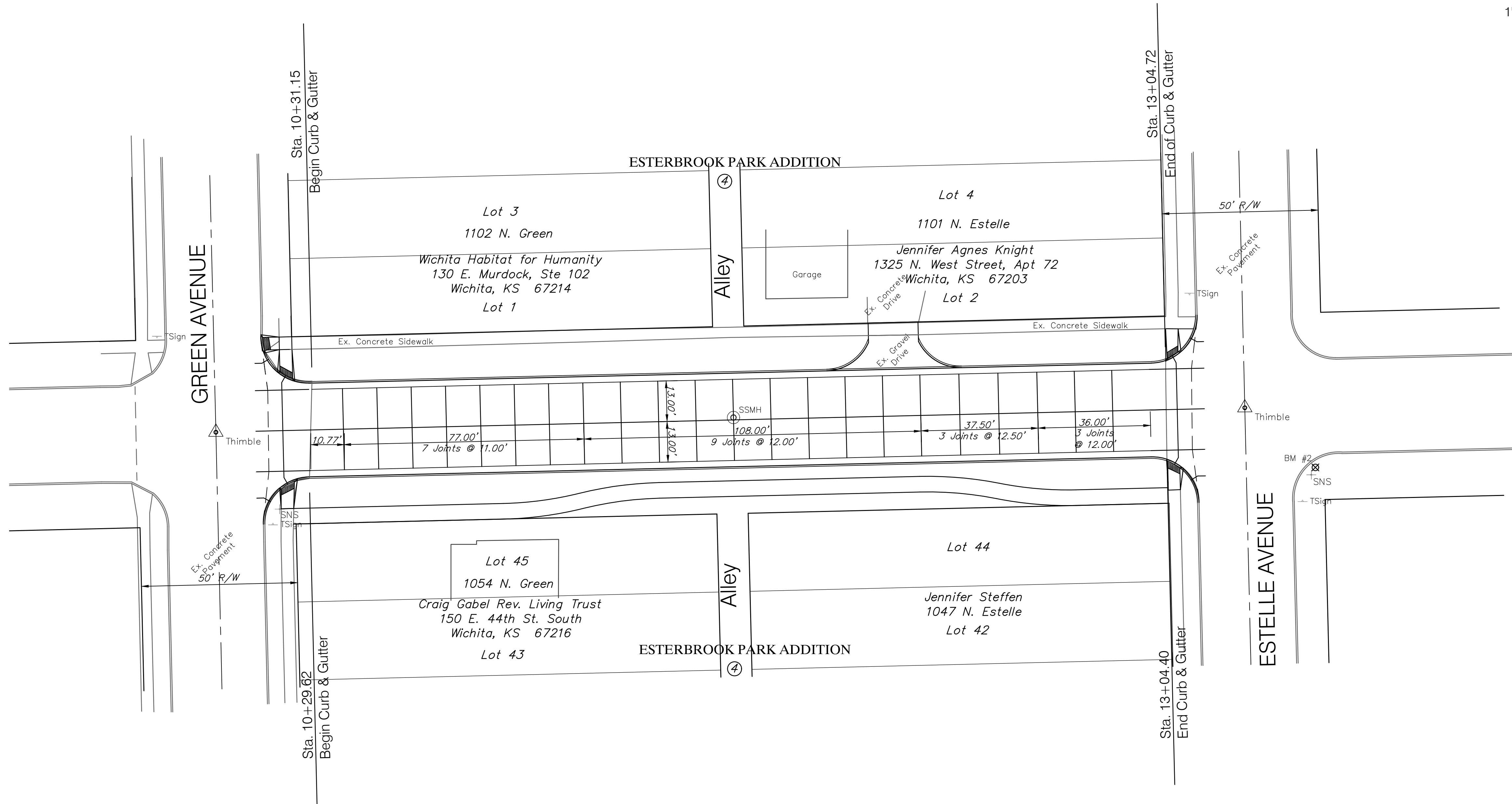
BENCHMARKS:

BM #1 - Chiseled "□" on the Top of Curb on the North Side 10th Street North 90' West of the Centerline of Green.
Elev. = 1311.66 (NAVD 88)

BM #2 - 60d Nail in the West face of the Light Pole in the Southwest Corner of 10th Street North and Estelle.
Elev. = 1315.40 (NAVD 88)



SCALE:
1" = 20' Horizontal
1" = 5' Vertical



Drawing File: E:\Projects\10th Street Paving\10th Street Paving Base.dwg (Pw 01)
Project No. 1607-E507 CAPITAL IMPROVEMENT PROJECT
Design: TPV
Drawn: TPV
Approved: TPV
Scale: NOTED

10th STREET NORTH JOINT PLAN
Sta. 10+29.62 to Sta. 13+04.72

Baughman Company, P.A.
315 Ellis St. Wichita, KS 67211 P 316-262-7271 F 316-262-0149
ENGINEERING | SURVEYING | PLANNING | LANDSCAPE ARCHITECTURE