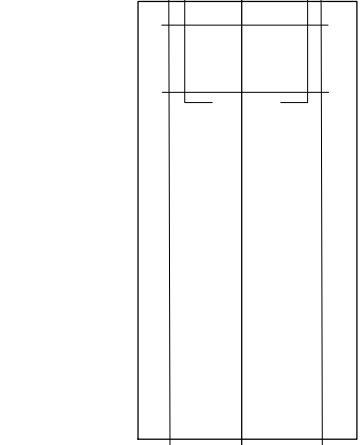
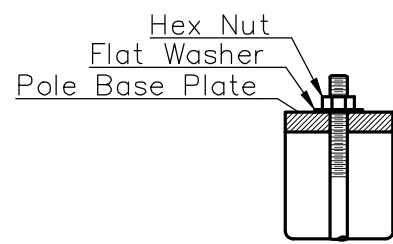


Bolt Circle 13.5" on Center
#6 Rebar 42" x 9 pcs.

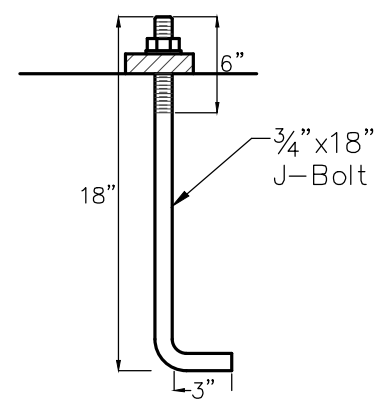
4 J-Bolts 3/4"x18"
5/8"x12' Ground Rod Bonded to the Signal Pole with # 6 bare copper wire.



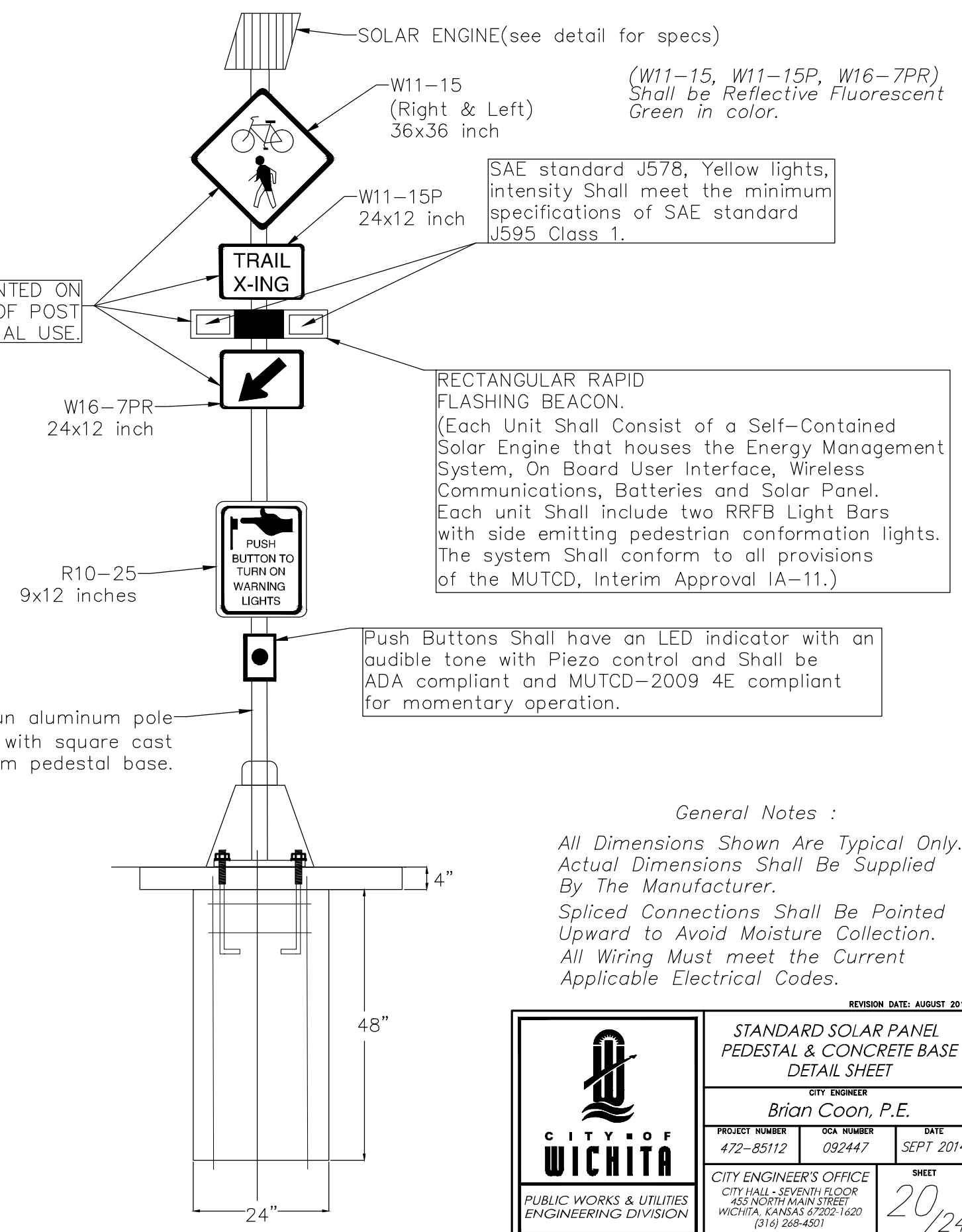
#6 Rebar 60" x 4 pcs.
#4 Rebar Cross bars weld or wire.



Use Keystone "No-Weld Number 1 Anti-Seize Compound" on all bolts & nuts.

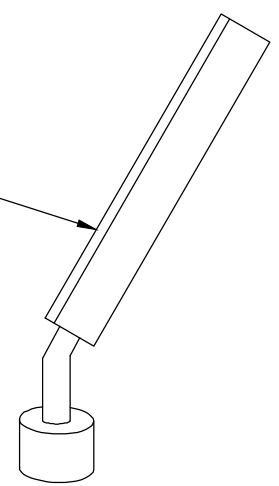



SHOULD BE MOUNTED ON BOTH SIDES OF POST FOR BI-DIRECTIONAL USE.



General Notes :
All Dimensions Shown Are Typical Only. Actual Dimensions Shall Be Supplied By The Manufacturer.
Spliced Connections Shall Be Pointed Upward to Avoid Moisture Collection.
All Wiring Must meet the Current Applicable Electrical Codes.

SOLAR PANEL & ENGINE :
(1) 10 watt solar panel no larger than the footprint of the housing with hinged top to access the user interface & batteries.
(2) 7Ah sealed valve regulated lead acid batteries with quick connectors to facilitate faster installation (non-proprietary & readily available from multiple suppliers)
Batteries Shall not need to be charged by a battery charger prior to installation.
Solar panel and system Shall be 12 volt DC.



 CITY OF WICHITA PUBLIC WORKS & UTILITIES ENGINEERING DIVISION			STANDARD SOLAR PANEL PEDESTAL & CONCRETE BASE DETAIL SHEET CITY ENGINEER Brian Coon, P.E.		
PROJECT NUMBER 472-85112	OCA NUMBER 092447	DATE SEPT 2014	SHEET 20 /24		
CITY ENGINEER'S OFFICE CITY HALL - SEVENTH FLOOR 455 NORTH MAIN STREET WICHITA, KANSAS 67202-1620 (316) 268-4501					

REVISION DATE: AUGUST 2014