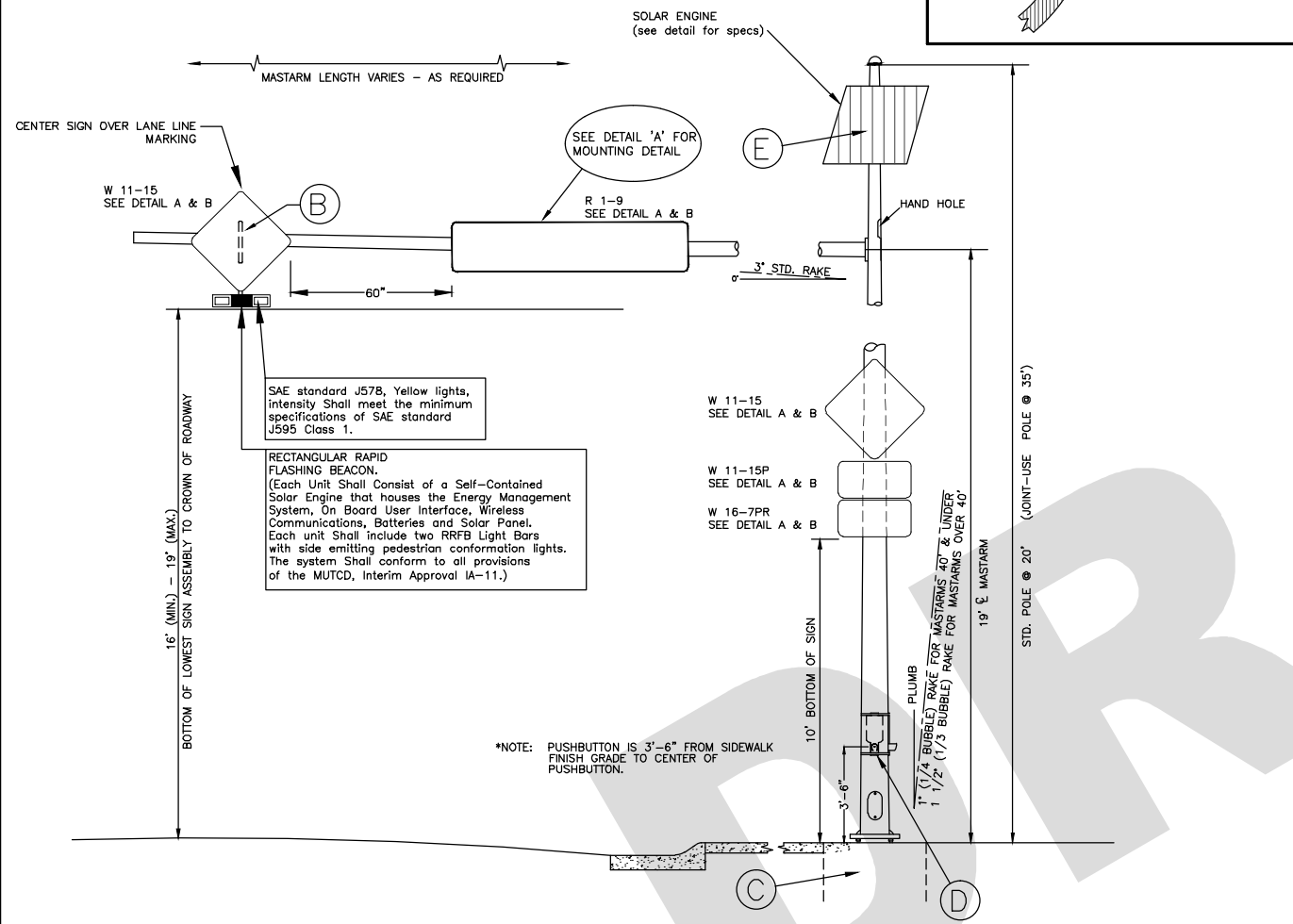
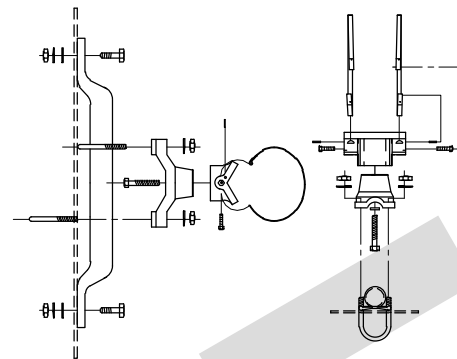


General Notes

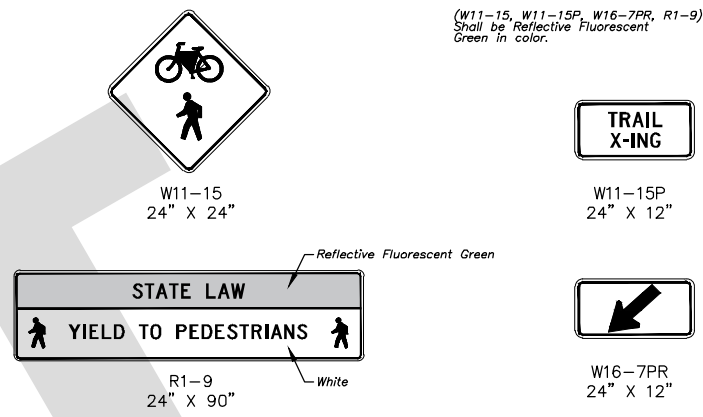
All Dimensions Shown Are Typical Only. Actual Dimensions Shall Be Supplied By The Manufacturer. Spliced Connections Shall Be Pointed Upward to Avoid Moisture Collection. All Wiring Must meet the Current Applicable Electrical Codes.



BANDED SIGN MOUNTING BRACKET DETAIL

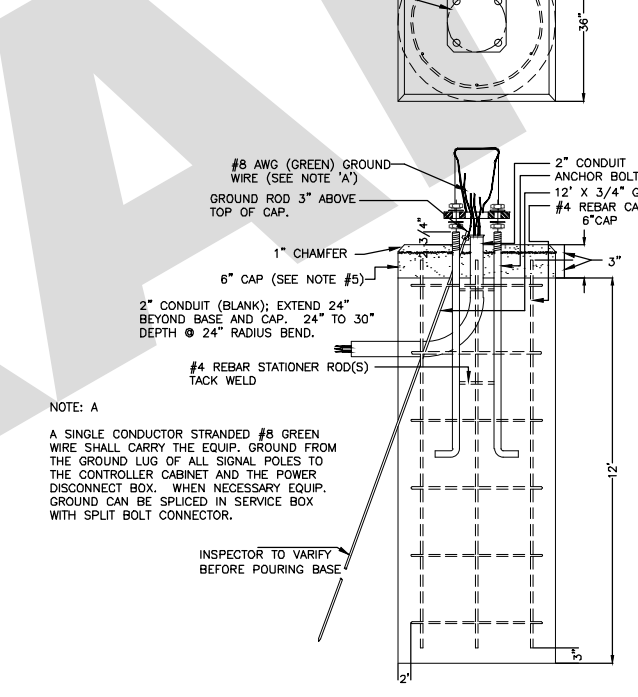


STANDARD SIGNING



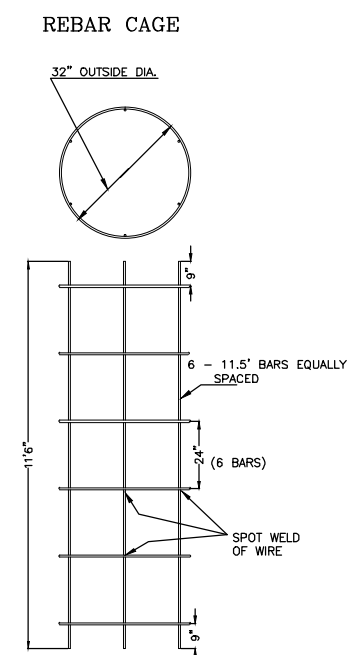
(W11-15, W11-15P, W16-7PR, R1-9) Shall be Reflective Fluorescent Green in color.

SIGNAL POLE FOOTING



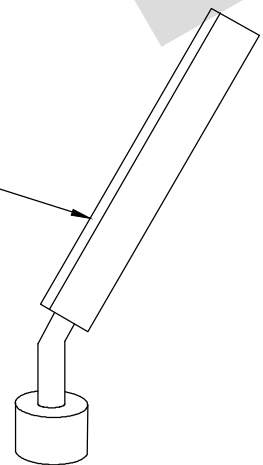
- NOTE:
1. THE ANCHOR BOLTS FOR THE SIGNAL POLE SHALL BE TACK WELDED TOGETHER IN A 16" OR 20" DIA. BOLT PATTERN (ON CENTERS AS SHOWN) TO MAINTAIN REQUIRED BOLT CONFIGURATION PATTERN AND TO AID IN VERTICAL POSITIONING WHILE CONCRETE BASE IS POURED.
 2. USE ANTI-SEIZE COMPOUND ON ALL THREADS.
 3. 12" x 3/4" GROUND ROD TO BE POSITIONED BEFORE POURING BASE.
 4. CLASS 'A' CONCRETE SHALL BE USED TO CONSTRUCT BASE.
 5. CONSTRUCT A 6" THICK x 36" SQUARE CONCRETE CAP AFTER POLE HAS BEEN ERECTED & PLUMBED. CHAMFER EDGE 1". MUST BE APPROVED BY ENG. BEFORE POURED.
 6. CONDUIT SHALL HAVE PLASTIC (OR METAL) BUSHING (ABOVE BASE) TO PREVENT CABLE CHAFING. CONDUIT SHALL BE BLANK TO ACCOMMODATE FUTURE SIGNAL UPGRADE.
 7. USE #6 BARE COPPER GROUND CONDUCTOR FROM CLAMP TO GROUND BOLT IN ACCESS HOLE.

SIGNAL POLE FOOTING

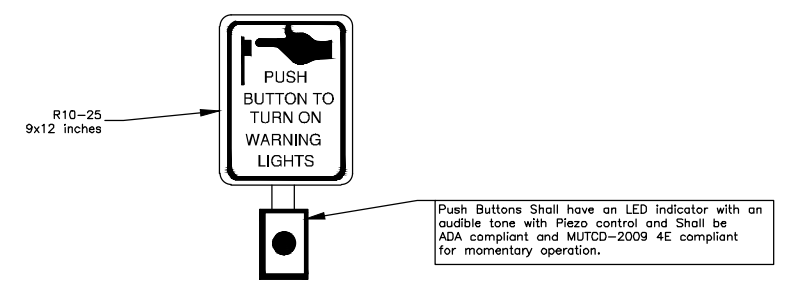


SOLAR ENGINE

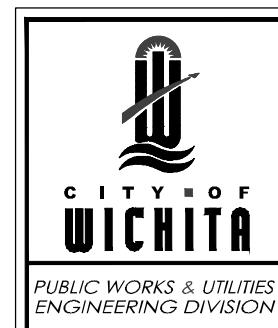
SOLAR PANEL & ENGINE :
 (1) 10 watt solar panel no larger than the footprint of the housing with hinged top to access the user interface & batteries.
 (2) 7Ah sealed valve regulated lead acid batteries with quick connectors to facilitate faster installation (non-proprietary & readily available from multiple suppliers)
 Batteries shall not need to be charged by a battery charger prior to installation.
 Solar panel and system shall be 12 volt DC.



RAPID FLASH BEACON PUSH BUTTON



ADD ALTERNATE #2



REVISED: XXX		
STEEL PEDESTRIAN SIGNAL POLE ASSEMBLY DETAILS		
TRAFFIC ENGINEER BRIAN A. COON, P.E.		
PROJECT NUMBER	OCA NUMBER	DATE
CITY ENGINEER'S OFFICE CITY HALL - SEVENTH FLOOR 455 NORTH MAIN STREET WICHITA, KANSAS 67202-1620 (316) 268-4501		SHEET